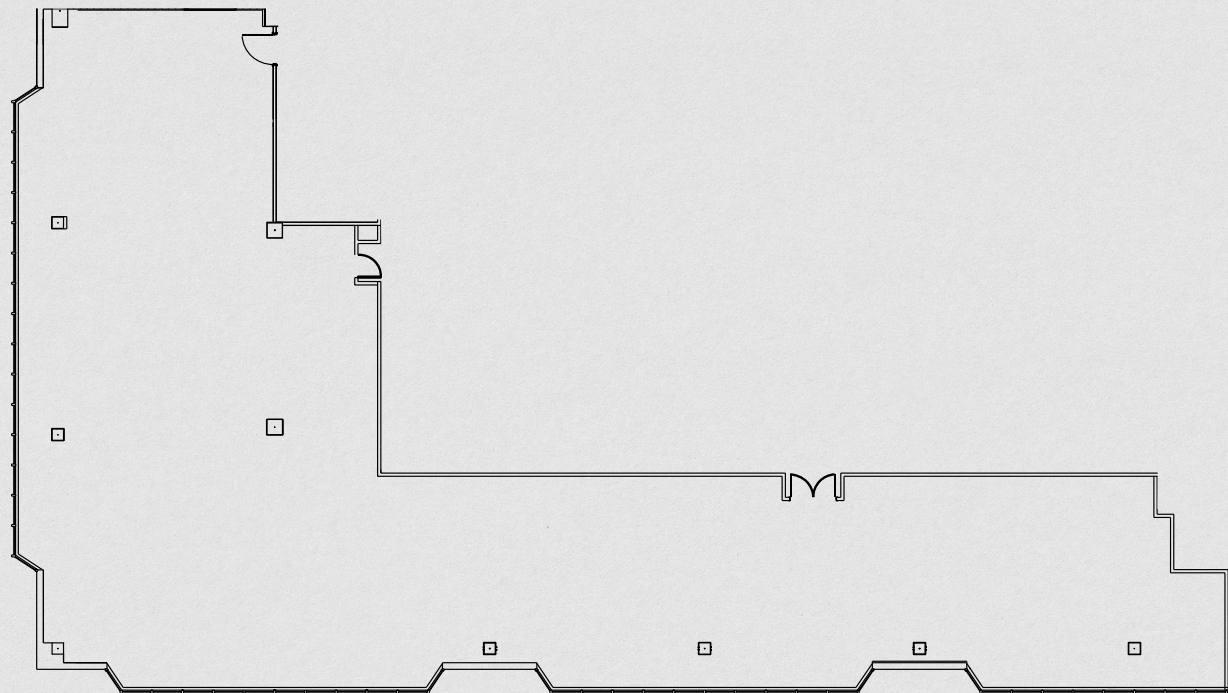


KEY PLAN

SUITE IS IN WHITE  
BOX CONDITION



## Contact

Tim Arnold, Director, Office Leasing | 704.295.0404 | [tarnold@trinity-partners.com](mailto:tarnold@trinity-partners.com)

Rhea Greene, Managing Partner, Office Leasing | 704.295.0460 | [rdg@trinity-partners.com](mailto:rdg@trinity-partners.com)