



ASSET
MANAGEMENT
SERVICES

AVAILABLE FOR LEASE IN MURRAY
480 E WINCHESTER ST (6400 South)
\$24.00 RSF FS



PROPERTY FEATURES

- Easy Access to I-15 & I-215 Freeways
- Great Mid-Valley Location
- Excellent Access & Visibility
- Located on UTA Bus Route
- Close to Fashion Place Mall & Numerous Restaurants
- On Site Management

SPACE AVAILABLE FOR LEASE

- Suite 110 - 1,171 RSF
Former Forensics Office/Lab
- Suite 230 - 3,238 RSF Available July 1, 2026
Open Floor Plan

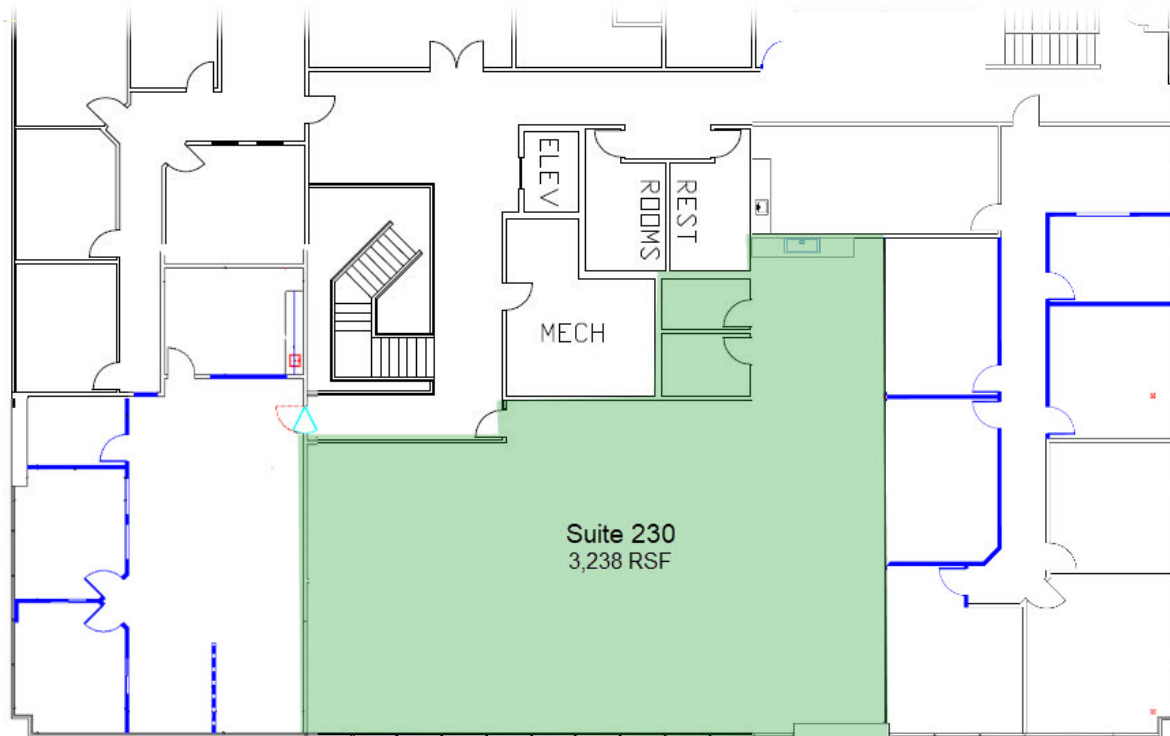
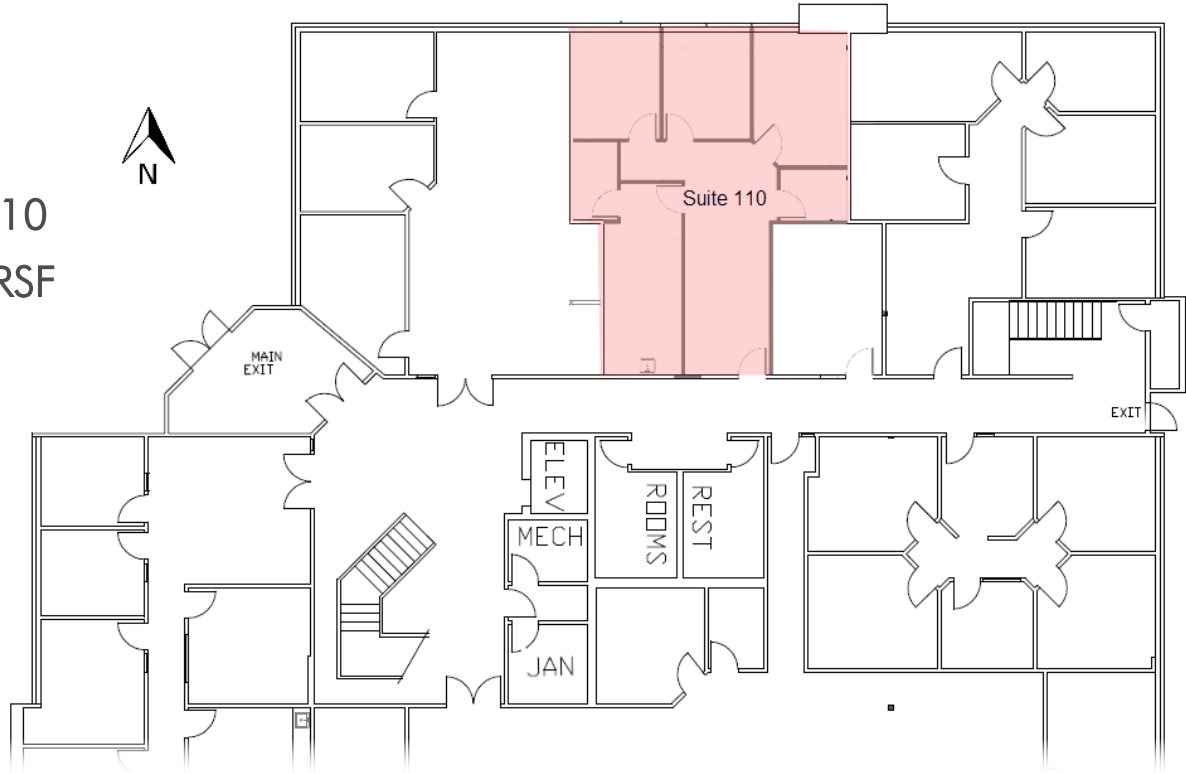
488 E WINCHESTER STREET, STE 325
MURRAY, UT 84107 801.288.8811
ams-utah.com

SHAUNA LYNN, CCIM
slynn@ams-utah.com

COMMERCE PARK II



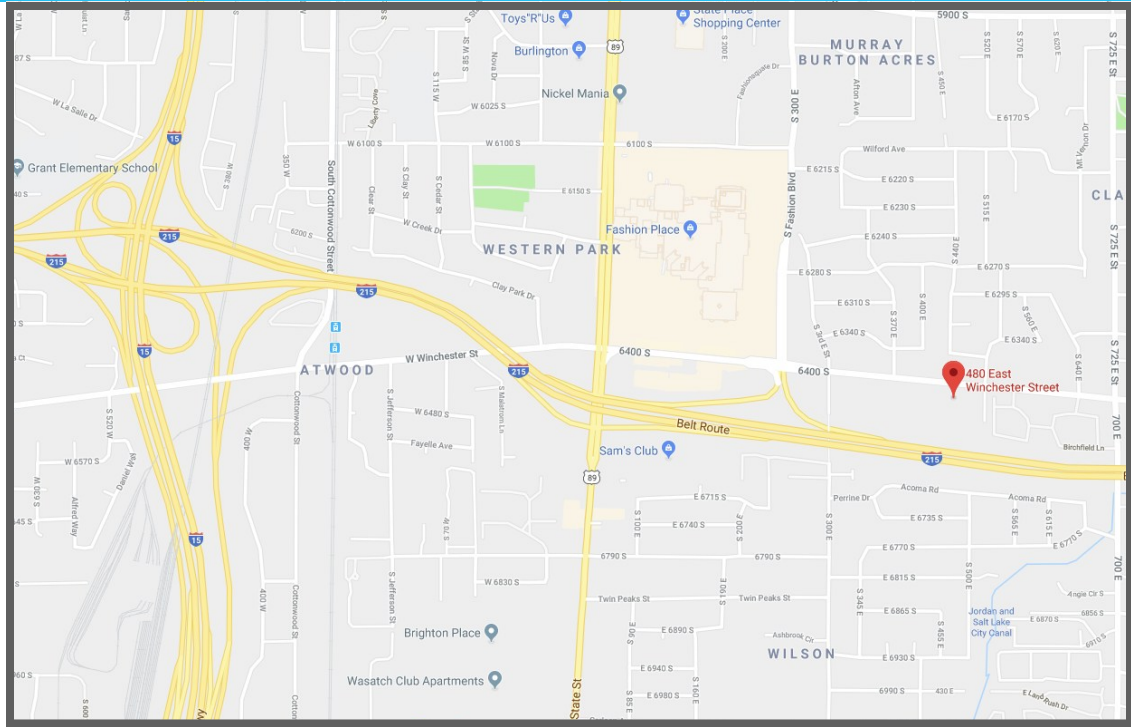
Suite 110
1,171 RSF



Suite 230
3,238
Available 7/1/26

SHAUNA LYNN, CCIM
slynn@ams-utah.com

801.288.8811



SHAUNA LYNN, CCIM
slynn@ams-utah.com

801.288.8811