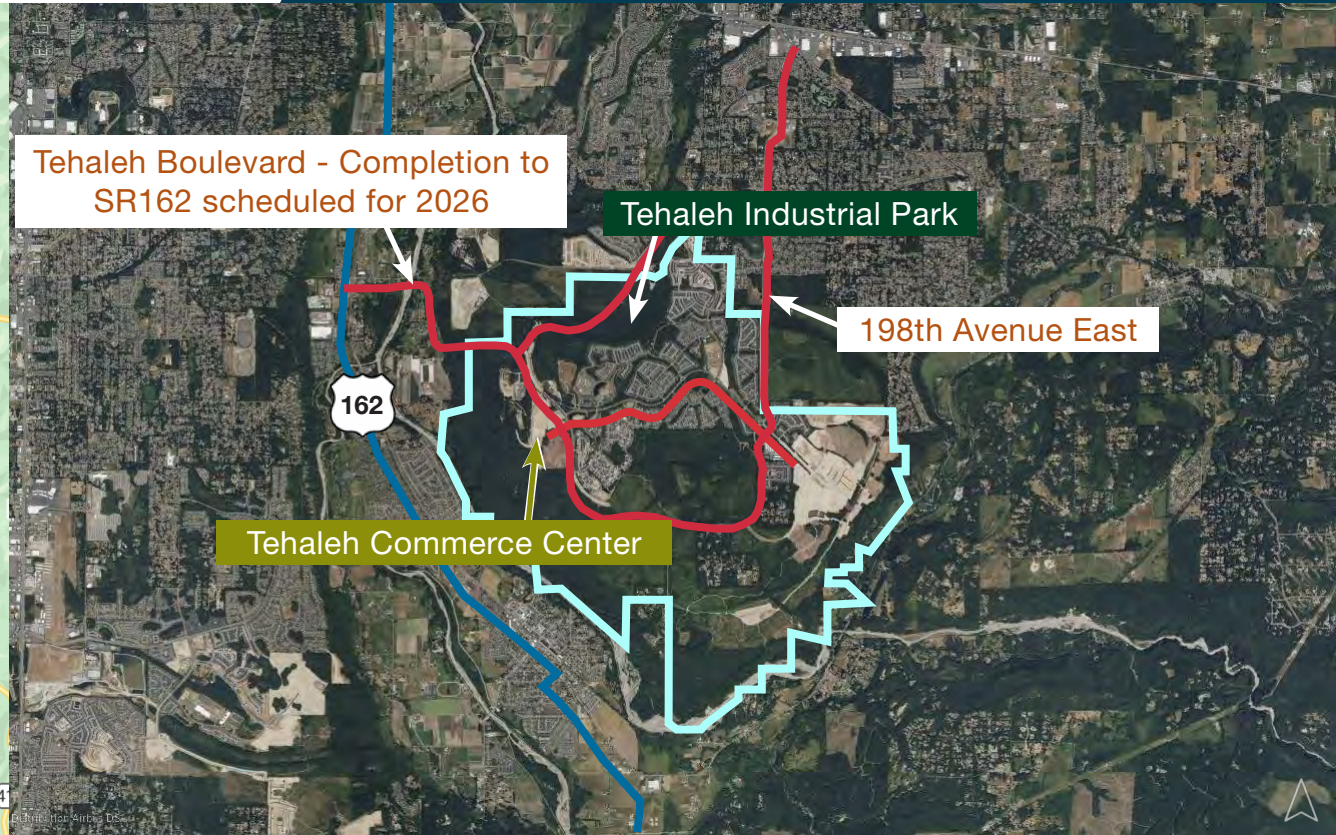


Tehaleh Commerce Center Tehaleh Industrial Park

Bonney Lake | Washington 98391

tehalēh®



Tehaleh Boulevard - Completion to SR162 scheduled for 2026

Tehaleh Industrial Park

198th Avenue East

Tehaleh Commerce Center

Property Highlights

- 340+ acres (commercial/industrial)
- Entitlements complete including zoning and environmental review
- Utilities stubbed to site
- Arterials, curbs, gutters sidewalk and street landscaping completed
- Shovel ready - Sites delivered rough graded at 1% to 2% slope on usable SF
- Extension of Tehaleh Boulevard to the Orting Highway (SR-162) by Q-1 2027
- CC&Rs and Commercial Owners Association to protect value
- Master storm water system off-site, allowing maximum lot efficiencies
- Stable, unconstrained gravelly soils, are ideal for year-round construction
- Available for sale

Dave Douglas, SIOR, CCIM
+1 253 203 1326
ddouglas@nai-psp.com

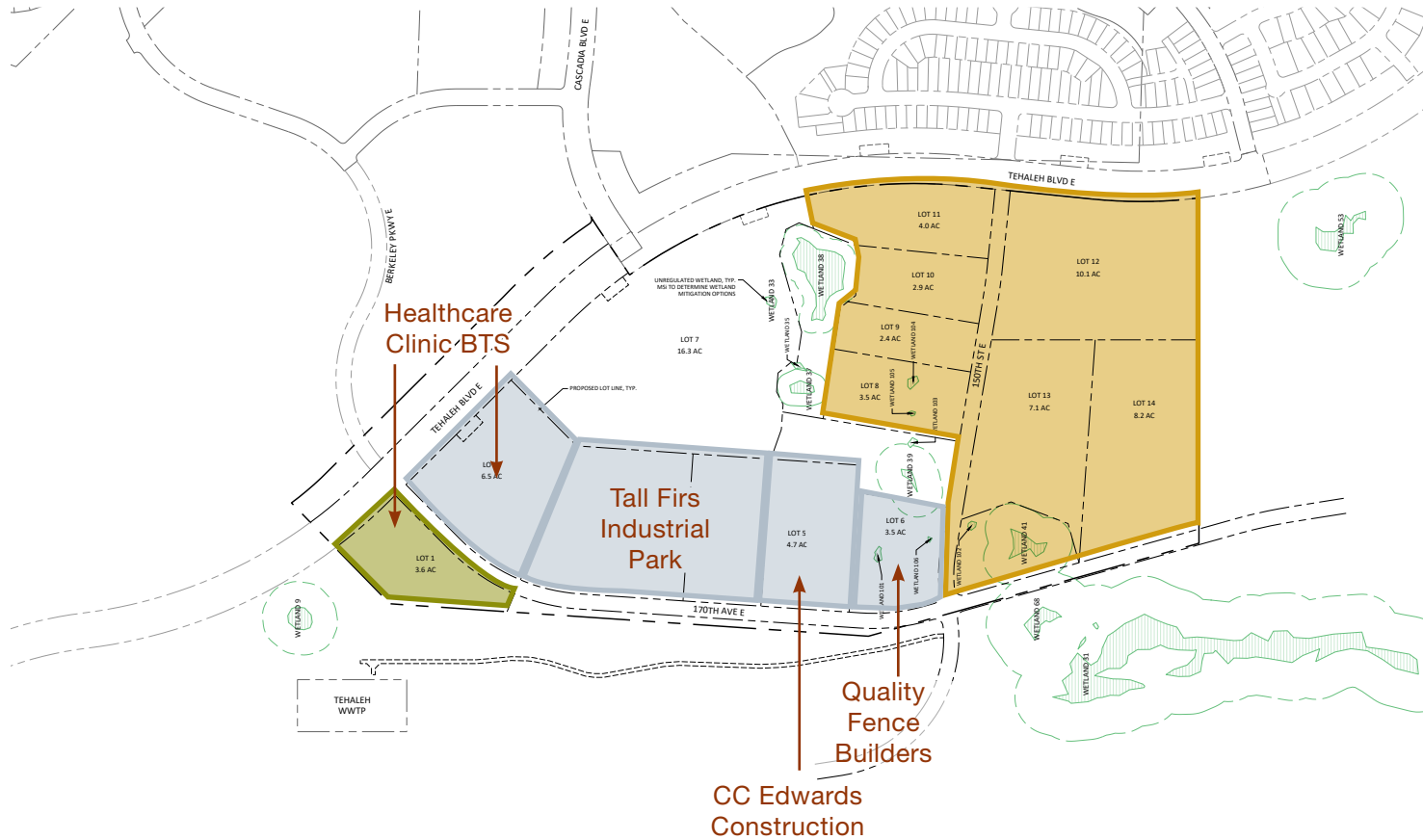
Kyle Schipper, SIOR
+1 253 203 1326
kschipper@nai-psp.com

Arie Salomon, SIOR, CCIM
+1 425 586 5636
asalomon@nai-psp.com

Kent Channing
+1 425 586 5628
kchanning@nai-psp.com

Tehaleh Commerce Center

Bonney Lake | Washington 98391



Tehaleh Commerce Center Plat

- Pending Sales
- Available
- 2028 Lot Delivery
- Sold



Tehaleh Industrial Park

Bonney Lake | Washington 98391

tehaleh®



Entry to Tehaleh Industrial Park



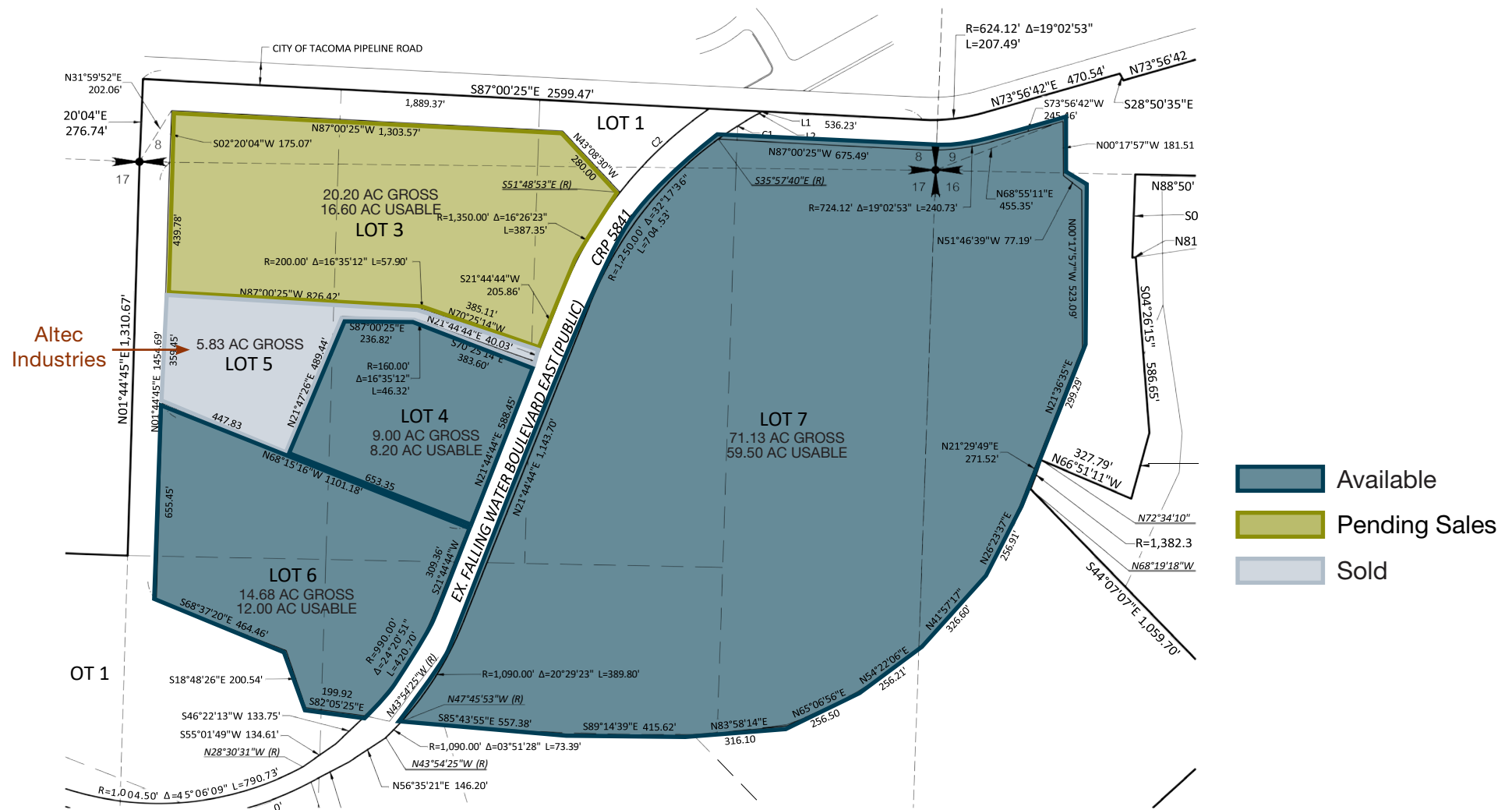
Lot 2.B.1



Lot 2.B.2

Tehaleh Industrial Park

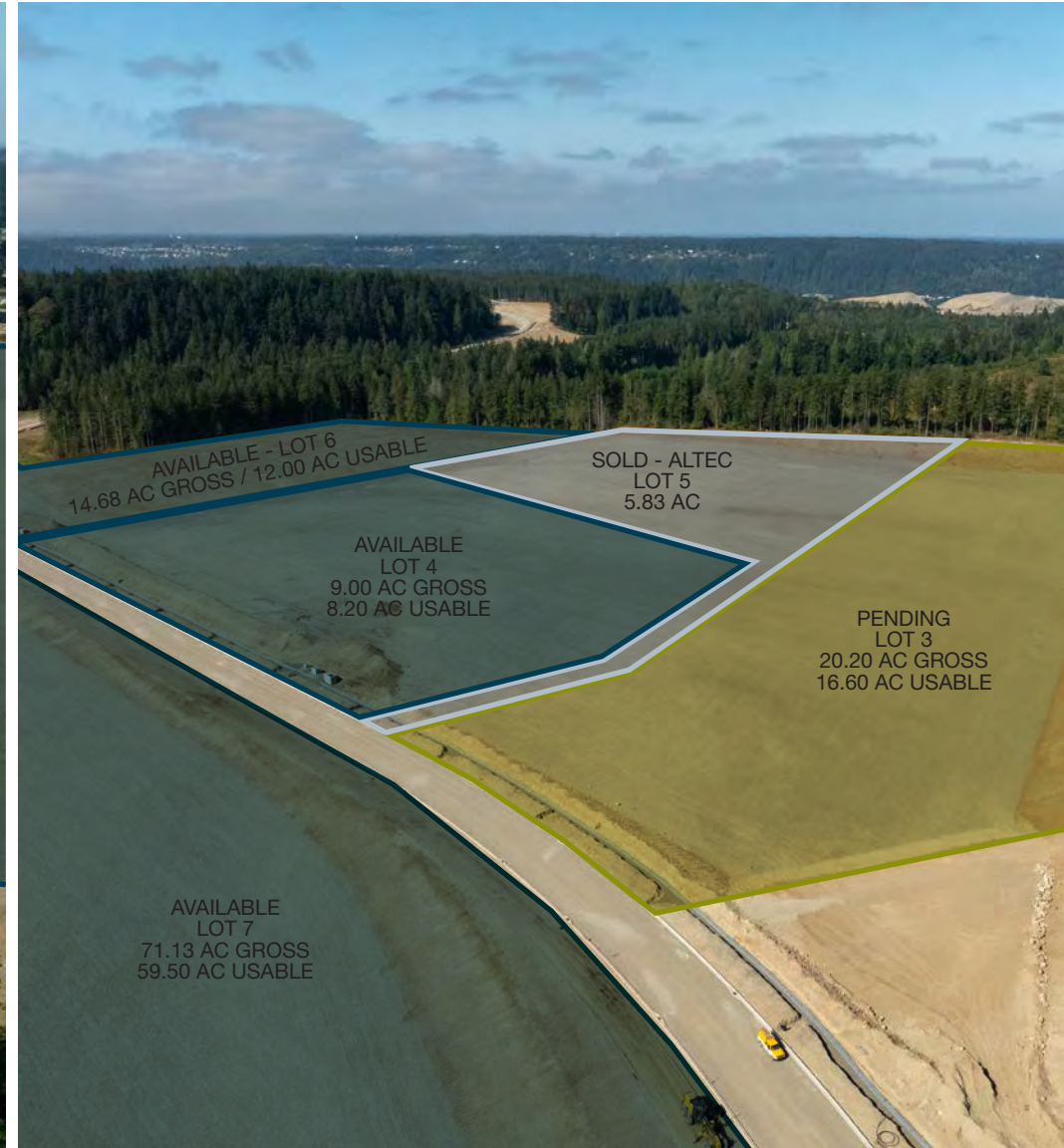
Bonney Lake | Washington 98391



Tehaleh Industrial Park

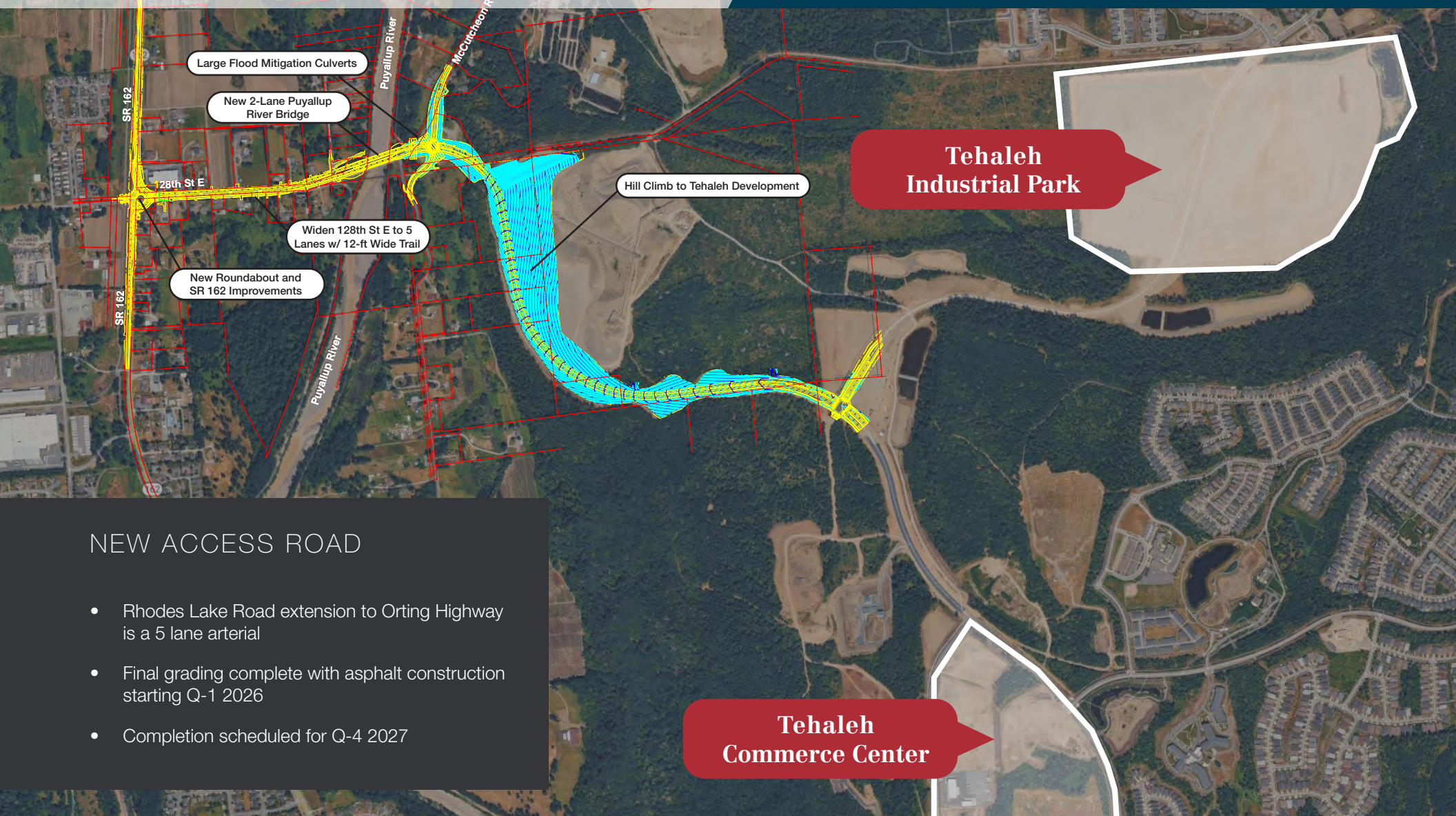
Bonney Lake | Washington 98391

tehaleh®



Tehaleh Commerce Center Tehaleh Industrial Park

Bonney Lake | Washington 98391



NEW ACCESS ROAD

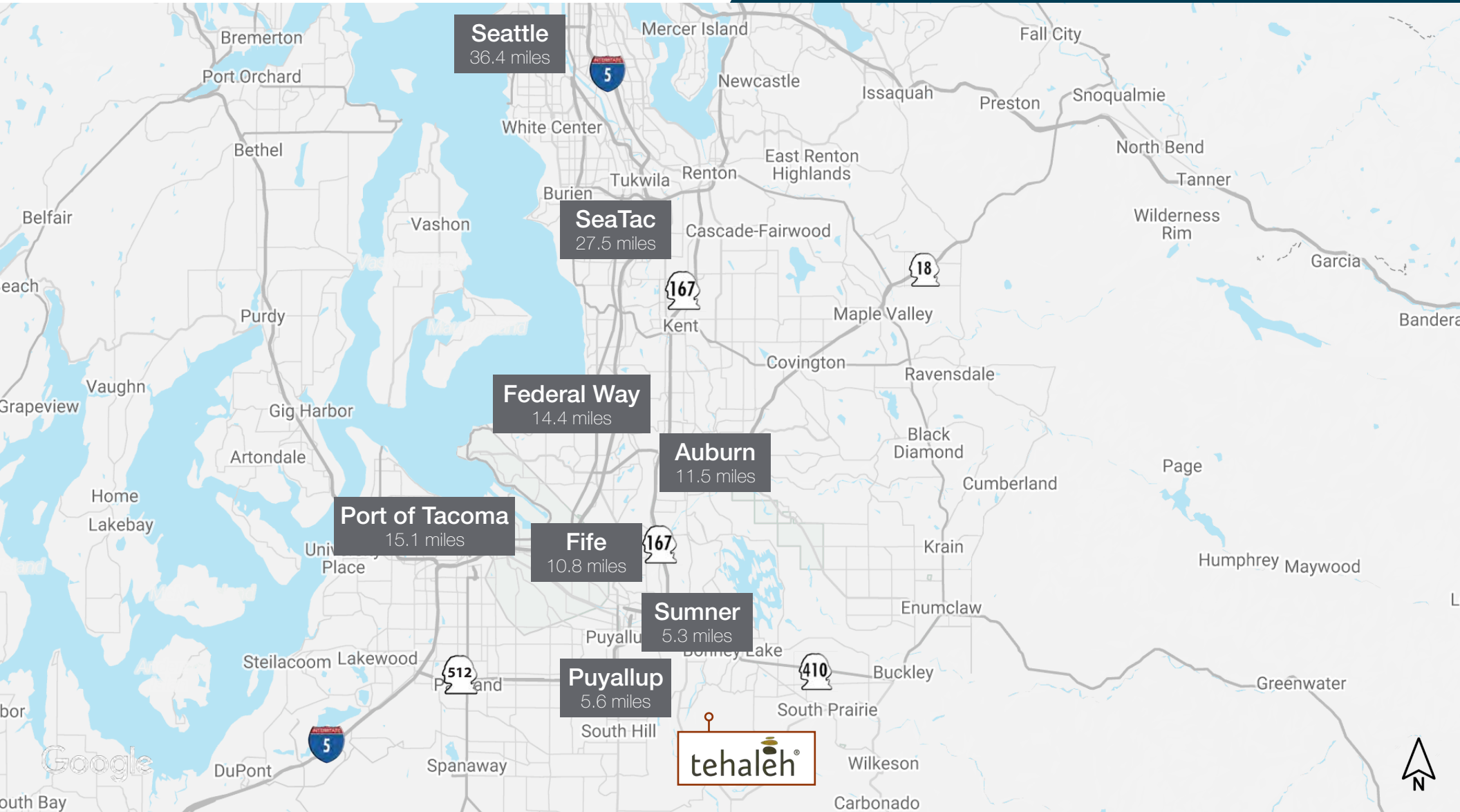
- Rhodes Lake Road extension to Orting Highway is a 5 lane arterial
- Final grading complete with asphalt construction starting Q-1 2026
- Completion scheduled for Q-4 2027

**Tehaleh
Commerce Center**

**Tehaleh
Industrial Park**

Tehaleh Commerce Center Tehaleh Industrial Park

Bonney Lake | Washington 98391



Exclusively marketed by:



Dave Douglas

Partner - SIOR, CCIM
+1 253 203 1326
ddouglas@nai-ppsp.com

Kyle Schipper

Partner - SIOR
+1 253 203 1326
kschipper@nai-ppsp.com

Kent Channing

Partner
+1 425 586 5628
kchanning@nai-ppsp.com

Arie Salomon

Principal - SIOR, CCIM
+1 425 586 5636
asalomon@nai-ppsp.com

