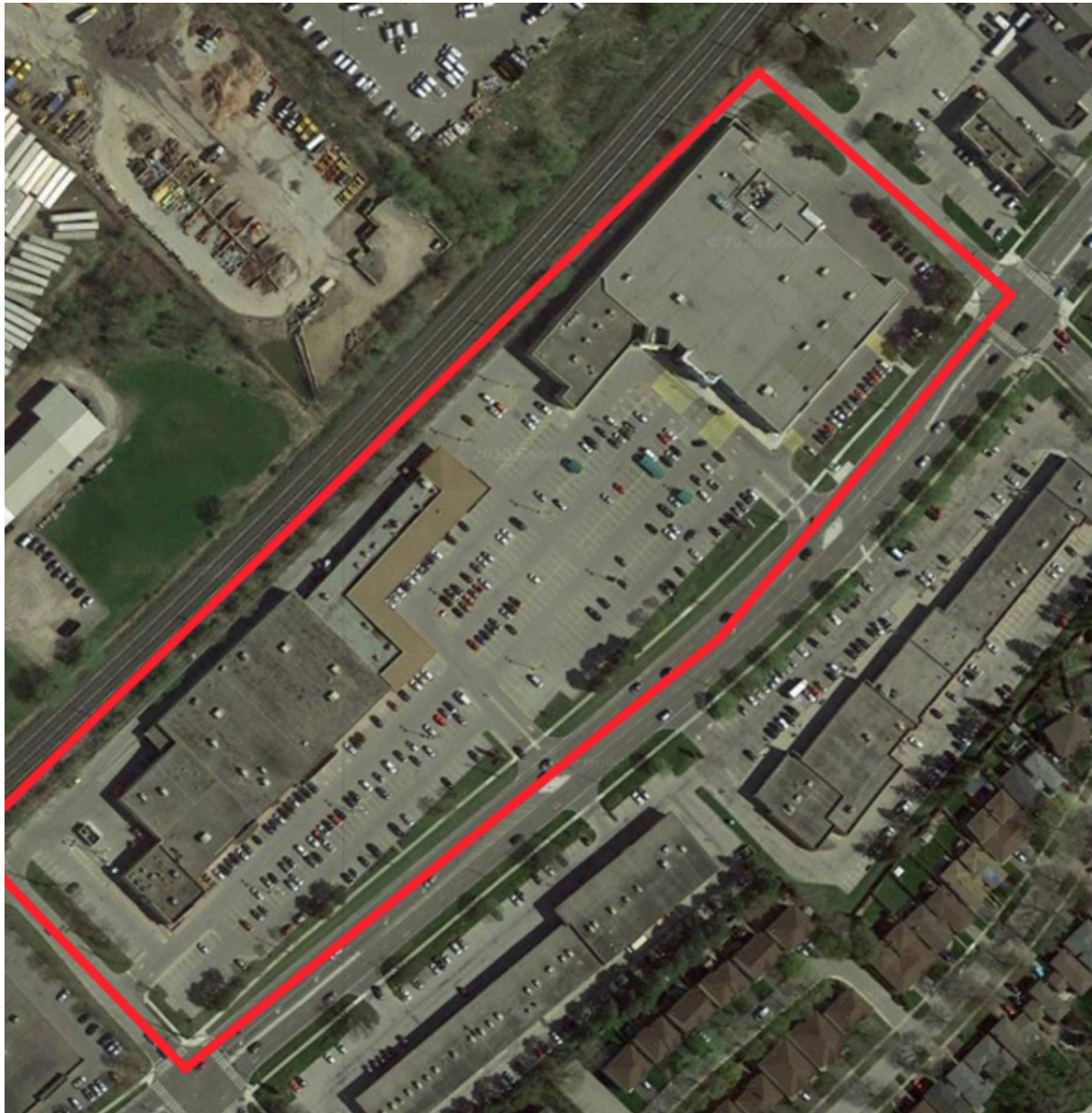






Woodview Place, Burlington, Ontario



Located at Fairview Street & Woodview Road in Burlington, this grocery anchored centre offers 15 units totalling 145,401 sq. ft featuring retailers such as Food Basics, Bad Boy, Party City and LCBO.

Population		Average Household Income	
270,557		\$142,990	
Households with Children		Median Age	
47%		42 years	

All figures are within a 10 Km radius.

Source: All demographic information is Copyright 2019 by Environics Analytics (EA).



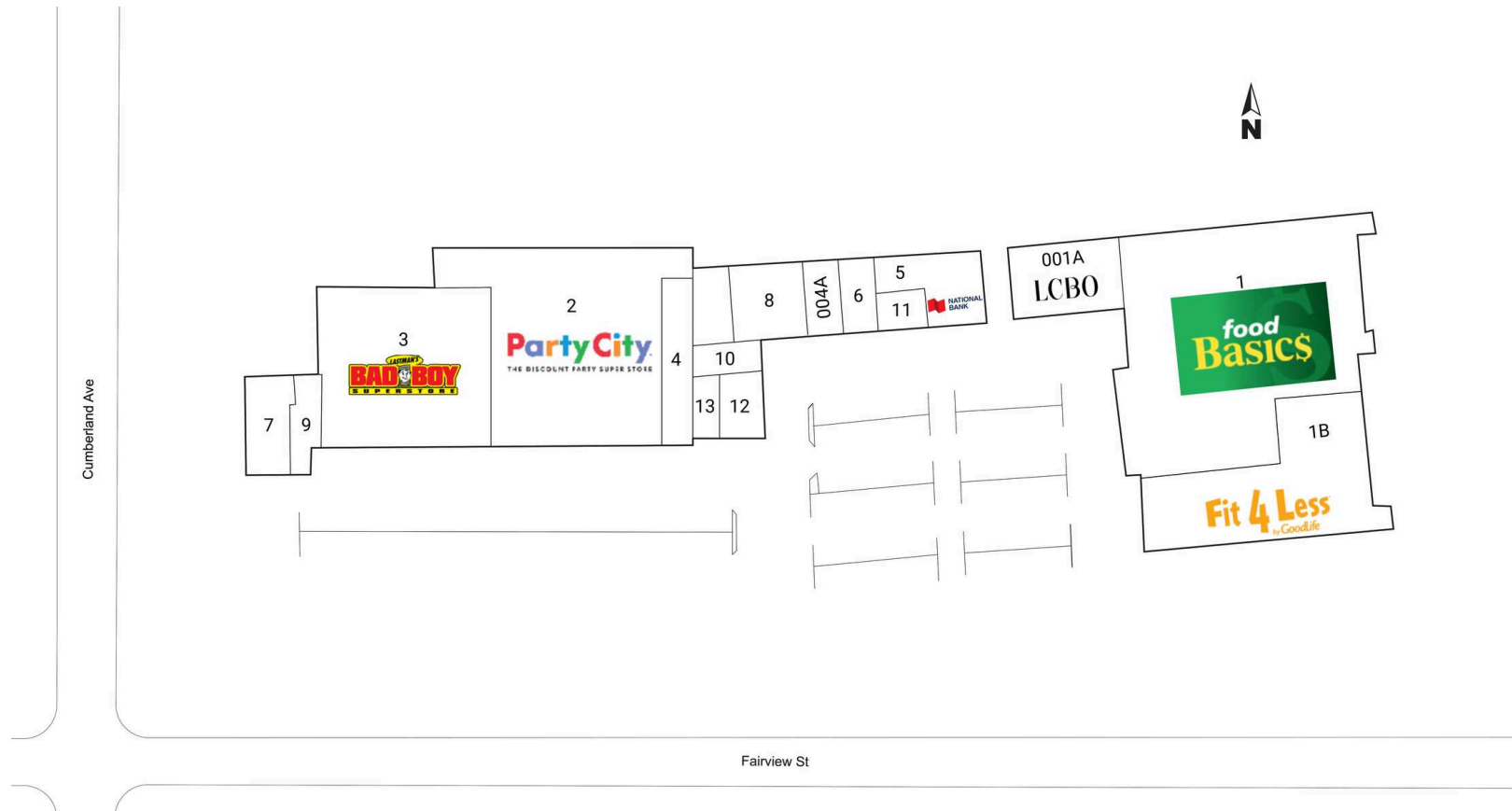
Site Plan

Woodview Place

Burlington, Ontario
3295 Fairview Street

Ryan Ramlal
rramlal@riocan.com
416-866-3033 x24960

■ Shadow Anchor



001A	LCBO	10,360 SF	6	Ichiban Sushi House	2,453 SF
1	Food Basics	45,268 SF	7	Burger King	3,143 SF
1B	Fit 4 Less	20,000 SF	8	Orangetheory Fitness	3,038 SF
2	Party City	22,809 SF	9	Fionn MacCool's	2,131 SF
3	Bad Boy	18,943 SF	10	Weight Watchers	1,366 SF
004A	Available	1,200 SF	11	Pita Pit	1,358 SF
4	Moors	6,568 SF	12	Beauty Supply Outlet	2,106 SF
5	National Bank Of Canada	3,488 SF	13	The Vac Connection	1,170 SF