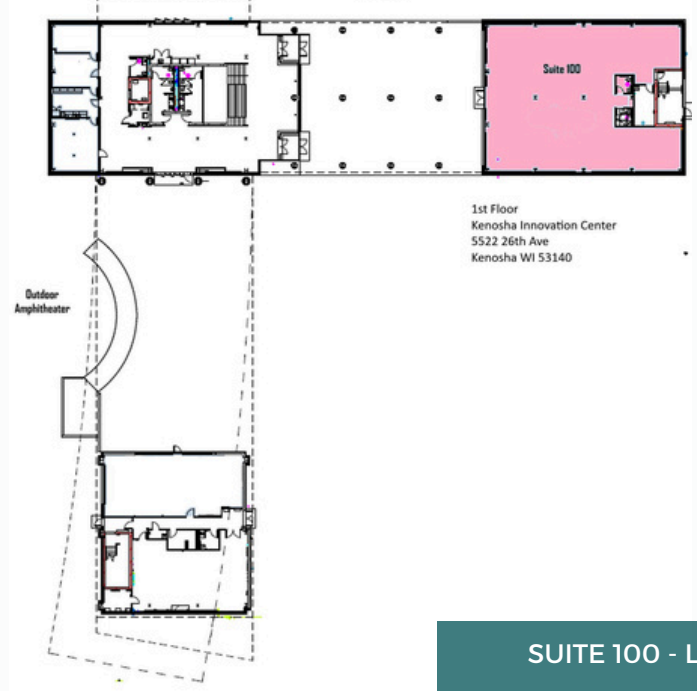


# PREMIUM LEASE SPACE



SUITE 100 - LAYOUT

SUITE 100 | KENOSHA INNOVATION CENTER

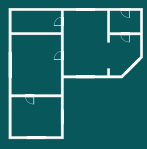


**4,545 SF**  
FULL SERVICE GROSS  
SHELL SPACE

**\$30**  
/sq ft



**1st FLOOR**  
PREMIUM  
LOCATION



**FLEXIBLE**  
LAYOUT  
YOUR VISION



**IMMEDIATE**  
AVAILABILITY



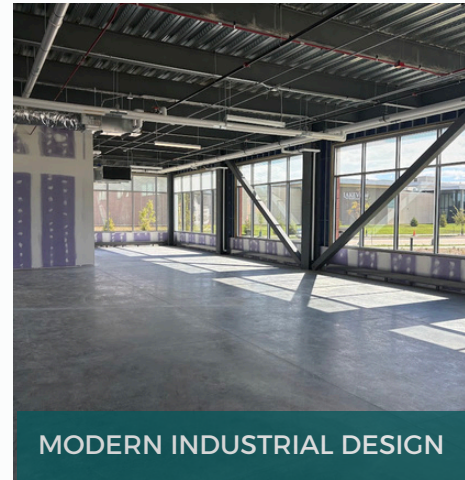
**BUILT FOR**  
INNOVATION

**KENOSHA INNOVATION CENTER (KIC)**

A state of the art facility built to inspire innovation, collaboration, and economic growth in the heart of Kenosha, Wisconsin. This three story, 64,000 square foot building serves as the cornerstone of the 107 acre Kenosha Innovation Neighborhood (KIN), a mixed-use redevelopment. Tenants can take advantage of a variety of amenities, including the Launch Pad, conference rooms, the Skyline Lounge, and an outdoor amphitheater.



OPEN & FLEXIBLE



MODERN INDUSTRIAL DESIGN

**SPACE HIGHLIGHTS**



A 4,545 SF full service space designed to support your operations. With private double-door entrances, this suite makes moving equipment and large shipments simple and efficient.



Expansive windows wrap the space, providing exceptional visibility and natural light. Open floor plan concept complete with private restrooms.

**AMENITIES & COMMUNITY**



**LAUNCH PAD**  
Event &  
Innovation  
Space



**CONFERENCE ROOMS**  
Meet. Connect.  
Collaborate.



**107 ACRE  
INNOVATION  
NEIGHBORHOOD**  
A Thriving Hub for  
Business & Growth



**SKYLINE LOUNGE**  
Relax. Recharge.  
Inspire.



**OUTDOOR  
AMPHITHEATER**  
Events. Gatherings.  
Community.

**WHERE IDEAS BECOME  
COMPANIES,  
COMPANIES CREATE JOBS AND  
OPPORTUNITIES MULTIPLY**



**DAVID SALINAS**  
KIC Director



262-467-2682



KIC@innovateKIN.org



5522 26<sup>th</sup> Ave, Kenosha, WI

