



NEWMARK

Seventeen Hundred

**EAST PUTNAM AVENUE
GREENWICH, CONN.**

Building Renovation Complete

Following a full-scale renovation, 1700 East Putnam features best-in-class interior finishes and is tailored for high-end professional service firms seeking a sophisticated, move-in ready office environment.

- **Brand new renovated lobby and on-site cafe by Aux Délices**
- **Renovated corridors, restrooms, and common areas**
- **On-site security/concierge, and easy in-and-out parking**
- **Fitness center with towel service and locker rooms**
- **Access to Hyatt Regency for dining, hotel, and conference facilities**

Slide Show





1700
East Putnam Avenue



Building Highlights

PROPERTY OVERVIEW

Formerly the Fortune Brands headquarters, 1700 East Putnam offers pre-built and furnished office suites in a premier Greenwich location. Just off I-95 between Exits 5 & 6 and half a mile from the Old Greenwich Metro-North Station, the property is easily accessible from the Merritt Parkway and just minutes from downtown Greenwich and Stamford. It's also adjacent to the Greenwich Hyatt, offering full conference, dining, and hotel amenities.

ON-SITE AMENITIES

- Three-Story Atrium Lobby
- Fitness Center & Locker Rooms
- Aux-Delices Cafe
- Executive Garage Parking with Private Elevator
- Surface Parking (3/1,000 SF)
- On-site Security & Property Manager
- 24/7 Access
- Fiber Optic Internet
- Outdoor Seating Area
- Shuttle to Stamford Train Station



STAMFORD CBD

Dual-Market Advantage

1700 East Putnam offers a strategic location with direct access to both Stamford's vibrant business district and the established professional community of Greenwich. Whether you're tapping into Stamford's growing corporate ecosystem or building client relationships across lower Fairfield County, the property positions your business at the center of it all.



GREENWICH AVENUE

Area Map

- 2 minute drive to Interstate 95, exit 5
- 8 minute drive to iconic Greenwich Avenue
- 3 minute drive to Old Greenwich Train Station
- 20 minute drive to Westchester County Airport



DRIVE TIMES

WESTCHESTER COUNTY AIRPORT20 MIN.
WHITE PLAINS23 MIN.
MANHATTAN45 MIN.
LAGUARDIA INT. AIRPORT48 MIN.

TRAIN (FROM OLD GREENWICH)

STAMFORD TRAIN STATION 3 MIN.
GREENWICH TRAIN STATION 7 MIN.
GRAND CENTRAL TERMINAL 50 MIN.

Aerial Tour



CLICK HERE

Seventeen Hundred

EAST PUTNAM AVENUE



HYATT
REGENCY
GREENWICH



Availability Summary

PREMISES

Suite 101	12,215 RSF	Whitebox
Suite 211	3,364 RSF	Prebuild under construction
Suite 400	17,589 RSF	Built
Suite 406	1,856 RSF	Built
Suite 409	4,923 RSF	Built & furnished
Suite 410	3,867 RSF	Prebuild under construction

NEWMARK

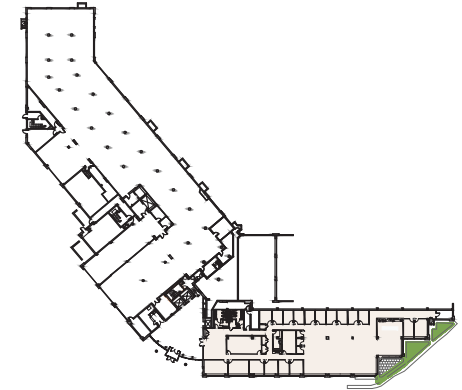


Suite 101

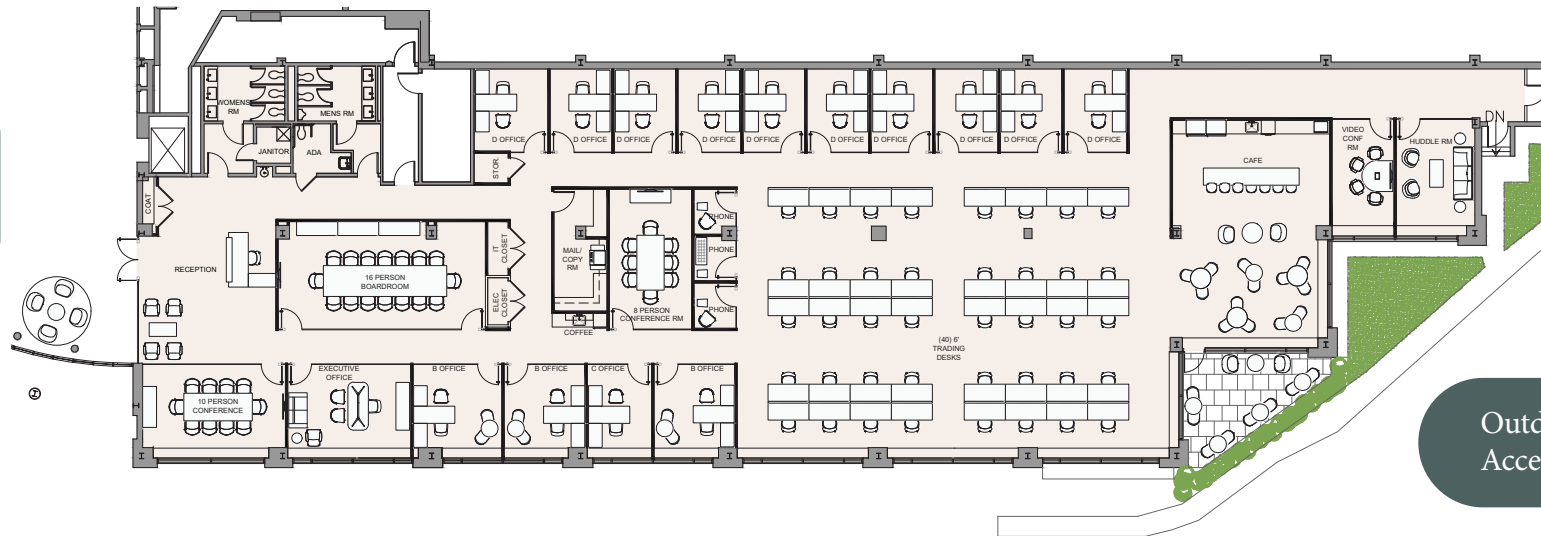
12,215 RSF

Concept Plan
Open Layout

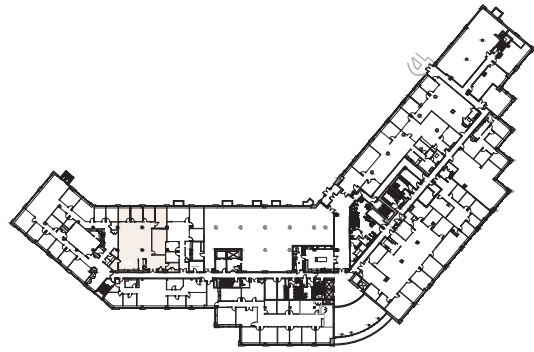
Workspace	Seats
Executive office	1
Standard offices	14
Conference rooms	4
Workstations	40
Reception	1
Total headcount	60



Building
Entrance
& Lobby



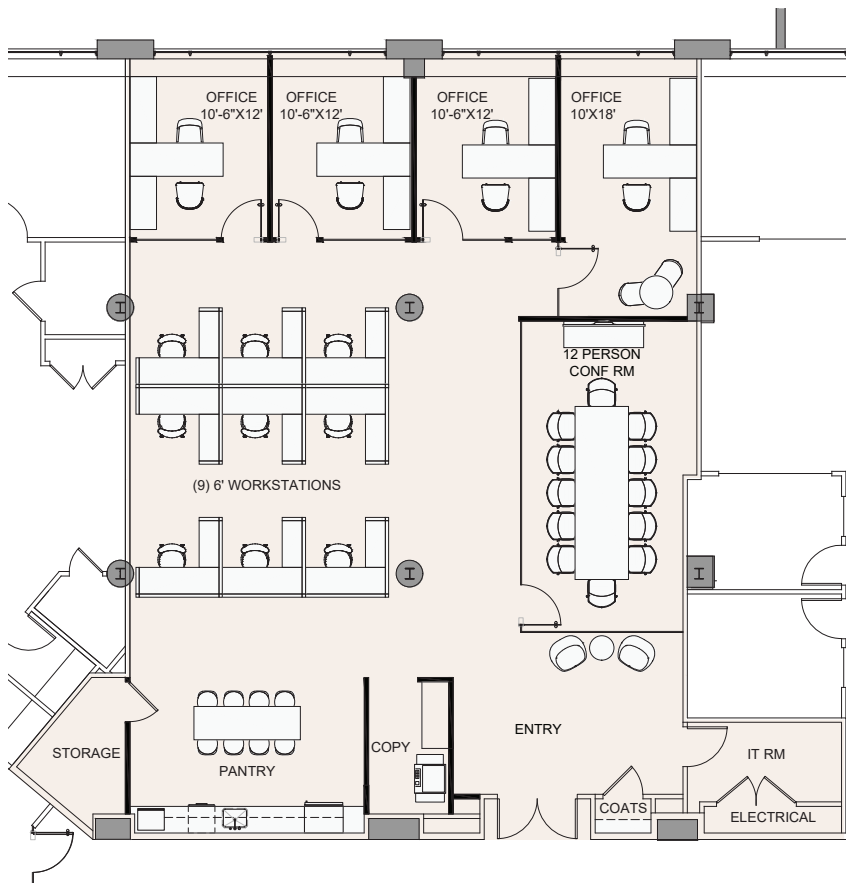
Outdoor
Access



Suite 211

3,364 RSF

Prebuild Concept Plan
Under Construction



Workspace	Seats
Executive offices	2
Standard offices	5
Workstations	2
Reception	1
Total headcount	10

Support	Count
Pantry	1
Conference room	1

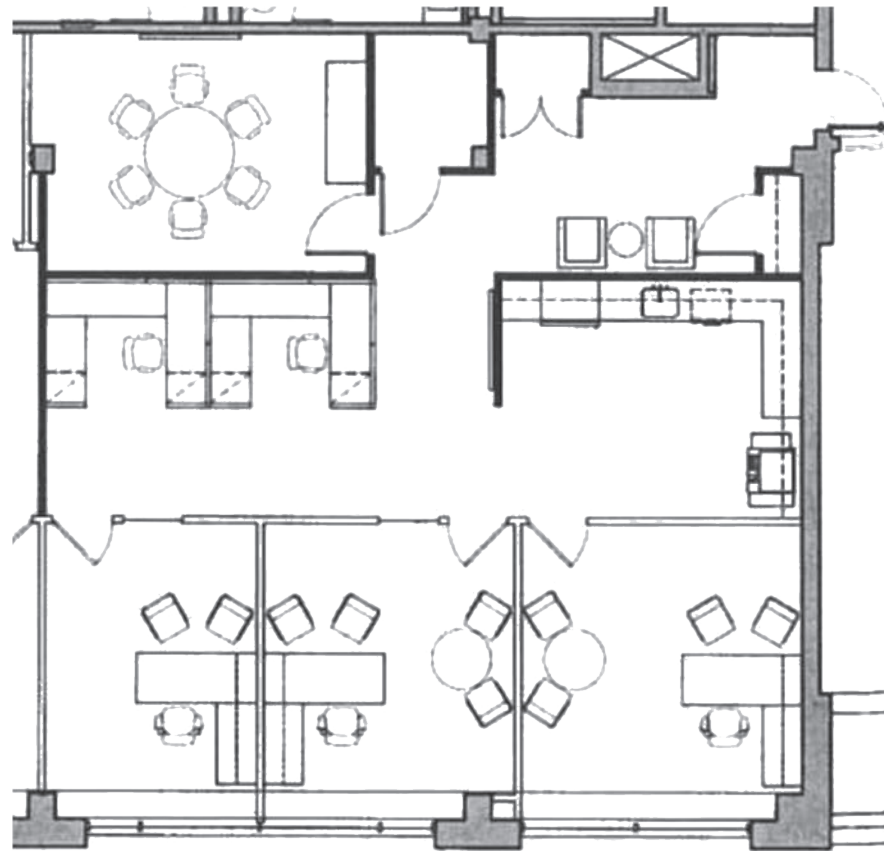
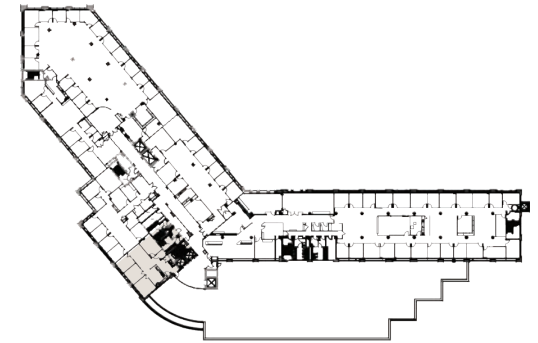
Suite 406

1,856 RSF

Built

Workspace	Seats
Executive offices	1
Standard offices	2
Workstations	4
Total headcount	7

Support	
IT room	1
Conference room	1
Pantry	1
Copy area	1
Storage	1



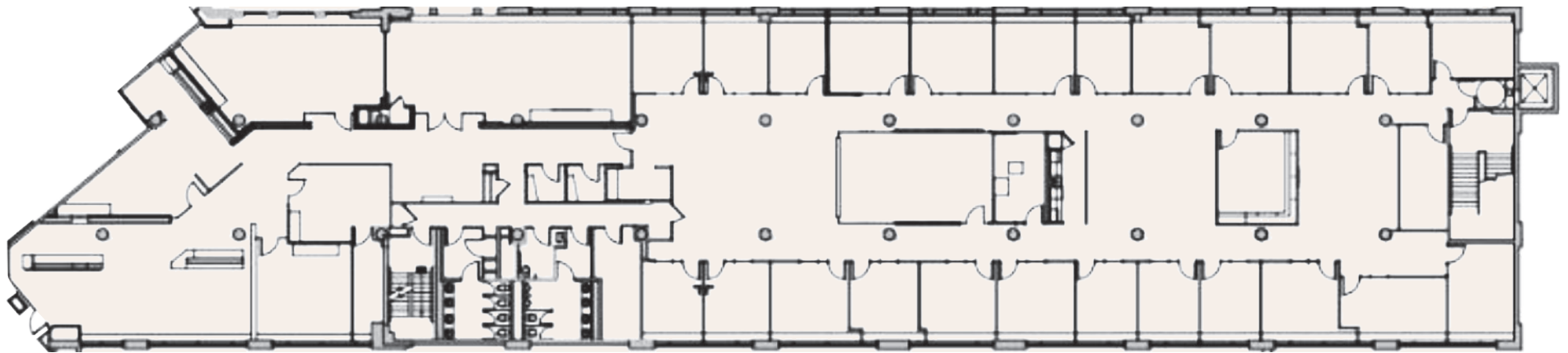
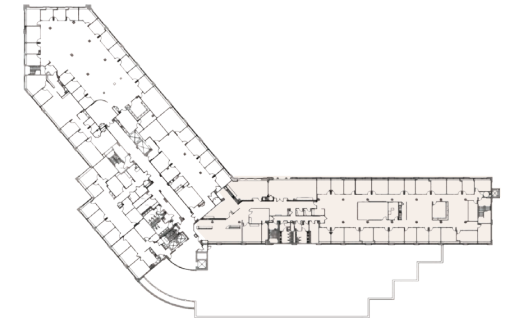
Suite 400

17,589 RSF

Existing Conditions
May 2026 Delivery

Workspace	Seats
Executive offices	2
Standard offices	24
Total headcount	26

Support	
IT room	1
Conference room	4
Pantry	1
Copy area	1
Storage	2
Restrooms	2



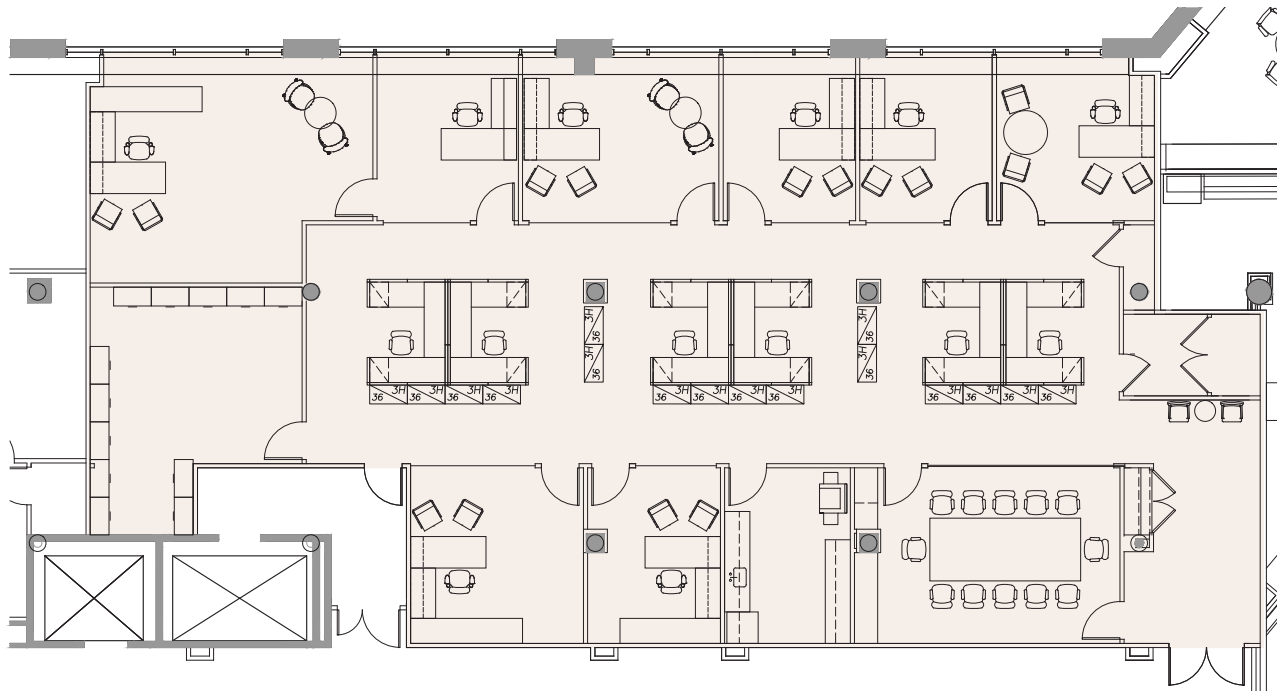
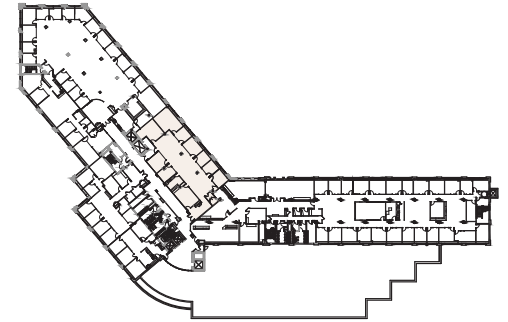
Suite 409

4,923 RSF

Existing Conditions
Fully Furnished

Workspace	Seats
Executive offices	3
Standard offices	5
Workstations	6
Total headcount	14

Support	
IT room	1
Conference room	1
Pantry	1
Copy area	1
Storage	1



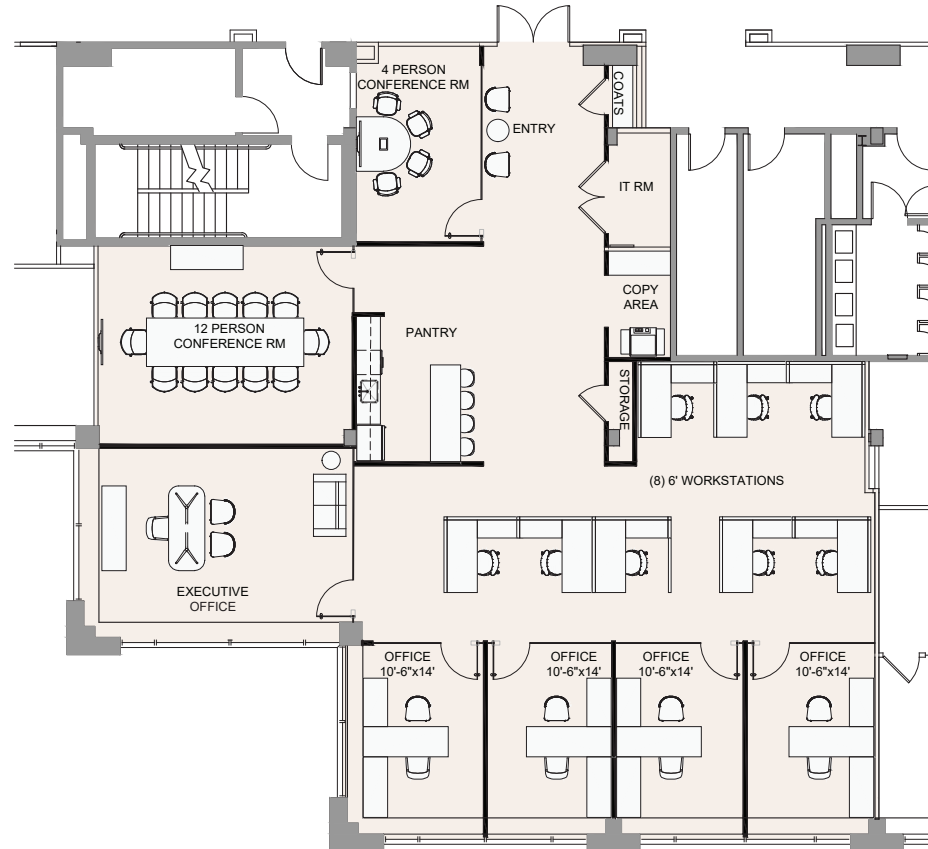
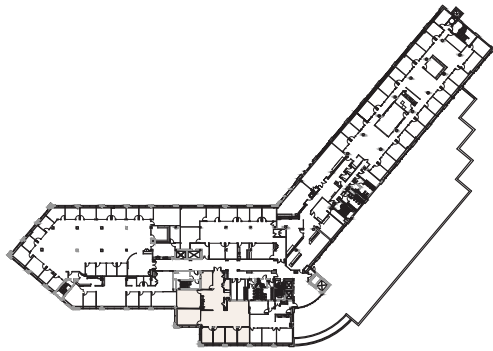
Suite 410

3,867 RSF

Prebuild Concept Plan
Under Construction

Workspace	Seats
Executive office	1
Standard offices	4
Workstations	8
Total headcount	13

Support	
IT room	1
Conference rooms	2
Pantry	1
Copy area	1
Storage	1





Seventeen Hundred

EAST PUTNAM AVENUE
GREENWICH, CONN.

Ben Goldstein

Senior Managing Director
t 203-705-3295
benjamin.goldstein@nmrk.com

Allan Murphy

Senior Managing Director
t 203-912-1650
allan.murphy@nmrk.com

Reed Signer

Associate
t 203-531-3619
reed.signer@nmrk.com

Timothy R Rorick

Designated Broker
tim.rorick@nmrk.com

The information contained herein has been obtained from sources deemed reliable but has not been verified and no guarantee, warranty or representation, either express or implied, is made with respect to such information. Terms of sale or lease and availability are subject to change or withdrawal without notice.

NEWMARK