

Commercial Office Space for Lease

ELLIOTT COURT

2107 ELLIOTT AVE, SEATTLE

SUITE #202 AVAILABLE

- 1,115 sf
- \$30/sf fully serviced, net of electric
- City view
- Suite contains bathroom, shower, and kitchenette
- 11'-6" ceilings
- Air conditioned
- Secure underground parking available
- Beautiful courtyard entry
- 1 block to Pike Place Market and Seattle waterfront



Allegra Properties
DEVELOPMENT • MANAGEMENT • INVESTMENT

Allegra Properties
88 Lenora St
Seattle, WA 98121
www.allegraproperties.com

Contact:
Boris Castellanos
206.812.7812
boris@allegraproperties.com

ELLIOTT COURT

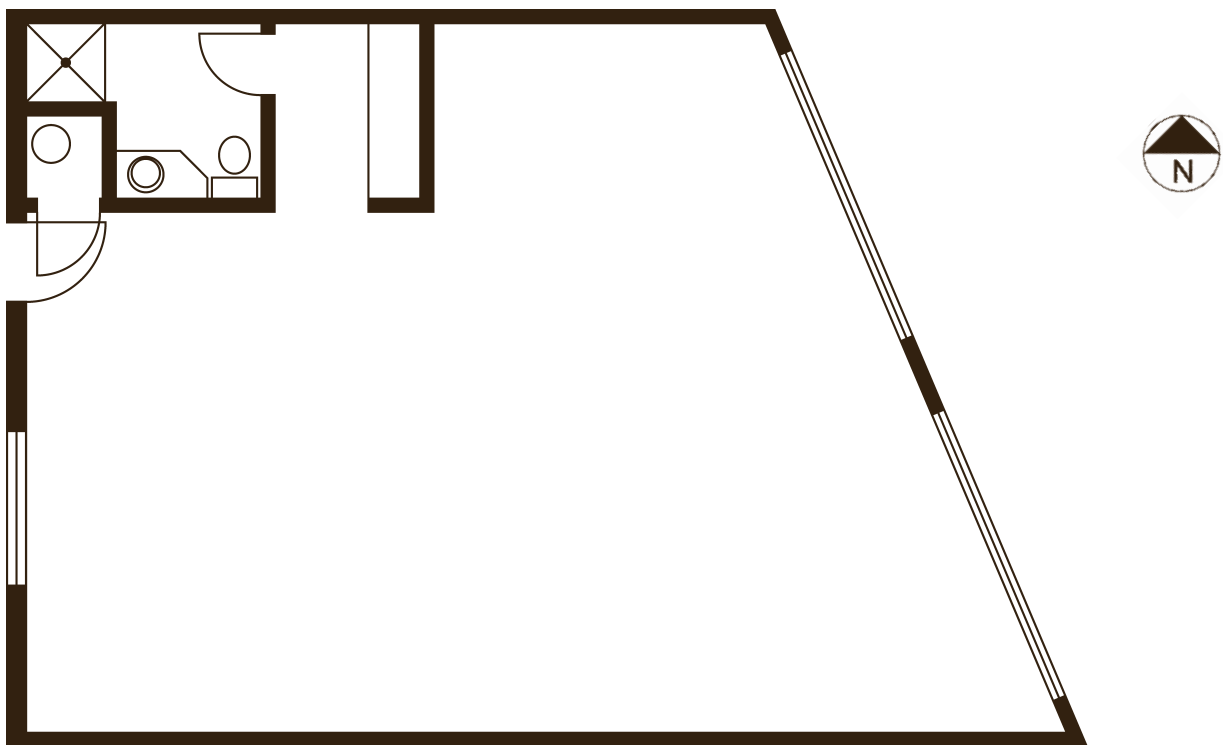
2107 ELLIOTT AVE, SEATTLE

Interior Photography by Taylor Roberts



ELLIOTT COURT

2107 ELLIOTT AVE, SEATTLE



Elliott Court – Suite #202

This suite features 11 foot high ceilings, a private bathroom, shower, and kitchenette, and a wall of windows to provide natural light and a city view.