

# OFFICE SPACE FOR LEASE

## 15335 Morrison Street | Sherman Oaks



For more information  
please contact:

### Todd Wuschnig

Principal  
818.933.0301  
twuschnig@lee-re.com  
DRE #01367230

### Stacy Vierheilg-Fraser

Principal  
818.933.0313  
svierheilg@lee-re.com  
DRE #00986794



COMMERCIAL REAL ESTATE SERVICES

Lee & Associates® - LA North/Ventura, Inc. • Corporate ID #01191898  
A Member of the Lee & Associates® Group of Companies  
15060 Ventura Blvd., Suite 100 • Sherman Oaks, CA 91403  
P:818.986.9800 F:818.933.0405 • www.leelanorth.com

#### AVAILABLE

Suite	Size
117	±1,454 SF
140	±676 SF
150	±1,556 SF
225	±1,181 SF
237	±824 SF

#### LEASE RATE

\$2.35/RSF FSG

#### PARKING

3/1,000 SF Surface Spaces — **FREE PARKING**

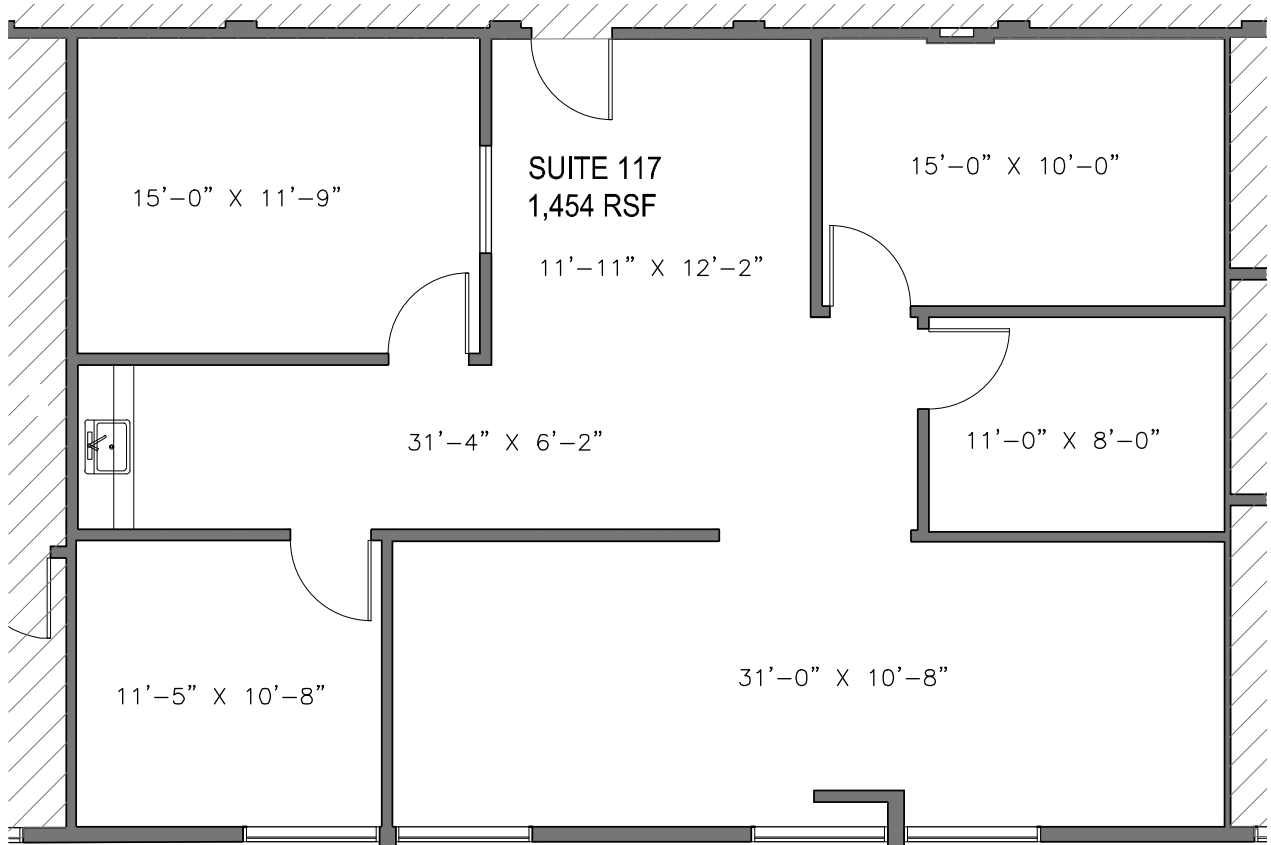
#### PROPERTY HIGHLIGHTS

- » Free Visitor Parking & Additional Street Parking
- » Hvac Hours: 5am to 10pm; 7 Days a Week
- » New Common Area Renovations
- » On-Site Cafe
- » Newly Remodeled Common Areas
- » Tree-Lined Property
- » Sit Down Lobby
- » Immediate Access to the 101 & 405 Freeways
- » Walking Distance to the Sherman Oaks Galleria

# OFFICE SPACE FOR LEASE

15335 Morrison Street | Sherman Oaks

## SUITE 117 FLOOR PLAN



NOT TO SCALE

For more information please contact:

**Todd Wuschmig**

Principal

818.933.0301

twuschmig@lee-re.com

DRE #01367230

**Stacy Vierheilg-Fraser**

Principal

818.933.0313

svierheilg@lee-re.com

DRE #00986794



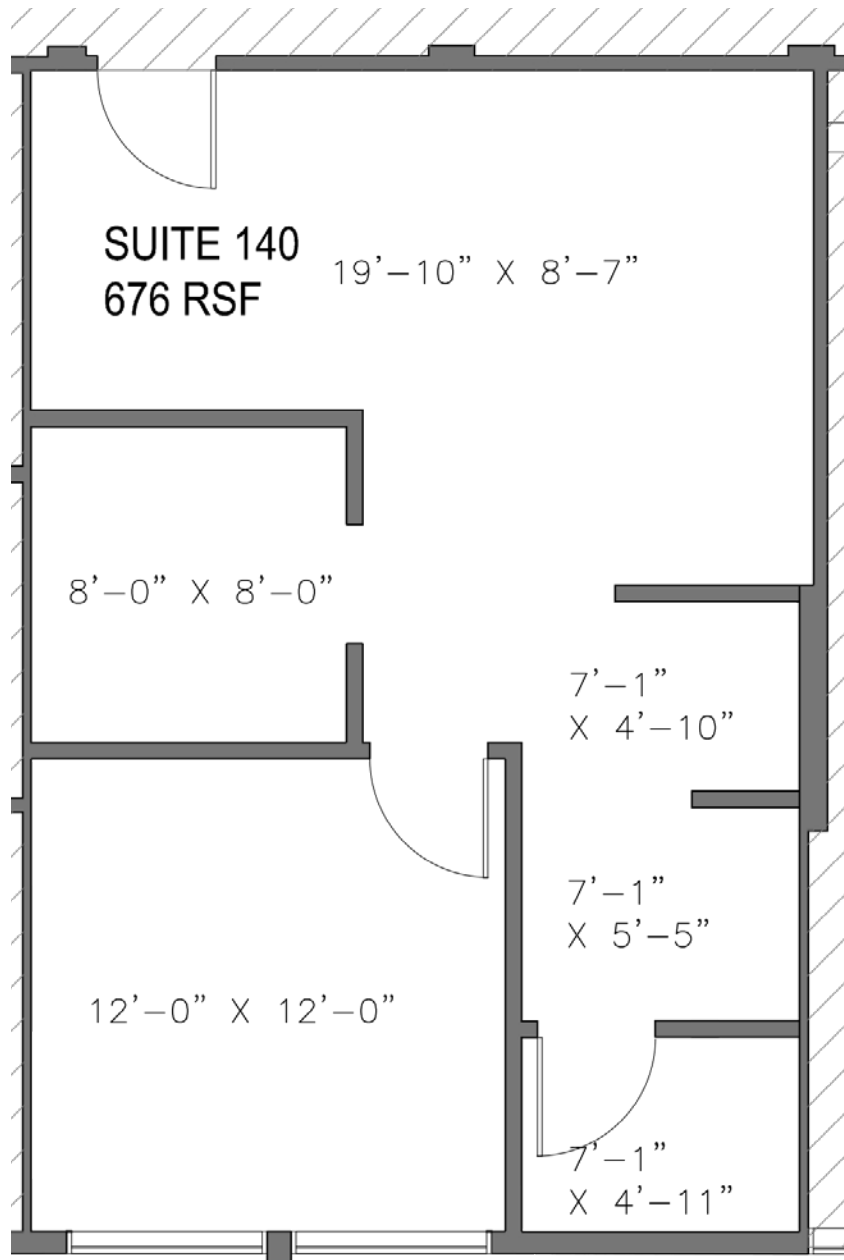
Lee & Associates® - LA North Ventura, Inc. • Corporate ID #01191898  
A Member of the Lee & Associates® Group of Companies  
15060 Ventura Blvd., Suite 100 • Sherman Oaks, CA 91403  
P:818.986.9800 F:818.933.0405 • www.leenorth.com

All information furnished regarding the property is from sources deemed reliable, but no warranty or representation is made as to the accuracy thereof. This information is submitted subject to errors, omissions, change of price or terms, prior sale or lease, or withdrawal without notice. No liability of any kind is to be imposed on the broker herein.

# OFFICE SPACE FOR LEASE

15335 Morrison Street | Sherman Oaks

## SUITE 140 FLOOR PLAN



NOT TO SCALE

For more information please contact:

**Todd Wuschnig**

Principal

818.933.0301

twuschnig@lee-re.com

DRE #01367230

**Stacy Vierheilig-Fraser**

Principal

818.933.0313

svierheilig@lee-re.com

DRE #00986794



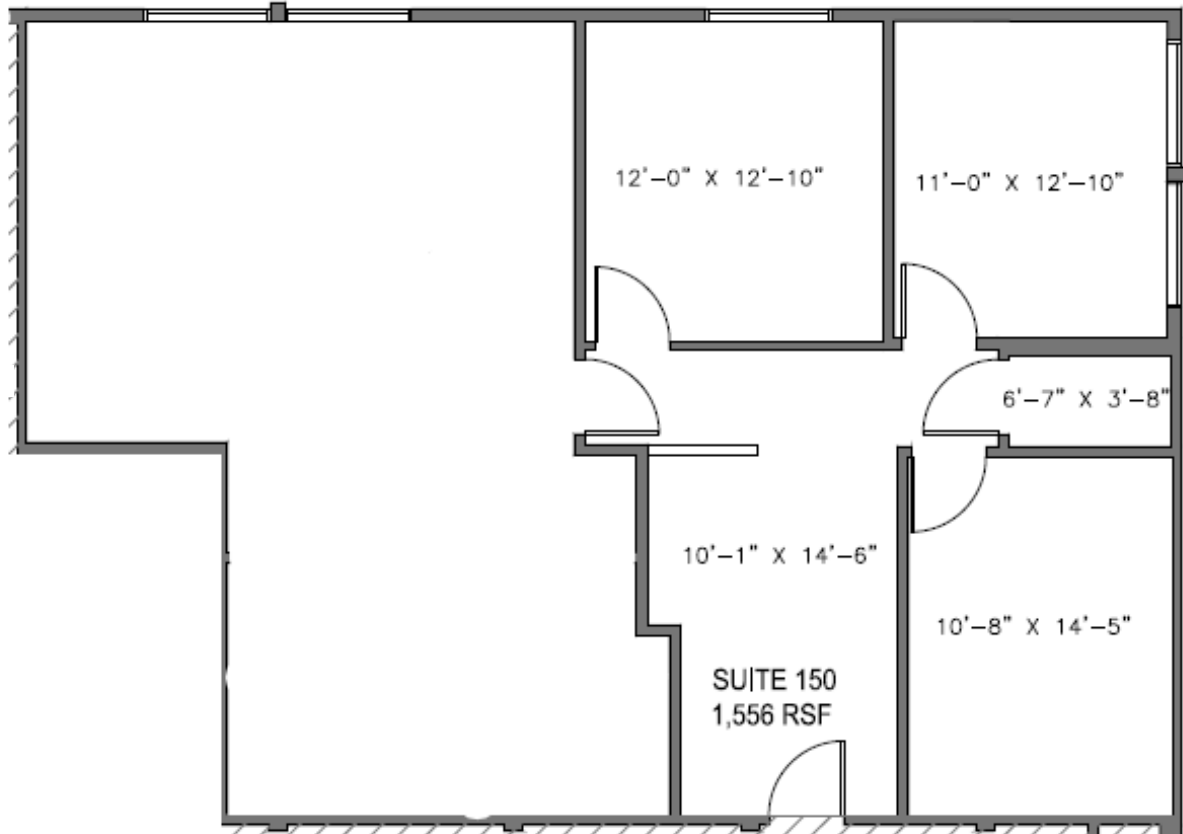
Lee & Associates® - LA North Ventura, Inc. • Corporate ID #01191898  
A Member of the Lee & Associates® Group of Companies  
15060 Ventura Blvd., Suite 100 • Sherman Oaks, CA 91403  
P:818.986.9800 F:818.933.0405 • www.leenorth.com

All information furnished regarding the property is from sources deemed reliable, but no warranty or representation is made as to the accuracy thereof. This information is submitted subject to errors, omissions, change of price or terms, prior sale or lease, or withdrawal without notice. No liability of any kind is to be imposed on the broker herein.

# OFFICE SPACE FOR LEASE

15335 Morrison Street | Sherman Oaks

## SUITE 150 FLOOR PLAN



NOT TO SCALE

For more information please contact:

**Todd Wuschnig**

Principal

818.933.0301

twuschnig@lee-re.com

DRE #01367230

**Stacy Vierheilig-Fraser**

Principal

818.933.0313

svierheilig@lee-re.com

DRE #00986794



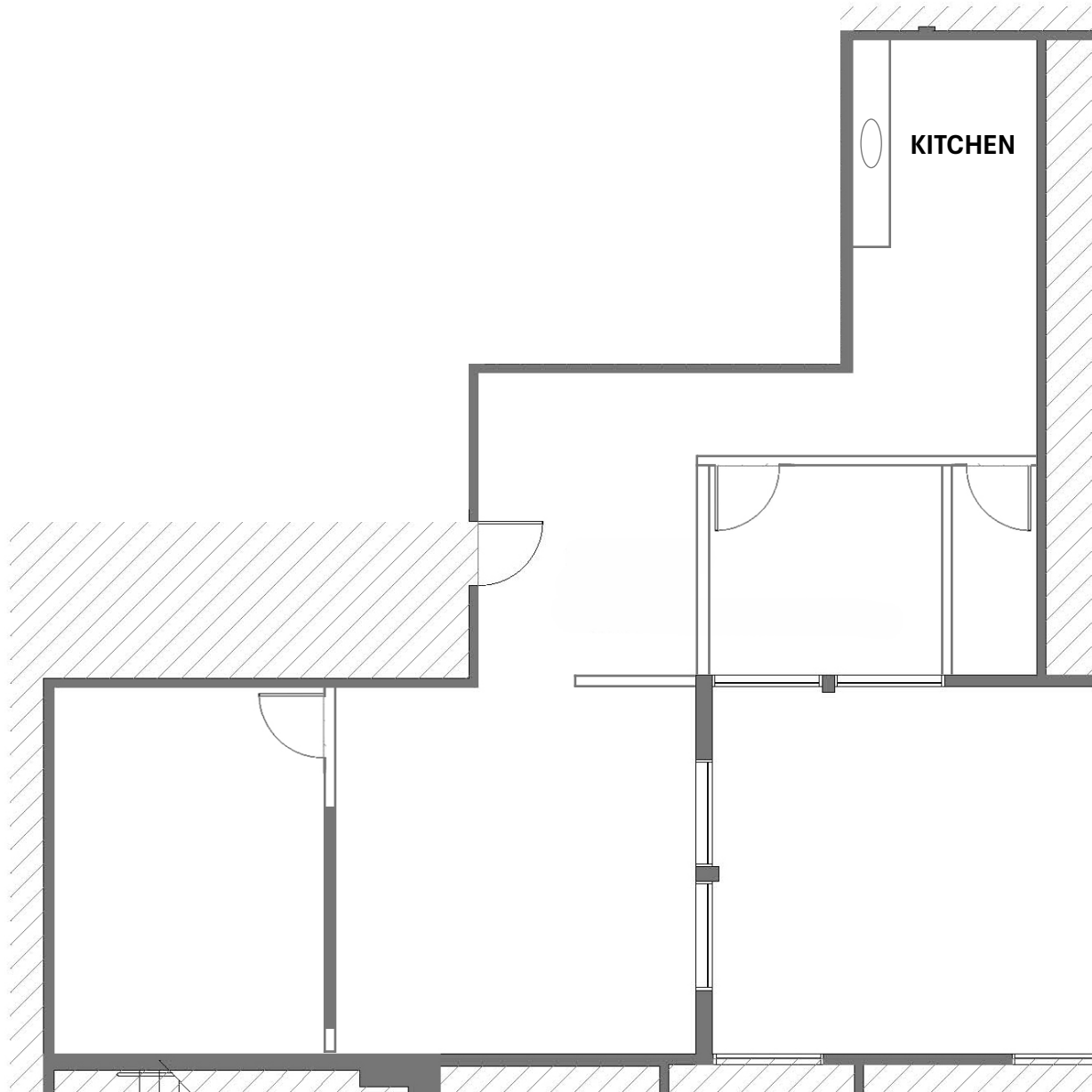
Lee & Associates® - LA North Ventura, Inc. • Corporate ID #01191898  
A Member of the Lee & Associates® Group of Companies  
15060 Ventura Blvd., Suite 100 • Sherman Oaks, CA 91403  
P:818.986.9800 F:818.933.0405 • www.leanorth.com

All information furnished regarding the property is from sources deemed reliable, but no warranty or representation is made as to the accuracy thereof. This information is submitted subject to errors, omissions, change of price or terms, prior sale or lease, or withdrawal without notice. No liability of any kind is to be imposed on the broker herein.

# OFFICE SPACE FOR LEASE

15335 Morrison Street | Sherman Oaks

## SUITE 225 FLOOR PLAN



NOT TO SCALE

For more information please contact:

**Todd Wuschnig**

Principal

818.933.0301

twuschnig@lee-re.com

DRE #01367230

**Stacy Vierheilig-Fraser**

Principal

818.933.0313

svierheilig@lee-re.com

DRE #00986794



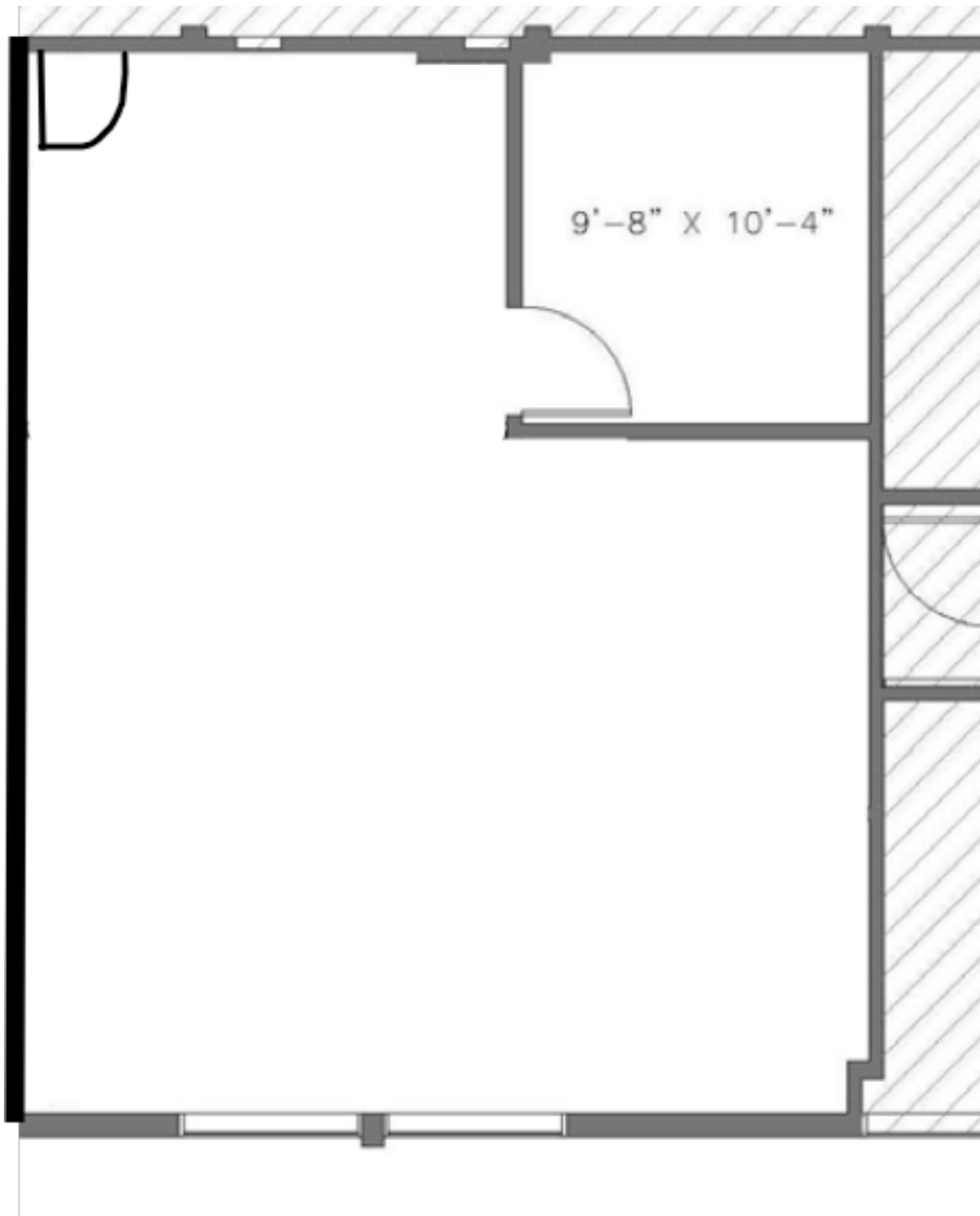
Lee & Associates® - LA North Ventura, Inc. • Corporate ID #01191898  
A Member of the Lee & Associates® Group of Companies  
15060 Ventura Blvd., Suite 100 • Sherman Oaks, CA 91403  
P:818.986.9800 F:818.933.0405 • www.leeandnorth.com

All information furnished regarding the property is from sources deemed reliable, but no warranty or representation is made as to the accuracy thereof. This information is submitted subject to errors, omissions, change of price or terms, prior sale or lease, or withdrawal without notice. No liability of any kind is to be imposed on the broker herein.

# OFFICE SPACE FOR LEASE

15335 Morrison Street | Sherman Oaks

## SUITE 237 FLOOR PLAN



NOT TO SCALE

For more information please contact:

**Todd Wuschnig**

Principal

818.933.0301

twuschnig@lee-re.com

DRE #01367230

**Stacy Vierheilig-Fraser**

Principal

818.933.0313

svierheilig@lee-re.com

DRE #00986794



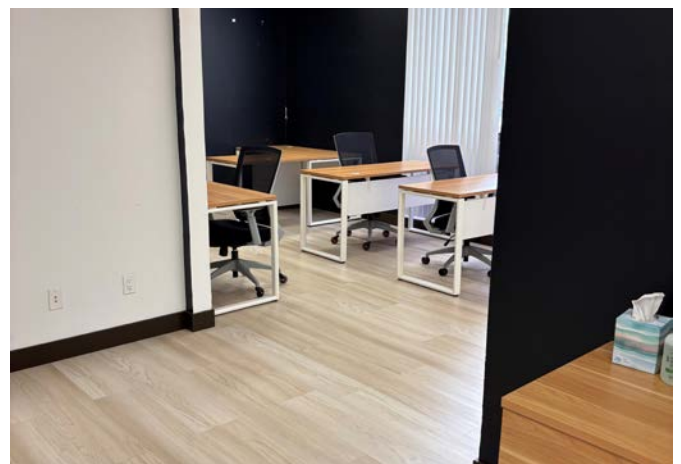
Lee & Associates® - LA North Ventura, Inc. • Corporate ID #01191898  
A Member of the Lee & Associates® Group of Companies  
15060 Ventura Blvd., Suite 100 • Sherman Oaks, CA 91403  
P:818.986.9800 F:818.933.0405 • www.leenorth.com

All information furnished regarding the property is from sources deemed reliable, but no warranty or representation is made as to the accuracy thereof. This information is submitted subject to errors, omissions, change of price or terms, prior sale or lease, or withdrawal without notice. No liability of any kind is to be imposed on the broker herein.

# OFFICE SPACE FOR LEASE

## 15335 Morrison Street | Sherman Oaks

### SUITE PHOTOS



For more information please contact:

**Todd Wuschmig**

Principal

818.933.0301

twuschmig@lee-re.com

DRE #01367230

**Stacy Vierheilig-Fraser**

Principal

818.933.0313

svierheilig@lee-re.com

DRE #00986794



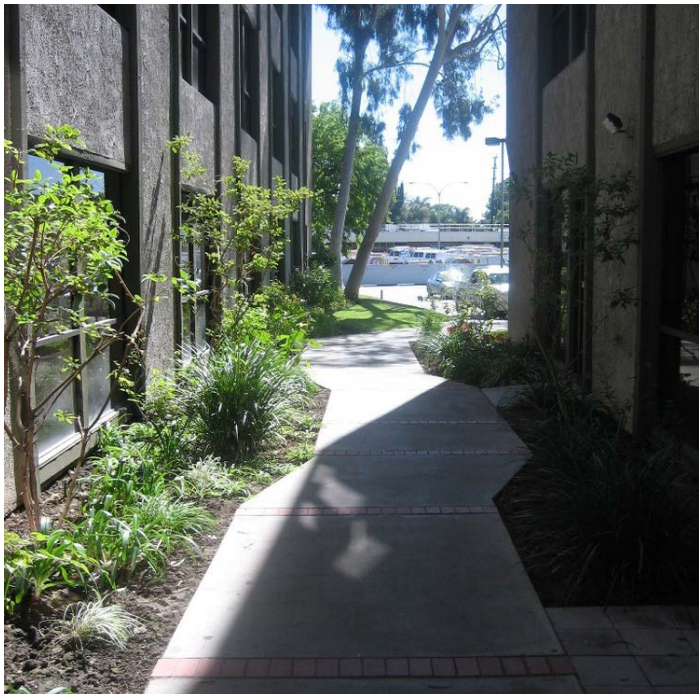
Lee & Associates® - LA North Ventura, Inc. • Corporate ID #01191898  
A Member of the Lee & Associates® Group of Companies  
15060 Ventura Blvd., Suite 100 • Sherman Oaks, CA 91403  
P:818.986.9800 F:818.933.0405 • www.leenorth.com

All information furnished regarding the property is from sources deemed reliable, but no warranty or representation is made as to the accuracy thereof. This information is submitted subject to errors, omissions, change of price or terms, prior sale or lease, or withdrawal without notice. No liability of any kind is to be imposed on the broker herein.

# OFFICE SPACE FOR LEASE

## 15335 Morrison Street | Sherman Oaks

### PROPERTY PHOTOS



For more information please contact:

**Todd Wuschnig**

Principal

818.933.0301

twuschnig@lee-re.com

DRE #01367230

**Stacy Vierheilg-Fraser**

Principal

818.933.0313

svierheilg@lee-re.com

DRE #00986794



Lee & Associates® - LA NorthVentura, Inc. • Corporate ID #01191898  
A Member of the Lee & Associates® Group of Companies  
15060 Ventura Blvd., Suite 100 • Sherman Oaks, CA 91403  
P:818.986.9800 F:818.933.0405 • www.leenorth.com

All information furnished regarding the property is from sources deemed reliable, but no warranty or representation is made as to the accuracy thereof. This information is submitted subject to errors, omissions, change of price or terms, prior sale or lease, or withdrawal without notice. No liability of any kind is to be imposed on the broker herein.

# OFFICE SPACE FOR LEASE

## 15335 Morrison Street | Sherman Oaks

### AERIAL & AMENITIES MAP



For more information please contact:

**Todd Wuschig**

Principal

818.933.0301

twuschig@lee-re.com

DRE #01367230

**Stacy Vierheilig-Fraser**

Principal

818.933.0313

svierheilig@lee-re.com

DRE #00986794



COMMERCIAL REAL ESTATE SERVICES

Lee & Associates® - LA North Ventura, Inc. • Corporate ID #01191898  
 A Member of the Lee & Associates® Group of Companies  
 15060 Ventura Blvd., Suite 100 • Sherman Oaks, CA 91403  
 P:818.986.9800 F:818.933.0405 • www.leeanorth.com

All information furnished regarding the property is from sources deemed reliable, but no warranty or representation is made as to the accuracy thereof. This information is submitted subject to errors, omissions, change of price or terms, prior sale or lease, or withdrawal without notice. No liability of any kind is to be imposed on the broker herein.