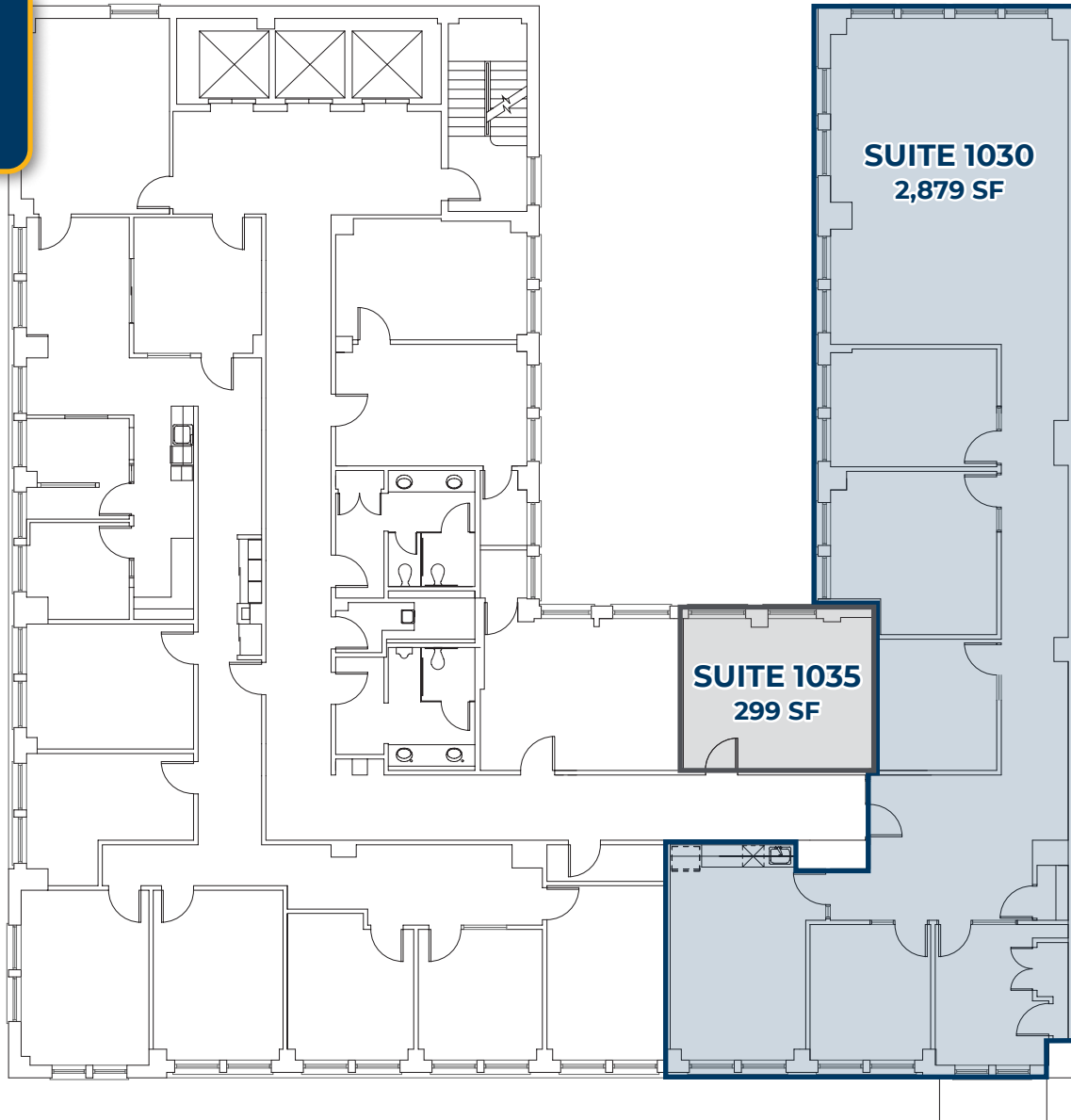




FLOOR PLAN



LEASE INFORMATION

Building	The Cascade Building
Address	520 SW 6th Ave, Portland, OR 97204
Floor	10th
Suites	1030, 1035
Total SF	299 - 2,879 RSF Combinable for 3,178 RSF

MCCOY DOERRIE, SIOR
Senior Vice President
503-523-7751
mccoy@capacitycommercial.com

JEFF FALCONER, SIOR
Principal
503-542-4346
jeff@capacitycommercial.com

GABRIEL BEHRMANN
Senior Associate Broker
971-237-2458
gabriel@capacitycommercial.com

