

FOR LEASE

500 GREGSON DRIVE

Cary, NC 27511



**CAPITAL
ASSOCIATES®**

500 GREGSON DRIVE

Cary, NC 27511

| | |
|----------------------|------------|
| PROPERTY TYPE | Office |
| BUILDING SIZE | 108,000 SF |
| LEASE TYPE | NNN |
| YEAR BUILT | 1988 |
| COUNTY | Wake |
| LOCATION | Cary, NC |
| FLOORS | 1 |



TRIPP BRADSHAW

919.749.0004 (c)

919.233.9901 (o)

tbradshaw@capitalassociates.com

capitalassociates.com

500 GREGSON DRIVE

Cary, NC 27511

ABOUT

500 Gregson is a 108,000 SF single-story, office building located on a beautiful 33-acre site in pine-shaded MacGregor Park.

Excellent call center or data center space with abundant parking. Park amenities include numerous hotels, restaurants, banks and day care centers.

This high-tech building has dual-feed power from two different primary feeders and multiple SONET rings to maximize telephone and data transmission speed and capacity. Additional land is available for build-to-suit options.



CAPITAL ASSOCIATES.

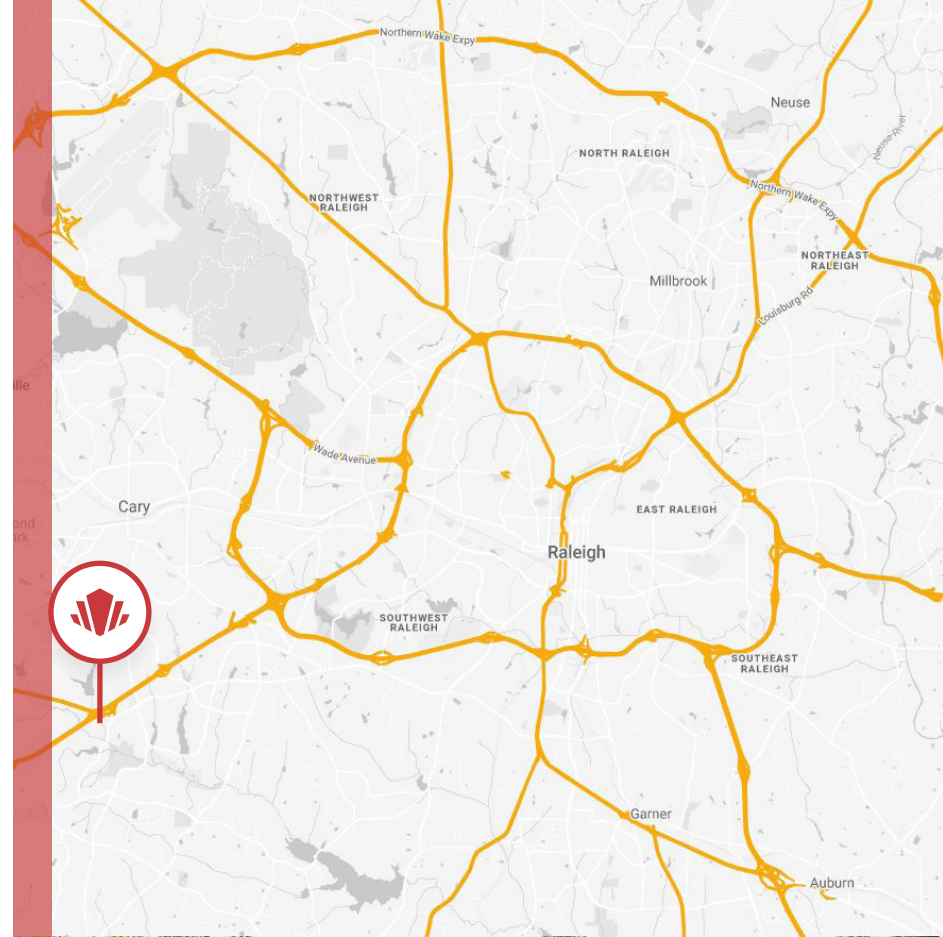
TRIPP BRADSHAW

919.749.0004 (c)

919.233.9901 (o)

tbradshaw@capitalassociates.com

capitalassociates.com



COMFORTABLE CAMPUS SETTING

500 GREGSON DRIVE

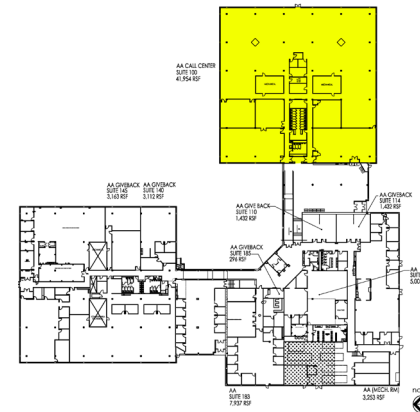
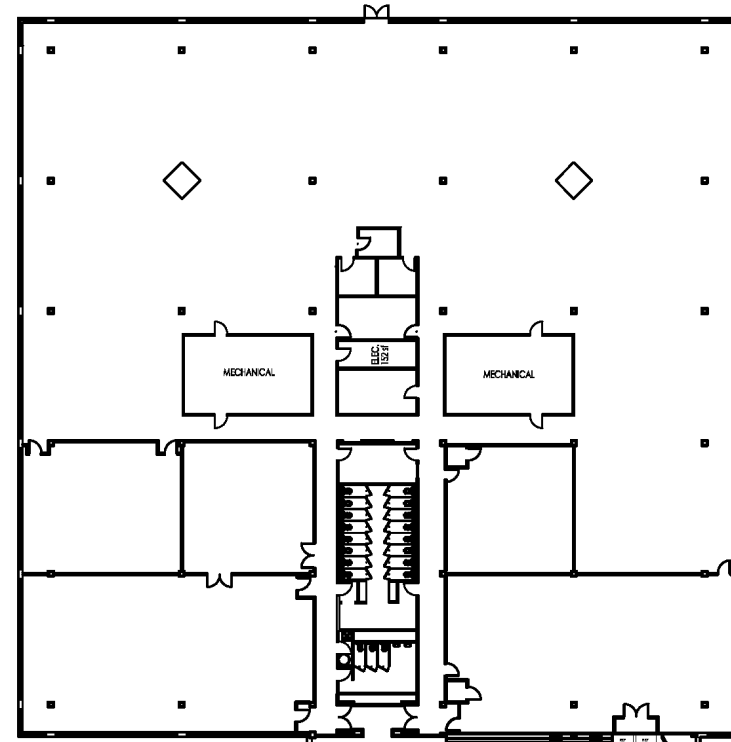
Cary, NC 27511

AVAILABLE

October 2026

First Floor
Suite 100

41,954 SF



TRIPP BRADSHAW

919.749.0004 (c)

919.233.9901 (o)

tbradshaw@capitalassociates.com

capitalassociates.com



500 GREGSON DRIVE

POINTS OF INTEREST

DINING

- Wasabi Sushi & Thai
- Taziki's Mediterranean Cafe
- Starbucks
- Chicken Salad Chick
- Chick Fil-A
- Famous Taosterty

CONVENIENCE

- Lifetime
- Harris Teeter
- Walmart
- Costco
- Whole Foods

HOTELS

- Walgreens
- First Citizens Bank
- Bank of America
- Wake Med Cary Hospital
Emergency Room
- Homewood Suites by Hilton
- Residence Inn, Marriott
- La Quinta
- Comfort Suites Regency Park
- Courtyard by Marriott

