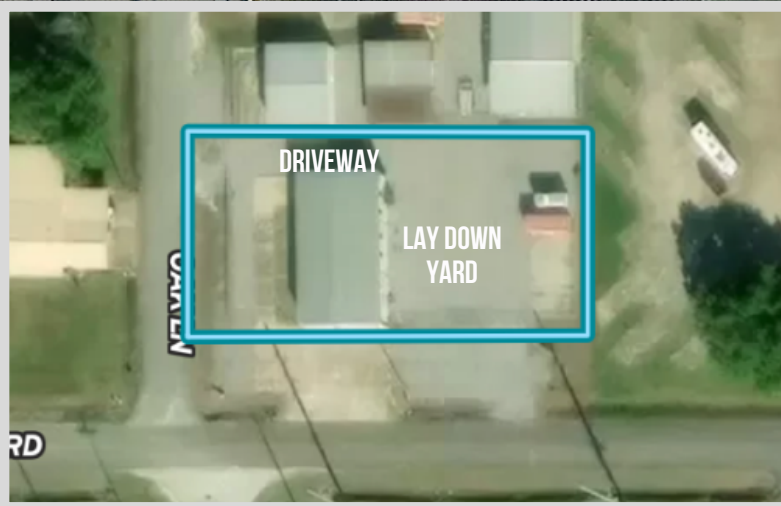


STRATEGIC INDUSTRIAL OFFICE STORAGE (IOS) OPPORTUNITY WITH OFFICE/WAREHOUSE IMPROVEMENTS

Strategically located IOS facility with ±3,200 SF of office/warehouse space, fenced laydown yard, and quick I-10 access — built for contractors, equipment operators, transportation providers, and industrial users needing secure storage and efficient regional connectivity.



**1025 RAVIA ROAD
LAKE CHARLES, LA 70605**

\$5,000/ MTH NNN

- 
BUILDING SIZE
 Approximately ±3,200
 Gross Square Feet

- 
LAND
 Situated on approximately
 ±0.76 Acres

- 
BUILDINGS
 One office/warehouse
 ±40'x75'

- 
SECURITY
 Secure outdoor storage capability

- 
PARKING
 Ample concrete parking,
 circulation areas, and laydown
 yard

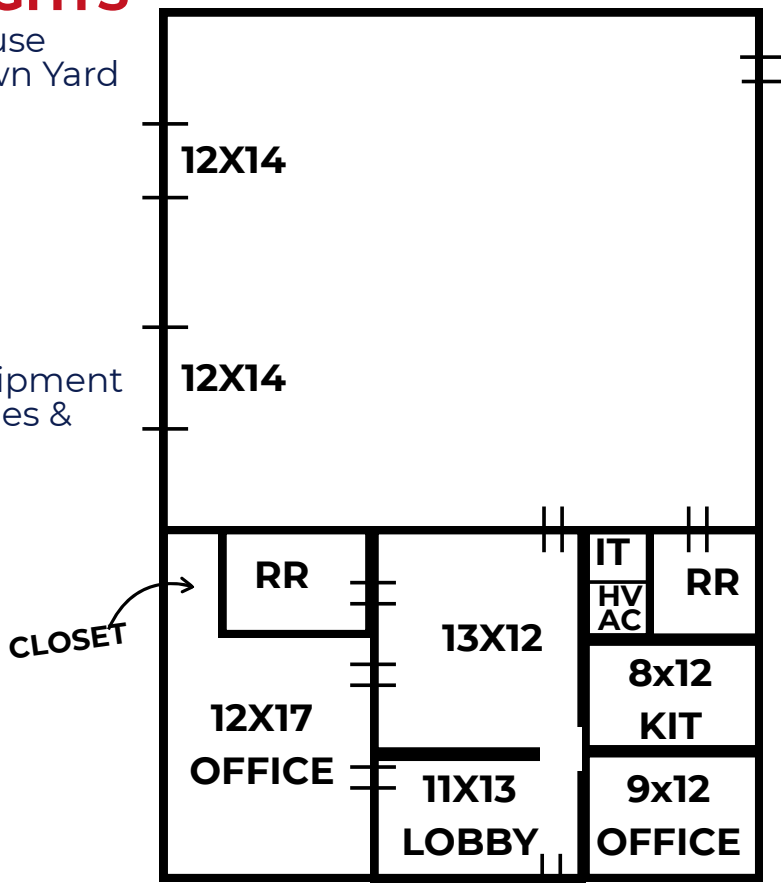
- 
CONVENIENCE
 Approximately 2 Miles to
 Interstate 10

IDEAL FOR

Corporate headquarters, training centers, emergency operations, governmental agencies, educational users, technology firms, and industrial support operations.

PROPERTY HIGHLIGHTS

- ±3,200 SF Office/Warehouse
- ±.25 Acres Fenced Laydown Yard
- Three-Phase Power
- Office with Kitchenette
- C-2 Zoning
- Flood Zone X
- Secure Outdoor Storage Capability
- Approximately 2 Miles to Interstate 10
- Ideal for Contractors, Equipment Storage, Service Companies & Industrial Users



STRATEGIC OPPORTUNITY WITH OFFICE/WAREHOUSE IMPROVMENTS

Whether your organization requires a secure operations center, professional training campus, corporate headquarters, or a highly adaptable office environment, this property offers the infrastructure and versatility to support your next mission.

FOR LEASE: \$5,000/ MTH NNN

Available for Immediate Occupancy

For More Information:
Matt Redd, CCIM, SIOR, CRE
 O: 337 310 0605 C: 337 489 9666
 mattredd@reddproperties.com



REDD PROPERTIES
 1424 Ryan Street
 Lake Charles, LA 70601
 reddproperties.com

NO WARRANTY OR REPRESENTATION, EXPRESS OR IMPLIED, IS MADE AS TO THE ACCURACY OF THE INFORMATION CONTAINED HEREIN, AND THE SAME IS SUBMITTED SUBJECT TO ERRORS, OMISSIONS, CHANGE OF PRICE, RENTAL OR OTHER CONDITIONS, PRIOR SALE, LEASE OR FINANCING, OR WITHDRAWAL WITHOUT NOTICE, AND OF ANY SPECIAL LISTING CONDITIONS IMPOSED BY OUR PRINCIPALS NO WARRANTIES OR REPRESENTATIONS ARE MADE AS TO THE CONDITION OF THE PROPERTY OR ANY HAZARDS CONTAINED THEREIN ARE ANY TO BE IMPLIED. LICENSED IN LOUISIANA.