

**50A**

**ALDERLEY ROAD**

**Wilmslow, Cheshire, SK9 1NT**



# 50A ALDERLEY ROAD

**50a Alderley Road is an impressive office building ideally situated in Wilmslow town centre, adjacent to Sainsbury's, Hoopers department store and a variety of high street shops, bars and restaurants.**

The property provides on-site car parking and also benefits from being close to the A34 bypass which runs past the town connecting to the M60 and Manchester City Centre, whilst the M6 and M56 are a short car journey away. Manchester Airport is within a 9 minute drive to Wilmslow (via the A555 Ringway Road) which offers flights to over 200 destinations worldwide. The building is a short walk from Wilmslow train station providing regular commuter services to Manchester Piccadilly as well as frequent rail services to London Euston in under 2 hours.



# FLOORPLAN

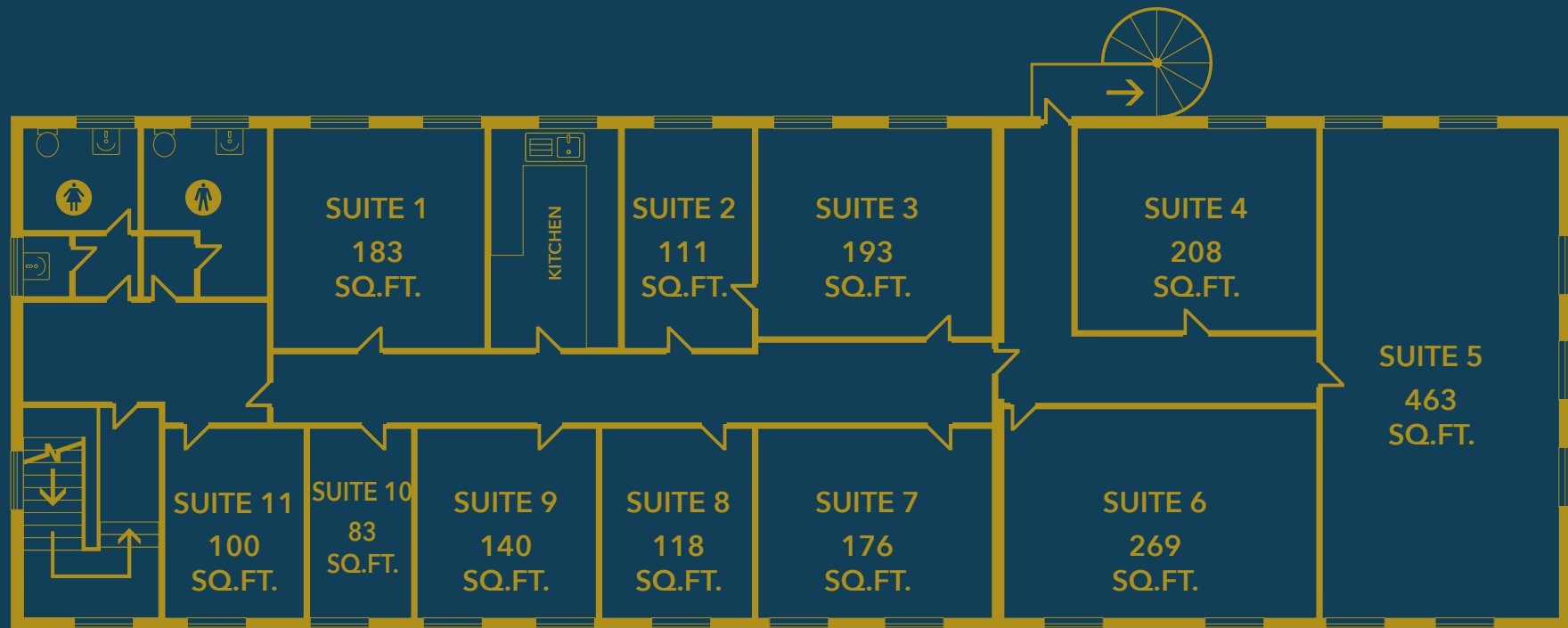
Explore a variety of office spaces in a conveniently located building near local amenities. From versatile workspaces to collaborative environments, this range of offices caters to diverse business needs.

50a Alderley Road provides a mixture of small suites starting from 83 sq. ft.

The accommodation consists of a range of first floor office suites benefiting from the following:

- Private kitchen and toilet facilities
- On-site car parking spaces
- Carpeted floors
- Suspended ceiling with LED light fittings
- Suites are offered on 12 month all-inclusive licences (cost includes; rent, rates, service charge & utilities)

SUITE	SIZE SQ.FT.	STAFF NO.
1	183	2-3
2 + 3	311	3-4
4	208	2-4
5	463	4-5
6	269	3-6
7	176	2-3
8	118	1-2
9	140	1-2
10	83	1
11	100	1-2



WILMSLOW STATION

LEISURE CENTRE

BROWNS

PICCOLINOS

POST OFFICE

M&S FOOD

TESCO EXPRESS

WATERSTONES

CIBO

COSTA COFFEE

BOOTS

SUPERDRUG

STARBUCKS

REX CINEMA

AURA BAR

HOOPERS

PLANT BLENDS

WATER LANE CAFÉ

PIZZA EXPRESS

LITTLE GREENE

STOLEN LAMB

SAINSBURY'S

JUNIPER

SMOKE

WOOD FIRE SMOKE

GAIL'S BAKERY

HOTEL CHOCOLAT



50A  
ALDERLEY ROAD

# 50A

## ALDERLEY ROAD

**Orbit**  
Developments

To arrange a viewing please call or visit

**01625 588200**

**[www.orbit-developments.co.uk](http://www.orbit-developments.co.uk)**

DISCLAIMER: These Particulars are believed to be correct at time of going to Press, but the Developer reserves the right to change the scheme in the future. However, the Vendors/Lessors and Agents of this property give notice that: (1) These Particulars are intended as a general outline only, for the guidance of prospective purchasers or tenants, and do not constitute the whole or any part of an offer or contract. (2) They cannot guarantee the accuracy of any description, dimension or other details contained in these Particulars and prospective purchasers or tenants should not rely on them as statements of fact or representation, but must satisfy themselves as to the accuracy of such details. (3) No employee of the Agents has any authority to make or give any representation or warranty, or enter into any contract whatsoever in relation to the property. Orbit Investments (Properties) Limited Co. No. 2274745. Registered in England and Wales with registered offices at Emerson House Heyes Lane Alderley Edge Cheshire SK9 7LF. (0126)