

# HAMILTON POINTE LAND

TOWNE CENTER BLVD, MAINEVILLE, OH 45039



For Sale, Ground Lease or BTS / Retail or QSR Pad

WE ARE  
THE CENTER  
OF RETAIL



# HAMILTON POINTE LAND

TOWNE CENTER BLVD, MAINEVILLE, OH 45039

## ACREAGE

0.76± Usable Acres

## SALE PRICE

Call for Details

## GROUND LEASE

Call for Details

## AREA TENANTS

NEW Kroger Marketplace, Shooters Sports Grill, Tee 18 Golf, Tire Discounters, Walgreens, & Gold Star, Chase Bank, Take 5 and more

## COMMENTS

- 0.76± Usable Acres available for sale in Maineville
- Immediately across the street from a NEW Kroger Marketplace
- Towne Center Blvd to be extended in the next year
- Development opportunity in a growing trade area
- Utilities are in the SR-48 & Town Center Blvd right-of-way
- High income trade area with \$144k average Household Incomes
- Access off of SR 48 from Towne Center Blvd - SR 48 to be widened
- Zoned B-2, General Business District
- Traffic light access to SR 48

## NEIGHBORHOOD DEMOGRAPHICS



### POPULATION

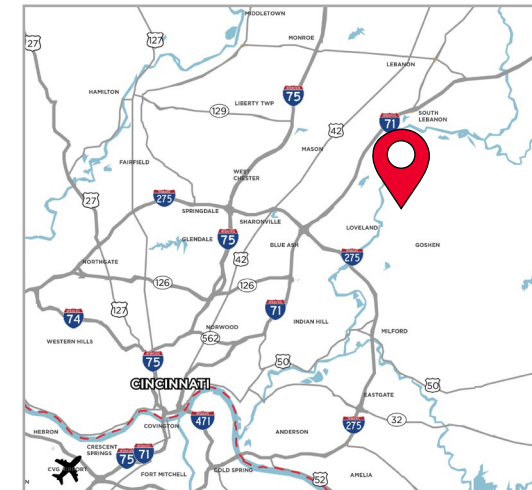


### AVERAGE HOUSEHOLD INCOME



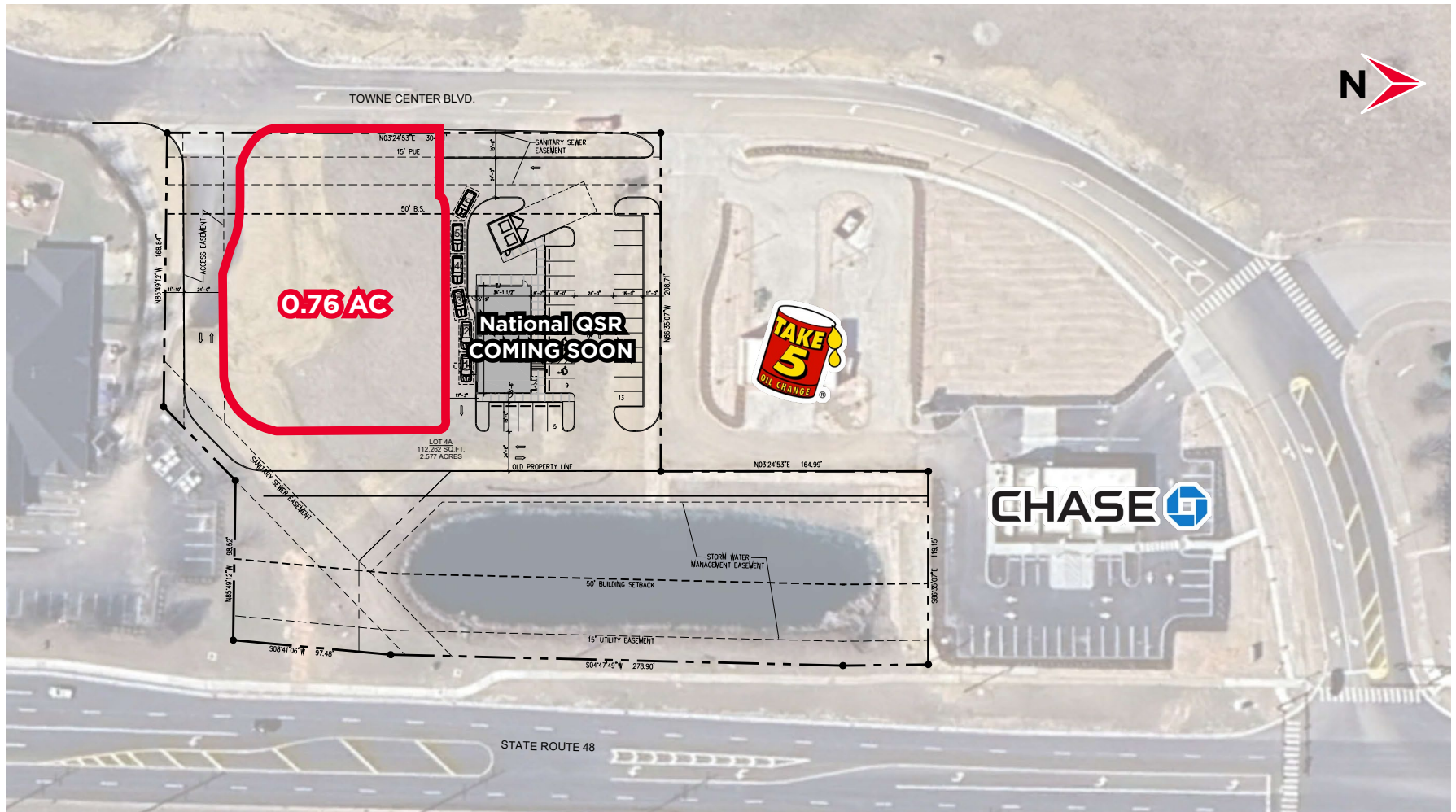
### DAYTIME POPULATION

1 Mile	6,129	\$177,123	2,607
3 Miles	35,488	\$157,044	15,521
5 Miles	78,226	\$156,741	47,886



# HAMILTON POINTE LAND

TOWNE CENTER BLVD, MAINEVILLE, OH 45039

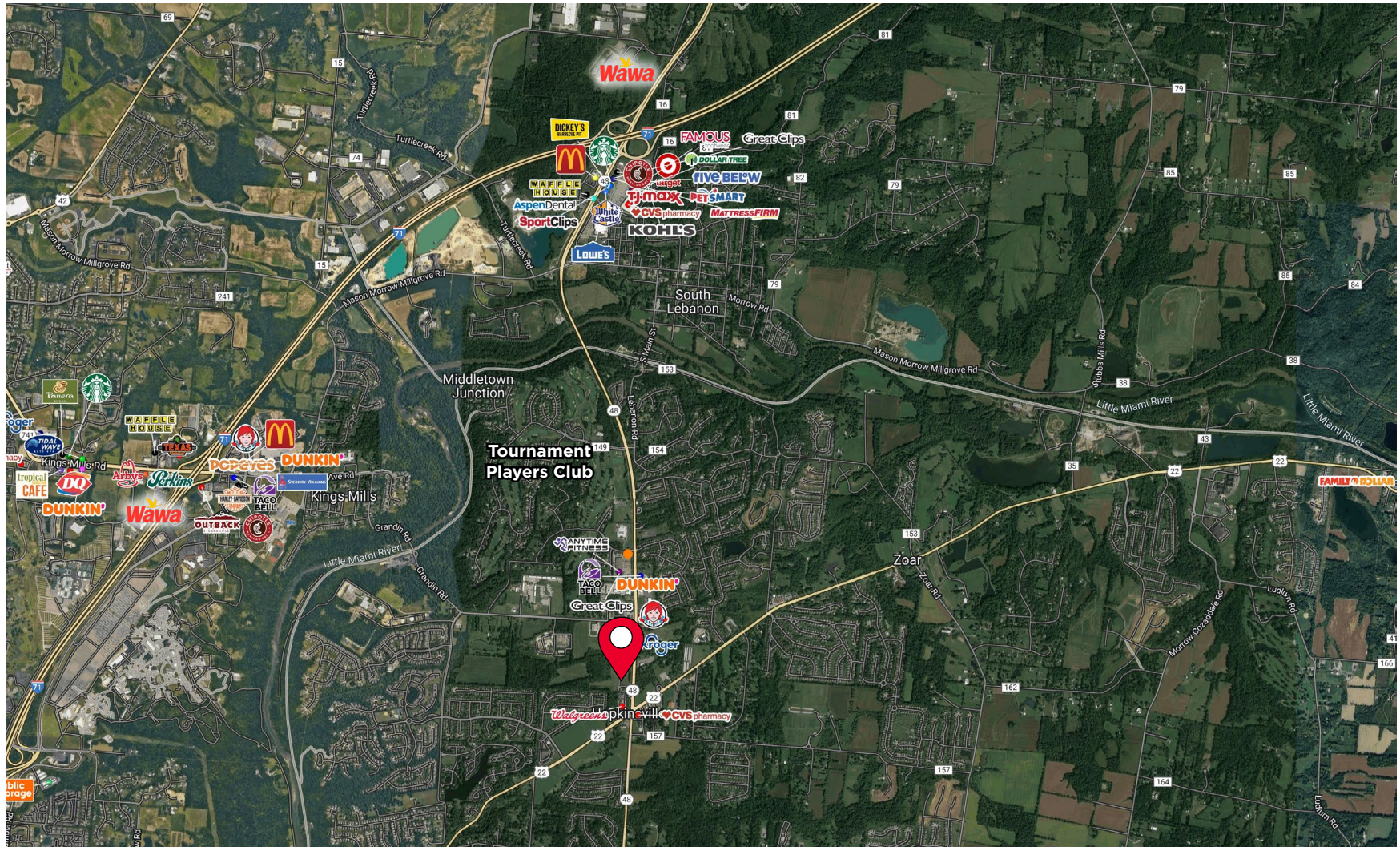


**Rob Murphy** / Director / [rob.p.murphy@cushwake.com](mailto:rob.p.murphy@cushwake.com) / +1 513 763 3033  
**Terry Ohnmeis** / Senior Director / [terry.ohnmeis@cushwake.com](mailto:terry.ohnmeis@cushwake.com) / +1 513 763 3059

Cushman & Wakefield Copyright 2024. No warranty or representation, express or implied, is made to the accuracy or completeness of the information contained herein, and same is submitted subject to errors, omissions, change of price, rental or other conditions, withdrawal without notice, and to any special listing conditions imposed by the property owner(s). As applicable, we make no representation as to the condition of the property (or properties) in question.

# HAMILTON POINTE LAND

TOWNE CENTER BLVD, MAINEVILLE, OH 45039



**Rob Murphy** / Director / [rob.p.murphy@cushwake.com](mailto:rob.p.murphy@cushwake.com) / +1 513 763 3033  
**Terry Ohnmeis** / Senior Director / [terry.ohnmeis@cushwake.com](mailto:terry.ohnmeis@cushwake.com) / +1 513 763 3059

Cushman & Wakefield Copyright 2024. No warranty or representation, express or implied, is made to the accuracy or completeness of the information contained herein, and same is submitted subject to errors, omissions, change of price, rental or other conditions, withdrawal without notice, and to any special listing conditions imposed by the property owner(s). As applicable, we make no representation as to the condition of the property (or properties) in question.