



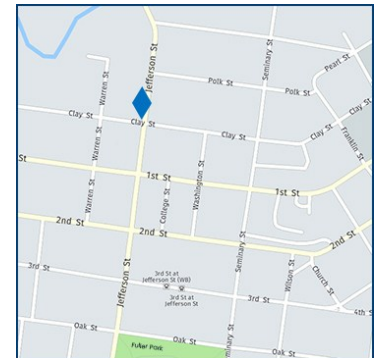
**COLDWELL BANKER  
COMMERCIAL**  
BROKERS  
OF THE VALLEY

# 1031-B Jefferson St. Napa, CA



## Office Suite for Lease

Single office on ground floor with handicapped lift access to the building, shared restrooms and a common kitchenette closet. Natural light and common entry/lobby. Two restrooms on first floor. Utilities included. Walking distance to Downtown Napa.



**±220 SF ~ \$895 per Month**



**Michael Moffett**  
License #00946472  
707.479.1976  
mmoffett@cnapavalley.com

1775 Lincoln Ave.  
Napa, CA 94558

**Cathy D'Angelo Holmes**

License #01355085  
707.304.3338  
cholmes@cnapavalley.com

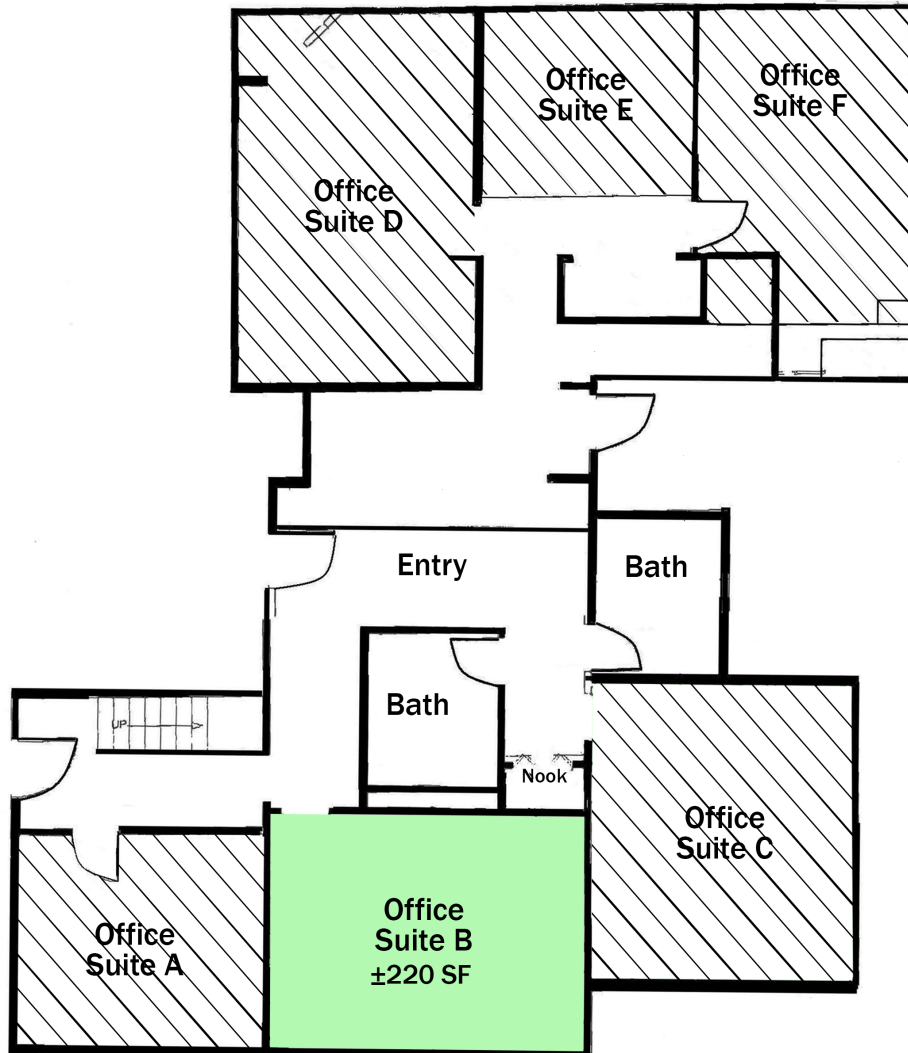




**COLDWELL BANKER  
COMMERCIAL**  
BROKERS  
OF THE VALLEY

# 1031-B Jefferson St. Napa, CA

## FLOORPLAN



**Michael Moffett**  
License #00946472  
707.479.1976  
mmoffett@cnapavalley.com

1775 Lincoln Ave.  
Napa, CA 94558

**Cathy D'Angelo Holmes**

License #01355085  
707.304.3338  
cholmes@cnapavalley.com

