

2ND GENERATION MED SPA

9407 CYPRESS LAKE DR, FORT MYERS, FL 33919

FOR SUBLEASE



Tim Schneider

Partner

239.334.3040

Tim.Schneider@TrinityCRE.com

Jacob Cairo

Associate

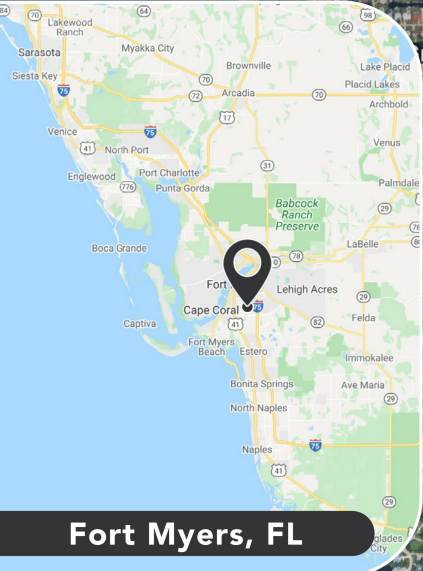
239.334.3040 x204

Jacob.Cairo@TrinityCRE.com



2ND GENERATION MED SPA

9407 CYPRESS LAKE DR, FORT MYERS, FL 33919



2026 DEMOGRAPHICS

9407 CYPRESS LAKE DR

	1 MILE	3 MILE	5 MILE	20 MIN DRIVE
AVERAGE H.H INCOME	\$109,948	\$109,380	\$111,971	\$110,981
POPULATION	9,636	62,476	148,586	235,747
EMPLOYMENT DENSITY	4,331	34,824	86,941	129,896

PROPERTY FEATURES

PRICE	\$22 PSF + \$8.02/SF NNN
AVAILABLE	2,132± SF
ZONING	CC (LCO)
LOCATION	This property is located along Cypress Lake Drive, a well-traveled corridor with strong visibility and convenient access, surrounded by a mix of residential communities, healthcare providers, and established retail.

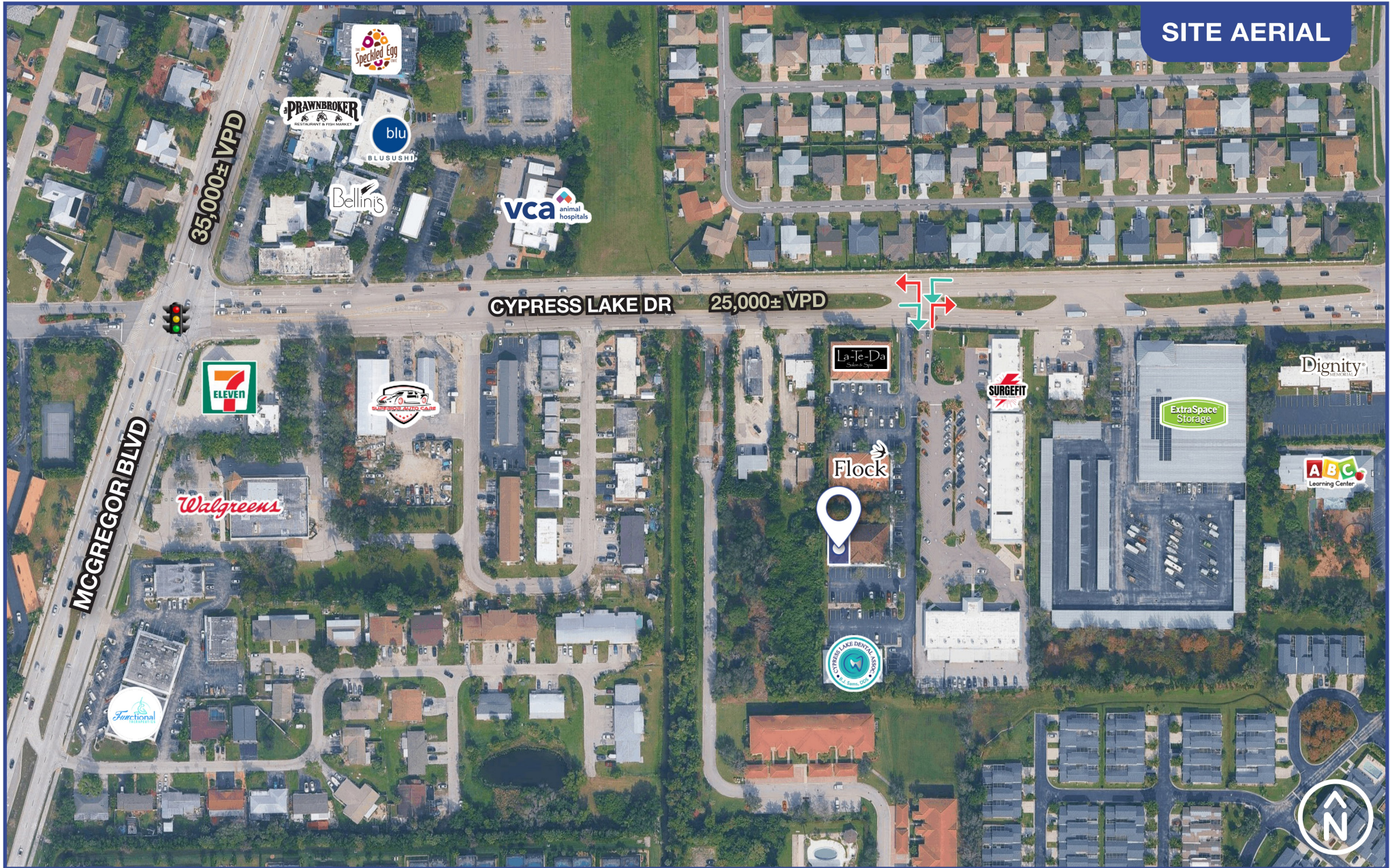


TrinityCRE.com
 9450 Corkscrew Palms Cir • Suite 101 • Estero, FL 33928
 © 2026 Trinity Commercial Group
 This information is considered accurate, but not guaranteed.



2ND GENERATION MED SPA

9407 CYPRESS LAKE DR, FORT MYERS, FL 33919



SITE AERIAL



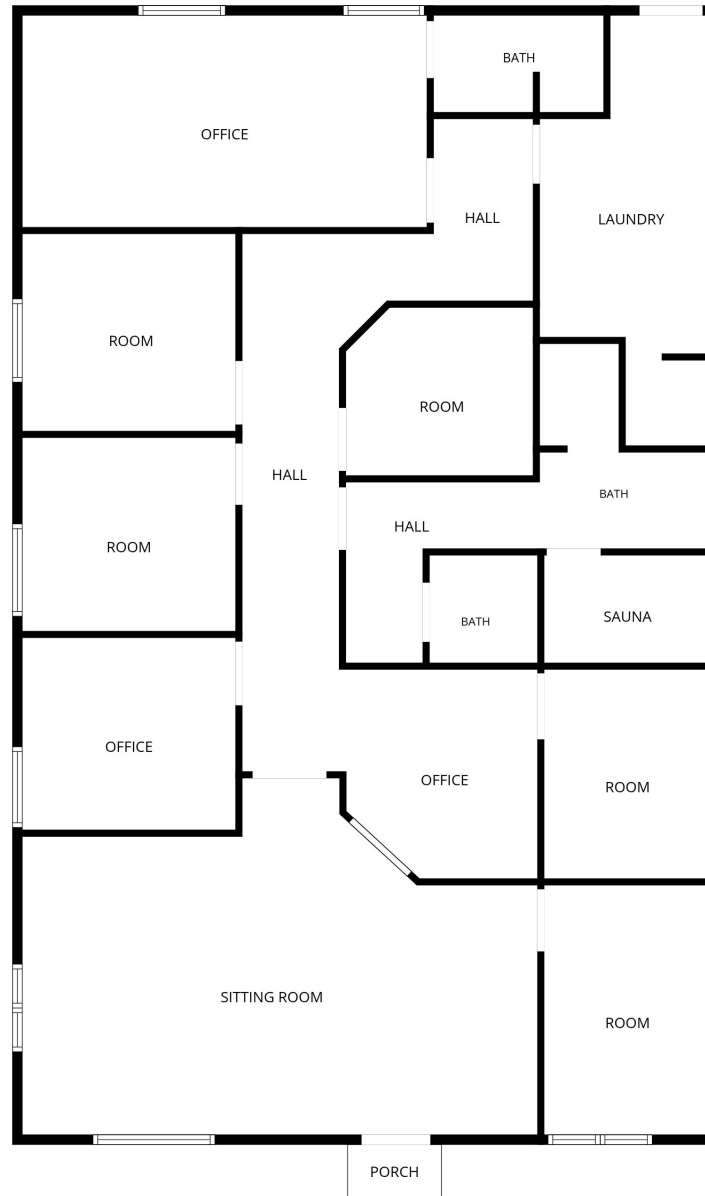
TrinityCRE.com
9450 Corkscrew Palms Cir • Suite 101 • Estero, FL 33928
© 2026 Trinity Commercial Group
This information is considered accurate, but not guaranteed.



2ND GENERATION MED SPA

9407 CYPRESS LAKE DR, FORT MYERS, FL 33919

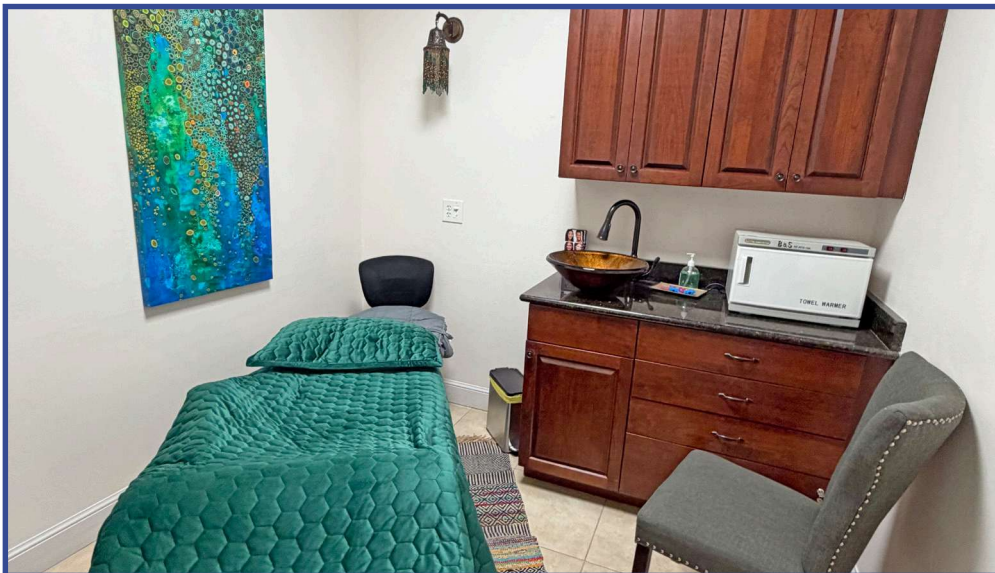
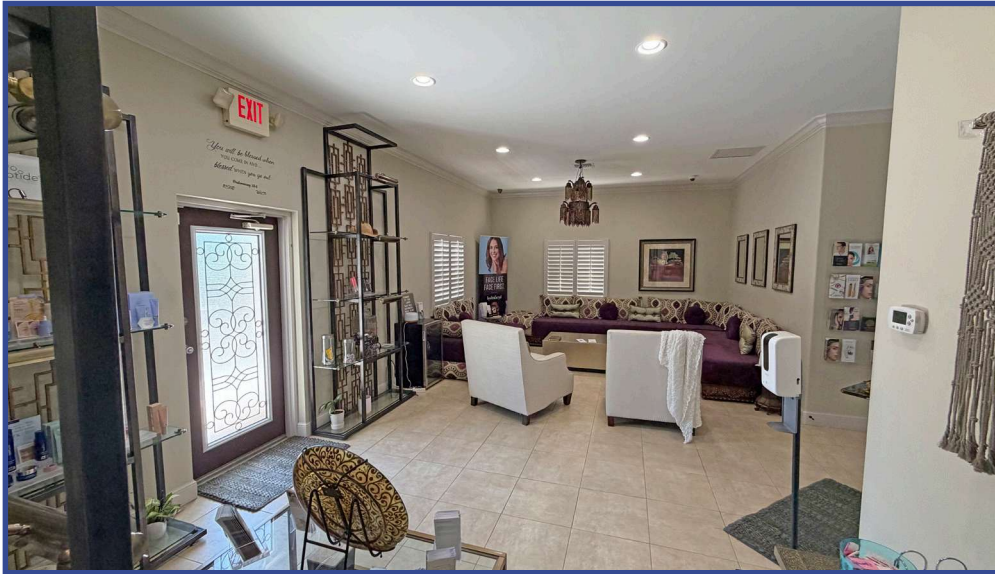
FLOOR PLAN



2ND GENERATION MED SPA

9407 CYPRESS LAKE DR, FORT MYERS, FL 33919

FURNITURE, FIXTURES, AND EQUIPMENT AVAILABLE



TrinityCRE.com

9450 Corkscrew Palms Cir • Suite 101 • Estero, FL 33928

© 2026 Trinity Commercial Group

This information is considered accurate, but not guaranteed.

