

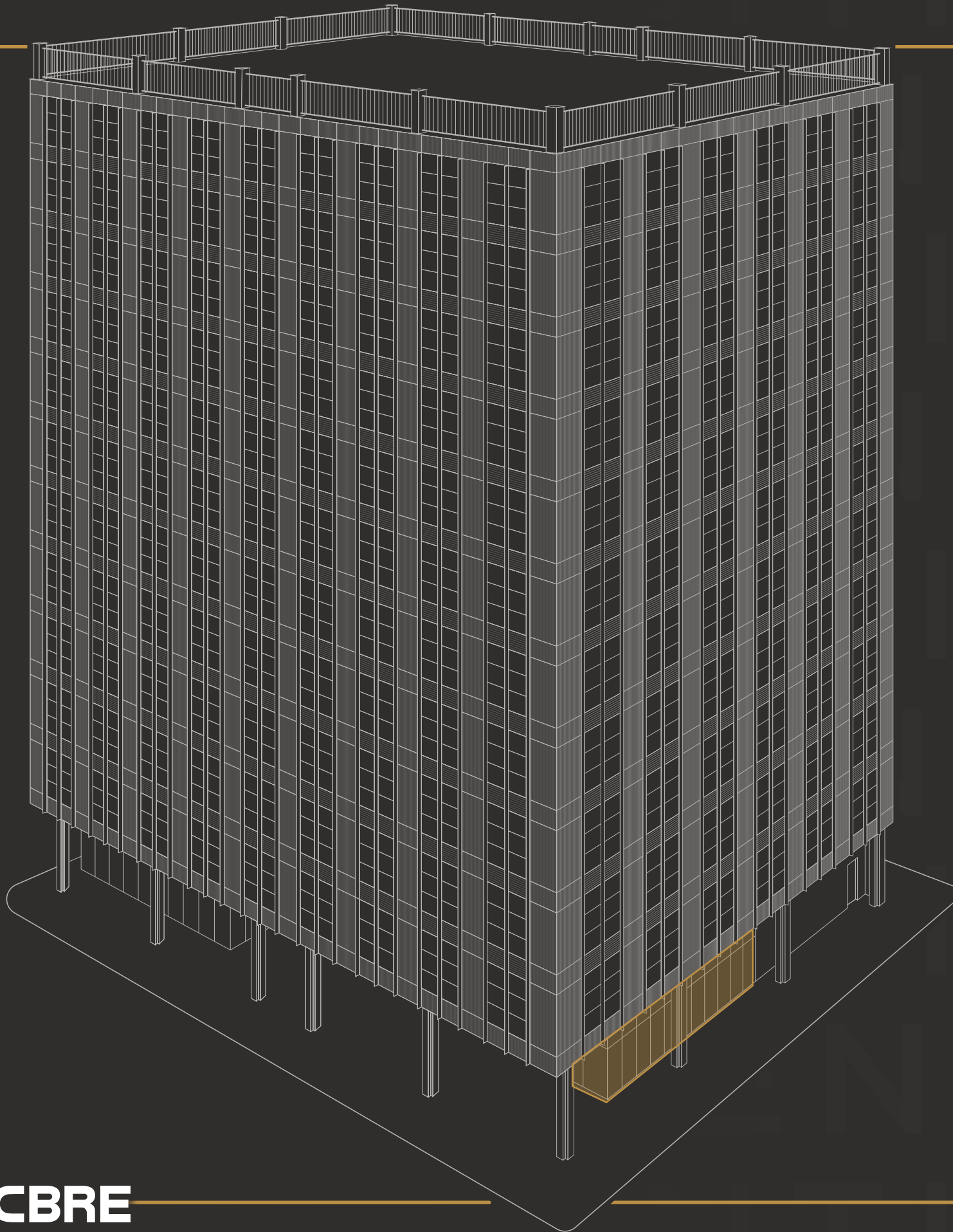
RETAIL FOR LEASE

# CITIZEN

3,971 SF | GROUND FLOOR

600 N ROBINSON AVE, OKLAHOMA CITY, OK 73102

CBRE



# Where Citizenship & Innovation Meet

Discover an unparalleled opportunity to establish your restaurant or high-end boutique in the heart of downtown Oklahoma City. Located at 600 N Robinson Ave, this **4,418 SF retail space** within Citizen offers a unique environment for businesses seeking to thrive in a vibrant, exclusive community. The open layout and dedicated patio space allows for endless design possibilities, enabling you to tailor the space to your specific needs and brand identity. Whether you envision a chic dining area, a stylish boutique, or a modern showroom, this location offers the flexibility to bring your concept to life.

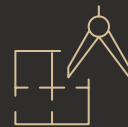
## OPPORTUNITY



**3,971 SF**  
Interior



**447 SF**  
Patio Space



Customizable  
Interior



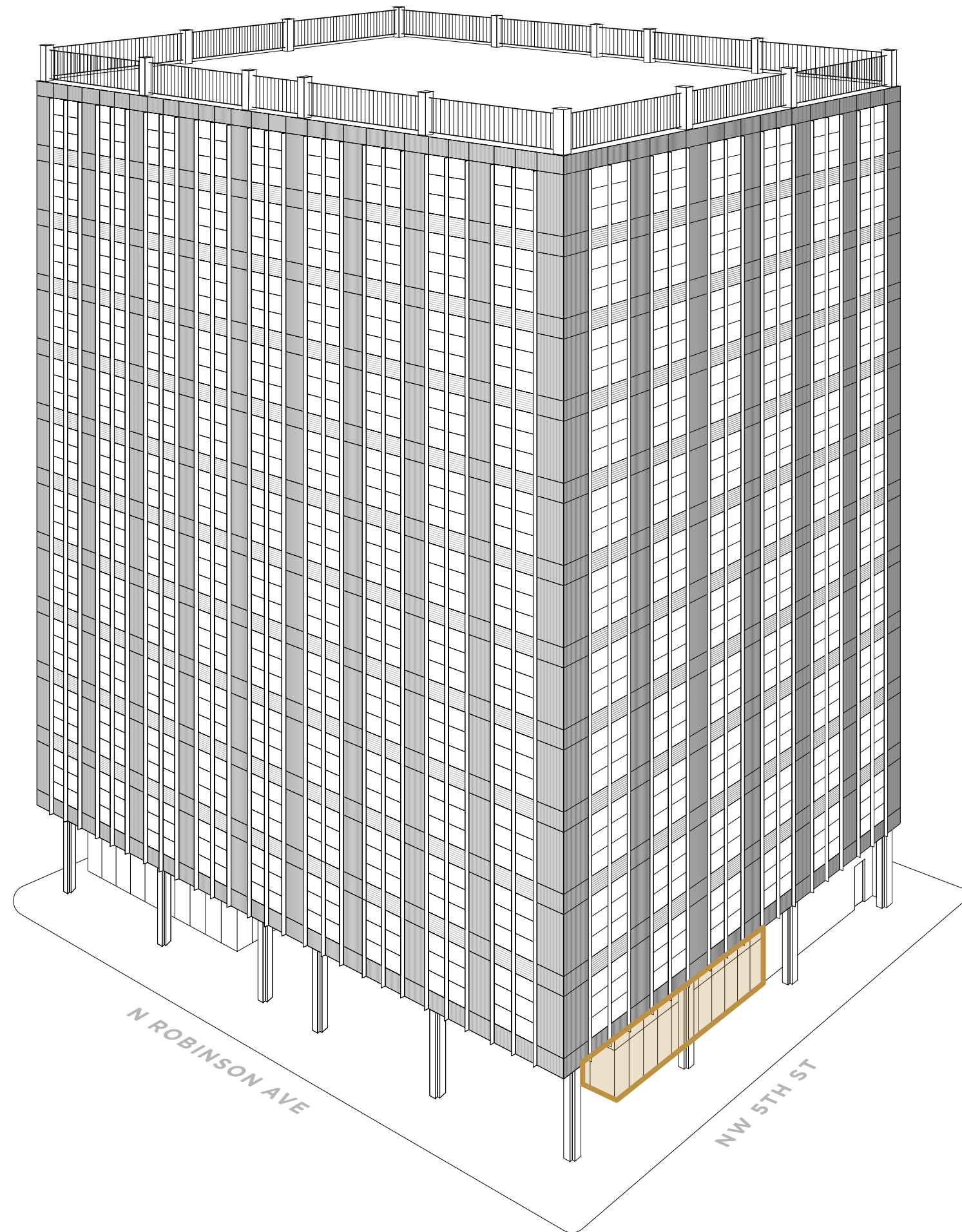
Ground level,  
Street visibility





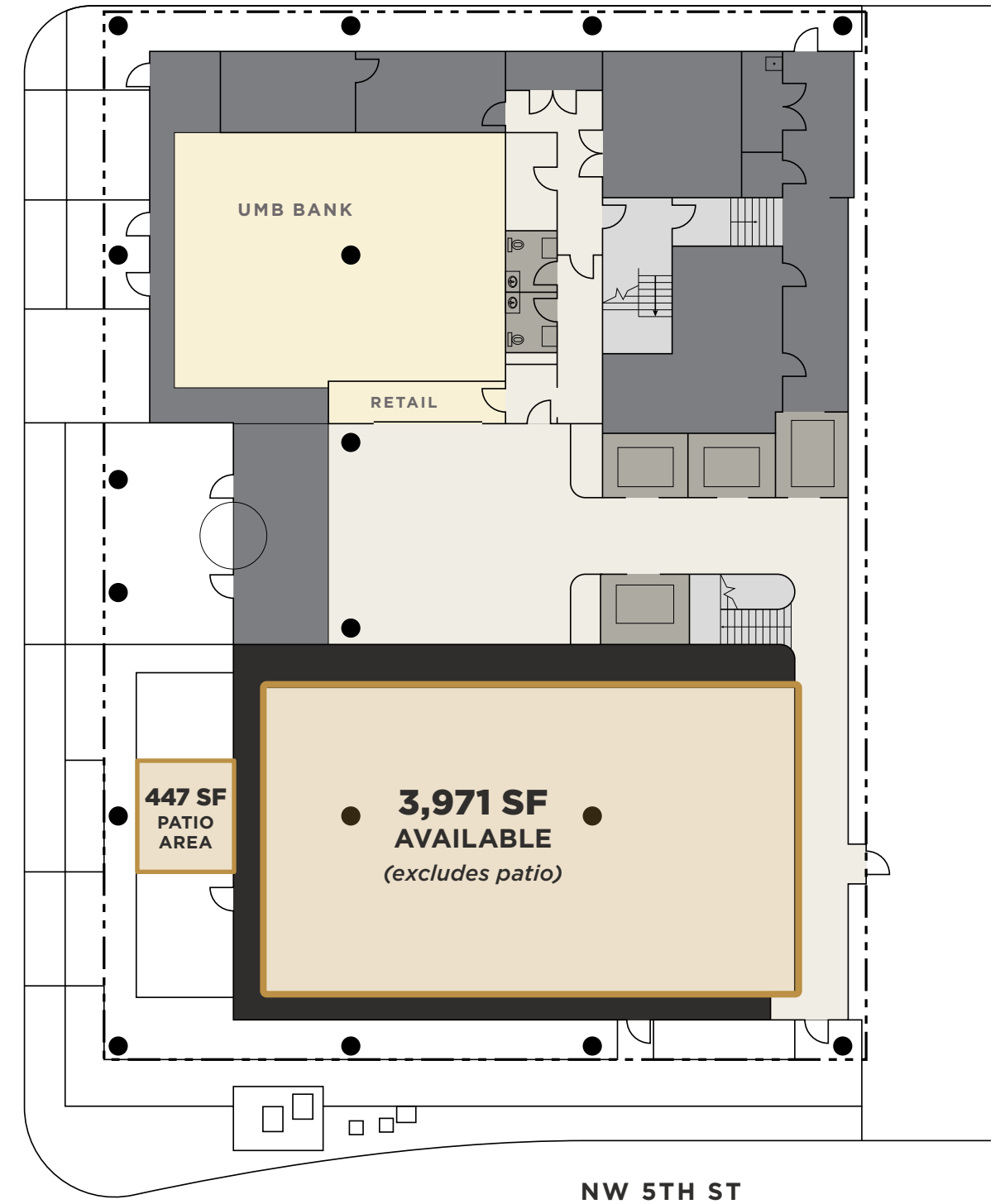
SITE PLAN

# Availabilities



N ROBINSON AVE

NW 6TH ST





## LOCATION

At just over 1.4 million residents, the Oklahoma City metropolitan area is the 20th largest and 6th fastest-growing city in the United States. Downtown OKC is seeing an urban renaissance, as multi-million dollar historical restorations and developments give the area new life. Walkability, proximity to cultural events, and access to green spaces make this an appealing area for young professionals and investors alike.



160

Restaurants

62

Retail Stores

47

Museums & Attractions

16

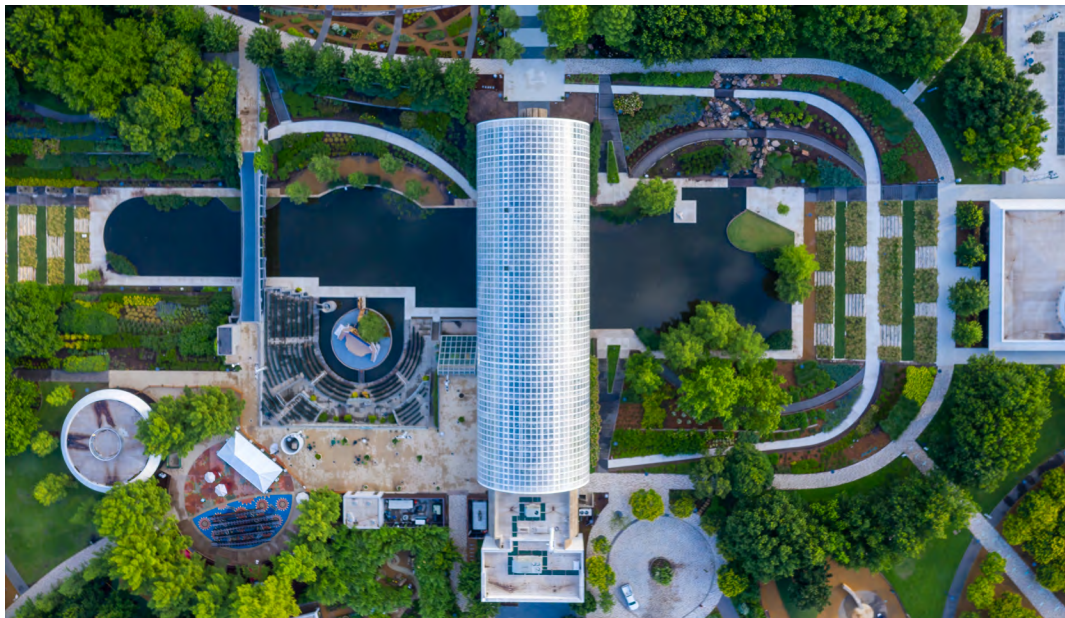
Hotels

5

Public Parks

27

Bars & Nightclubs



Oklahoma City National Memorial & Museum is the number #1 tourist attraction in Oklahoma and sits directly across the street from Citizen

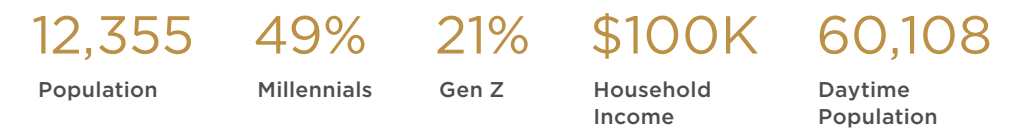
# DOWNTOWN OKC



DOWNTOWN OKC

# Demand Drivers

## Within 1 Mile



## In the Area

### ATTRACTIONS



### LUXURY HOTELS



## Annual Visitors



# Downtown Location



Oklahoma River



CHICKASAW BRICKTOWN BALLPARK

Bricktown

CITIZEN

PAYCOM CENTER

OMNI HOTEL

CONVENTION CENTER

SCISSORTAIL PARK

Business District

US COURTHOUSE

FIRST CHURCH OKC

OKLAHOMA CITY NATIONAL MEMORIAL

OKLAHOMA CITY NATIONAL MUSEUM

N Broadway Ave

N Robinson Ave

NW 4th St

NW 6th St

N Harvey Ave

# CONTACTS

## STUART GRAHAM

Senior Vice President

+1 405 607 6027

stuart.graham@cbre.com

## MARK INMAN

Senior Vice President

+1 405 607 6272

mark.inman@cbre.com

## LOGAN SADLER

Associate

+1 405 607 6361

logan.sadler@cbre.com

## WIL SCOFIELD

Associate

+1 405 607 6093

wil.scofield@cbre.com

**CBRE**

© 2025 CBRE, Inc. All rights reserved. This information has been obtained from sources believed reliable, but has not been verified for accuracy or completeness. You should conduct a careful, independent investigation of the property and verify all information. Any reliance on this information is solely at your own risk.

CBRE and the CBRE logo are service marks of CBRE, Inc. All other marks displayed on this document are the property of their respective owners. Photos herein are the property of their respective owners. Use of these images without the express written consent of the owner is prohibited.