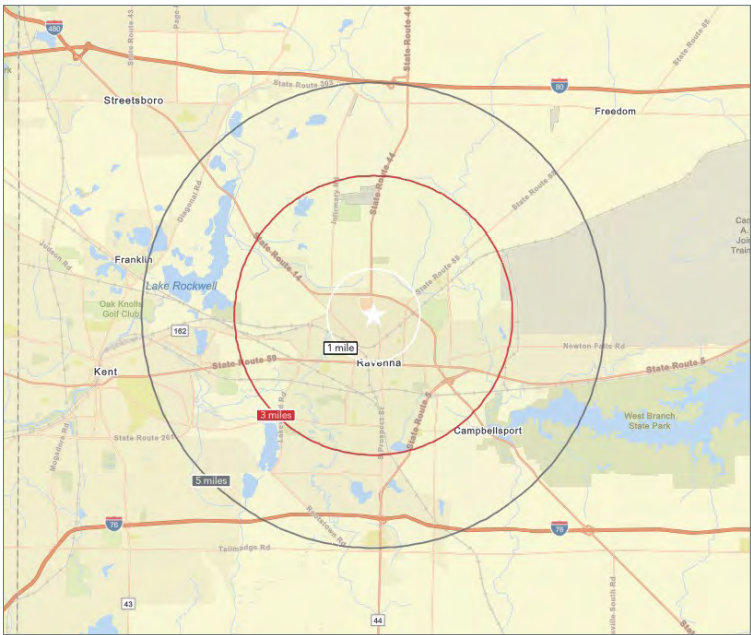
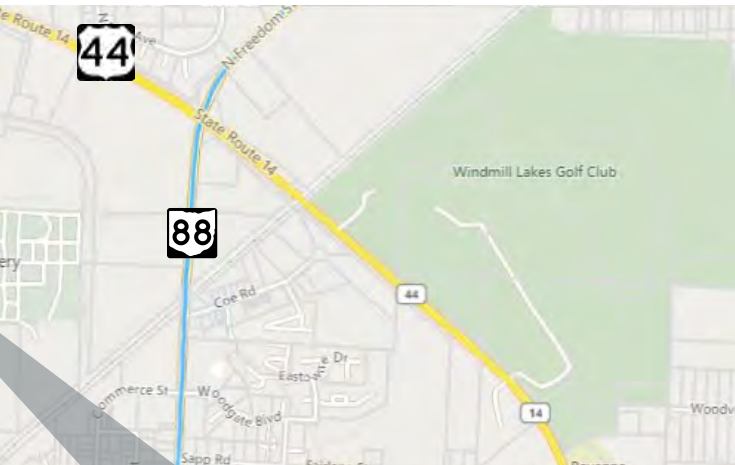
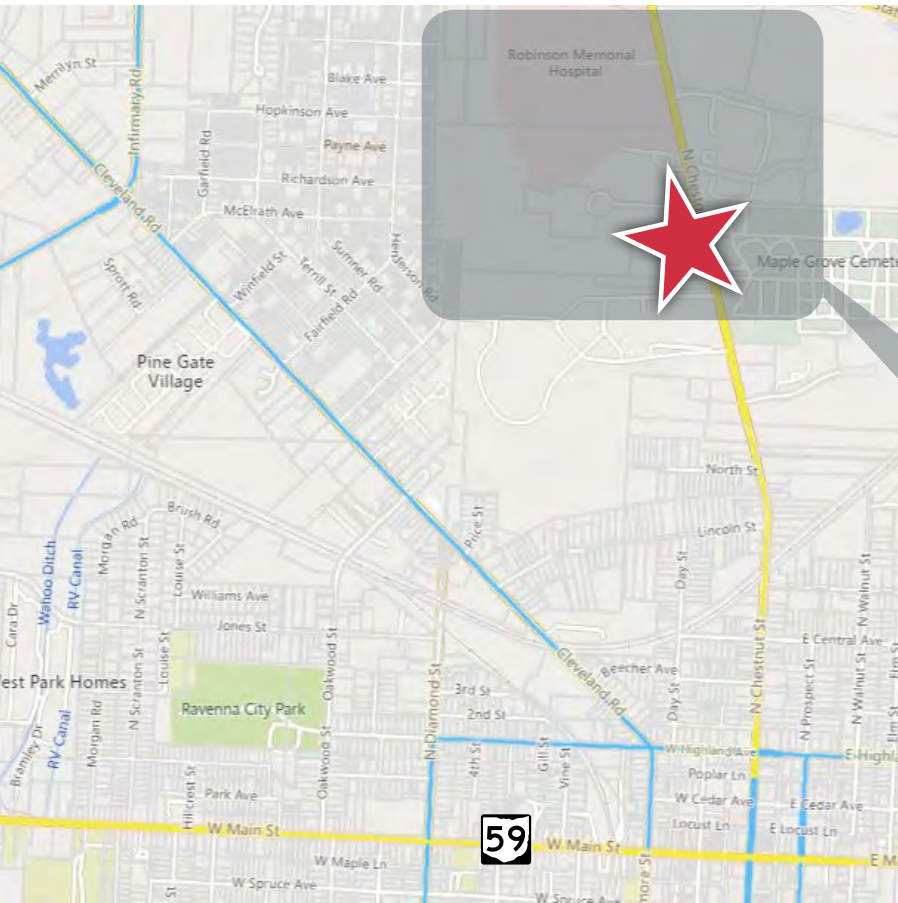


6693 N. Chestnut St.
Ravenna, OH 44266

Margaret Slesnick
330 575 7584
margaret.slesnick@naipvc.com

540 White Pond Drive | Suite A
Akron, Ohio 44320
330 535 2661
naipvc.com

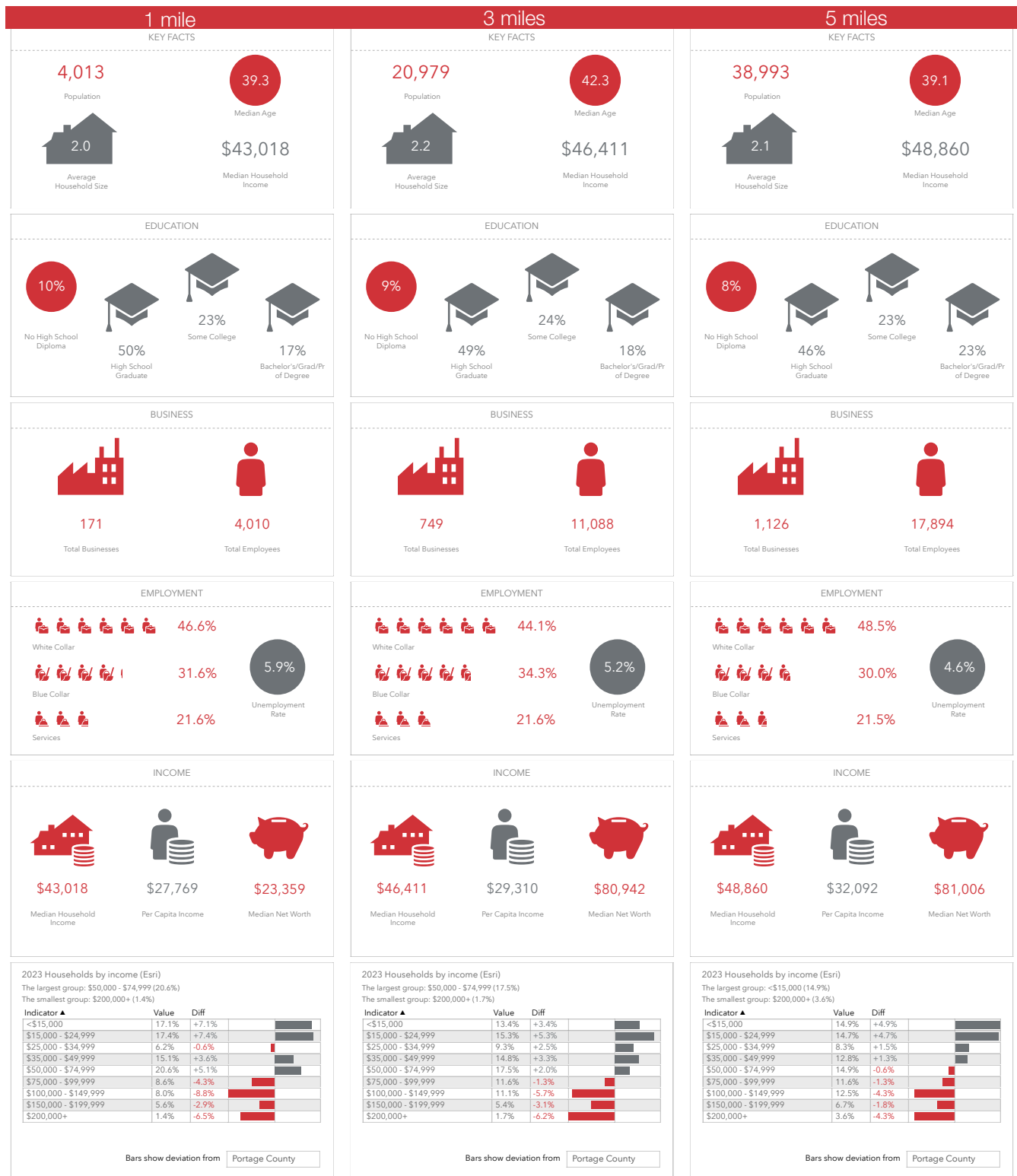


Demographics	1 Mile	3 Miles	5 Miles
Population:	4,013	20,979	38,993
Households:	1,922	9,331	17,474
Median Age:	39.3	42.3	39.1
Average HH Income:	\$68,994	\$75,890	\$57,405
Traffic Count:	8,666 VPD on N. Chestnut St. 14,592 VPD on Cleveland-East Liverpool Rd.		

6693 N. Chestnut St.
Ravenna, OH 44266

Margaret Slesnick
330 575 7584
margaret.slesnick@naipvc.com

540 White Pond Drive | Suite A
Akron, Ohio 44320
330 535 2661
naipvc.com



6693 N. Chestnut St.
Ravenna, OH 44266

Margaret Slesnick
330 575 7584
margaret.slesnick@naipvc.com

540 White Pond Drive | Suite A
Akron, Ohio 44320
330 535 2661
naipvc.com

Property Details

PROPERTY TYPE:	Medical Condo
BUILDING SIZE:	21,440 SF (3 floors)
AVAILABLE SPACE:	3,016 SF
PARCEL:	31-313-00-00-003-013
ACREAGE:	2 acres
YEAR BUILT:	1981
PARKING:	60 Spaces

Purchase Details

SALE PRICE:	ALL OFFERS CONSIDERED
TAXES:	\$2,962.64

Location Details

COUNTY:	Portage
INTERCHANGE / DISTANCE:	SR-59 / 1.1 miles SR-88 / 1.3 miles I-76 / 5 miles

Location Notes

In close proximity to University Hospitals Portage Medical Center. Close to Regency Hospital Company, Fresnius Medical Care, and Ravenna High School

Suite Features

8 offices, 2 large group/conference rooms, 2 small offices (one used as a children's playroom), large reception area, 1 interior restroom with common area restrooms directly outside the entrance to the suite, storage areas, kitchenette. (basic sketch is available - not to size)

6693 N. Chestnut St.

Ravenna, OH 44266

Margaret Slesnick

330 575 7584

margaret.slesnick@naipvc.com

540 White Pond Drive | Suite A

Akron, Ohio 44320

330 535 2661

naipvc.com