



MEDICAL OFFICE FOR SALE/LEASE

# 17722 TALBOT RD S RENTON

17722-17726 TALBOT RD S, RENTON WA

**CBRE**

# PROPERTY OVERVIEW

## DESCRIPTION

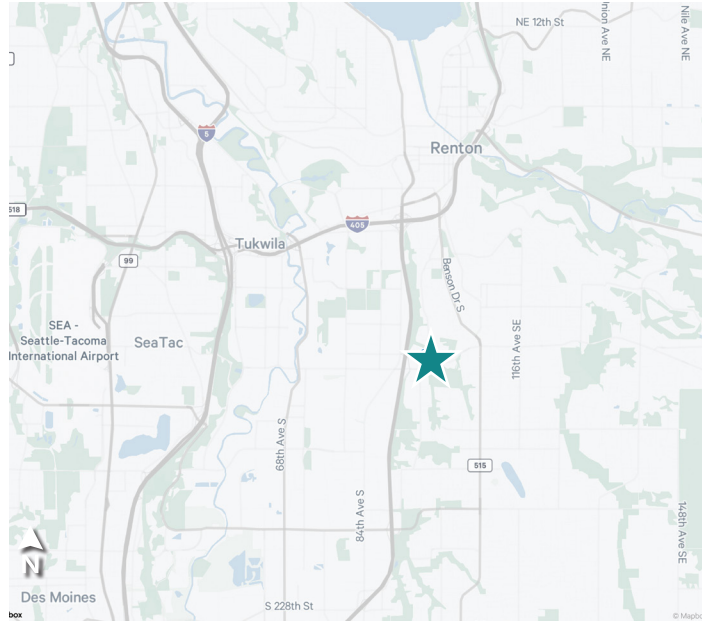
17722 is a 6,901 SF Medical Office for sale/ lease in Renton. Located directly adjacent to Valley Medical Center, the building presents a prime opportunity for a user to purchase or lease a building with direct access to a host of hospital related amenities.

Valley Medical Center, located in Renton, Washington, is the largest nonprofit healthcare provider between Seattle and Tacoma. Serving the community since 1947, it operates as part of the UW Medicine system, which enhances its offerings with strong research and teaching collaborations. Valley Medical Center includes a hospital with various specialties, including emergency care, childbirth services, heart and vascular care, and orthopedics. It also runs a network of primary and urgent care clinics throughout the region, aiming to provide comprehensive and accessible healthcare services to its community.

## HIGHLIGHTS

- **Adjacent to UW Medicine’s Valley Medical Center**
- **Heavy Medical Buildout- space is move in ready for a variety of medical users**
- **34 Parking Stalls**
- **Easy Access to Seattle via I-5**

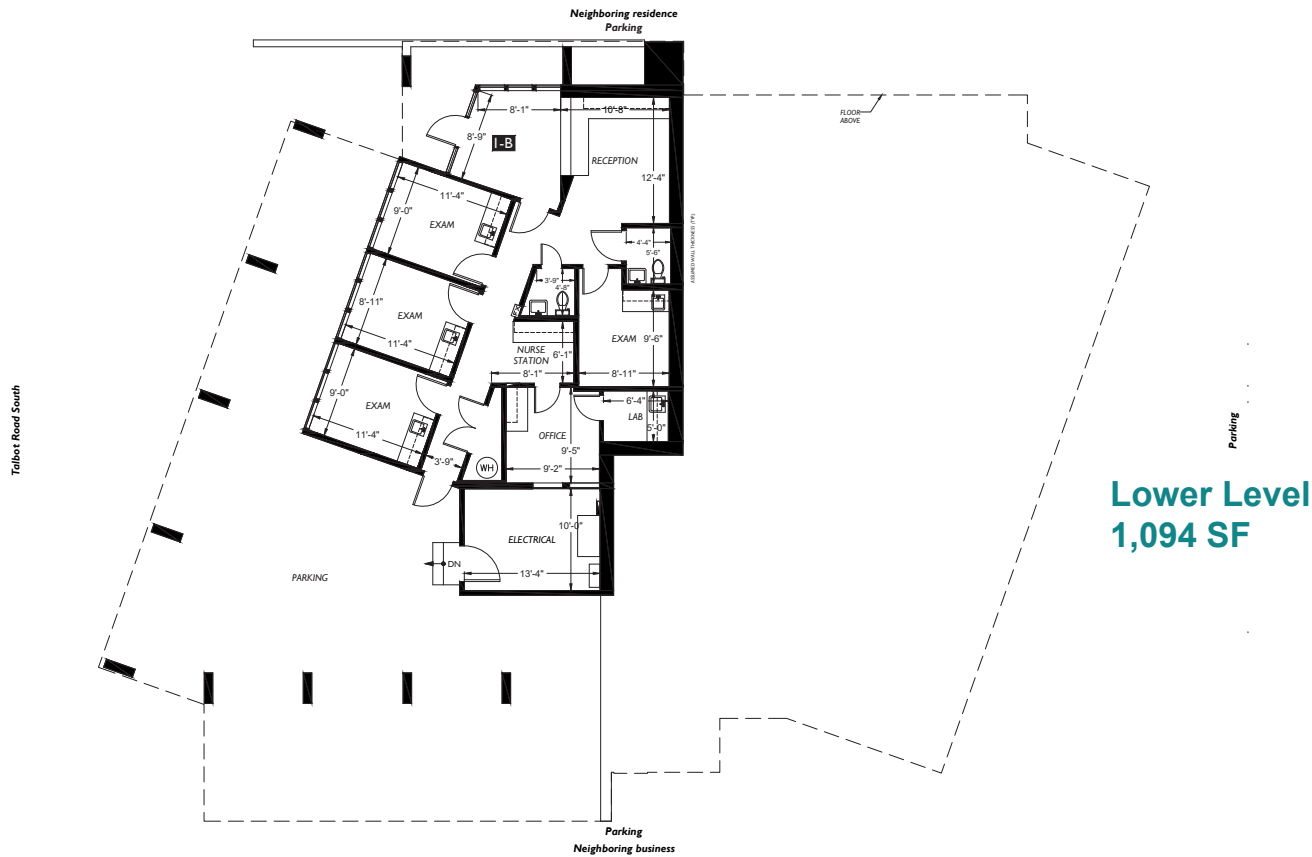
**Sale Price:** \$2,150,000  
**Lease Rate:** \$19.80 PSF NNN  
**Address:** 17722-17726 Talbot Rd S  
 Renton WA 98055  
**Building SF:** 6,901  
**Lot Size:** 0.52 AC  
**Zoning:** CO (Commercial Office)



2022 DEMOGRAPHICS	1 MILE	3 MILES	5 MILES
BUSINESSES	724	5,152	9,546
EMPLOYEES	13,486	84,251	158,039
POPULATION	12,588	87,740	295,355
HOUSEHOLDS	4,993	32,988	108,599
AVERAGE HOUSEHOLD INCOME	\$116,908	\$120,300	\$118,037
DAYTIME POPULATION	22,414	134,900	327,395

Source: CBRE Fast Report/Esri 2023

# FLOOR PLANS





MEDICAL OFFICE FOR SALE/LEASE  
17722 TALBOT RD S  
RENTON

17722-17726 TALBOT RD S, RENTON WA

CONTACT US

**RYAN BRUNETTE**

Associate  
+1 206 794 9199  
ryan.brunette@cbre.com

**STEVE BRUNETTE**

Senior Vice President  
+1 206 595 0124  
steve.brunette@cbre.com

**CBRE, INC.**

1420 5th Avenue  
Suite 3800  
Seattle, WA 98101

**CBRE**