

OFFICE FOR LEASE: 591 – 1,859 SF



1038 Leigh Ave.
San Jose, CA



THE PROPERTY

- A multi-tenant office building in the heart of San Jose

PROPERTY HIGHLIGHTS

- Suite 101A – 1,859 SF
- Suite 101B – 1,395 SF
- Suite 202 - 660 SF
- Suite 208 – 591 SF
- Common Area Kitchenette & Conference Room
- Fruitdale & Bascom Station .05 Miles
- Near Willow Glen and Campbell Amenities
- \$2.25 Modified Full Service
- Tenant Pays Janitorial & Connectivity

WILL LONGO

408-529-8110
DRE 02126991
wlongo@globalcommercialprop.com

ALEX CARUSO

408-464-8388
DRE #02136271
acaruso@globalcommercialprop.com



OFFICE FOR LEASE: 591 – 1,859 SF

GLOBAL
COMMERCIAL

1038 Leigh Ave.
San Jose, CA



WILL LONGO

408-529-8110

DRE 02126991

wlongo@globalcommercialprop.com

ALEX CARUSO

408-464-8388

DRE #02136271

acaruso@globalcommercialprop.com

OFFICE FOR LEASE: 591 – 1,859 SF

GLOBAL
COMMERCIAL

1038 Leigh Ave.
San Jose, CA

Suite 101A
1,859 SF



WILL LONGO

408-529-8110
DRE 02126991
wlongo@globalcommercialprop.com

ALEX CARUSO

408-464-8388
DRE #02136271
acaruso@globalcommercialprop.com

OFFICE FOR LEASE: 591 – 1,859 SF

GLOBAL
COMMERCIAL

1038 Leigh Ave.
San Jose, CA



Suite 101B
1,395 SF



WILL LONGO

408-529-8110
DRE 02126991
wlongo@globalcommercialprop.com

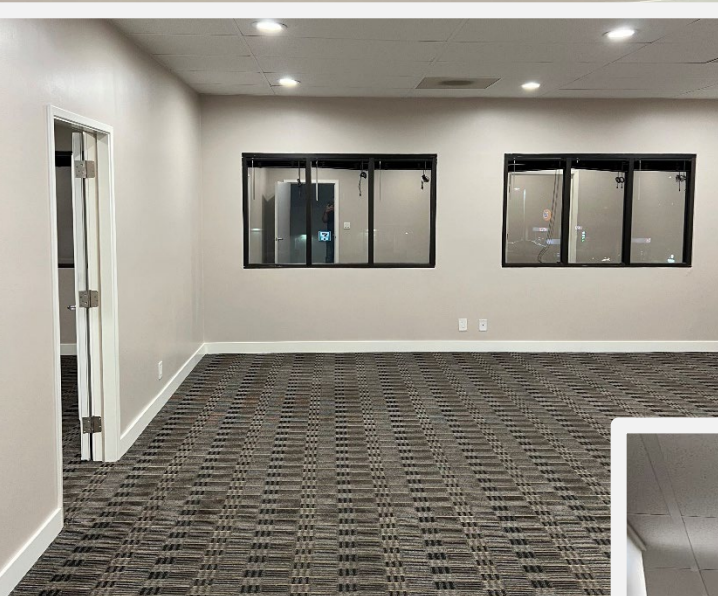
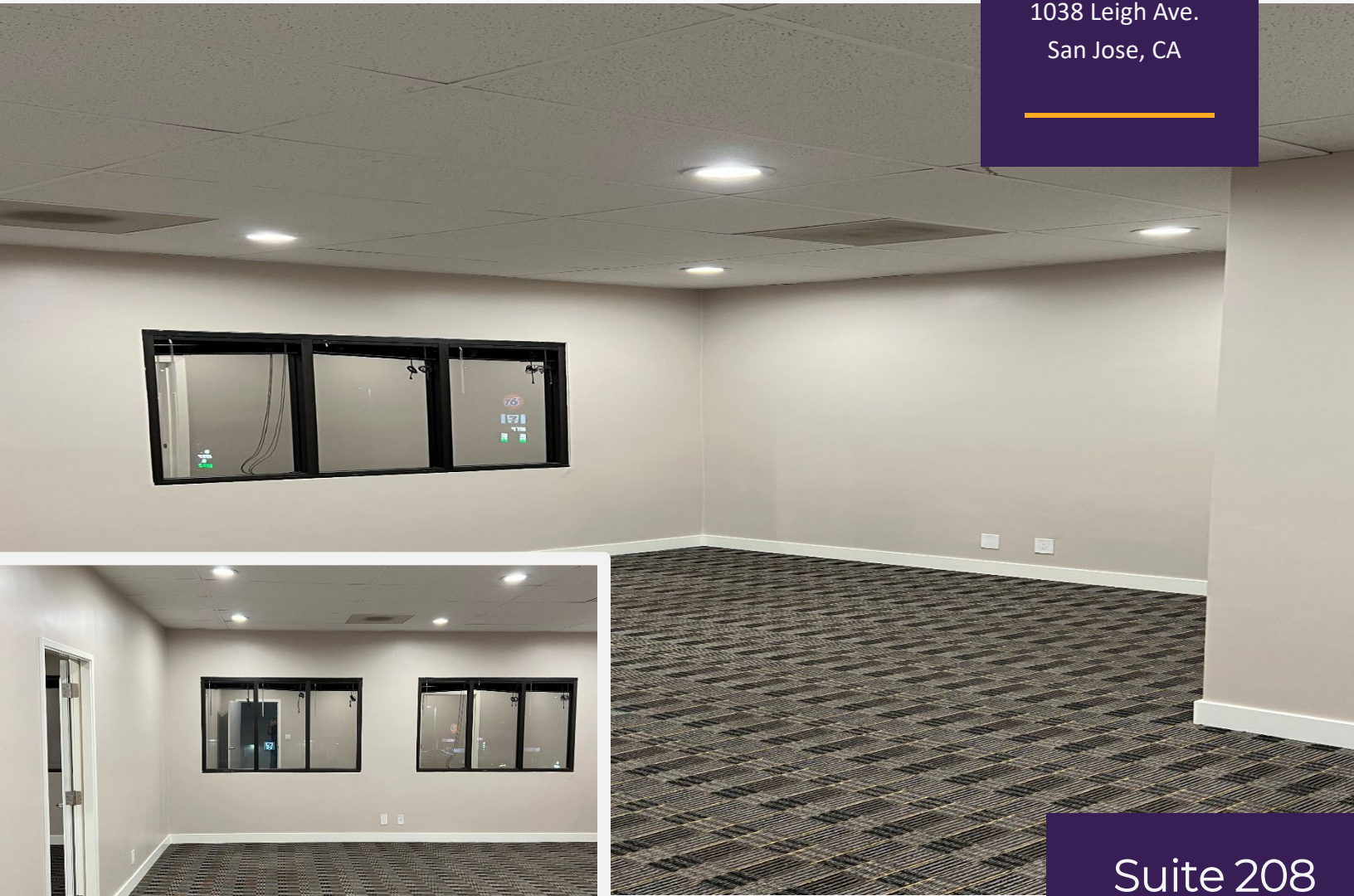
ALEX CARUSO

408-464-8388
DRE #02136271
acaruso@globalcommercialprop.com

OFFICE FOR LEASE: 591 – 1,859 SF

GLOBAL
COMMERCIAL

1038 Leigh Ave.
San Jose, CA



Suite 208
591 SF

WILL LONGO

408-529-8110

DRE 02126991

wlongo@globalcommercialprop.com

ALEX CARUSO

408-464-8388

DRE #02136271

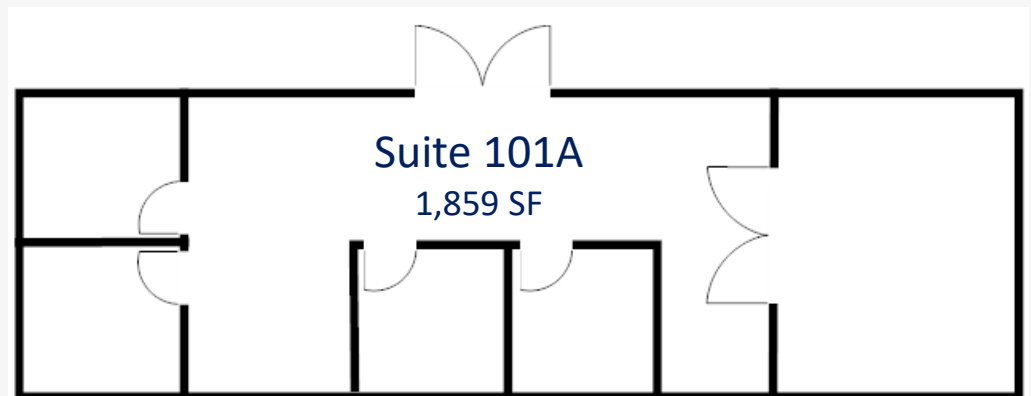
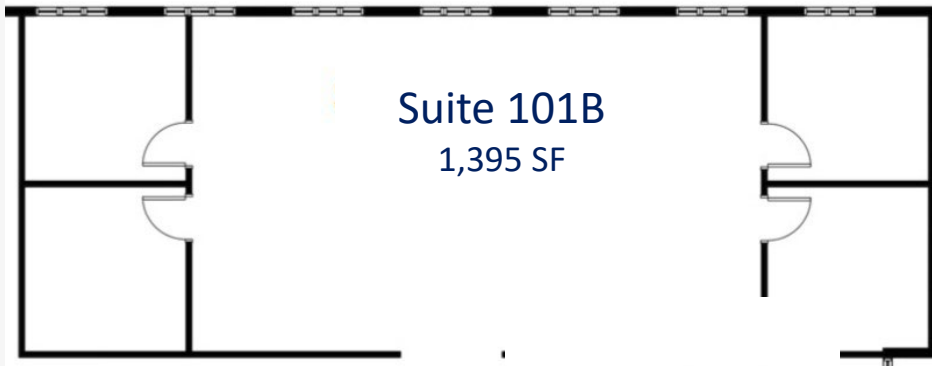
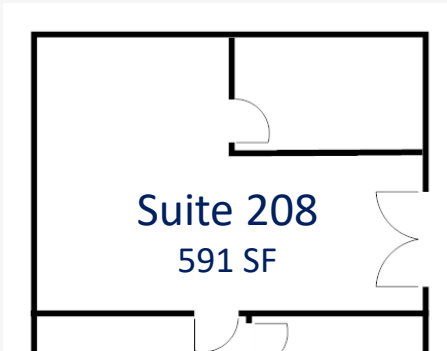
acaruso@globalcommercialprop.com



OFFICE FOR LEASE: 591 – 1,859 SF

GLOBAL
COMMERCIAL

1038 Leigh Ave.
San Jose, CA



WILL LONGO

408-529-8110

DRE 02126991

wlongo@globalcommercialprop.com

ALEX CARUSO

408-464-8388

DRE #02136271

acaruso@globalcommercialprop.com