



# VALUE INDUSTRIAL PARTNERS, LLC

Industrial Real Estate Investment, Brokerage and Management

477 W. Wrightwood Avenue, Elmhurst, Illinois 60126 TEL: 630-333-1900 FAX: 630-333-1910



## 750-752 Industrial Drive Elmhurst Illinois

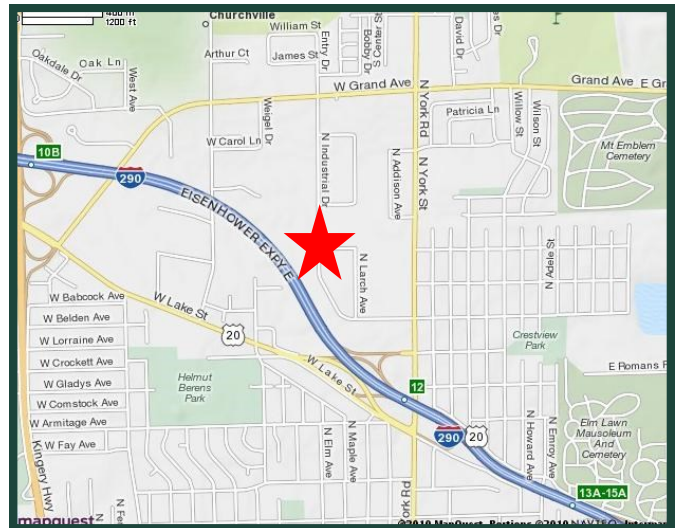
## FOR LEASE 10,800 SF

### Building Specifications

Available Size:	10,800 Square Feet
Building Size:	80,180 Square Feet
Office:	2,300 Square Feet (Can Be Reduced)
Ceiling Height:	15'4" Clear
Loading:	2 Interior Docks
Parking:	Ample
Heat:	Gas Unit Heaters
Sprinklers:	Yes
Real Estate Taxes:	Included with Current Stop
Operating Expenses:	Included with Current Stop

### Comments

- Professionally owned and managed.
- One minute to I-290 / York Road Interchange.



**For Further Information, Please Contact:**

**Brian P. Gedvilas, Director of Leasing**  
bgedvilas@valueindustrialpartners.com

**Brian M. Liston, Principal**  
bliston@valueindustrialpartners.com

**TEL: 630-333-1900 FAX: 630-333-1910**

.....wnership interest in this property.  
Submitted subject to error, change in status, or withdrawal without notice.

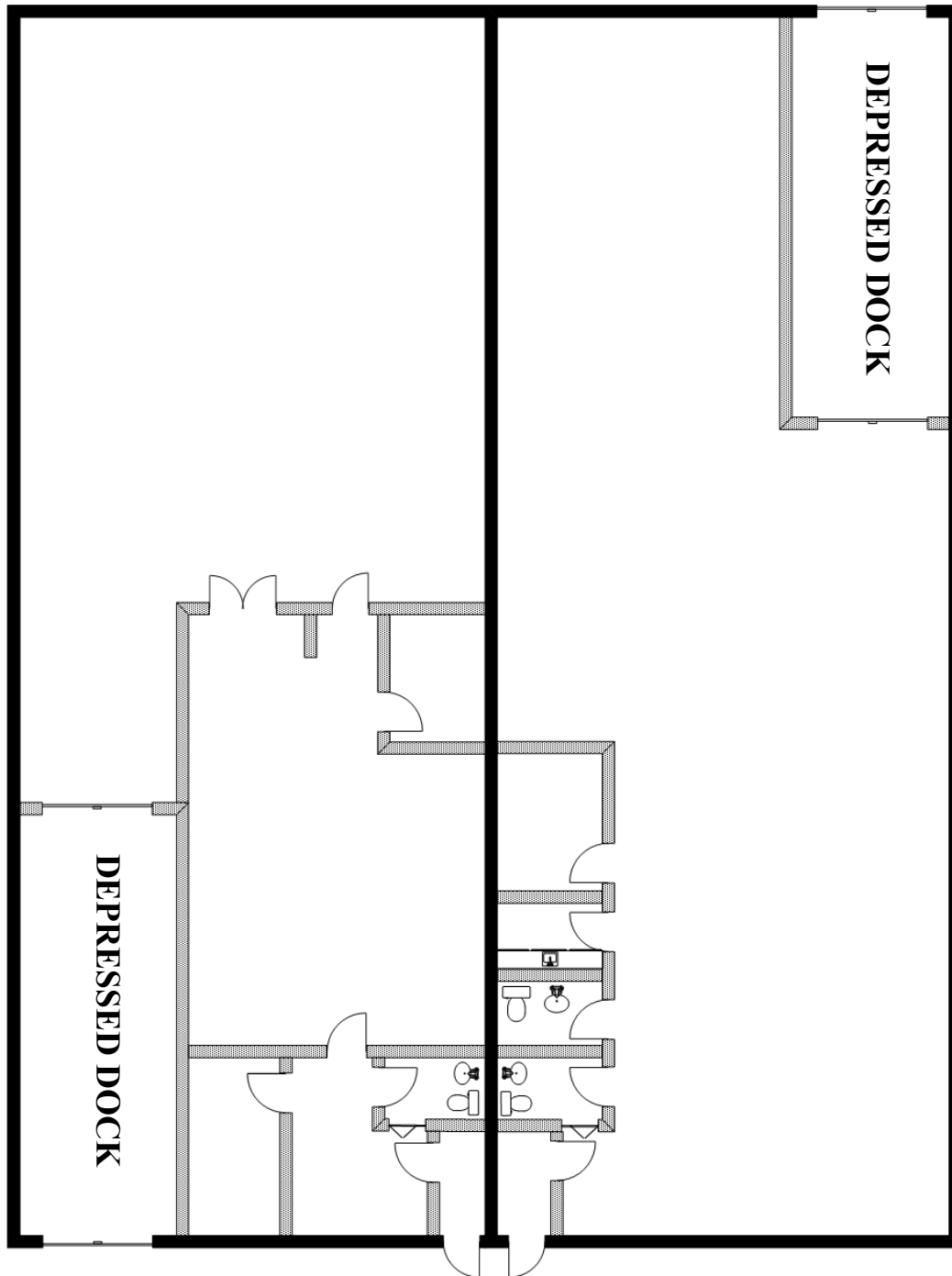


# VALUE INDUSTRIAL PARTNERS, LLC

Industrial Real Estate Investment, Brokerage and Management

477 W. Wrightwood Avenue, Elmhurst, Illinois 60126 TEL: 630-333-1900 FAX: 630-333-1910

## LAYOUT



Officers of the firm have an ownership interest in this property.  
Submitted subject to error, change in status, or withdrawal without notice.