

WILLIAMSBURG, BROOKLYN NY

# 750 GRAND STREET



# SPACE DETAILS

## LOCATION

Between Graham Ave & Humboldt St

## SPACE

Space A: 1000 SF

Space B: 800 SF

## CEILING HEIGHT

10 Feet

## POSSESSION

Immediate

## ASKING RENT

Upon Request

## NEIGHBORS

Chase, T-Mobile, Absolute Power Gym, McDonald's, Verizon, Foodtown of Grand Street, Aburi Sushi, Subway, BK JANI, Bahia, Taco Bell, Morelos, Williamsburg Health Center, Café Miguel, Mama Pho, Sage

## TRANSPORTATION



## COMMENTS

- Office Space for Lease in Williamsburg
- Two restrooms in place
- HVAC in Place
- All uses considered
- Newly White Boxed
- Spaces can be combined

# CONTACTS

## MEYER DAGMY

718-249-3613

m@modcre.com

## EDDIE MAMIYE

917-379-6719

e@modcre.com

## ISAAC BIJOU

718-594-6377

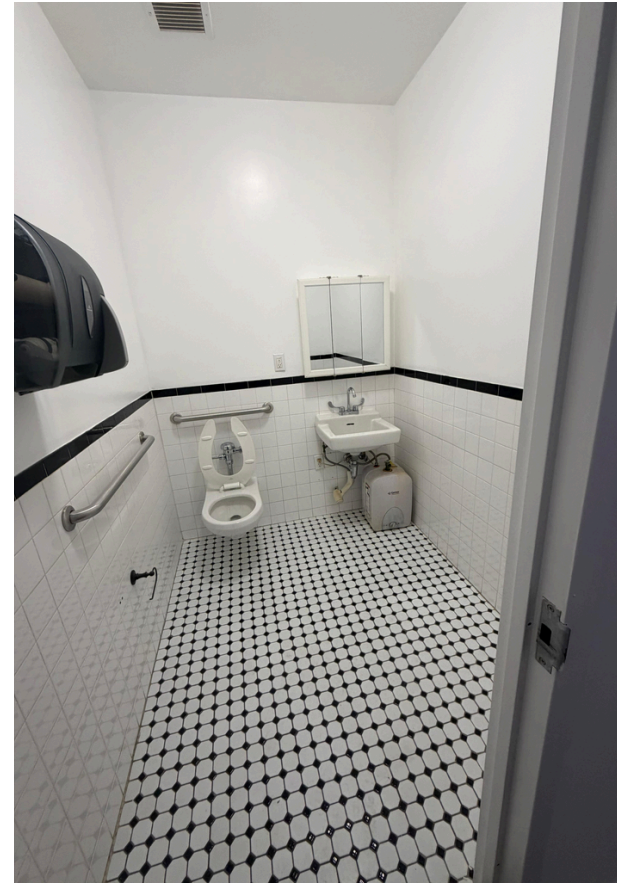
ib@modcre.com



2774 CONEY ISLAND AVE, BROOKLYN, NY 11235

©2026 MODCommercialRealtyLLC. All information provided is deemed reliable, but is not guaranteed and should be independently verified.

# SPACE A IMAGES



## CONTACTS

### MEYER DAGMY

718-249-3613

m@modcre.com

### EDDIE MAMIYE

917-379-6719

e@modcre.com

### ISAAC BIJOU

718-594-6377

ib@modcre.com



2774 CONEY ISLAND AVE, BROOKLYN, NY 11235

©2026 MODCommercialRealtyLLC. All information provided is deemed reliable, but is not guaranteed and should be independently verified.

# SPACE B IMAGES



## CONTACTS

### MEYER DAGMY

718-249-3613

m@modcre.com

### EDDIE MAMIYE

917-379-6719

e@modcre.com

### ISAAC BIJOU

718-594-6377

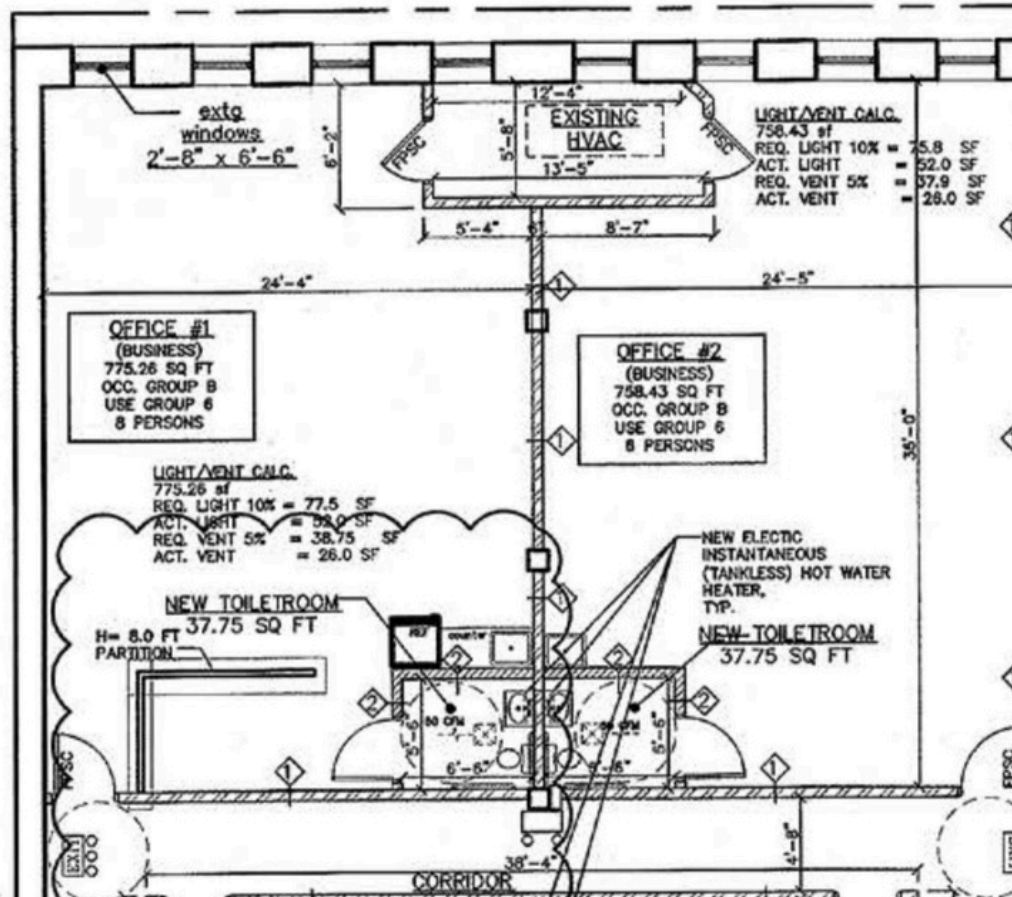
ib@modcre.com



2774 CONEY ISLAND AVE, BROOKLYN, NY 11235

©2026 MODCommercialRealtyLLC. All information provided is deemed reliable, but is not guaranteed and should be independently verified.

# FLOOR PLAN



## CONTACTS

### MEYER DAGMY

718-249-3613

m@modcre.com

### EDDIE MAMIYE

917-379-6719

e@modcre.com

### ISAAC BIJOU

718-594-6377

ib@modcre.com



2774 CONEY ISLAND AVE, BROOKLYN, NY 11235

©2026 MODCommercialRealtyLLC.Allinformationprovidedis deemed reliable, but is not guaranteed and should be independently verified.

# AREA MAP



## CONTACTS

### MEYER DAGMY

718-249-3613

m@modcre.com

### EDDIE MAMIYE

917-379-6719

e@modcre.com

### ISAAC BIJOU

718-594-6377

ib@modcre.com



2774 CONEY ISLAND AVE, BROOKLYN, NY 11235

©2026 MODCommercialRealtyLLC. All information provided is deemed reliable, but is not guaranteed and should be independently verified.