

RANDOLPH MEDICAL PARK

SPEC SUITE 206R | 2,923 RSF

3535 RANDOLPH ROAD
CHARLOTTE, NC 28211



SCAN TO LEARN MORE ABOUT THIS LISTING

Stillwater

LEASE THIS MODERN, MOVE-IN READY MEDICAL SUITE

COMING SOON!

Pre-Lease Your Move-In Ready SPEC Suite Today

Our SPEC suites combine convenience and quality in one perfect package. With sleek, modern finishes already in place, these suites are designed to be fully operational as soon as you move in. **Skip the hassle and delays of construction and permitting**—just move in and start seeing patients!

IMAGE IS A REPRESENTATION. ACTUAL SUITE MAY DIFFER.

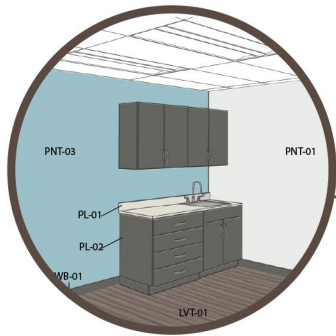


FOR LEASING INFORMATION, CONTACT:

REGIONAL LEASING DIRECTOR: Erreca White | erreca.white@lillibridge.com / 706.373.2889

SPEC SUITE - STILLWATER FINISH PALETTE

SUITE 206R | 2,923 RSF
RANDOLPH MEDICAL PARK



FINISH
RENDERING



LUXURY
VINYL TILE



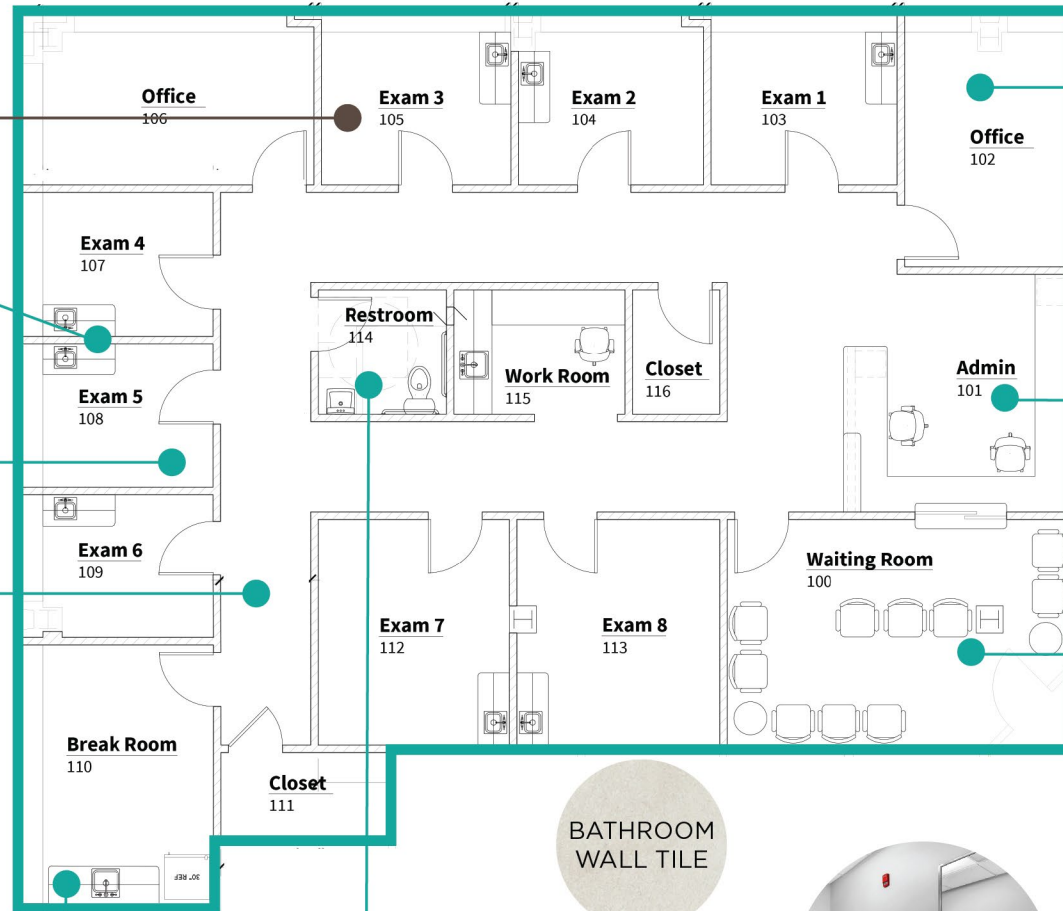
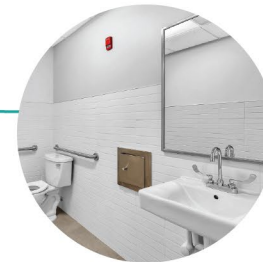
HARDWARE /
METAL FINISH



PLASTIC
LAMINATE
CABINETS

LAMINATE
COUNTERTOP

BATHROOM
FLOOR TILE &
WALL BASE



BATHROOM
WALL TILE

STILLWATER COLOR PALETTE

PNT-01:
OVERALL PAINT

PNT-02:
ACCENT PAINT - OFFICE

PNT-03:
ACCENT PAINT - PATIENT ROOM

PNT-04:
DOOR FRAME PAINT

PHOTOS AND RENDERINGS DEPICT FINISHES AND COLOR SCHEME, NOT THE ACTUAL SUITE.