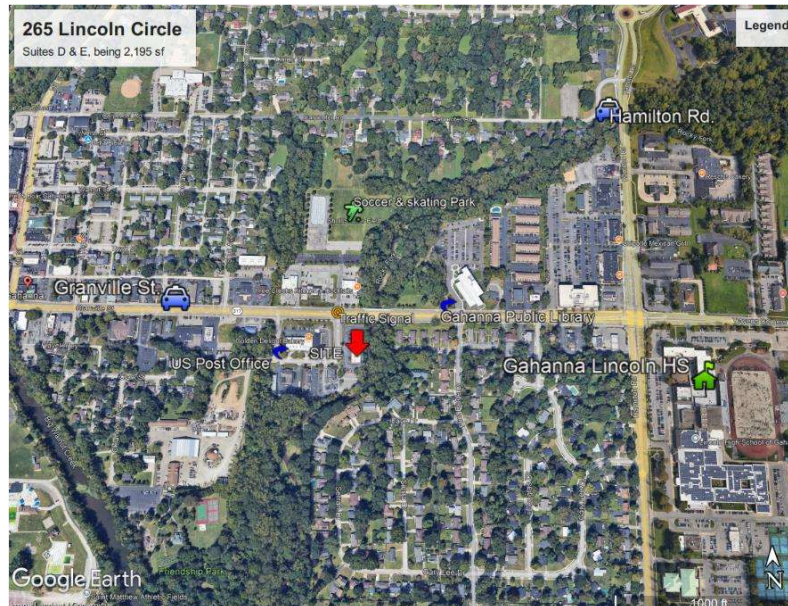


RETAIL SPACE FOR LEASE

265 Lincoln Circle Units D & E, Gahanna, Ohio 43230

2,195 ± S.F. Retail Space Available



Aerial of Property

Front Elevation



Steven Master- Broker
SMRE Brokerage
Master.SMREBrokerage@gmail.com
614.419.0080

RETAIL SPACE FOR LEASE 2,195 SQ FT

265 Lincoln Circle Units D & E, Gahanna, Ohio 43230

2021 Demographics

1 Miles 3 Miles 5 Miles

Property has onsite parking, excellent visibility and signalized access.
The building is located in a high populated area.

	1 Miles	3 Miles	5 Miles
Population	8,315	54,200	227,215
Households	3,479	24,230	90,331
Annual Growth	1.1%	.5%	.6%
Median Age	40.6	38.3	37.3
Daytime Employees	6,653	39,599	99,660
Av.HH Income	\$110,967	\$108,825	\$96,062

Traffic Counts for Retail Site

Traffic Count- Adjacent Granville Street is 22,772 (2023)

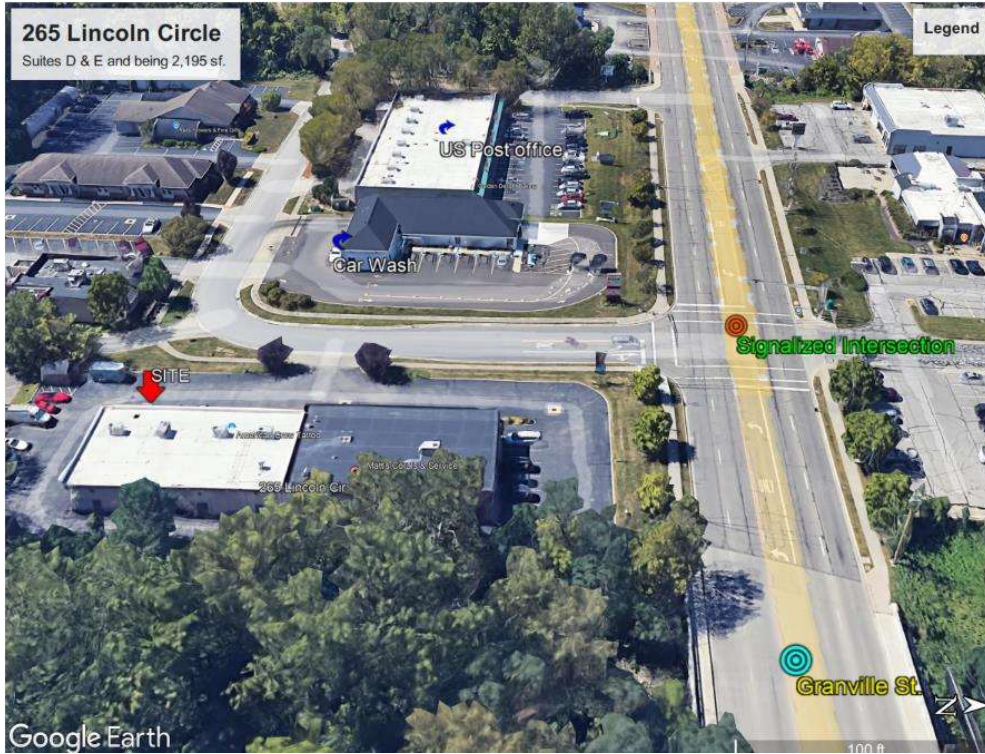
End Cap Position



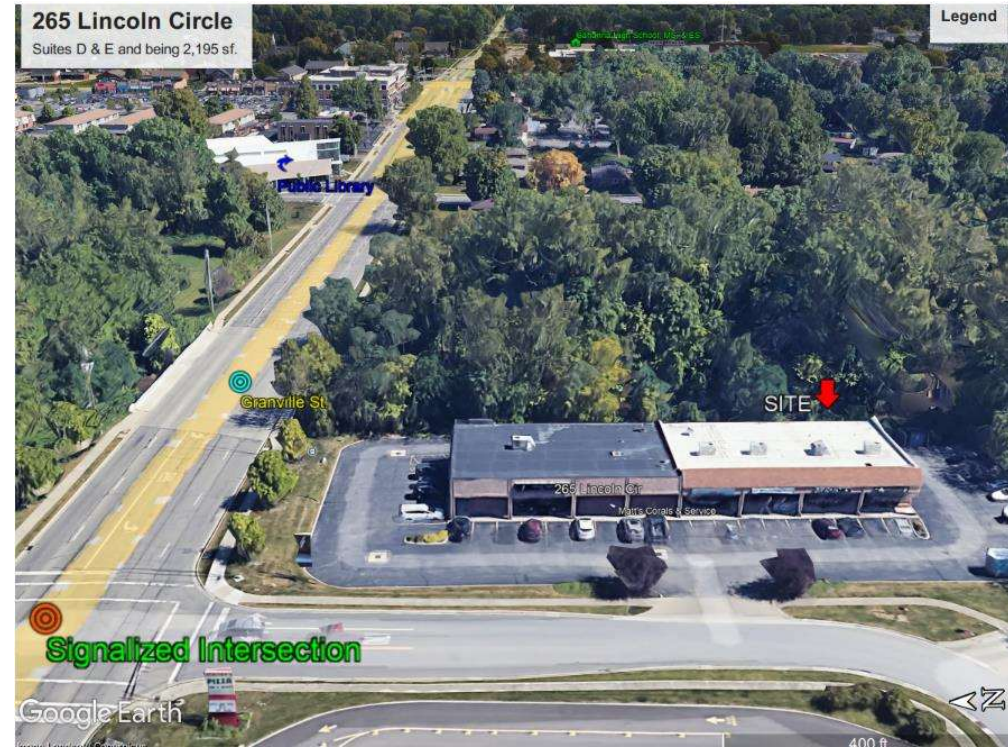
Area Generators

- Public Library ■ Soccer & Skating Park
- Panera ■ High School
- US Post Office ■ Donatos
- Dairy Queen ■ Wendy's

West Facing Aerial



East Facing Aerial



Steven Master- Broker
SMRE Brokerage
Master.SMREBrokerage@gmail.com
614.419.0080

Plat Map

Steven Master- Broker
 SMRBrokerage
 Master.SMREBrokerage@gmail.com
 614.419.0080



Steven Master- Broker
 SMRBrokerage
 Master.SMREBrokerage@gmail.com
 614.419.0080

- Planimetric Legend**
 Source: 2021 Aerial Photography
- Edge of Pavement
 - Roadway Centerlines
 - Railroad Centerlines
 - Building Footprints
 - Building Under Construction
 - Creeks, Streams, Ditches
 - Rivers & Ponds
- Topographic Legend**
 Source: USFP - 2014 USGS Collection
- Spot Elevation
 - Index Contour
 - Intermediate Contour
- Appraisal Legend**
 Source: Franklin County Auditor & Engineer
- Parcel IDs
 - Parcel Dimensions
 - Lot Numbers
 - Site Address
 - Parcel Boundary
 - Subdivision Boundary
 - Condominium Boundary
 - County Boundary
 - City or Village Boundary
 - Tax District Boundary
 - School District Boundary
 - Zip Code Boundary

The information on this map is prepared from the best available information furnished by the Franklin County Auditor's Office. Users of this data are advised that the primary information source should be checked for verification of the information contained herein. The county and its auditor assume no legal responsibility for the information contained on this site. Please notify the Franklin County Auditor's Office of any inaccuracies.

0 0.01 0.01
 mi

The data on this map was originally compiled at 1"=100' based on the Ohio State Plane South Coordinate System, North American Datum 1983 with 2' contour based on the North American Vertical Datum 1988 (when displayed).



Franklin County Auditor's Office Auditor
 Michael Stinziano
 Map Produced March 23, 2026