

FOR LEASE  
**3660 SW 30TH AVENUE**

PALM CITY, FL 34990



**\$33.00/SF Gross**  
**PROFESSIONAL OFFICE SPACE**



# SUMMARY

## PROPERTY DETAILS

Location: 3660 SW 30th Avenue  
Palm City, FL 34990

Office Size: ±1,235 SF

## PROPERTY OVERVIEW

Located at a primary entrance to Palm City, this upscale property serves a desirable community with strong demographics.

Easy access to the FL Turnpike and I-95 allow this property to conveniently serve customers from Palm City and beyond. In addition, the Veterans Memorial Bridge provides a direct link into Stuart.

The space can accommodate a variety of professional services with the layout including a welcoming reception area, multiple private offices, and waiting area.

Additional amenities include a kitchenette and access to the second-floor balcony.

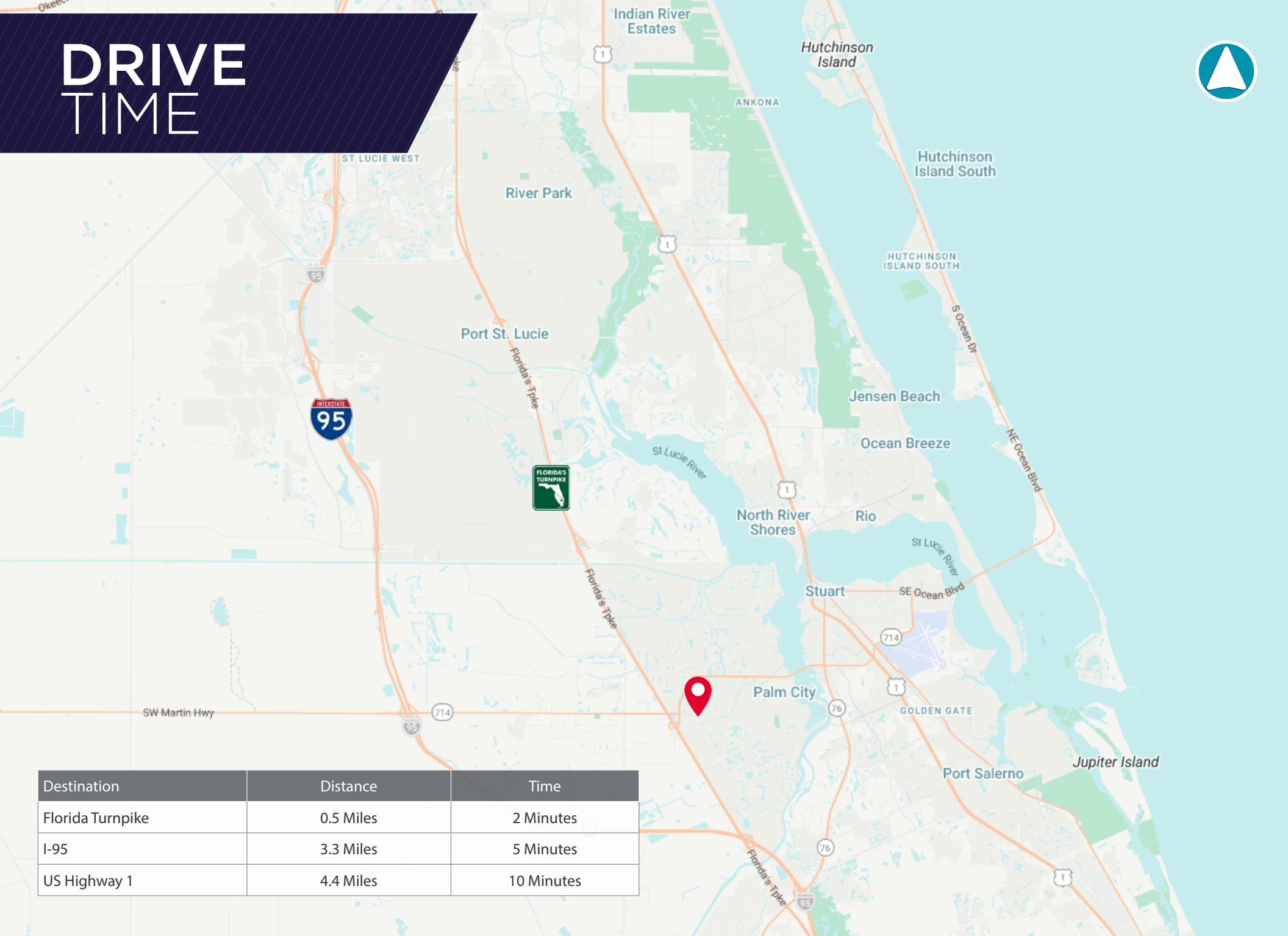
Join other established professional tenants, where customers enjoy high-end common spaces and ample parking!



# OFFICE PHOTOS

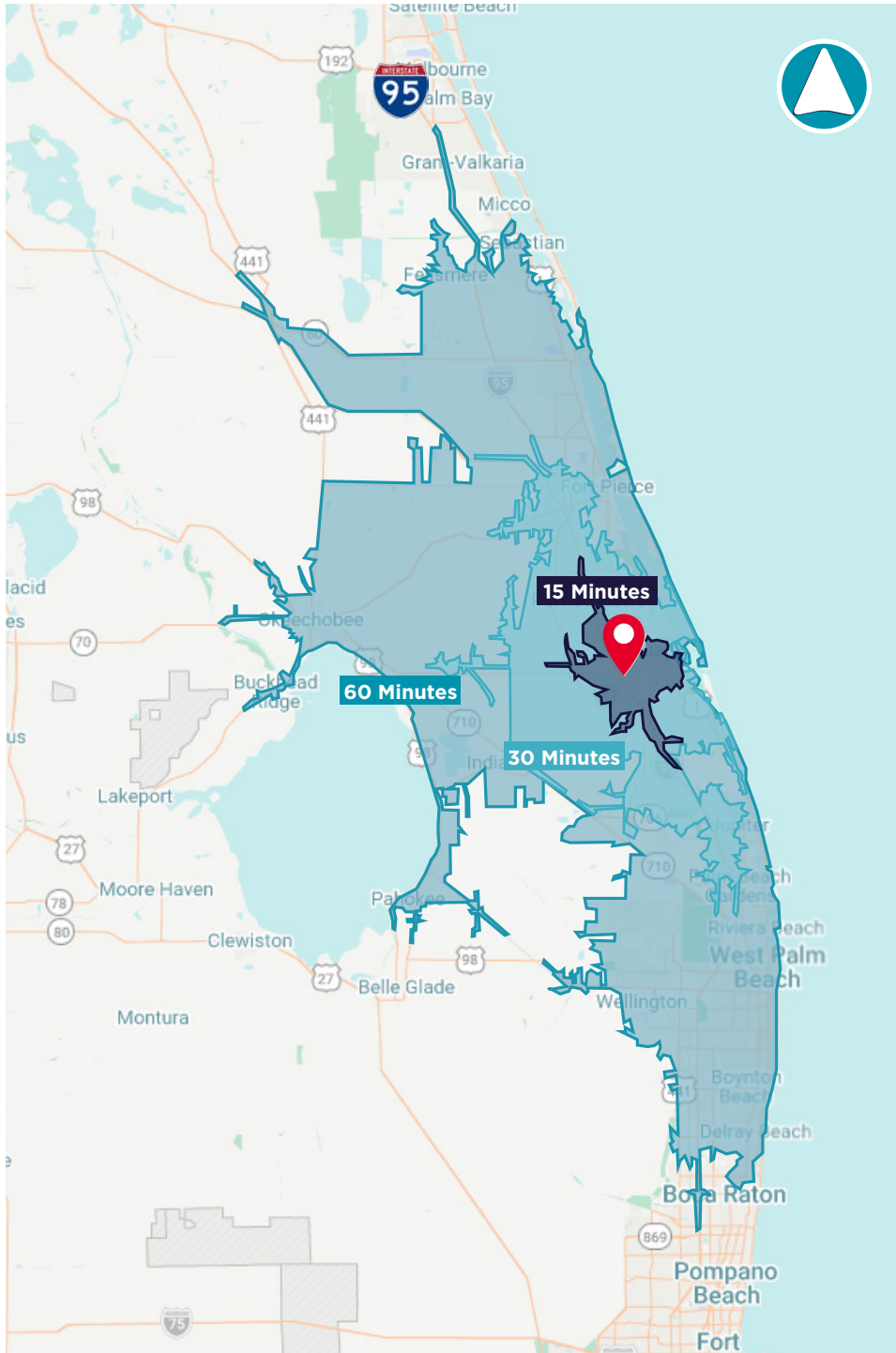


# DRIVE TIME



Destination	Distance	Time
Florida Turnpike	0.5 Miles	2 Minutes
I-95	3.3 Miles	5 Minutes
US Highway 1	4.4 Miles	10 Minutes

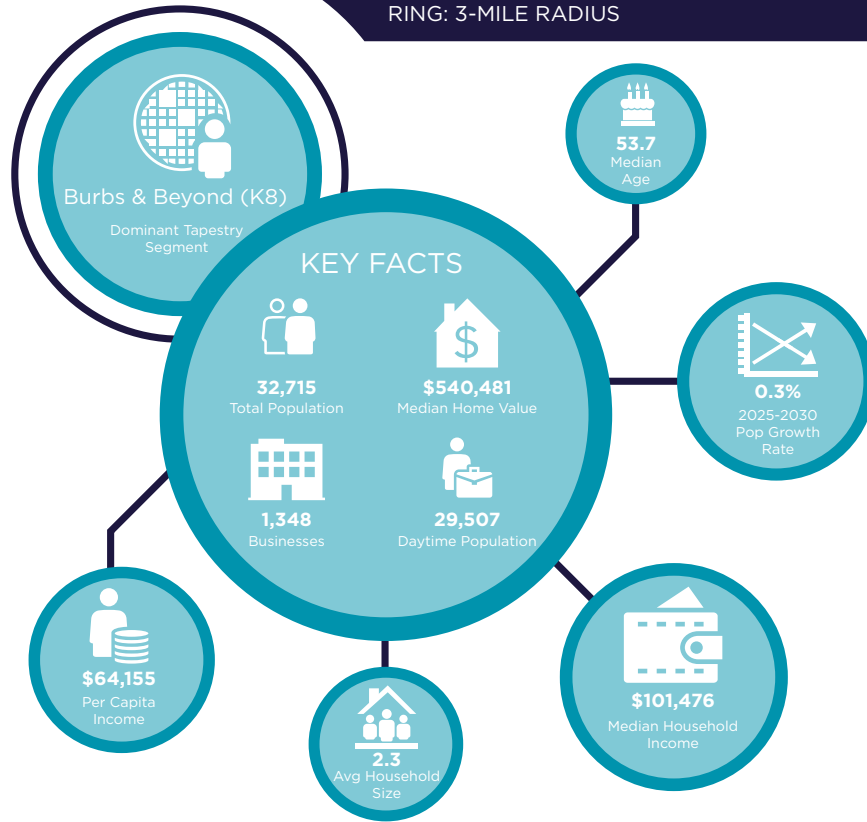
# DRIVE TIME



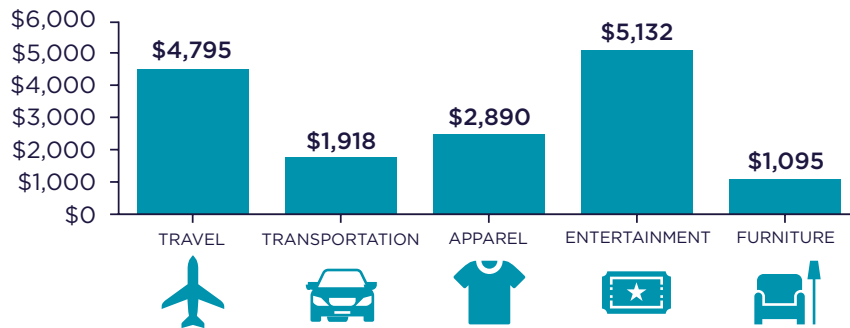
15 MINUTES	30 MINUTES	60 MINUTES
<b>78,078</b> 2010 Population	<b>405,694</b> 2010 Population	<b>1,668,145</b> 2010 Population
<b>95,855</b> 2025 Population	<b>520,801</b> 2025 Population	<b>2,015,976</b> 2025 Population
<b>22.77%</b> 2010-2025 Population Growth	<b>28.37%</b> 2010-2025 Population Growth	<b>20.85%</b> 2010-2025 Population Growth
<b>0.98%</b> 2025-2030 (Annual) Est. Population Growth	<b>1.63%</b> 2025-2030 (Annual) Est. Population Growth	<b>0.98%</b> 2025-2030 (Annual) Est. Population Growth
<b>48.0</b> 2025 Median Age	<b>47.7</b> 2025 Median Age	<b>46.8</b> 2025 Median Age
<b>\$120,909</b> Average Household Income	<b>\$120,513</b> Average Household Income	<b>\$122,885</b> Average Household Income
<b>47.6%</b> Percentage with Associates Degree or Better	<b>47.6%</b> Percentage with Associates Degree or Better	<b>48.2%</b> Percentage with Associates Degree or Better
<b>59.9%</b> Percentage in White Collar Profession	<b>61.6%</b> Percentage in White Collar Profession	<b>60.3%</b> Percentage in White Collar Profession

# 2025 DEMOGRAPHICS

3660 SW 30TH AVENUE, PALM CITY, FL, 34990  
RING: 3-MILE RADIUS



## KEY SPENDING FACTS



Source: This infographic contains data provided by Esri (2024, 2029), Esri-Data Axle (2024), Esri-U.S. BLS (2024).

© 2025 Esri  
Spending facts are average annual dollars per household

## POPULATION

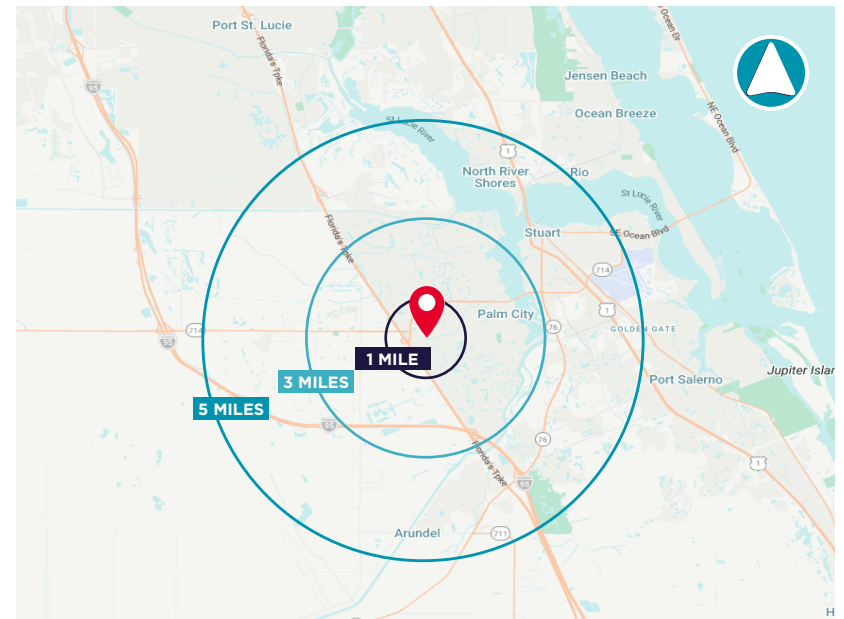
1 Mile:	5,546
3 Mile:	32,715
5 Mile:	79,877

## AVERAGE HOUSEHOLD INCOME

1 Mile:	\$132,423
3 Mile:	\$145,369
5 Mile:	\$126,413

## MEDIAN AGE

1 Mile:	47.1
3 Mile:	53.7
5 Mile:	51.0



3660 SW 30th avenue, palm city, fl 34990

# CITY OVERVIEW



## Palm City, Florida

Palm City, situated in Martin County, Florida, is a captivating blend of natural beauty and suburban charm. Nestled along the St. Lucie River, this scenic town offers a tranquil escape from the bustling cities nearby. Renowned for its lush landscapes, Palm City showcases an array of palm trees and well-manicured greenery, painting a picturesque backdrop against the Florida sky.

The community prides itself on a family-friendly atmosphere, with top-rated schools, safe neighborhoods, and a strong sense of camaraderie. Residents enjoy a range of recreational opportunities, including boating, fishing, and golfing, thanks to the area's proximity to water bodies and golf courses. The historic downtown area exudes a quaint ambiance, hosting local boutiques, eateries, and cultural events that reflect the town's unique character.

Palm City's location offers easy access to both the Atlantic Coast and the Gulf of Mexico, making it a haven for water enthusiasts and nature lovers. The warm climate ensures year-round outdoor enjoyment, while the town's commitment to preserving its natural surroundings contributes to a sustainable and eco-friendly lifestyle. Palm City, Florida, is more than just a location; it's a lifestyle embraced by those who value a balance between nature's splendor and modern comforts. Whether you seek serene landscapes, engaging community activities, or a peaceful haven to call home, Palm City invites you to experience its one-of-a-kind charm.

# REGIONAL OVERVIEW

## Martin County, Florida

The cities that make up Martin County include Jensen Beach/Rio, Stuart/Sewall's Point, Hutchinson Island, Hobe Sound, Jupiter/ Tequesta, Palm City, Port Salerno and Indiantown. Martin County is a wonderful place to visit and live, with beaches, golf, fishing and boating. The County boasts arts, quaint downtowns with shops, gourmet dining, galleries, museums, historic places, festivals and more.

*Martin County is for...*

The golf enthusiast... Martin County is home to over 35 world-class golf courses all within a 15-mile radius. The sun worshiper... The County offers its visitors and residents alike some of the finest beaches on the east coast. The discriminating arts shopper...More than 20 galleries participate in a monthly First Thursday gallery night. Many of these galleries are in the historic downtowns of Stuart, Jensen Beach, Port Salerno and Hobe Sound. The music lover...The historic Lyric Theatre offers a wide-array of fist class talent nearly 300 days a year...This acoustically amazing theatre features concerts for all music lovers, from classical to rock and roll, and theatrical performances by local and national talent.

Mark your calendars for a plethora of events to look forward to in Martin County, Florida. The Stuart Air Show, Stuart Boat Show, ArtsFest, and the Martin County Fair are just some of the many events taking place throughout the year. The Treasure Coast Children's Museum, located at Indian Riverside Park, is a great place for kids and families, offering a water play area, fishing, and a riverfront view. Often, there are events in the park including concerts, orchid shows, and more. Indian Riverside Park also features the Maritime and Yachting Museum. Hutchinson Island is home to the Elliott Museum which celebrates the genius of innovation, creativity and the historical events of Martin County. Named after the prolific inventor Sterling Elliott, the museum hosts permanent exhibits showcasing Model A Trucks, early transportation, the history of Stuart and its surrounding regions, and baseball memorabilia. For the scientifically minded and curious kids, the Florida Oceanographic Coastal Center offers fun opportunities to learn about our local ecosystem.



# OFFERING SUMMARY

PROFESSIONAL OFFICE SPACE

3660 SW 30TH AVENUE, PALM CITY, FL, 34990

**FOR LEASE**  
\$33.00/SF NNN



**Douglas Legler**  
Senior Director  
+1 772 678 7606  
doug.legler@cushwake.com



**Casey Combs**  
Director  
+1 772 678 7611  
casey.combs@cushwake.com



©2026 Cushman & Wakefield. All rights reserved. The information contained in this communication is strictly confidential. This information has been obtained from sources believed to be reliable but has not been verified. NO WARRANTY OR REPRESENTATION, EXPRESS OR IMPLIED, IS MADE AS TO THE CONDITION OF THE PROPERTY (OR PROPERTIES) REFERENCED HEREIN OR AS TO THE ACCURACY OR COMPLETENESS OF THE INFORMATION CONTAINED HEREIN, AND SAME IS SUBMITTED SUBJECT TO ERRORS, OMISSIONS, CHANGE OF PRICE, RENTAL OR OTHER CONDITIONS, WITHDRAWAL WITHOUT NOTICE, AND TO ANY SPECIAL LISTING CONDITIONS IMPOSED BY THE PROPERTY OWNER(S). ANY PROJECTIONS, OPINIONS OR ESTIMATES ARE SUBJECT TO UNCERTAINTY AND DO NOT SIGNIFY CURRENT OR FUTURE PROPERTY PERFORMANCE.