



For Sale

**805 Harrison Avenue**  
**South End Neighborhood**  
**Boston, MA 02118**



# Property Overview

Conviser Property Group is pleased to offer this Commercial Condominium currently used as a restaurant for sale. Located in Worcester Square in Boston's Historic South End. This unit is directly across from Boston Medical Center and is surrounded by restaurants, cafes and brownstone homes.

## Property Stats

<b>Property Address</b>	805 Harrison Ave., Boston, MA 02118
<b>Available Space</b>	1,200 SF plus 700 SF Basement
<b>Offering</b>	\$900,000
<b>Condo Fee</b>	\$1,857.04/month
<b>Taxes</b>	\$13,375/year

## Demographics

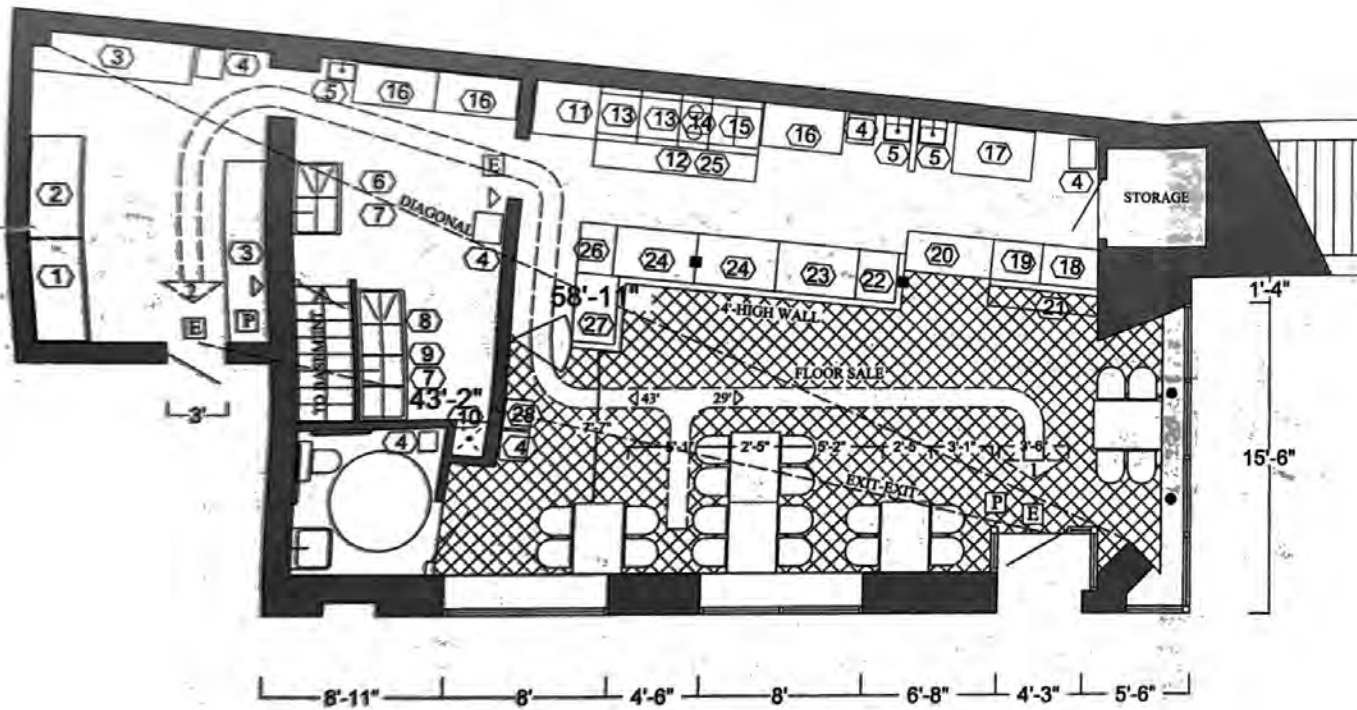
	.5 Mi	1 Mi	10 Min Drive
<b>Population</b>	21,598	80,936	273,261
<b>Average HH Income</b>	\$104,379	\$102,885	\$115,389
<b>Total Daytime Employees</b>	1,177	5,055	403,084



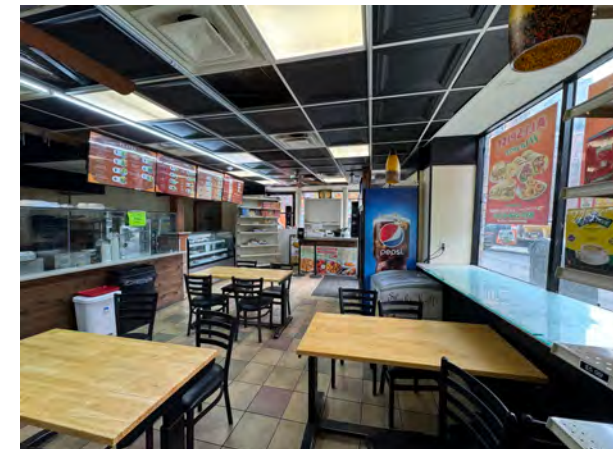
# Floor Plan

## Property Highlights

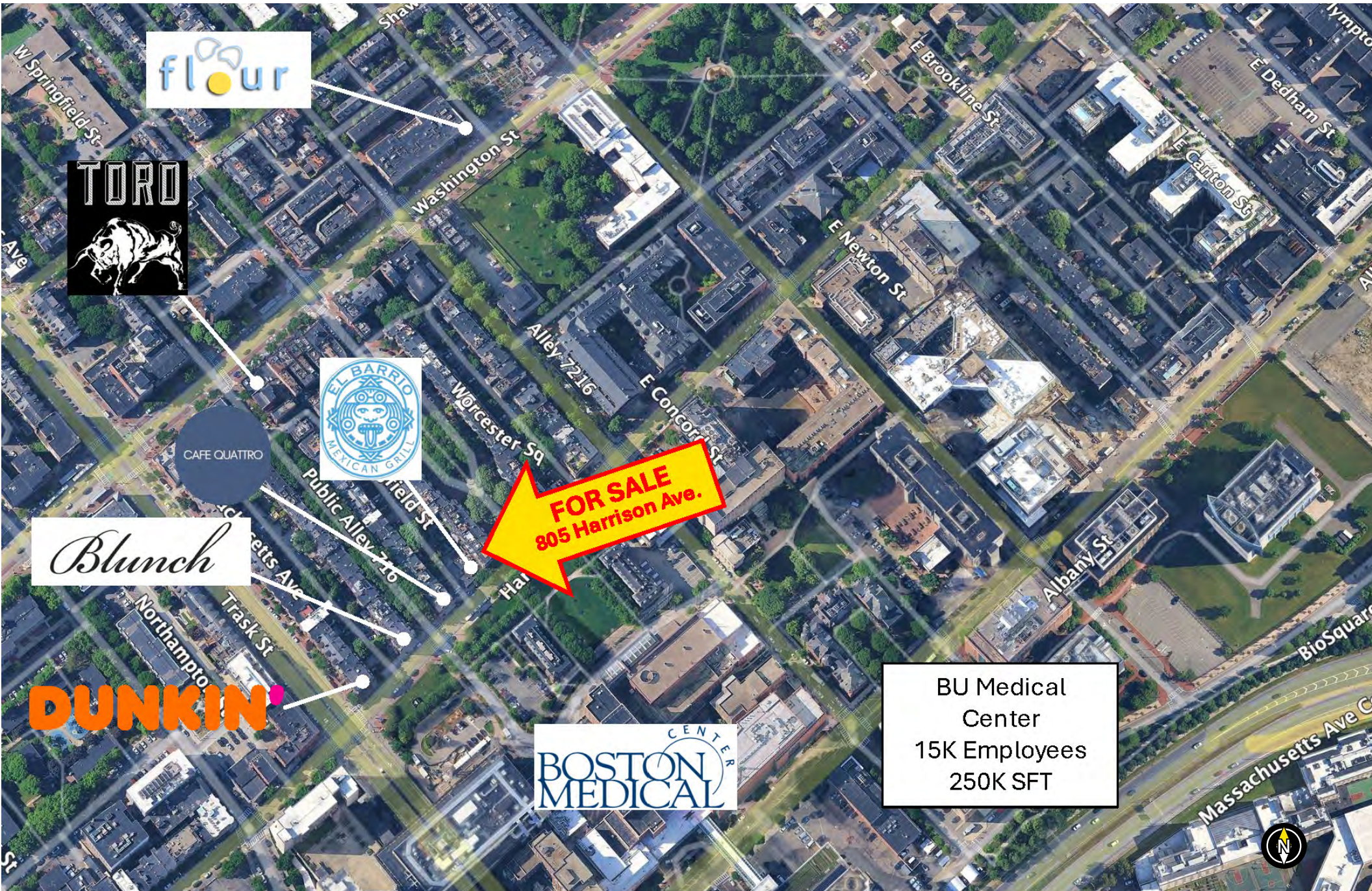
- Commercial Condominium in Boston's South End, Worcester Square
- Directly across the street from Boston Medical Center
- Close proximity to MBTA and commuter rail
- 1,200 SF plus 700 SF basement
- Offered at \$900,000



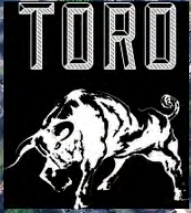
HARRISON AVENUE



# AERIAL



flour



CAFE QUATTRO

Blunch

DUNKIN'

**FOR SALE**  
805 Harrison Ave.

BOSTON MEDICAL CENTER

BU Medical Center  
15K Employees  
250K SFT



# Find Your Place.

**JIM CONVISER**

jim@conviserpg.com

Mobile: (617) 839-0456



**CONVISER PROPERTY GROUP, INC**

**220 RESERVOIR STREET • SUITE 9 • NEEDHAM, MA 02494**

**O: (781) 320-0060 • F: (781) 791-4599 • [WWW.CONVISERPG.COM](http://WWW.CONVISERPG.COM)**