






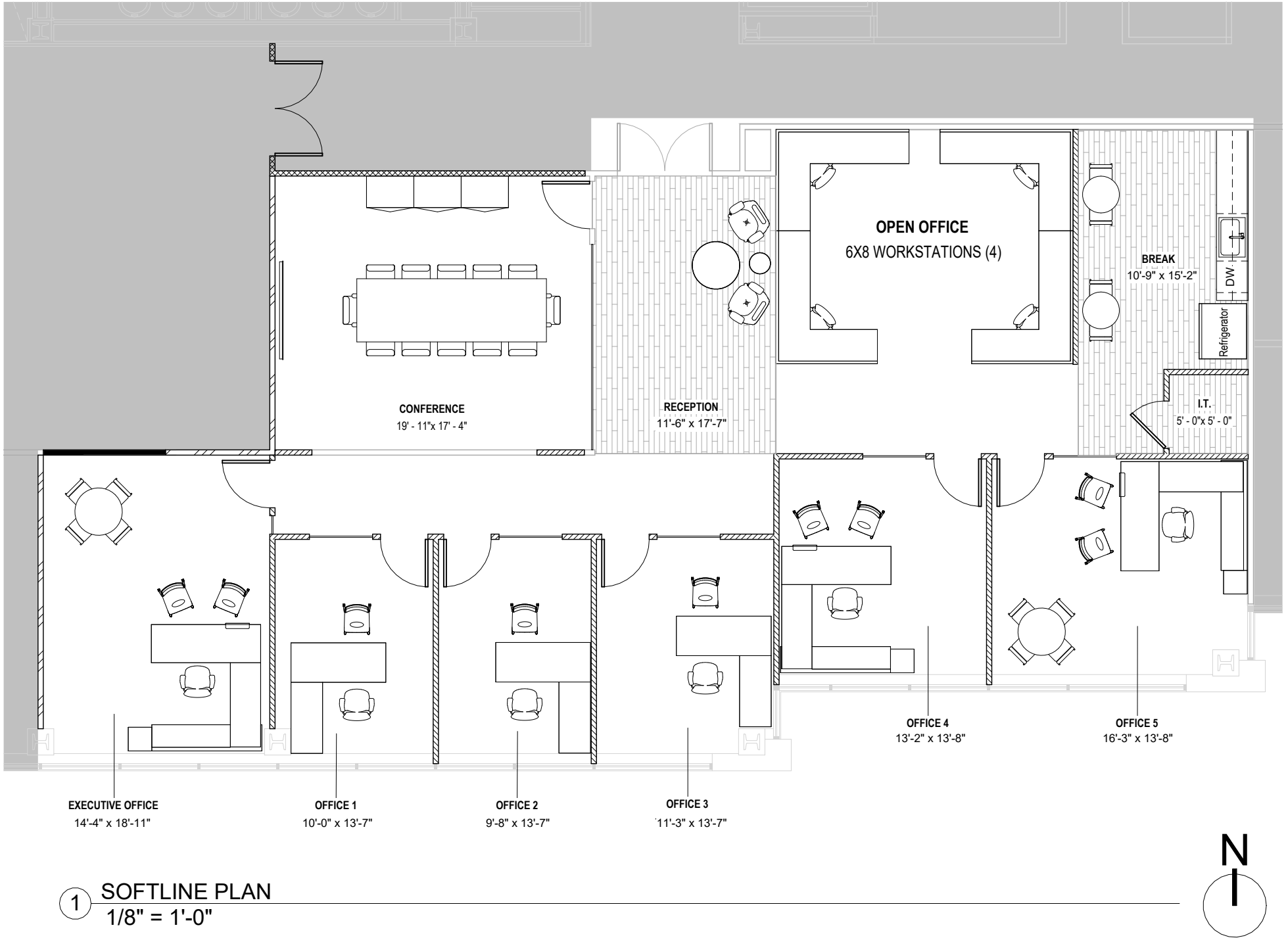
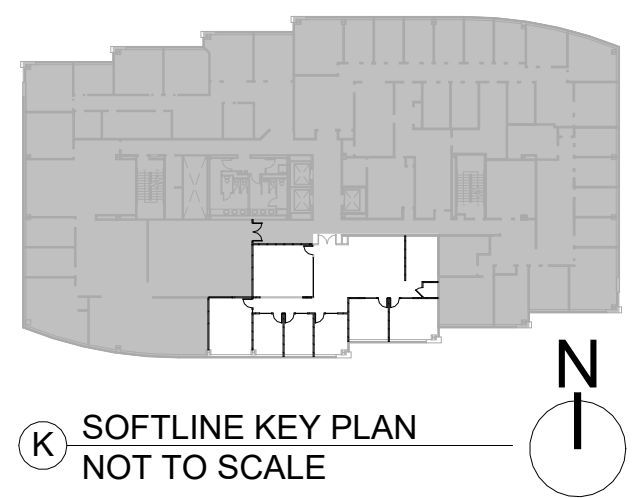


**PARTITION LEGEND:**

-  EXISTING PARTITION TO REMAIN
-  EXISTING PARTITION TO BE UPGRADED TO DEMISING WALL
-  NEW BLDG. STD. TENANT DEMISING PARTITION, FLOOR TO DECK w/ 6" AIR GAP
-  NEW BLDG. STD. PARTITION, FLOOR TO FINISHED CEILING
-  NEW BLDG. STD. CORRIDOR PARTITION, MATCH EXISTING CONSTRUCTION, U.O.N. \*MUST MAINTAIN 1 HR RATING
-  NEW BLDG. STD. GLAZING
-  N.I.C



1 SOFTLINE PLAN  
1/8" = 1'-0"



K SOFTLINE KEY PLAN  
NOT TO SCALE



999 18th St. Suite 1430-S  
Denver, CO 80202  
www.waringoffice.com

ORCHARD POINTE  
8480 EAST ORCHARD RD.  
GREENWOOD VILLAGE, CO 80111

**LEVEL 6**  
**SPEC SUITE**  
SUITE 6600 | 3,103 RSF

**NOT FOR CONSTRUCTION**

<b>DRAWN BY:</b>	PP/CC
<b>ISSUE DATE:</b>	02.20.2026
<b>SCALE:</b>	As indicated

**SOFTLINE PLAN - REVISION**