

**AVAILABLE FOR
SUB-LEASE**

**2701 South Woodland Blvd.,
Deland, FL 32720**

PROPERTY HIGHLIGHTS

- 3,592 SF End Cap
- SEQ of South Woodland Blvd & Orange Camp Rd
- Delivery Immediately

West Volusia
Shopping
Center

2024 DEMOGRAPHICS

	1 MILE	3 MILE	5 MILE
Population	3,059	41,465	96,165
Median HH Income	\$100,499	\$78,954	\$70,331
Median Age	46.1	46.7	45.0

CO-TENANTS



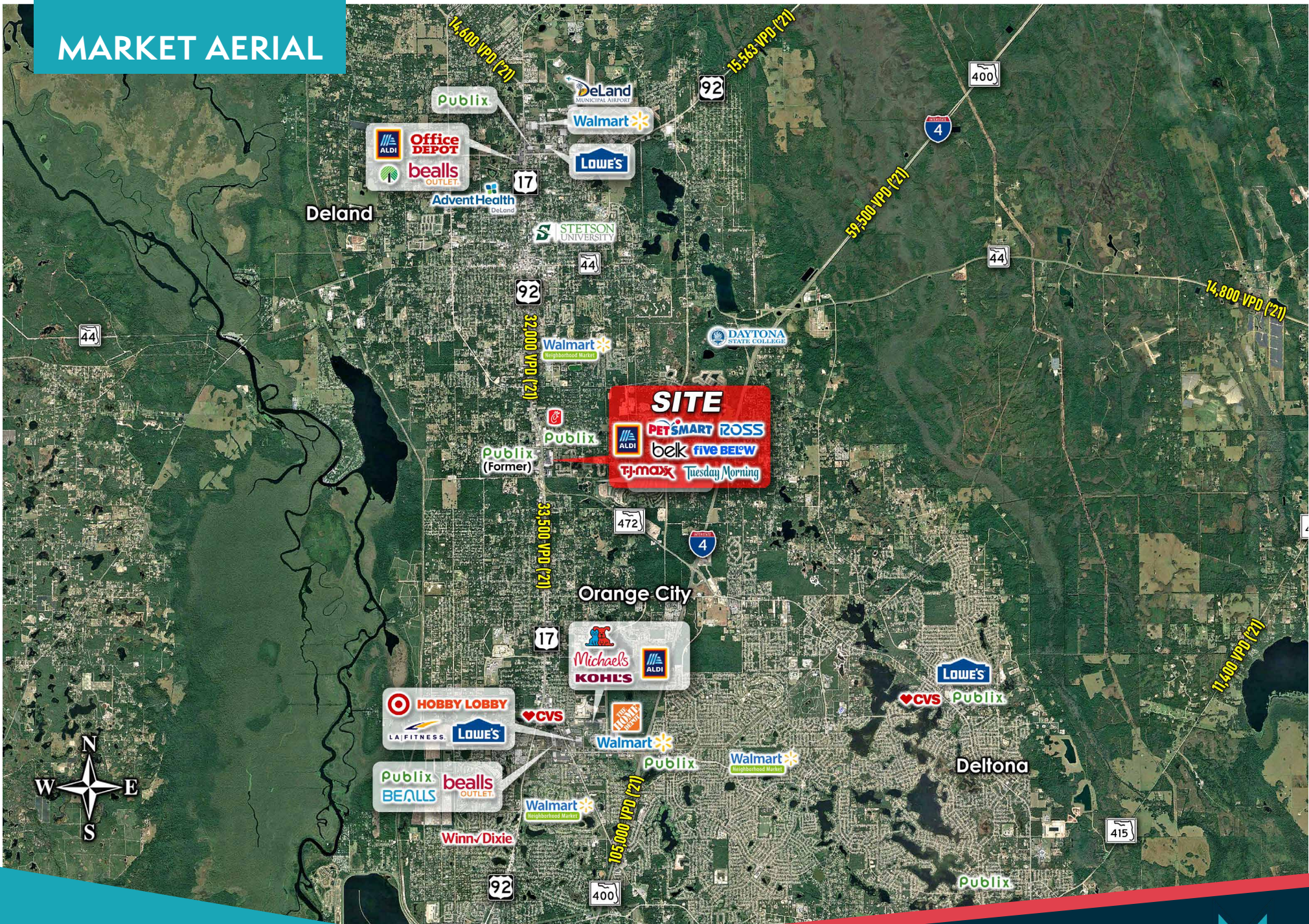
SITE AERIAL



ELIZABETH WRIGHT
561.699.2790
ewright@marketlinkcre.com

BRENT ANDREWS
772.708.1599
brent@marketlinkcre.com

MARKET AERIAL

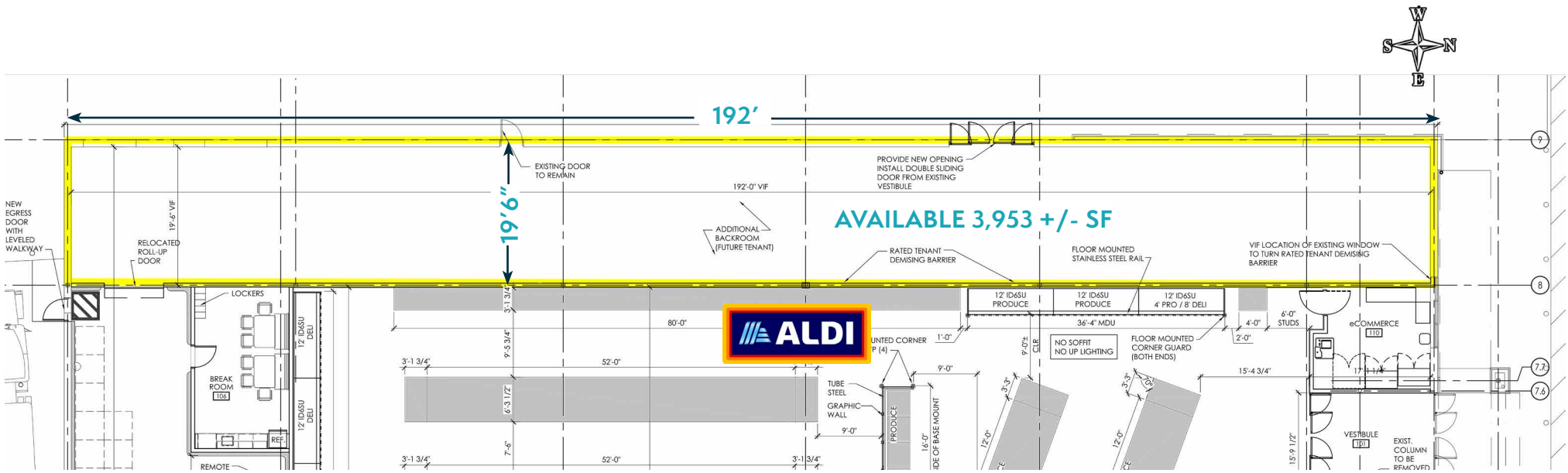


ELIZABETH WRIGHT
561.699.2790
ewright@marketlinkcre.com

BRENT ANDREWS
772.708.1599
brent@marketlinkcre.com



SITE PLAN



ELIZABETH WRIGHT
561.699.2790
ewright@marketlinkcre.com

BRENT ANDREWS
772.708.1599
brent@marketlinkcre.com