

# 1725 North Commerce Parkway

Weston, FL 33326

## SUBLEASE AVAILABLE

\*\*LONGER TERM OR DIRECT LEASE AVAILABLE



Sublease Space  
**\*52,960 SF**

Lease Expiration  
**\*\*02/28/2027**

Rate  
**Negotiable**

FF&E  
**Negotiable**

\*Space can be subdivided

### Greg Martin

Principal, Managing Director

(954) 903-1815

greg.martin@avisonyoung.com

### Justin Cope, SIOR

Principal

(954) 903-3701

justin.cope@avisonyoung.com

### Lisa Blumer, CCIM

Principal

(954) 903-3703

lisa.blumer@avisonyoung.com

**AVISON  
YOUNG**

# Building Features



52,960 SF



Single Story Building



## Workforce-Ready

Fully furnished with workstations, offices, support areas, and large open spaces for 400+ employees.



## Location & Accessibility

Class A facility in Weston Park of Commerce with premier surroundings and signage rights. Easy access to I-75, Sawgrass Expressway, and I-595.



## Parking & Exterior

Above-market parking ratio of 7/1,000, 348 spaces, resealed and restriped lot.



## Infrastructure & Reliability

Upgraded electrical/plumbing, new roof, 72-hour backup generator, and efficient HVAC.

### Greg Martin

Principal, Managing Director

(954) 903-1815

greg.martin@avisonyoung.com

### Justin Cope, SIOR

Principal

(954) 903-3701

justin.cope@avisonyoung.com

### Lisa Blumer, CCIM

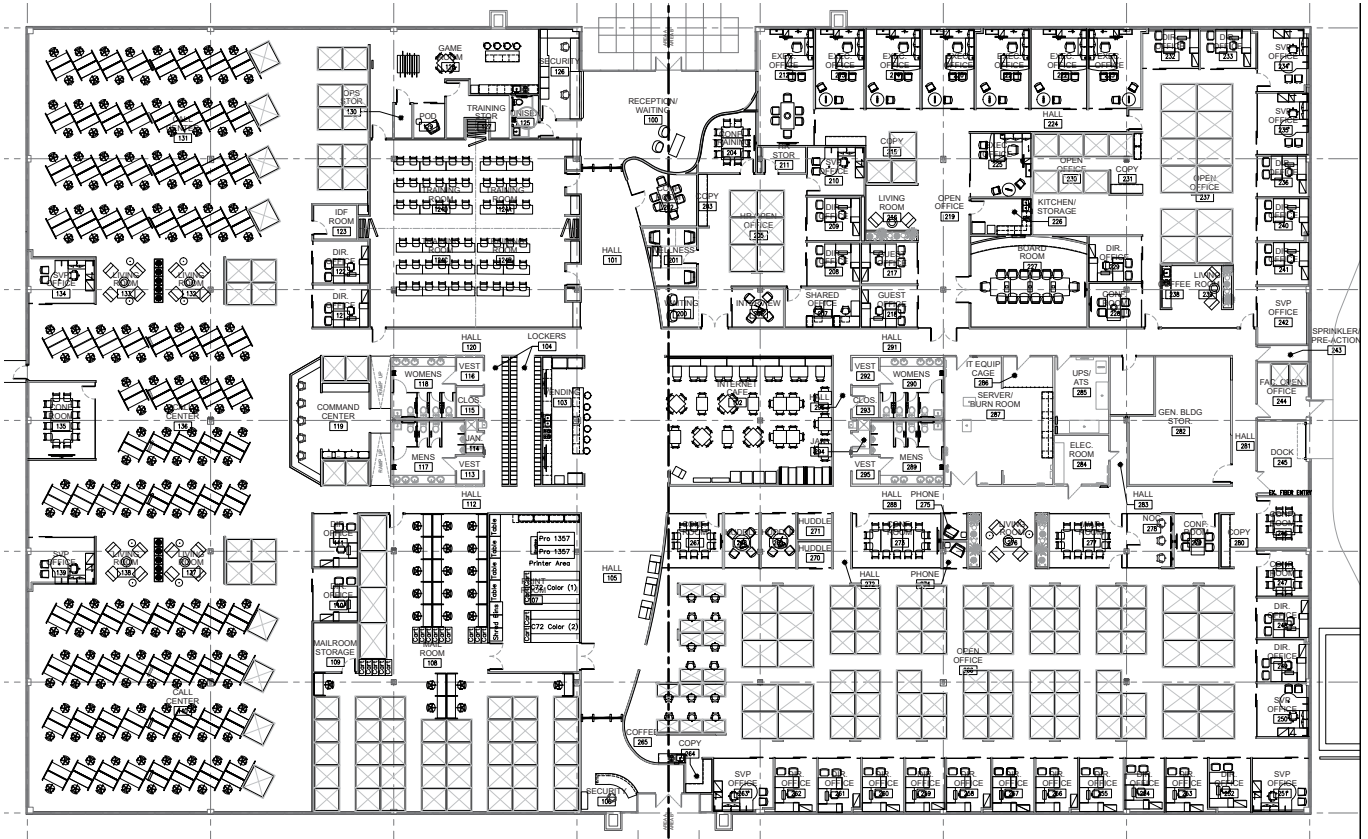
Principal

(954) 903-3703

lisa.blumer@avisonyoung.com

**AVISON  
YOUNG**

# Space Features



42 Private  
Offices



1 Large  
Training Room



Collaboration  
Area



Kitchen



2 Large  
Conference Rooms



Open Office  
Area



Internet  
Cafe



Reception  
Area

**Greg Martin**

*Principal, Managing Director*

(954) 903-1815

greg.martin@avisonyoung.com

**Justin Cope, SIOR**

*Principal*

(954) 903-3701

justin.cope@avisonyoung.com

**Lisa Blumer, CCIM**

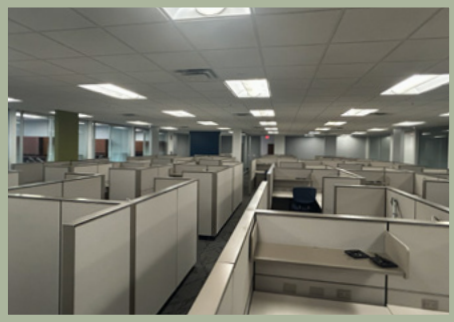
*Principal*

(954) 903-3703

lisa.blumer@avisonyoung.com

**AVISON  
YOUNG**

# Gallery



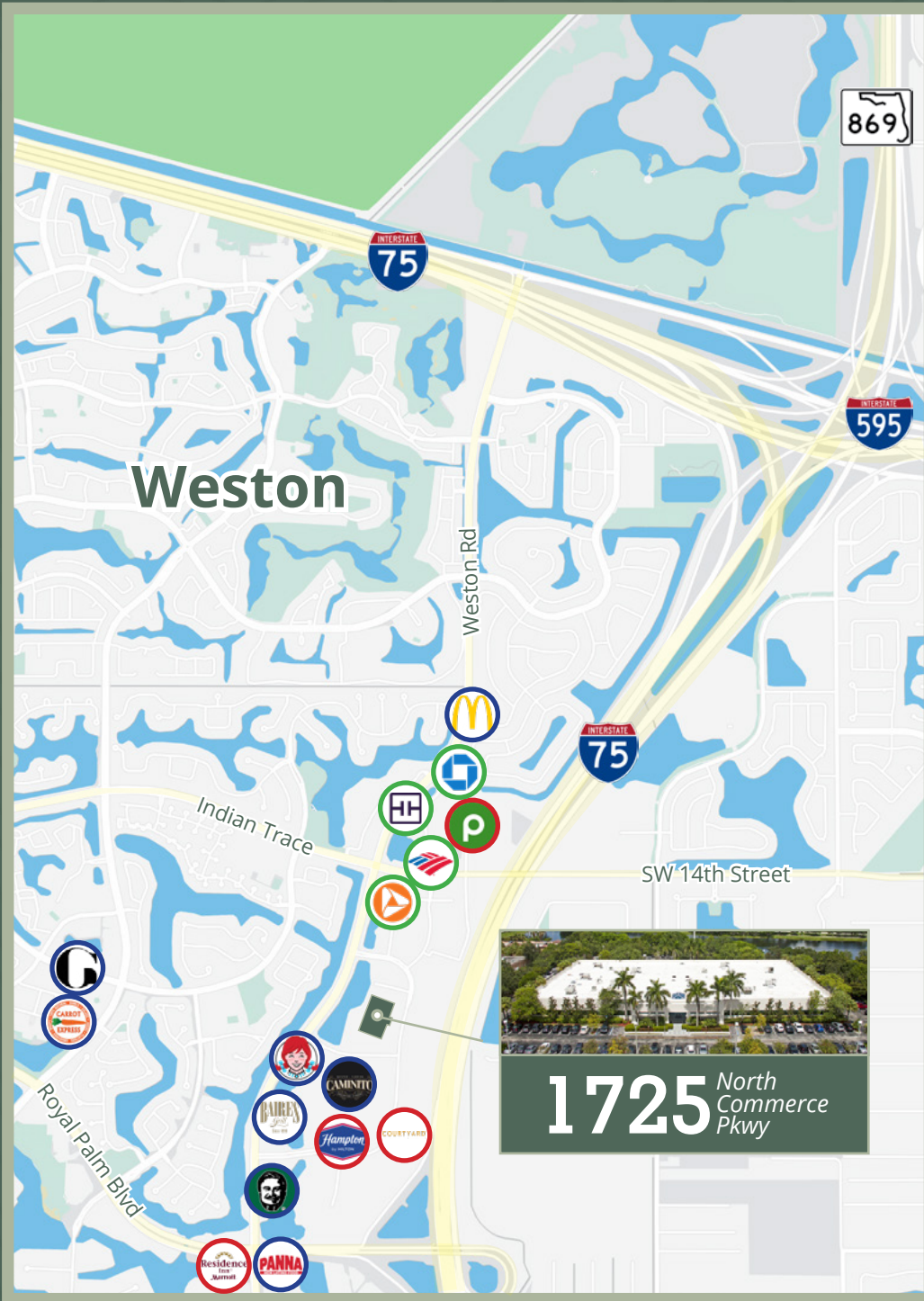
**Greg Martin**  
*Principal, Managing Director*  
(954) 903-1815  
greg.martin@avisonyoung.com

**Justin Cope, SIOR**  
*Principal*  
(954) 903-3701  
justin.cope@avisonyoung.com

**Lisa Blumer, CCIM**  
*Principal*  
(954) 903-3703  
lisa.blumer@avisonyoung.com



# Property Location



## Financial

Chase  
Truist  
Bank of America  
PNC Bank

## Restaurants

McDonald's  
Graziano's  
Carrot Express  
Wendy's  
Baires Grill  
Caminito Weston  
Flanigan's  
Panna

## Miscellaneous

Publix  
Courtyard by Marriott  
Hampton Inn  
Residence Inn

### Greg Martin

Principal, Managing Director

(954) 903-1815

greg.martin@avisonyoung.com

### Justin Cope, SIOR

Principal

(954) 903-3701

justin.cope@avisonyoung.com

### Lisa Blumer, CCIM

Principal

(954) 903-3703

lisa.blumer@avisonyoung.com

**AVISON  
YOUNG**