

**FOR SUBLEASE**  
**4,998 SF OFFICE SPACE**



**1900 DUKE ST**  
**ALEXANDRIA, VA**

For more information, contact:

**WILL THOMAS**  
Director  
+1 703 770 3417  
williamson.thomas@cushwake.com

**RYAN DUNN**  
Associate  
+1 202 463 1367  
ryan.dunn@cushwake.com





# 1900 DUKE ST ALEXANDRIA, VA

## SUBLEASE FEATURES

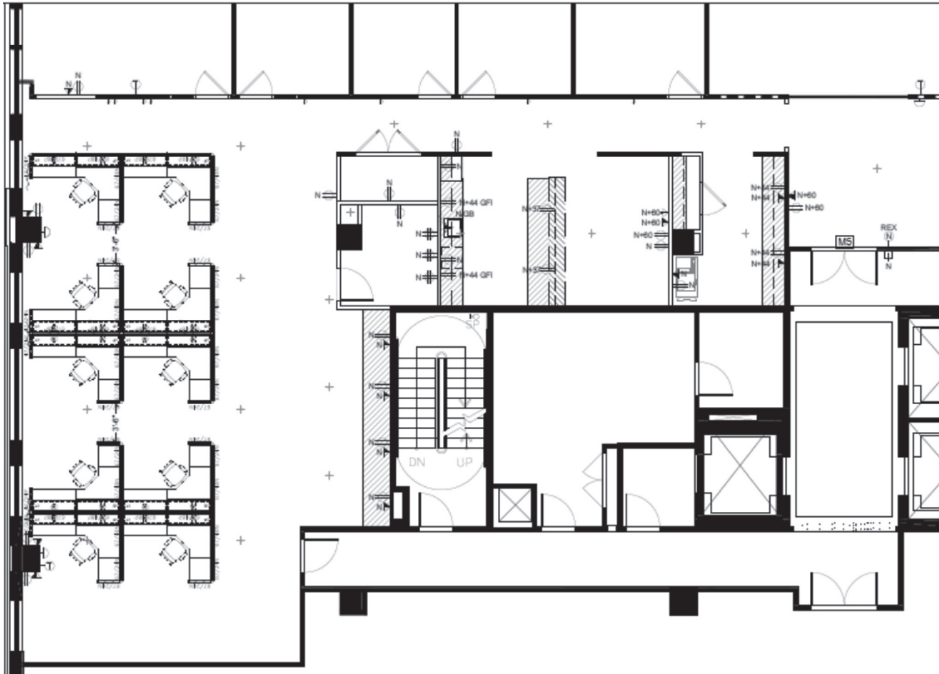
- 4,998 SF available on the 6th floor
- Available immediately
- Term through 7/31/2030
- Furnished spec suite

## PROPERTY HIGHLIGHTS

- Brand new conference center & lounge
- Newly renovated lobby
- Fitness center & golf simulator
- LEED Gold Certified building
- Well Health-Safety rated building
- Located in Old Town Alexandria
- WiredScore Gold
- Walking distance to King Street metro and Alexandria train station

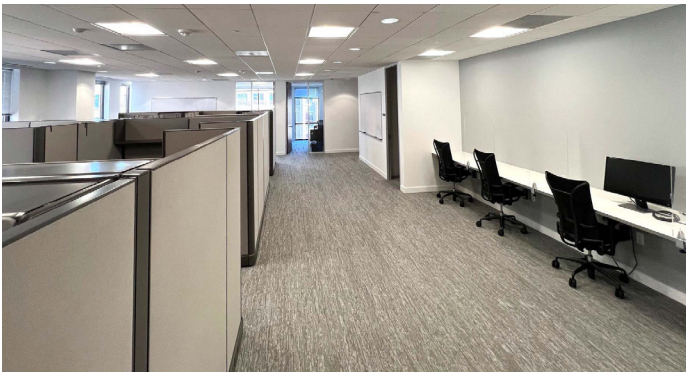


# 1900 DUKE ST ALEXANDRIA, VA



## 4,998 SF SUITE 605

- High-end spec suite
- 5 windowed offices
- 10 workstations
- 1 interior office
- Kitchen and workroom in suite
- 14-person conference room
- Furniture available

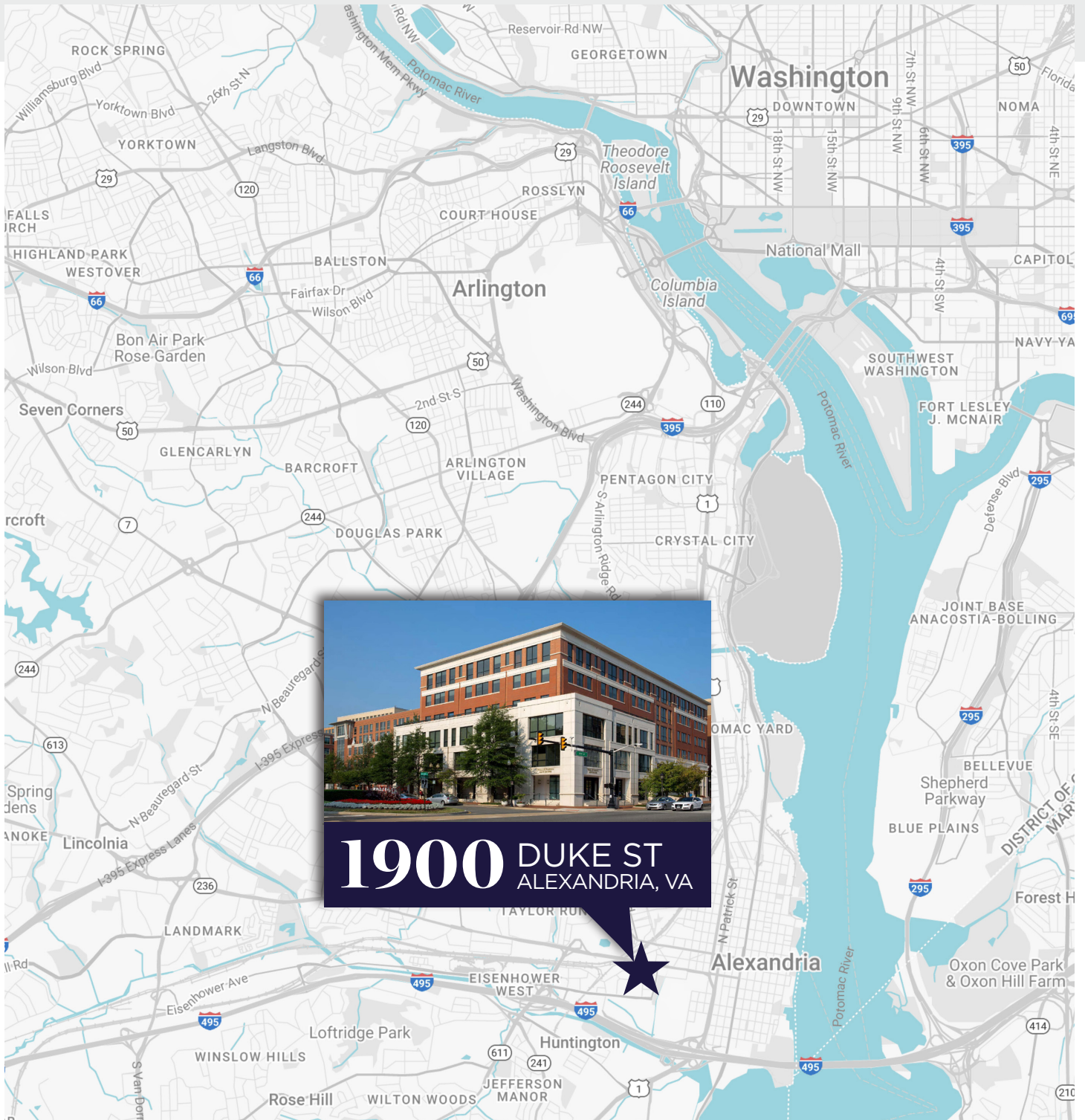


For more information, contact:

**WILL THOMAS**  
Director  
+1 703 770 3417  
williamson.thomas@cushwake.com

**RYAN DUNN**  
Associate  
+1 202 463 1367  
ryan.dunn@cushwake.com





**1900 DUKE ST**  
ALEXANDRIA, VA

©2025 Cushman & Wakefield. All rights reserved. The information contained in this communication is strictly confidential. This information has been obtained from sources believed to be reliable but has not been verified. NO WARRANTY OR REPRESENTATION, EXPRESS OR IMPLIED, IS MADE AS TO THE CONDITION OF THE PROPERTY (OR PROPERTIES) REFERENCED HEREIN OR AS TO THE ACCURACY OR COMPLETENESS OF THE INFORMATION CONTAINED HEREIN, AND SAME IS SUBMITTED SUBJECT TO ERRORS, OMISSIONS, CHANGE OF PRICE, RENTAL OR OTHER CONDITIONS, WITHDRAWAL WITHOUT NOTICE, AND TO ANY SPECIAL LISTING CONDITIONS IMPOSED BY THE PROPERTY OWNER(S). ANY PROJECTIONS, OPINIONS OR ESTIMATES ARE SUBJECT TO UNCERTAINTY AND DO NOT SIGNIFY CURRENT OR FUTURE PROPERTY PERFORMANCE. COE-PM-West-08.12.2025

For more information, contact:

**WILL THOMAS**  
Director  
+1 703 770 3417  
williamson.thomas@cushwake.com

**RYAN DUNN**  
Associate  
+1 202 463 1367  
ryan.dunn@cushwake.com

