

No.	Equipment	Manufacturer	Model No.	Size (in.)	Qty.	Elec.	Gas	Remarks
KITCHEN AND PREP								
001	6-Burner Range			36Wx30Dx36H	2	-	-	-
002	Freestanding Oven			38"(w)X42(d)X62(h)	1	-	-	-
003	Steamer 36"			36Wx30Dx36H	1	-	-	-
004	Steam Table			47Wx30 1/2Dx34H	1	-	-	-
005	Fryer			21"(w)X 34(d)X54(h)	1	-	-	3 wells, 3 full size pans
006	Fryer Dump Station			15"X30Dx36H	1	-	-	-
007	Griddle			24Wx30Dx36H	1	-	-	-
008	2-Door Refrigerator			54Wx29"X78H	1	-	-	-
009	2-Door Freezer			54Wx32"X82H	1	-	-	-
010	Sandwich Cooler Prep			120Wx37Dx32H	1	-	-	with drawers
011	3-Comp. Sink			121(w)X29"(d)X44(h)	1	-	-	-
012	2-Comp. Sink			72Wx27Dx42H	1	-	-	with drain board
013	Hand Sink			15"X17"X13H	see plan	-	-	-
014	Dishwasher			24(w)X25(d)X32	1	-	-	-
015	Mop Sink				1	-	-	-
016	Prep. Area Cooler			60Wx36Dx36H	2	-	-	-
017	Wire Rack Shelving			48Wx12Dx34H	see plan	-	-	-
018	Stick Blender			on counter	1	-	-	-
019	Food Processor			on counter	1	-	-	-
020	Blender			on counter	1	-	-	-
021	Rice Warmer 100 cup			on counter	1	-	-	-
022	Rice Warmer 50 cup			on counter	1	-	-	-
023	S.S. Wall-Mntd Shelving			on wall	cor. w/wner	-	-	-
024	Microwave Oven					-	-	-
025	Panini Grill			20"Wx4"D		-	-	-
026	Hood					-	-	-
BAR								
050	U.C. Dishwasher			23"X26"X32"HT	1	-	-	-
051	U.C. Bar Cooler			60Wx28"X varies	2	-	-	-
052	Under Bar Ice Bin			36Wx18Dx33H	1	-	-	-
053	Not Used					-	-	-
054	Drop-in Hand Sink			19Wx13D	1	-	-	-
055	Espresso Machine			38Wx22Dx21H	1	-	-	-
056	Refrigerated Display			61Wx34Dx56"HT	1	-	-	-
057	Espresso Grinder			7Wx22D	1	-	-	-
058	Bunn Hot Water Dispenser			10Wx24"X34"HT	1	-	-	-
059	Blender			8Wx7Dx16"HT	2	-	-	-
060	Twin Shuttle Coffee Brew			16"X18Dx17H	2	-	-	-
061	Bunn Iced Tea Machine			11"X22Dx35H	3	-	-	-
062	Walk-in Cooler				1	-	-	-

WALL KEY:

WALL HATCH	WALL DESCRIPTION
	EXISTING CONCRETE COLUMN
	EXISTING EXTERIOR BEARING MASONRY WALL EXISTING BRICK WALL, CLEAN AND SEAL, COORDINATE W/OWNER
	EXIST. STOREFRONT OR DEMISING WALL, NO CHANGE.
	INTERIOR PARTITION- FULL HEIGHT: 3 5/8" METAL STUDS @ 16" O.C., 1 LAYER 1/2" TYPE 'X' GYP. BD. EACH SIDE.
	INTERIOR PARTITION -10' HIGH: 3 5/8" METAL STUDS @ 16" O.C., 1 LAYER 1/2" GYP. BD. EACH FACE. * GYP. BD. EXCEPTION @ STAIRWELL, REFER TO NOTE ON FLOOR PLANS
	PLUMBING WALL -10' HIGH: 6" METAL STUDS @ 12" O.C. WITH 1/2" GYP. BD, EACH SIDE. (USE 1/2" CONCRETE BOARD IN WET LOCATIONS)
	FURRED OUT WALL - 6" HIGH, WITH CAP: 3 5/8" METAL STUD, 1 LAYER 1/2" GYP. BD.

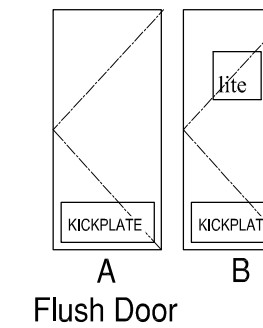
NOTE: ALL FINISHES SHALL BE SELECTED BY INTERIOR DESIGNER

FINISH SCHEDULE			
FLOOR	TYPE	MARK	DESCRIPTION
	F-1	COOK, PREP & DISHWASHING	12"x12" QUARRY TILE, ABRASIVE
	F-2	RESTROOMS	12"x12" QUARRY TILE, ABRASIVE
	F-3	BAR	12"x12" QUARRY TILE, ABRASIVE
	F-4	SEATING AREAS	EPOXY APPLIED TO SEALED AND LEVELED EXIST. FLOOR
	F-5	EMPLOYEE LOUNGE & L.L. STORAGE	EPOXY APPLIED TO SEALED AND LEVELED EXIST. FLOOR
BASE	B-1	COOK, PREP & DISHWASHING	6" QUARRY TILE COVE BASE
	B-2	RESTROOMS	6"x12" QUARRY TILE COVE BASE
	B-3	BAR	6" QUARRY TILE COVE BASE
	B-4	SEATING AREAS	6" QUARRY TILE COVE BASE
	B-5	EMPLOYEE LOUNGE	6" VINYL COVE BASE
WALL TILE	WT-1	COOK, PREP & DISHWASHING	FRP. OR OTHER CITY APPROVED CLEANABLE SURFACE
	WT-2	RESTROOM WAINSCOTT 4' A.F.F. MIN.	6"x12" CERAMIC TILE
	WT-3	BAR	STAINLESS STEEL, OR OTHER CITY APPROVED CLEANABLE SURFACE
WALL FINISH	W-1	SEATING AREAS & STORAGE	GYP/SUM BOARD
	W-2	SEATING AREA & BAR	EXISTING BRICK EXPOSED 6" AFF TO CEILING, SEALED
	W-3	RESTROOMS, STAIRS, & EMPLOYEE LOUNGE	3" GYP/SUM BOARD, PRIME & PAINT W/ GLOSS FINISH
CEILING	C-1	COOK, PREP & DISHWASHING	FRP. OR OTHER CITY APPROVED CLEANABLE SURFACE
	C-2	RESTROOMS & MISCELLANEOUS	DROP GYP. BD. CEILING
	C-3	SEATING & STORAGE	EXPOSED TO EXISTING CONCRETE CEILING ABOVE
	C-4	BAR	DROP GYP. BD. CLG AT BAR, FINISH W/ CITY APPROVED CLEANABLE SURFACE
	C-5	EMPLOYEE LOUNGE	2X2 LAY-IN CEILING TILE

DOOR SCHEDULE							
Door		Frame		Hardware		Remarks	
No.	Type	Size	Material	Finish	Matl.	Finish	Hardware
103/A	B	34"x 80"x 1 3/4"	Hollow Mtl	Painted	Metal	Painted	180 pivot, closer, bolt
103/B	B	34"x 80"x 1 3/4"	Hollow Mtl	Painted	Metal	Painted	180 pivot, closer, bolt
105/A	A	34"x 80"x 1 3/4"	Hollow Mtl	Painted	Metal	Painted	Push/Pull, closer
106/A	A	34"x 80"x 1 3/4"	Hollow Mtl	Painted	Metal	Painted	Push/Pull, closer
107/A	A	34"x 80"x 1 3/4"	Hollow Mtl	Painted	Metal	Painted	Push/Pull, closer
108/A	A	34"x 80"x 1 3/4"	Hollow Mtl	Painted	Metal	Painted	Push/Pull, closer, bolt
001/A	A	34"x 80"x 1 3/4"	Hollow Mtl	Painted	Metal	Painted	Push/Pull, closer
002/A	B	34"x 80"x 1 3/4"	Hollow Mtl	Painted	Metal	Painted	Push/Pull, closer

GENERAL DOOR SCHEDULE NOTES

- ALL KNOBS TO BE LEVERED HANDLES
- ALL STAIRWELL DOORS TO BE 1 1/2 HOUR CLASS B & AUTOMATIC CLOSING
- ALL GLAZED DOORS AND ANY GLAZED PANEL GREATER THAN 18" WIDE, ADJ. TO ANY DOOR WITH A SILL LESS THAN 24" ABOVE THE FLOOR SHALL HAVE TEMPERED SAFETY GLASS.
- ADA RESTROOM DOOR, PROVIDE CLOSURE, LATCH, 2'-8" CLEAR OPENING, AND PRIVACY



INDEX OF DRAWINGS

- A1 SITE PLAN & NOTES
- A2 FIRST FLOOR PLAN & SCHEDULES
- A3 LOWER LEVEL PLAN & INTERIOR ELEVATIONS
- A4 REFLECTED CEILING PLANS

GENERAL NOTES

- PROVIDE CONTINUOUS WOOD BLOCKING ABOVE ALL EQUIPMENT IN KITCHEN FOR WIRE SHELVING.
- PROVIDE CONTINUOUS WOOD BLOCKING FOR ALL CABINETS, MOLDINGS, TOWEL BARS, RAILINGS, DOOR STOPS, ETC.
- DRYWALL CONTRACTOR TO PROVIDE ACCESS PANELS AS REQUIRED FOR EASY ACCESS TO MISCELLANEOUS VALVES.
- ALL STAIR HANDRAILS TO BE MIN. 2'-10" ABOVE TREAD.
- ALL RISERS TO BE MIN. 8" HIGH AND TREADS MIN 9" WIDE EXCLUDING NOSING.



1 PERMIT	11.9.15
----------	---------

CHIYA CAFE
RESTAURANT BUILD-OUT OF
EXISTING 1ST FLOOR AND BASEMENT
2760 NORTH MILWAUKEE
CHICAGO, ILLINOIS 60647

nine NINE 4 NINE
LEIGH ANN HEUSDENS
349 North Wolcott Ave. Suite 2R
Chicago, Illinois 60622
Telephone: 312.936.9866
Facsimile: 773.345.3635
E-mail: Lheusdens@mac.com

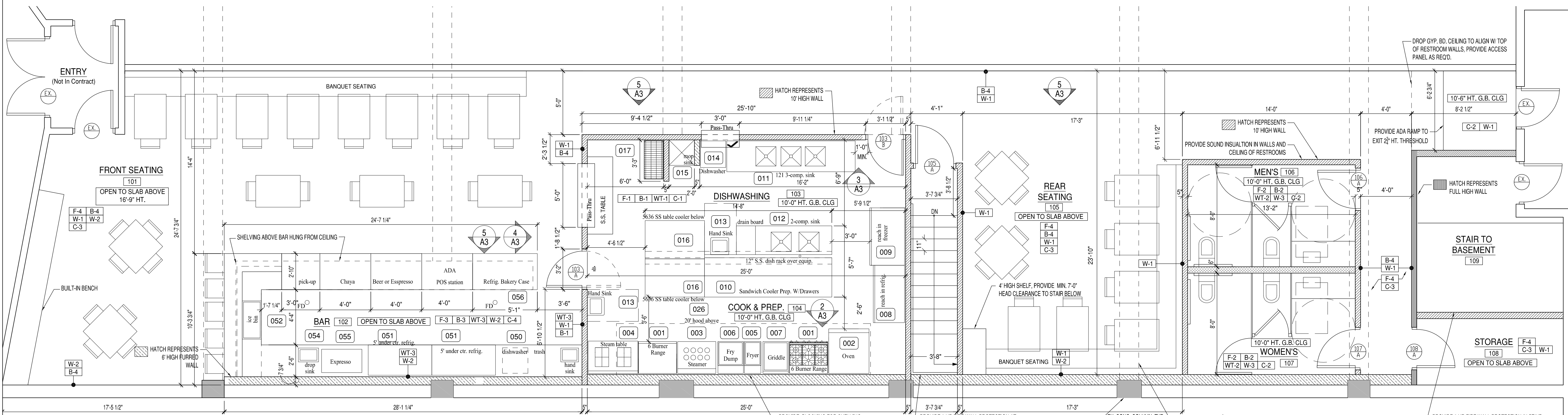
FIRST FLOOR PLANS & NOTES

Scale: As Noted

Drawn By: Sheet Number:

Checked By: A2

Date:



1 1ST FLOOR PLAN
A2 Scale: NTS