

FOR LEASE

450 to 2,190 SF



202 WEST COMSTOCK

DALLAS, TX 77208

*Within the On The Road
Garage Service Center*



PROPERTY HIGHLIGHTS

450 to 2,190 SF of Contiguous Space Available

Auto Bays Available: One (1) to Six (6)

Average Size Bay: 25' x 30'

Garage Doors: 10' x 10'

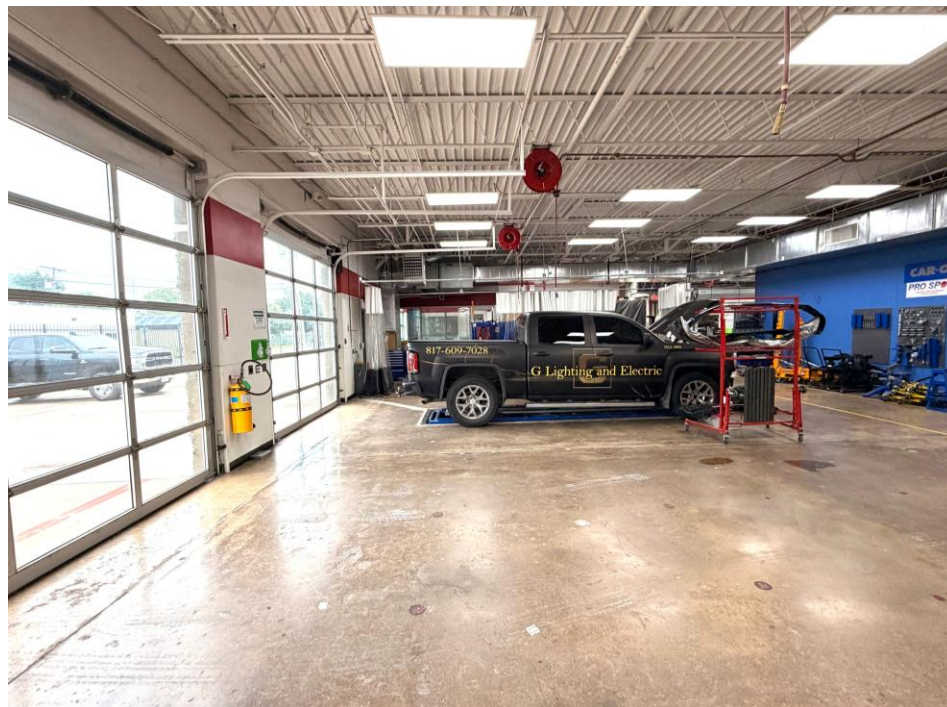
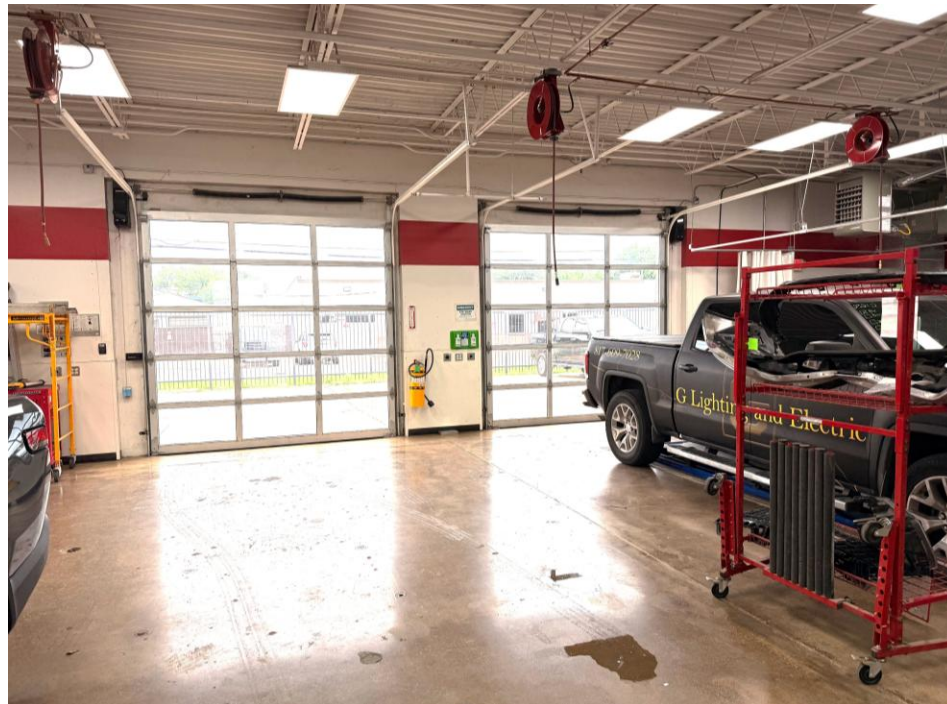
HVAC Workspaces

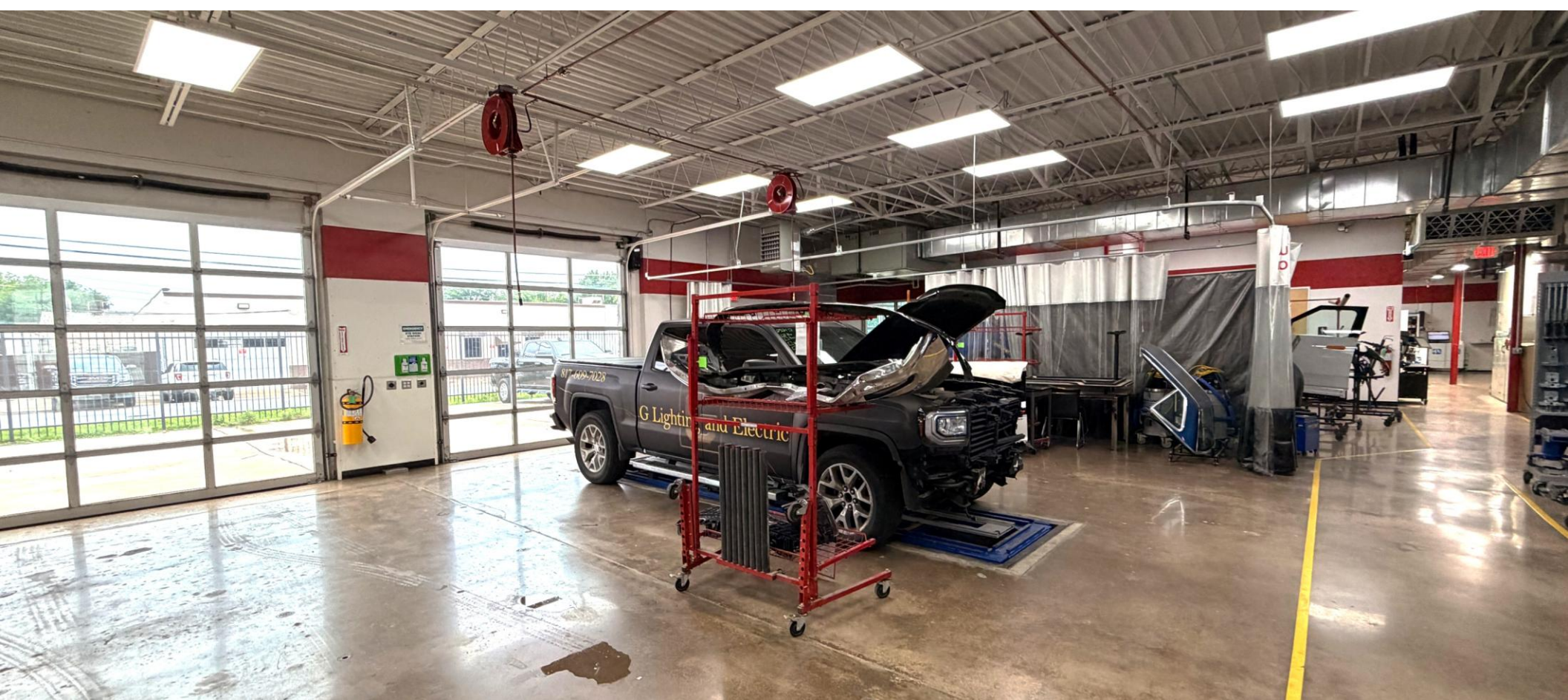
Secured Parking Area

Potential Use of Automotive Services

Common Customer Lobby / Waiting Area

Accessible from I-30 and North Beckley Avenue





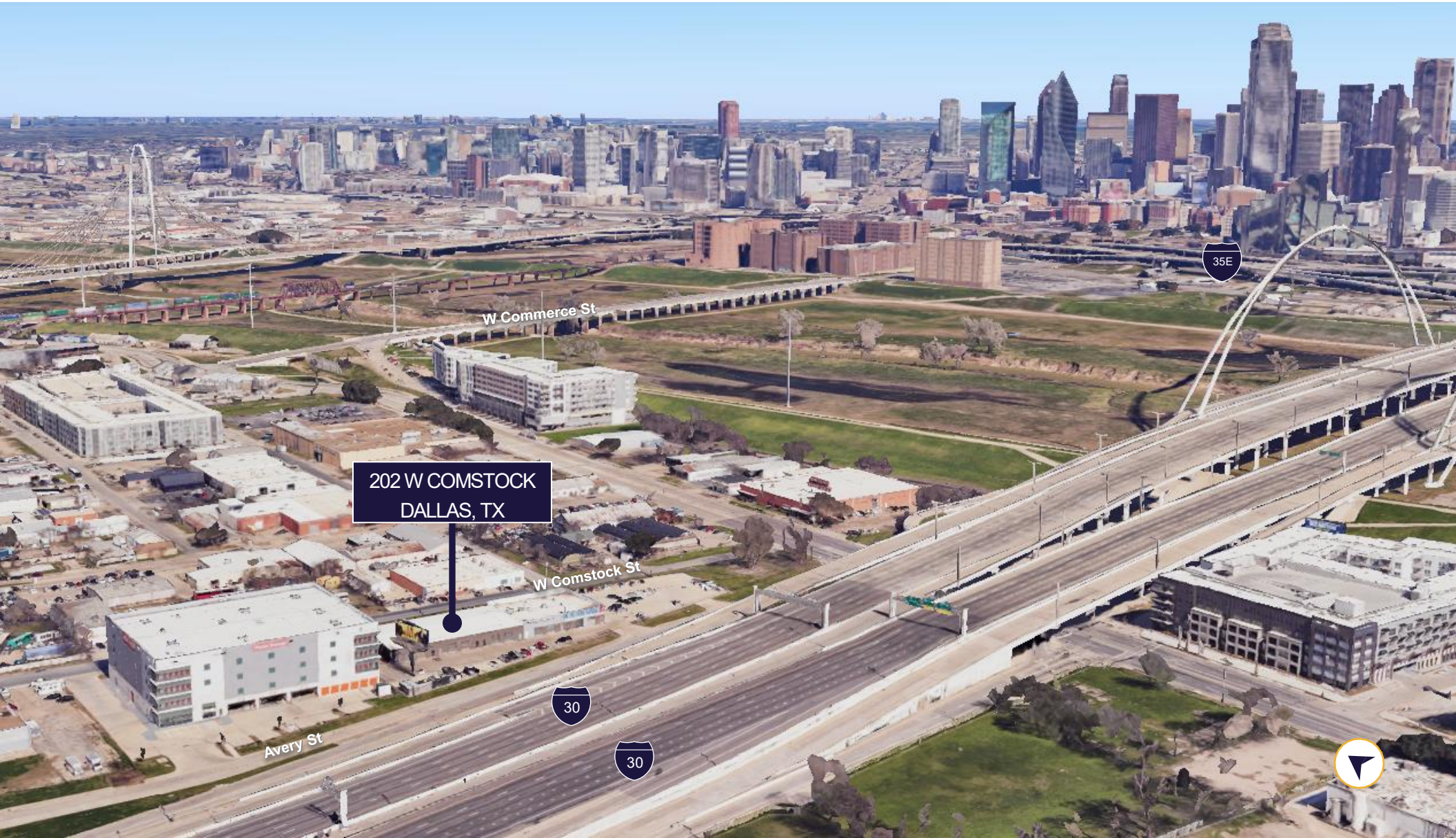
SITE PLAN

450 TO 2,190 SF

SPACES AVAILABLE ARE SHOWN IN BLUE



LOCATION MAP



CONTACT INFORMATION

JAY R. LUCAS, CCIM

jay.lucas@cushwake.com

+1 972 663 9705

