



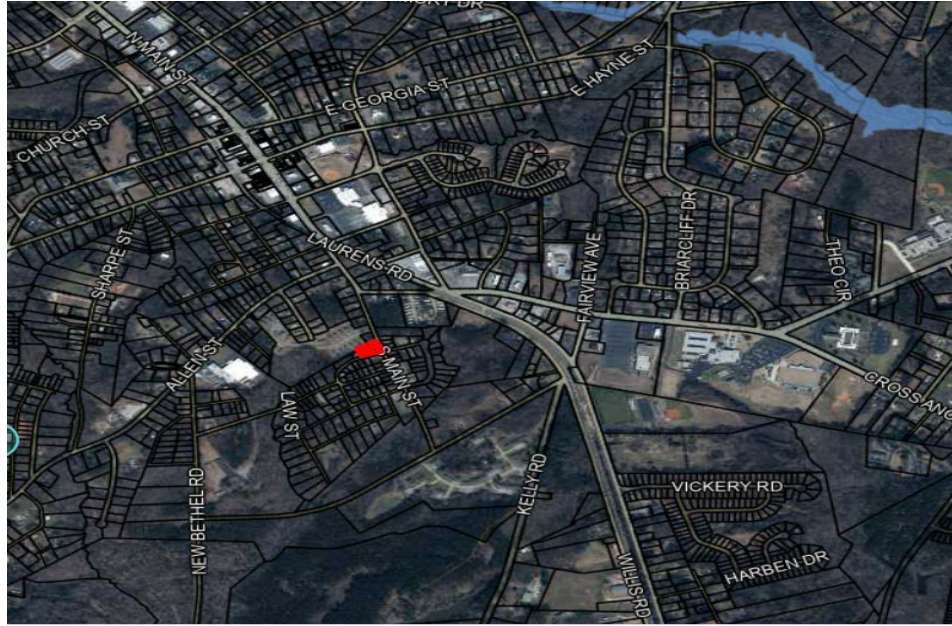
## Parcel for Residential Development in Woodruff

Cannon Street  
Woodruff, SC 29388

**PRESENTED BY:**

**DOUGLAS PETERSON**  
O: 323.632.1979  
Douglas@DivineGroup.us

# PROPERTY SUMMARY



## OFFERING SUMMARY

<b>SALE PRICE:</b>	\$35,000
<b>LOT SIZE:</b>	+/-0.14 Acre
<b>PRICE / ACRE:</b>	\$250,000
<b>MARKET:</b>	Greenville/Spartanburg
<b>SUBMARKET:</b>	Lower Spartanburg County
<b>APN:</b>	4-32-12-021.03

## PROPERTY OVERVIEW

- \* +/- 0.14 Acre for Residential Development in Woodruff
- \* Zoned for a Residential uses
- \* The Woodruff area expects up to 9,000 new home
- \* Only 1/4 mile from Downtown Woodruff
- \* Water, Electric & Sewer are available

**DOUGLAS PETERSON**

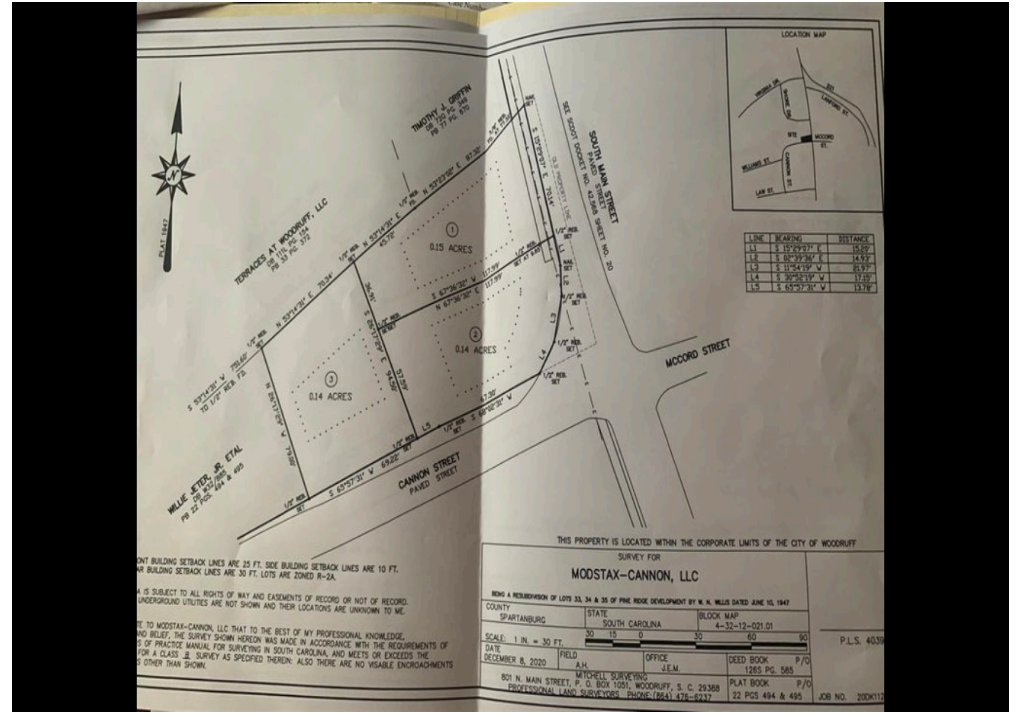
O: 323.632.1979

Douglas.DivineGroup.us

# ADDITIONAL PHOTOS



AERIAL VIEW



PROPERTY BOUNDARIES

**DOUGLAS PETERSON**  
 O: 323.632.1979  
 Douglas@DivineGroup.us

Cannon Street | Woodruff, SC 29388