



FOR LEASE

77734 Country Club Drive, Ste. I
Palm Desert, CA 92211



Offering Summary

Property Type:	Industrial
Lease Rate:	\$1.50 SF/month (MG)
Available SF:	1,465 SF

Property Overview

This office condominium features a large open concept showroom and office area. This unit features a kitchenette and nicely appointed private restroom. The office space has it's own HVAC unit, and separate electrical meter.

The warehouse area features a 12' roll-up door and evaporative cooler.

High speed internet is available through Frontier FIOS, and electrical service is available through Southern California Edison.

Location Overview

Located in the Country Club Business Park of Palm Desert, this unit is just South of I-10 and West of Washington Street.

Matthew V. Johnson
760.779.4000 (Direct)
matt@johnsoncommercial.net
CalDRE #00927239

760.779.4000
72000 Magnesia Falls Drive
Rancho Mirage, CA 92270
www.johnsoncommercial.net

Johnson Commercial Copyright 2017. No warranty or representation, express or implied, is made to the accuracy or completeness of the information contained herein, and same is submitted subject to errors, omissions, change of price, rental or other conditions, withdrawal without notice, and to any special listing conditions imposed by the property owner(s). As applicable, we make no representation as to the condition of the property (or properties) in question.



FOR LEASE

77734 Country Club Drive, Ste. 1
Palm Desert, CA 92211



Matthew V. Johnson
760.779.4000 (Direct)
matt@johnsoncommercial.net
CalDRE #00927239

760.779.4000
72000 Magnesia Falls Drive
Rancho Mirage, CA 92270
www.johnsoncommercial.net

Johnson Commercial Copyright 2017. No warranty or representation, express or implied, is made to the accuracy or completeness of the information contained herein, and same is submitted subject to errors, omissions, change of price, rental or other conditions, withdrawal without notice, and to any special listing conditions imposed by the property owner(s). As applicable, we make no representation as to the condition of the property (or properties) in question.



FOR LEASE

77734 Country Club Drive, Ste. 1
Palm Desert, CA 92211



Matthew V. Johnson
760.779.4000 (Direct)
matt@johnsoncommercial.net
CalDRE #00927239

760.779.4000
72000 Magnesia Falls Drive
Rancho Mirage, CA 92270
www.johnsoncommercial.net

Johnson Commercial Copyright 2017. No warranty or representation, express or implied, is made to the accuracy or completeness of the information contained herein, and same is submitted subject to errors, omissions, change of price, rental or other conditions, withdrawal without notice, and to any special listing conditions imposed by the property owner(s). As applicable, we make no representation as to the condition of the property (or properties) in question.

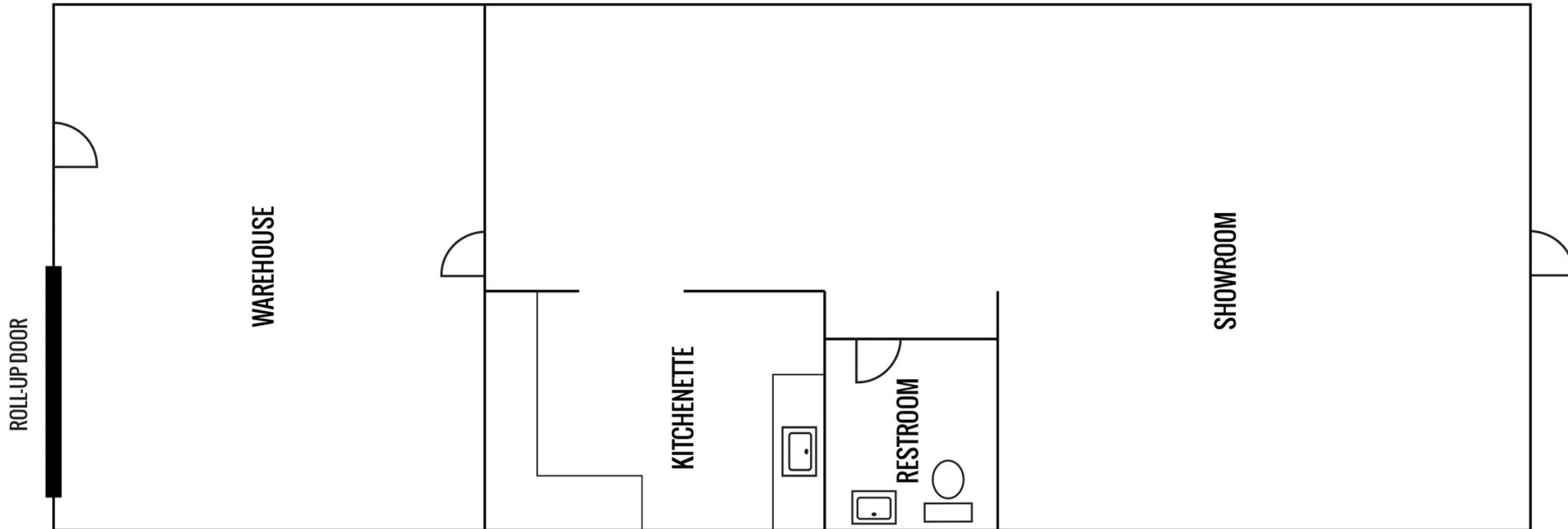


JOHNSON
COMMERCIAL REAL ESTATE

FOR LEASE

77734 Country Club Drive, Ste. I
Palm Desert, CA 92211

77-734 COUNTRY CLUB DRIVE, SUITE I



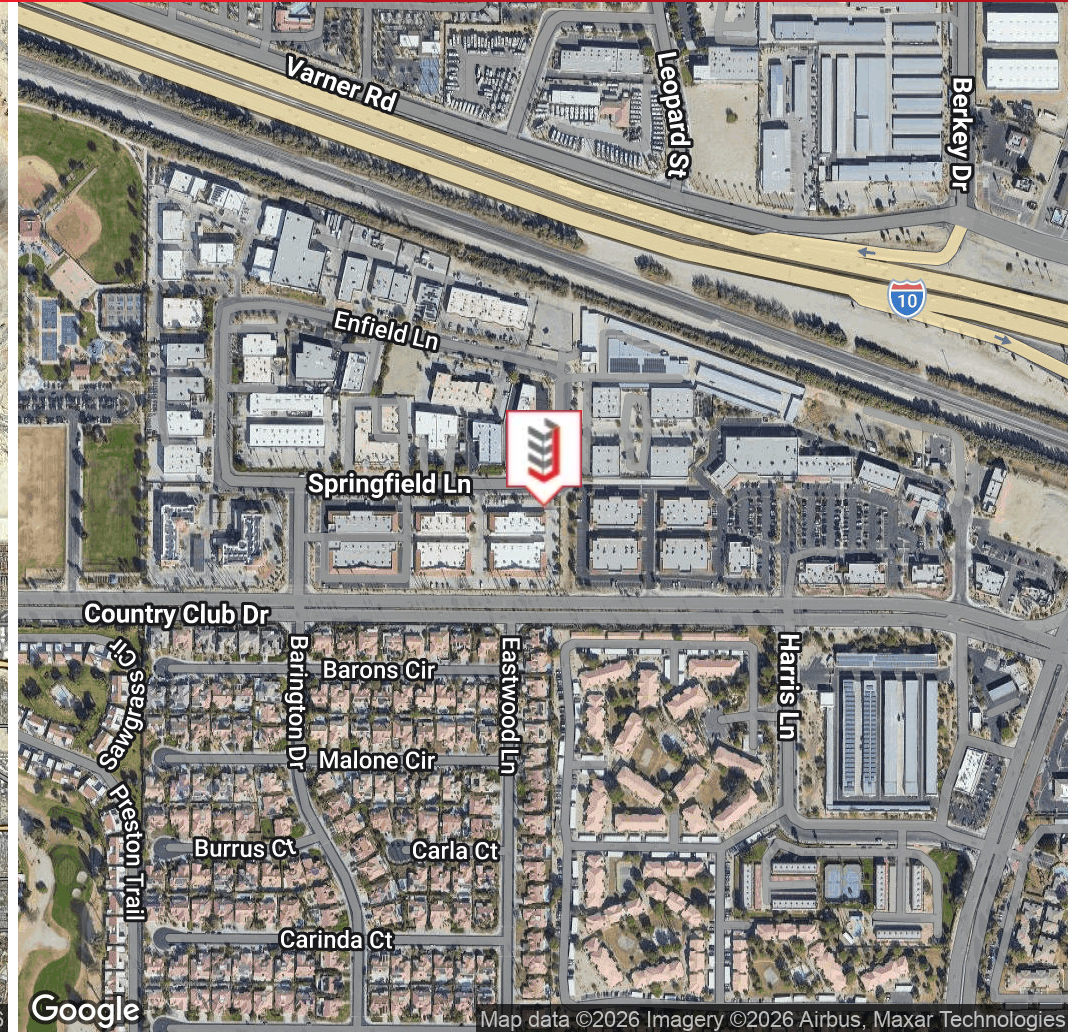
Matthew V. Johnson
760.779.4000 (Direct)
matt@johnsoncommercial.net
CalDRE #00927239

760.779.4000
72000 Magnesia Falls Drive
Rancho Mirage, CA 92270
www.johnsoncommercial.net

Johnson Commercial Copyright 2017. No warranty or representation, express or implied, is made to the accuracy or completeness of the information contained herein, and same is submitted subject to errors, omissions, change of price, rental or other conditions, withdrawal without notice, and to any special listing conditions imposed by the property owner(s). As applicable, we make no representation as to the condition of the property (or properties) in question.

FOR LEASE

77734 Country Club Drive, Ste. I
Palm Desert, CA 92211



Matthew V. Johnson
760.779.4000 (Direct)
matt@johnsoncommercial.net
CalDRE #00927239

760.779.4000
72000 Magnesia Falls Drive
Rancho Mirage, CA 92270
www.johnsoncommercial.net