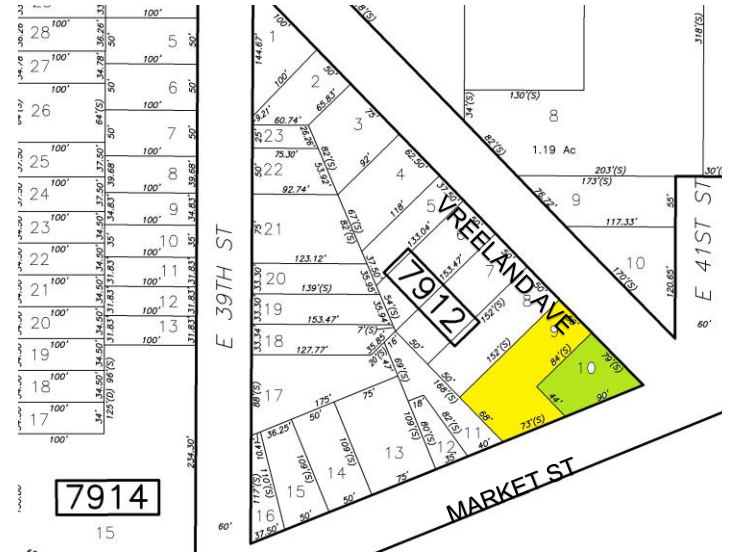
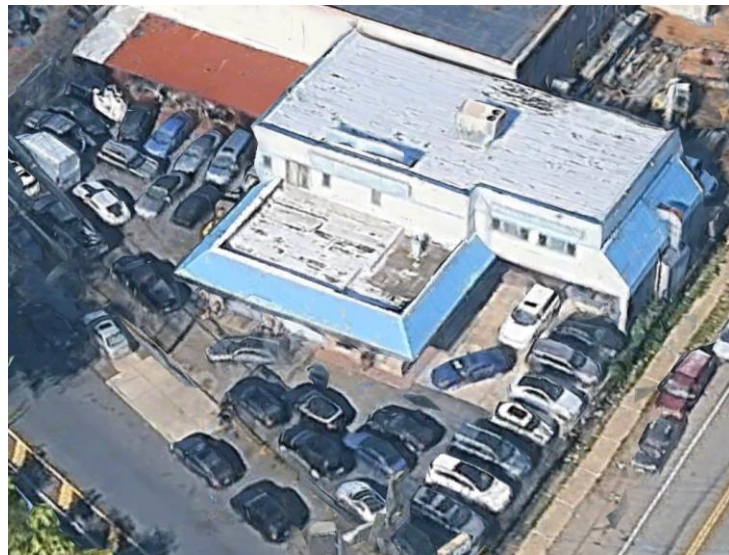
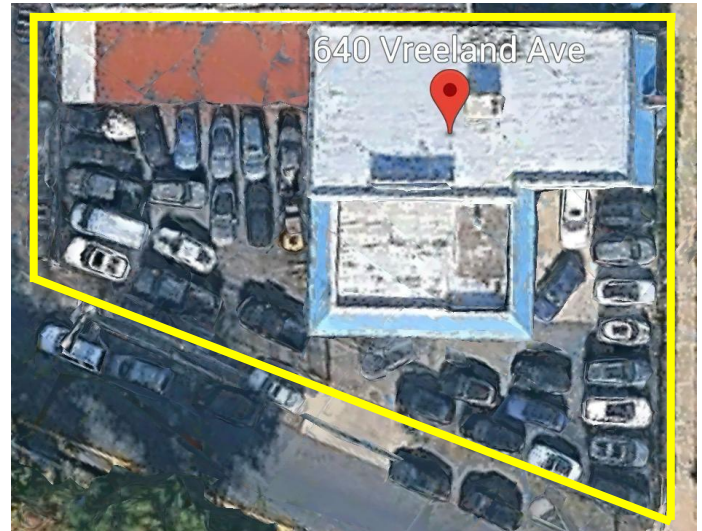


# FOR SALE PRIME CORNER AUTOMOTIVE PROPERTY



## 1039 Market Street & 340 Vreeland Avenue, Paterson New Jersey

- Two (2) Lots – 15,681 Sqft / Approx. 0.34 Acres Total.
- Corner Location – High visibility  
2 Story 7500Sqft Building - 1st Fl 4400Sqft / 2nd Fl 3100Sqft
- Gated Property with Parking
- Taxes: \$24,000

Price: \$1,900,000

### Licenses Included:

- ✓ Auto Dealer Lot
- ✓ Body Shop
- ✓ Mechanic



**Nicholas Tselepis**  
BROKER/OWNER  
Cell: (973) 725-3778



"The Established Leader"  
Office: (973) 340-1202  
1624 Main Ave. Clifton NJ. 07011

**Alexandra Constandinou**  
BROKER SALESPERSON  
Cell: (973) 634-8853

