

**3735**

**BOARD ROAD**

**YORK, PENNSYLVANIA**

**FOR LEASE**

**INDUSTRIAL**



**43,320** SF

**AVAILABLE**

**KINSLEY**  
PROPERTIES

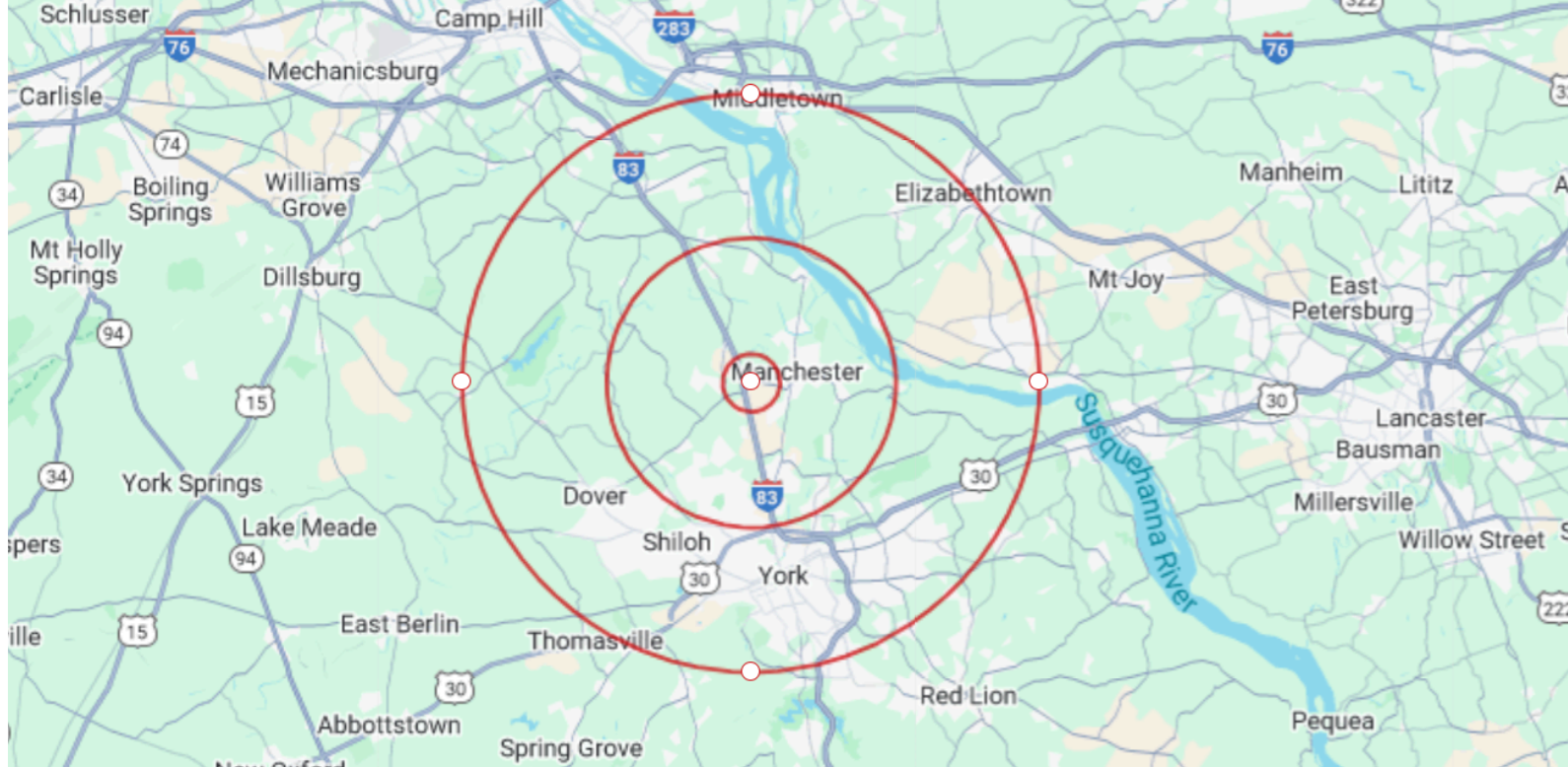
**Contact:**

Dan Hawks  
(717)-741-8707  
dhawks@kinsleyproperties.com

Joe Caughy  
(717)-741-8365  
jcaughy@kinsleyproperties.com

**Building Specifications:**

<b>Township</b>	<b>Manchester</b>	<b>Dock Doors</b>	<b>4</b>
<b>Zoning</b>	<b>General Warehouse</b>	<b>Drive in Door</b>	<b>3</b>
<b>Tenancy</b>	<b>SINGLE</b>	<b>Car Parking</b>	<b>ON SITE</b>
<b>Column Spacing</b>	<b>31'6" X 50'</b>	<b>Roof</b>	<b>EPDM</b>
<b>Building Area</b>	<b>43,320</b>	<b>Gated Trailer Yard</b>	<b>YES</b>
<b>Clear Height</b>	<b>18'</b>	<b>Fire Protection</b>	<b>WET</b>



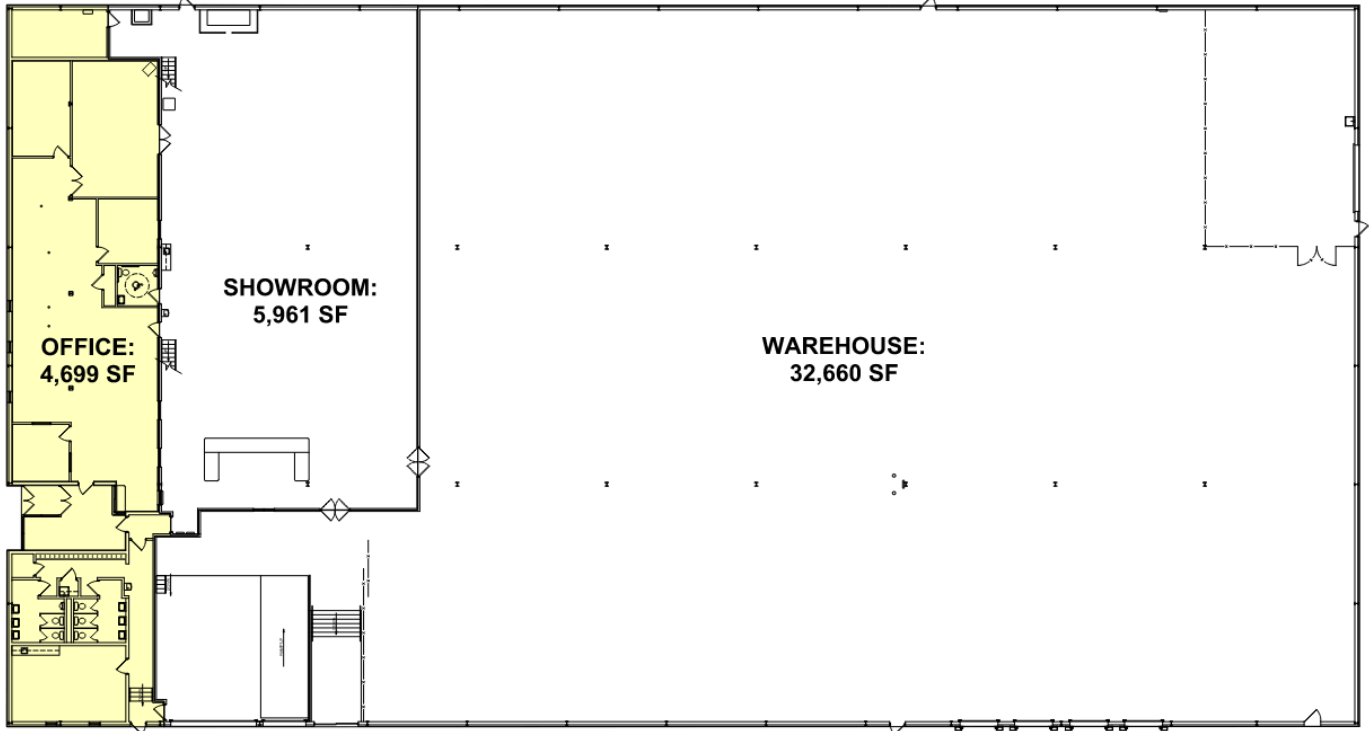
### Distances to Cities:

Harrisburg, PA	20 miles	27 min
Baltimore, MD	62 miles	1 hr 6 min
Philadelphia, PA	118 miles	2 hrs. 9 min
New York, NY	189 miles	3 hrs. 30 min

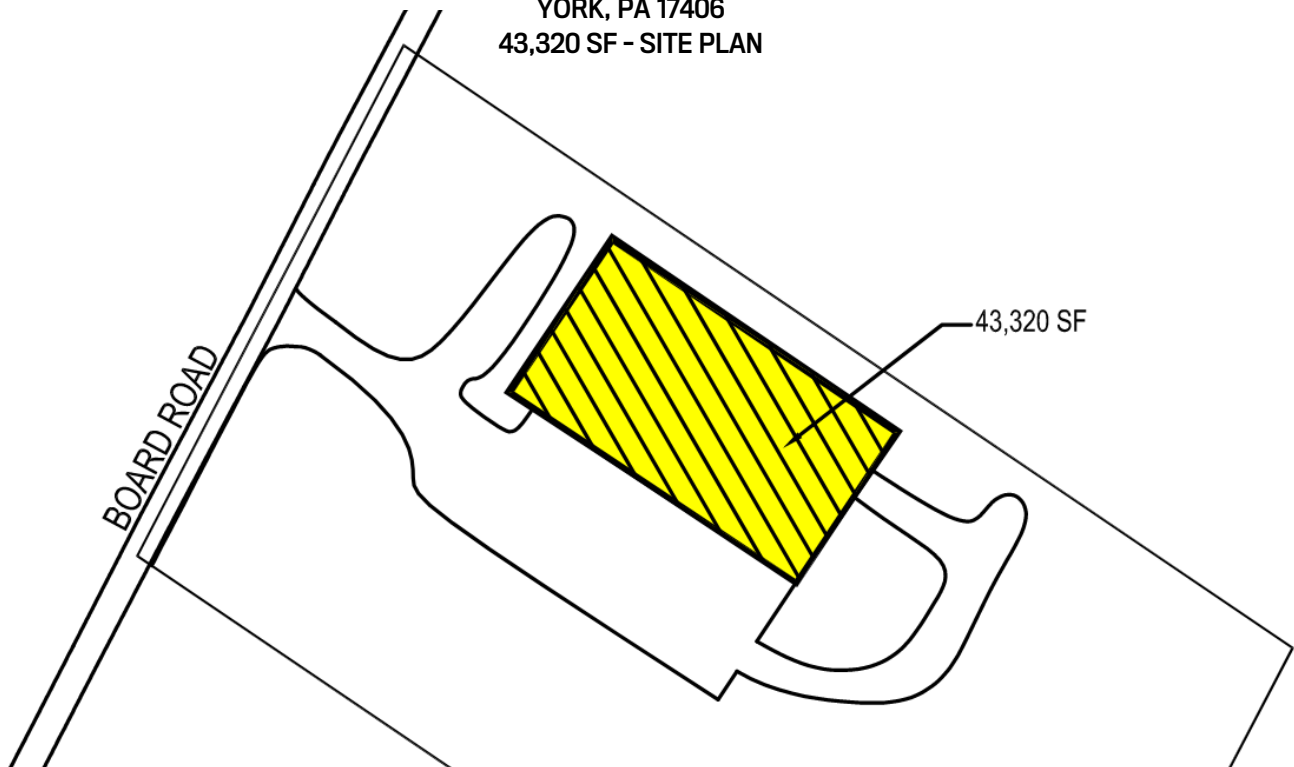
### Labor Statistics:

	1 Mile:	5 Miles:	10 Miles:
Total Population	1,508	76,294	264,556
Labor Population	4,251	39,350	122,975
Median Household Income	91,586	70,177	70,679

3735 BOARD RD  
YORK, PA 17406  
43,320 SF - FLOOR PLAN  
"B" BUSINESS



3735 BOARD RD  
YORK, PA 17406  
43,320 SF - SITE PLAN



# **KINSLEY** PROPERTIES

## **About Kinsley Properties**

Kinsley Properties is a privately held real estate development and management company. We develop new projects from the ground up and also acquire existing properties to hold long-term in our real estate investment portfolio. We develop and acquire different types of real estate in partnership with others or to be wholly owned. We have the capability, resources, and staff in order to facilitate and guide our clients through a successful real estate process. We work together with our clients in order to complete the entire real estate process from the beginning to the end. Starting from acquisition to development and design, construction, leasing, and asset management, we take pride in our product and work to provide all of these services in connection with the properties that are held in our portfolio. We have over 50 years of experience developing and managing a diverse portfolio of various property types across the mid-Atlantic region. We have a goal to provide solutions and high-quality customer service in order to ensure the success and growth of our clients, tenants, and partners. We believe in long-term relationships, collaboration, and teamwork because we are all in this together and we want to do what we can to ensure the entire team's success.

### **Mission:**

**WE PROVIDE REAL ESTATE SOLUTIONS THAT CREATE LASTING RELATIONSHIPS AND CLIENT SUCCESS.**

### **Vision:**

**BE THE MOST RESOURCEFUL REAL ESTATE EXPERT.**

### **Values:**

**OUR REPUTATION IS BUILT ON INTEGRITY.  
WE DEVELOP PEOPLE.  
WE'RE IN IT WITH YOU.  
SHARED SUCCESS.  
ALWAYS BE RESPONSIBLE.**



**DAN HAWKS**

Director of Leasing

[dhawks@kinsleyproperties.com](mailto:dhawks@kinsleyproperties.com)

717-741-8707



**JOE CAUGHY**

Leasing & Marketing Associate

[jcaughy@kinsleyproperties.com](mailto:jcaughy@kinsleyproperties.com)

717-741-8365

### **ADDRESS:**

6259 Reynolds Mill Road  
Seven Valleys, PA 17360