

**AVISON
YOUNG**



FOR LEASE

Professional showroom/office space in the Design District

1260 Castlefield Avenue, Unit 2
North York, ON

Tom Clancy

Broker, Principal
905 283 2388
tom.clancy@avisonyoung.com

Tessa Compagno

Sales Representative
905 283 2342
tessa.compagno@avisonyoung.com

Noah Frankel

Sales Representative
905 283 2379
noah.frankel@avisonyoung.com

FOR LEASE

1260

Castlefield Avenue,
Unit 2
North York, ON

Property details

TOTAL AVAILABLE AREA

4,960 sf

CLEAR HEIGHT

12'

ZONING

PE

POSSESSION

30 days

ASKING NET RENT

\$26.95 psf

ADDITIONAL RENT(2025)

\$4.23 psf

Features



Direct exposure on busy Castlefield Ave



Plenty of natural light



Polished concrete floors



Abundance of parking



Easy access to public transportation

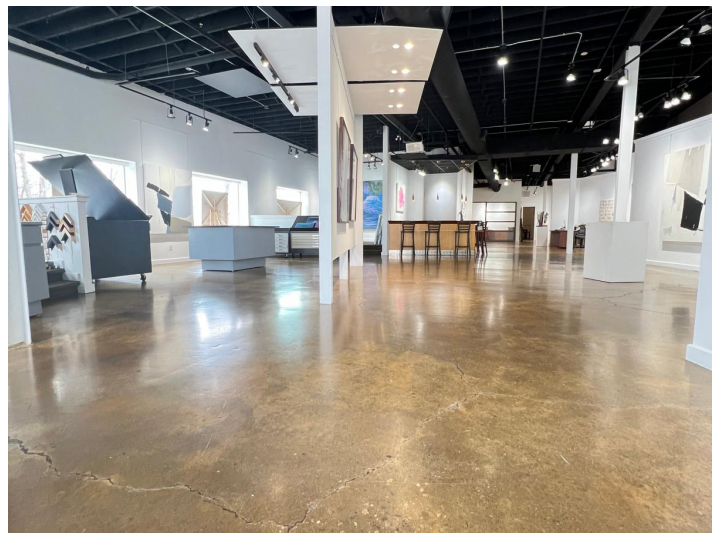
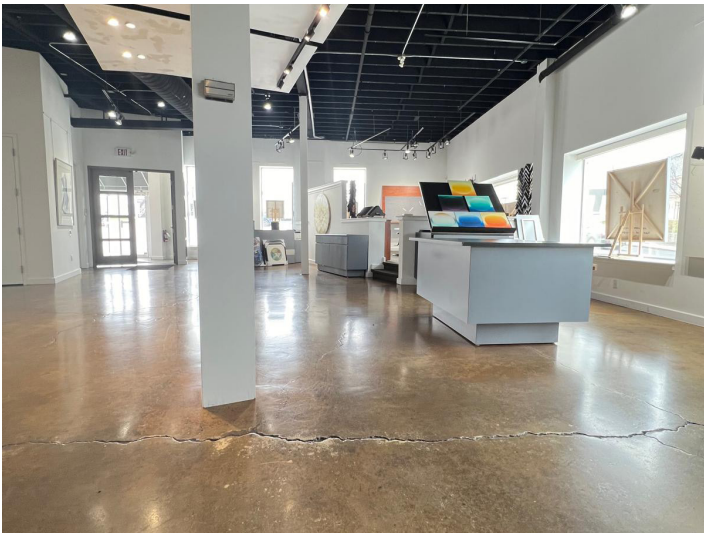
1260 Castlefield Avenue, Unit 2
North York, ON

FLOOR PLAN

1260 Castlefield Avenue, Unit 2

North York, ON

PHOTOS

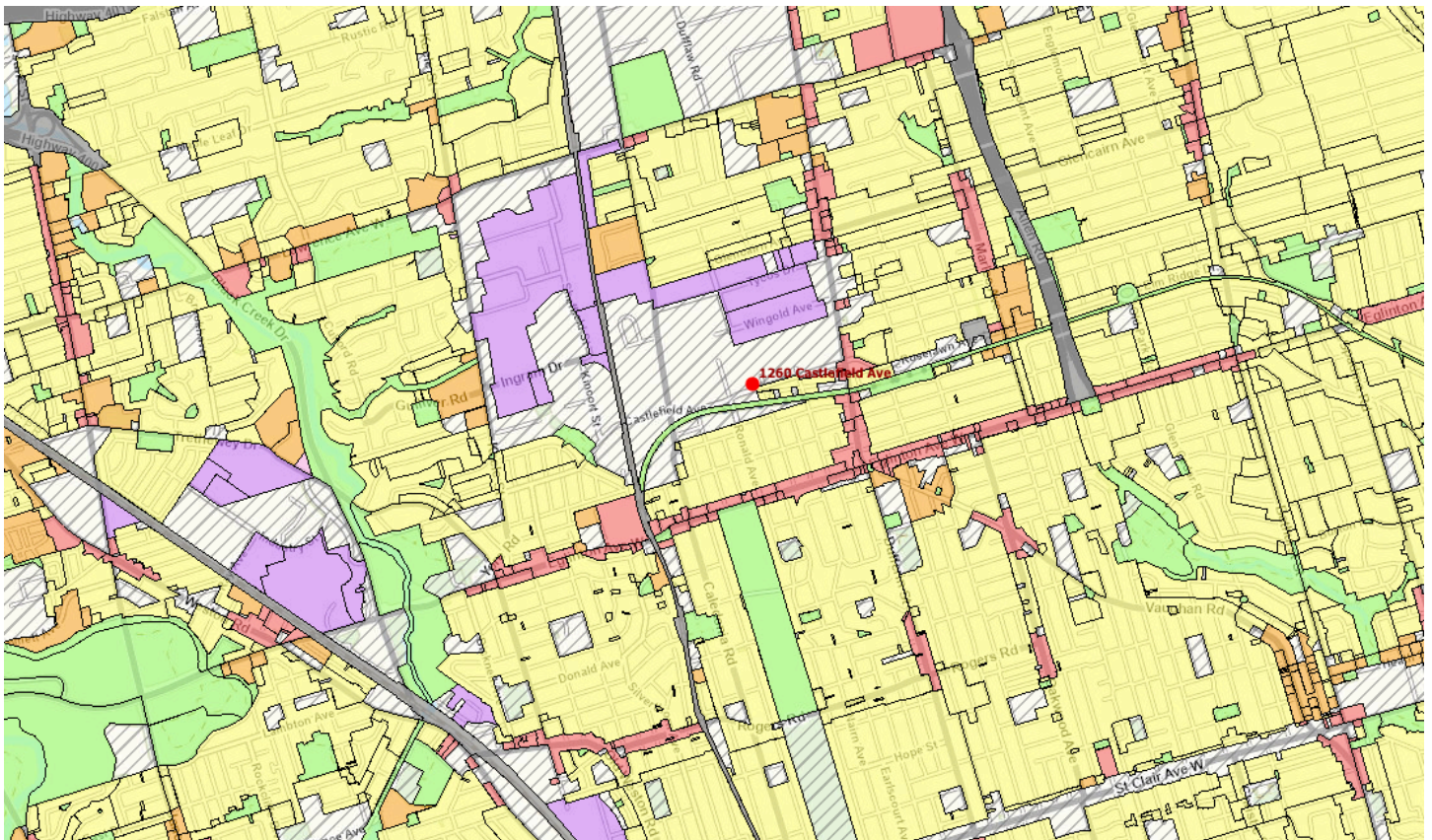


PERMITTED USES

- | | | | |
|---|---|--|---|
| <ul style="list-style-type: none"> • Ambulance Depot • Animal Shelter • Artist Studio • Automated Banking Machine • Bindery • Building Supply Yards • Carpenter's Shop • Cold Storage • Contractor's Establishment • Custom Workshop • Dry Cleaning or Laundry Plant | <ul style="list-style-type: none"> • Financial Institution • Fire Hall • Industrial Sales and Service Use • Kennel • Laboratory • Office • Park • Performing Arts Studio • Pet Services • Police Station • Printing Establishment • Production Studio | <ul style="list-style-type: none"> • Public Works Yard • Service Shop • Software Development and Processing • Warehouse • Wholesaling Use • Retail and/or showroom uses, accessory to an industrial or office use, up to a combined total gross floor area equal to 25% of the total gross floor area of the primary use and | <ul style="list-style-type: none"> the accessory use. design centre; • Business service establishments; • Restaurant, restaurant-licensed, snack bar, take-out eating establishment, banquet • Recreational uses • Day nursery |
|---|---|--|---|

Permitted Uses With Conditions

- | | | | |
|--|--|---|--|
| <ul style="list-style-type: none"> • Cogeneration Energy (26) • Crematorium (33) • Drive Through Facility (5,21) • Eating Establishment (1,19,30) • Marihuana production facility (2) | <ul style="list-style-type: none"> • Metal Factory involving Forging and Stamping (25) • Outdoor Patio (9) • Open Storage (10) • Public Utility (27,29) • Recovery Facility (8) • Recreation Use (7) | <ul style="list-style-type: none"> • Renewable Energy (26) • Retail Service (3) • Retail Store (4,30) • Shipping Terminal (11) • Take-out Eating Establishment (1,30) • Transportation Use (28) | <ul style="list-style-type: none"> • Vehicle Depot (6) • Vehicle Fuel Station (16,30) • Vehicle Repair Shop (23) • Vehicle Service Shop (17,31) • Vehicle Washing Establishment |
|--|--|---|--|



Amenities & Transit Options

2
minutes
1.0 km to
Hwy 403

4
minutes
4.0 km to
Hwy QEW

4
minutes
4.3 km to
Hwy 407

9
minutes
13.9 km to
Hwy 401

13
minutes
19.9 km to
Hwy 410



Amenities within 5KM



610

Restaurants



1,727

Retail



40

Gas Stations



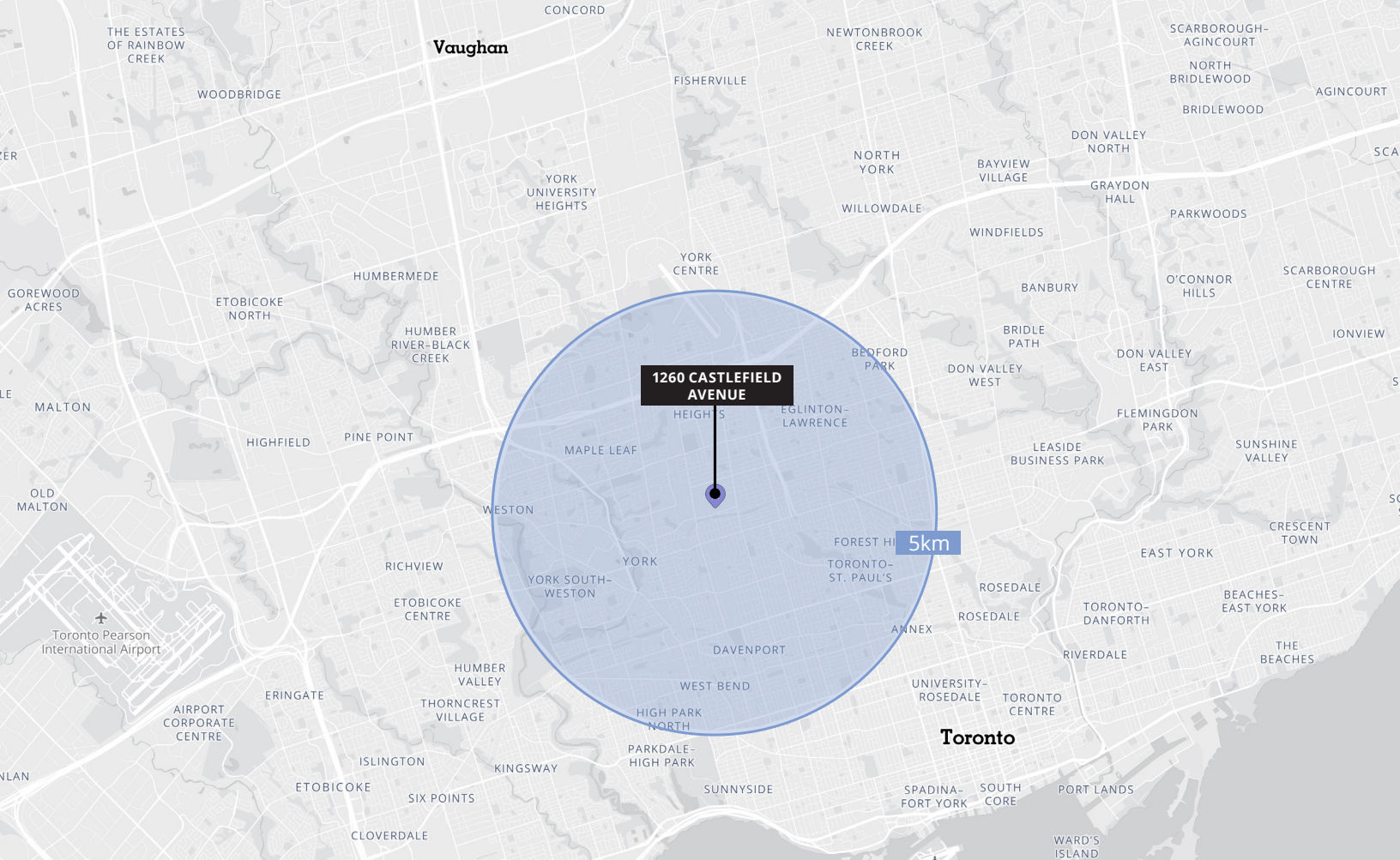
100

Banks



44

Fitness Centres



5 km Radius



Total Population
492,435



Households
206,544



Household Income
\$143,347



Families
131,235



Median Age
40.4

FOR LEASE

1260 Castlefield Aveue
North York, ON

Tom Clancy

Broker, Principal
905 283 2388
tom.clancy@avisonyoung.com

Tessa Compagno

Sales Representative
905 283 2342
tessa.compagno@avisonyoung.com

Noah Frankel

Sales Representative
905 283 2379
noah.frankel@avisonyoung.com

Avison Young Commercial Real Estate Services, LP, Brokerage

77 City Centre Drive, Suite 301, Mississauga, Ontario L5B 1M5

Office 905 712 2100 Fax 905 712 2937 avisonyoung.ca

© 2025. Avison Young Commercial Real Estate Services, LP, Brokerage. Information contained herein was obtained from sources deemed reliable and, while thought to be correct, have not been verified. Avison Young does not guarantee the accuracy or completeness of the information presented, nor assumes any responsibility or liability for any errors or omissions therein.
© Mapbox, © OpenStreetMap

