



COMMERCIAL

PROPERTY FOR SALE

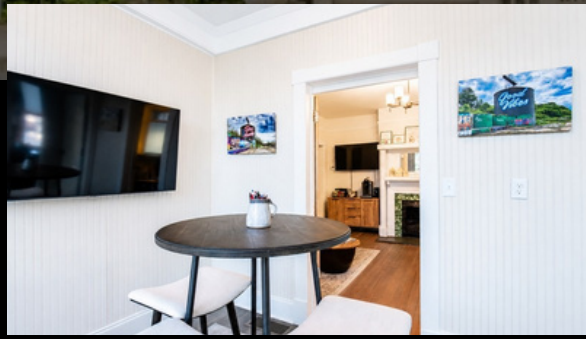
West Asheville Multi-Use
264 Haywood Road, Asheville NC 28806

MORE INFO

(828) 301-5069
Trevor Baker
Patton Allen Real Estate
Trevor@pattonallenre.com

LISTED AT
\$1,175,000





PROPERTY GALLERY



TARGET MARKET SUMMARY

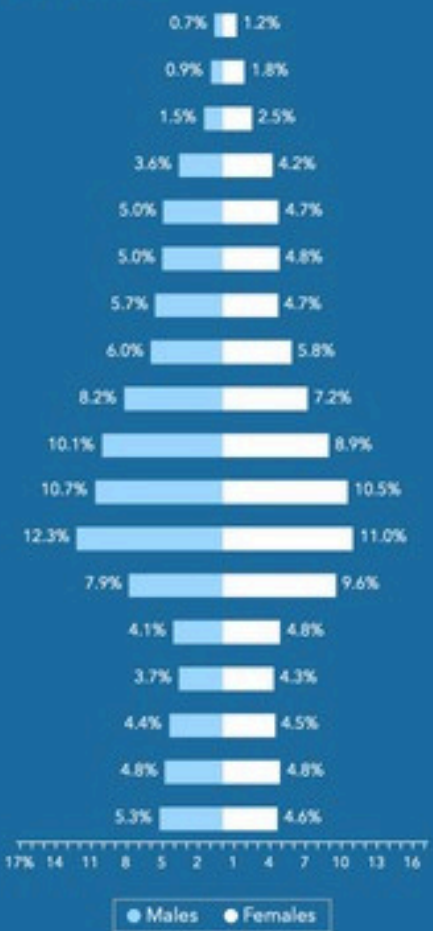
264 Haywood Rd, Asheville, North Carolina, 28806 3

Drive time band of 0 - 5 minutes

Key Facts



Age Pyramid



Annual Lifestyle Spending



Tapestry

Top 3 segments by household count



[View comparison table](#)

DEMOGRAPHIC SUMMARY

264 Haywood Rd, Asheville, North Carolina, 28806 3

Drive time band of 0 - 5 minutes



KEY FACTS

12,910

Population



5,939

Households

38.3

Median Age

\$56,672

Median Disposable Income

EDUCATION

9.3%

No High School Diploma



16.2%

High School Graduate



14.1%

Some College/
Associate's Degree



60.4%

Bachelor's/Grad/
Prof Degree

INCOME



\$70,499

Median Household Income



\$45,736

Per Capita Income



\$66,798

Median Net Worth

HOUSEHOLD INCOME



EMPLOYMENT



White Collar

72.8%



Blue Collar

11.1%



Services

18.0%

9.3%

Unemployment Rate

Source: This infographic contains data provided by Esri (2025, 2030). © 2026 Esri





PROPERTY OVERVIEW

Property Type

Office / Retail / Live & Work/ Multi-Use

Total SF Available

2,643

Sale Price

\$1,175,000

Lot Size

0.25 Acres

Year Built

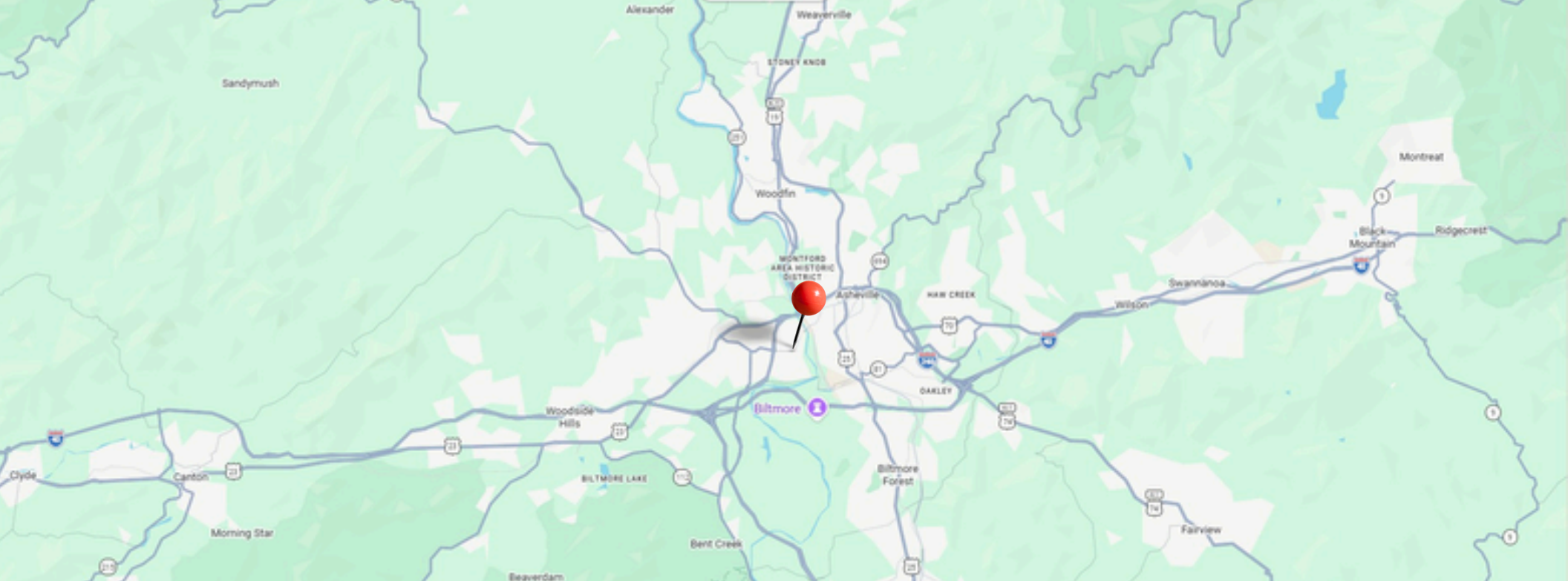
1915

Zoning

HR-2: EXPN

DESCRIPTION

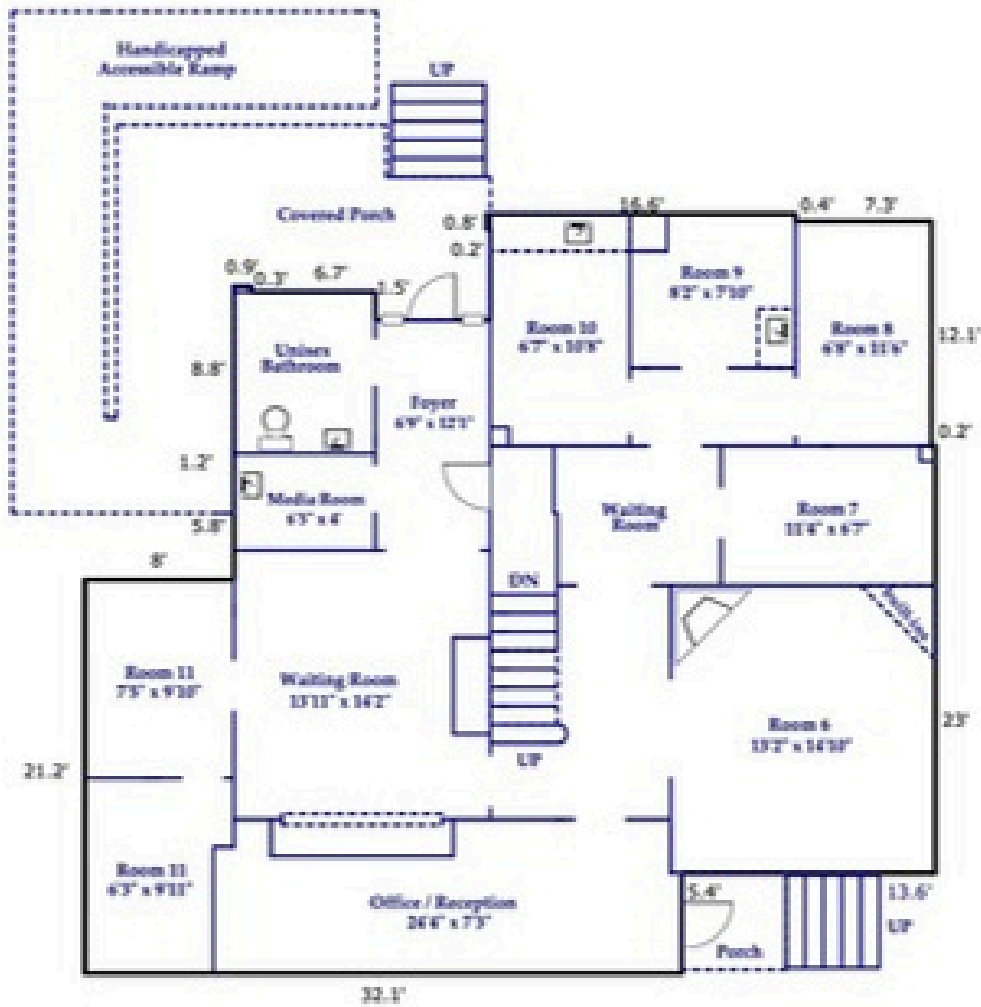
Positioned on Beacham's Curve along Asheville's vibrant West Asheville corridor, 264 Haywood Road benefits from strong neighborhood visibility and direct access to one of the city's most active retail and lifestyle districts. The property is surrounded by established restaurants, breweries, boutiques, neighborhood retail, and residential density. Beautifully converted historic home with 11 private offices of various sizes and 12 off-street parking spaces.



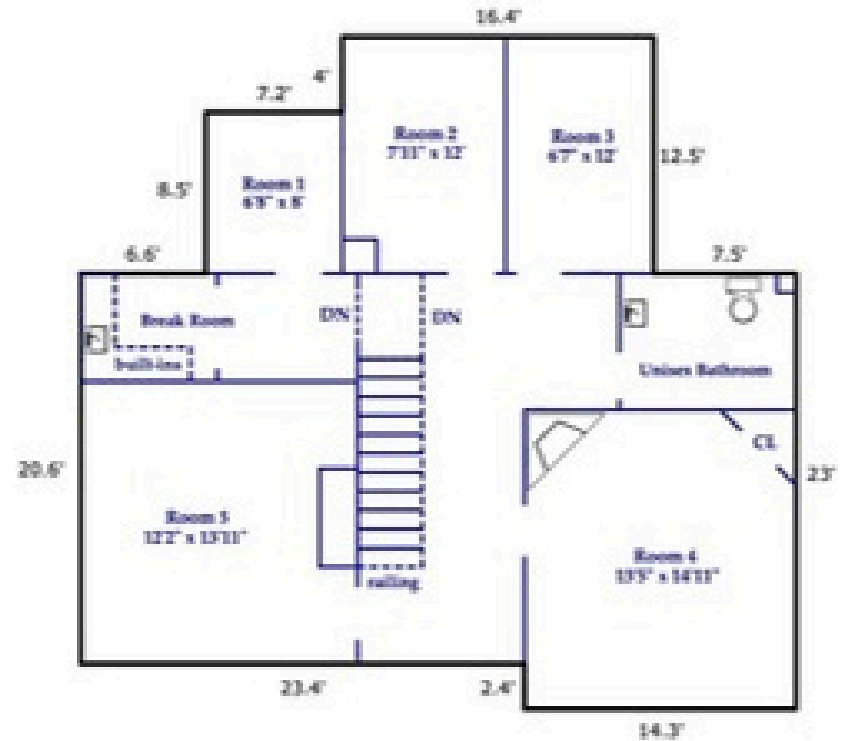
LOCATION HIGHLIGHTS



- Prime location & strong visibility
- Neighborhood retail corridor
- Public transit accessible
- Adjacent dining & amenities
- 7,400 - 13,200 AADT



FIRST FLOOR
1566 Square Feet



SECOND FLOOR
1077 Square Feet

FLOOR PLAN

MORE INFORMATION

Trevor Baker

(828) 301-5069

Trevor@pattonallenre.com



The information contained herein has been obtained from sources deemed reliable. No warranty or representation is made as to the accuracy thereof.

