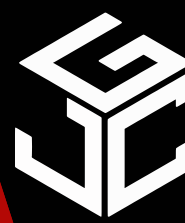


FOR LEASE

480 24th Ave NW,
Suite 142-144
Norman, OK 73069



Johnson

Commercial Group

JohnsonCommercialGroup.com



Offering Summary

Suite SF: 2,560 SF

Lease Rate: \$18 SF/YR

NNN Rate: \$4.50 SF/YR

Zoning: C-2

Year Built: 2010

Traffic Count: 18,451

Building Size: 85,726 SF

Property Overview

Suite 142-144 at Madison Square offers 2,560 SF of versatile space in an inner corner location within the center. The layout features a large open area with a built-in shelving wall, ideal for retail display or workspace needs.

Additional features include two breakrooms that can also function as private offices or workspaces, along with two restrooms, providing flexibility for a variety of users. This suite is well-suited for retail, office, or service-based businesses seeking a functional layout in a high-traffic NW Norman location.

Chris Johnson
chris@jcgok.com
405.435.3572



BRICK & BEAM
REALTY

Sally Allen
sally@jcgok.com
405.623.7920

FOR LEASE

480 24th Ave NW,
Suite 142-144
Norman, OK 73069



Johnson

Commercial Group

JohnsonCommercialGroup.com



Chris Johnson
chris@jcgok.com
405.435.3572



BRICK & BEAM
REALTY

Sally Allen
sally@jcgok.com
405.623.7920

FOR LEASE

480 24th Ave NW,
Suite 142-144
Norman, OK 73069



Johnson

Commercial Group

JohnsonCommercialGroup.com



Chris Johnson
chris@jcgok.com
405.435.3572



Sally Allen
sally@jcgok.com
405.623.7920

FOR LEASE

480 24th Ave NW,
Suite 142-144
Norman, OK 73069



Johnson
Commercial Group

JohnsonCommercialGroup.com



Chris Johnson
chris@jcgok.com
405.435.3572



Sally Allen
sally@jcgok.com
405.623.7920

FOR LEASE

480 24th Ave NW,
Suite 142-144
Norman, OK 73069



Johnson
Commercial Group

JohnsonCommercialGroup.com



Chris Johnson
chris@jcgok.com
405.435.3572



BRICK & BEAM
REALTY

Sally Allen
sally@jcgok.com
405.623.7920

FOR LEASE

480 24th Ave NW,
Suite 142-144
Norman, OK 73069



Johnson

Commercial Group

JohnsonCommercialGroup.com



Chris Johnson
chris@jcgok.com
405.435.3572



BRICK & BEAM
REALTY

Sally Allen
sally@jcgok.com
405.623.7920

FOR LEASE

480 24th Ave NW,
Suite 142-144
Norman, OK 73069



Johnson

Commercial Group

JohnsonCommercialGroup.com



Chris Johnson
chris@jcgok.com
405.435.3572



Sally Allen
sally@jcgok.com
405.623.7920

FOR LEASE

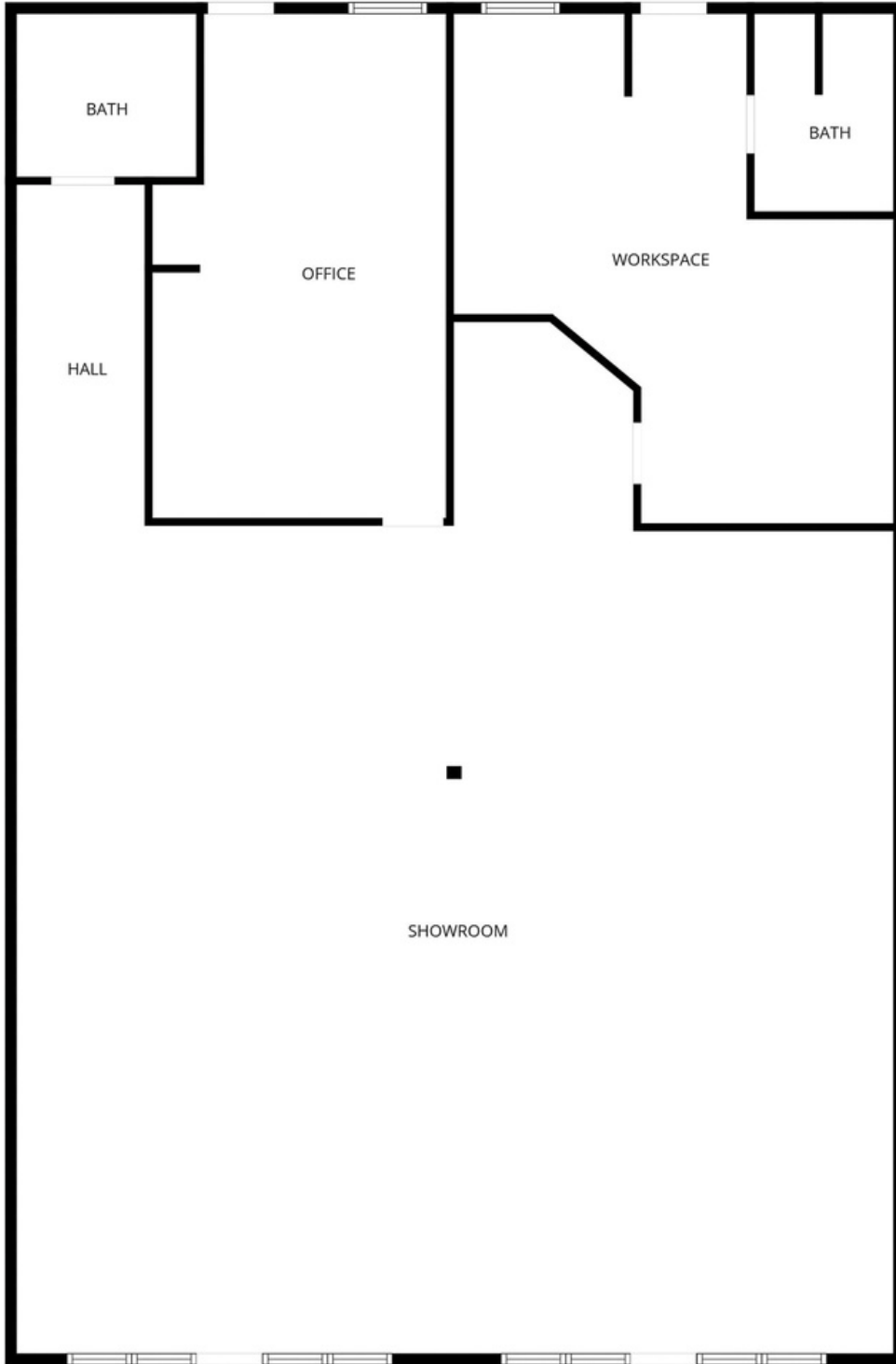
480 24th Ave NW,
Suite 142-144
Norman, OK 73069



Johnson

Commercial Group

JohnsonCommercialGroup.com



Chris Johnson
chris@jcgok.com
405.435.3572



BRICK & BEAM
REALTY

Sally Allen
sally@jcgok.com
405.623.7920

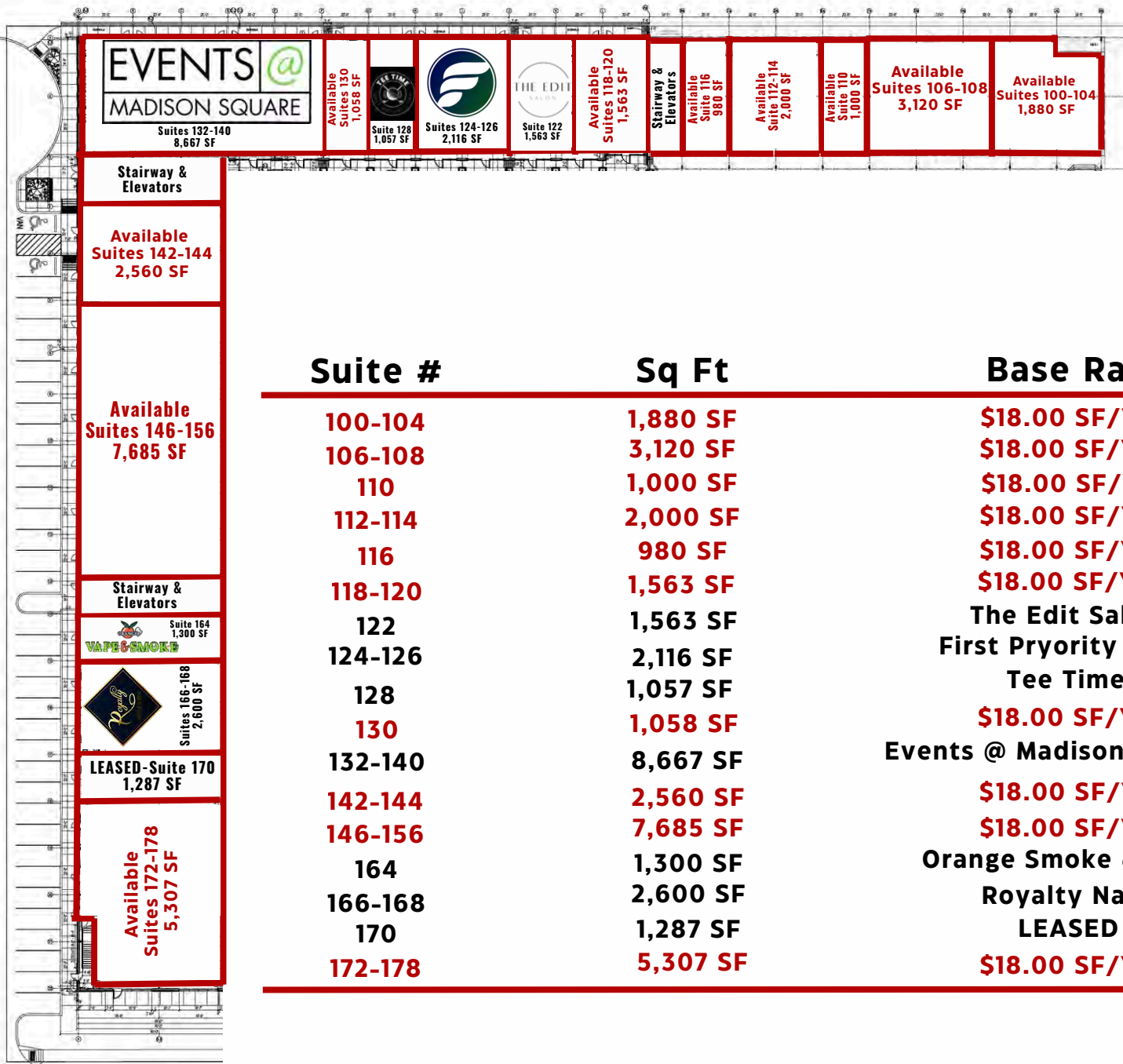
FOR LEASE

**First Floor
Suites 100-178**



Johnson
Commercial Group

JohnsonCommercialGroup.com



Suite #	Sq Ft	Base Rate
100-104	1,880 SF	\$18.00 SF/YR
106-108	3,120 SF	\$18.00 SF/YR
110	1,000 SF	\$18.00 SF/YR
112-114	2,000 SF	\$18.00 SF/YR
116	980 SF	\$18.00 SF/YR
118-120	1,563 SF	\$18.00 SF/YR
122	1,563 SF	The Edit Salon
124-126	2,116 SF	First Priority Bank
128	1,057 SF	Tee Time
130	1,058 SF	\$18.00 SF/YR
132-140	8,667 SF	Events @ Madison Square
142-144	2,560 SF	\$18.00 SF/YR
146-156	7,685 SF	\$18.00 SF/YR
164	1,300 SF	Orange Smoke & Vape
166-168	2,600 SF	Royalty Nails
170	1,287 SF	LEASED
172-178	5,307 SF	\$18.00 SF/YR

Chris Johnson
chris@jcgok.com
405.435.3572



Sally Allen
sally@jcgok.com
405.623.7920

FOR LEASE

Second Floor
Suites 210-272



Johnson
Commercial Group

JohnsonCommercialGroup.com

Suites 210-272
39,983 SF of Available
Contiguous Space

Executive Suites
Fully Leased

Suite

Sq Ft

Base Rate

210	1,007 SF	\$16.00 SF/YR
212	1,007 SF	\$16.00 SF/YR
214	1,007 SF	\$16.00 SF/YR
216	1,237 SF	\$16.00 SF/YR
218	1,027 SF	\$16.00 SF/YR
220	1,048 SF	\$16.00 SF/YR
222	1,048 SF	\$16.00 SF/YR
224	1,048 SF	\$16.00 SF/YR
226	1,048 SF	\$16.00 SF/YR
228	1,048 SF	\$16.00 SF/YR
230	1,048 SF	\$16.00 SF/YR
232-246	6,904 SF	\$16.00 SF/YR
248-258	10,306 SF	\$16.00 SF/YR
260-266	7,000 SF	\$16.00 SF/YR
268-272	4,200 SF	\$16.00 SF/YR

Chris Johnson
chris@jcgok.com
405.435.3572

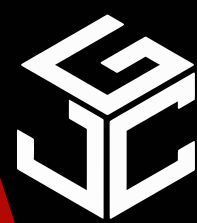


BRICK & BEAM
REALTY

Sally Allen
sally@jcgok.com
405.623.7920

FOR LEASE

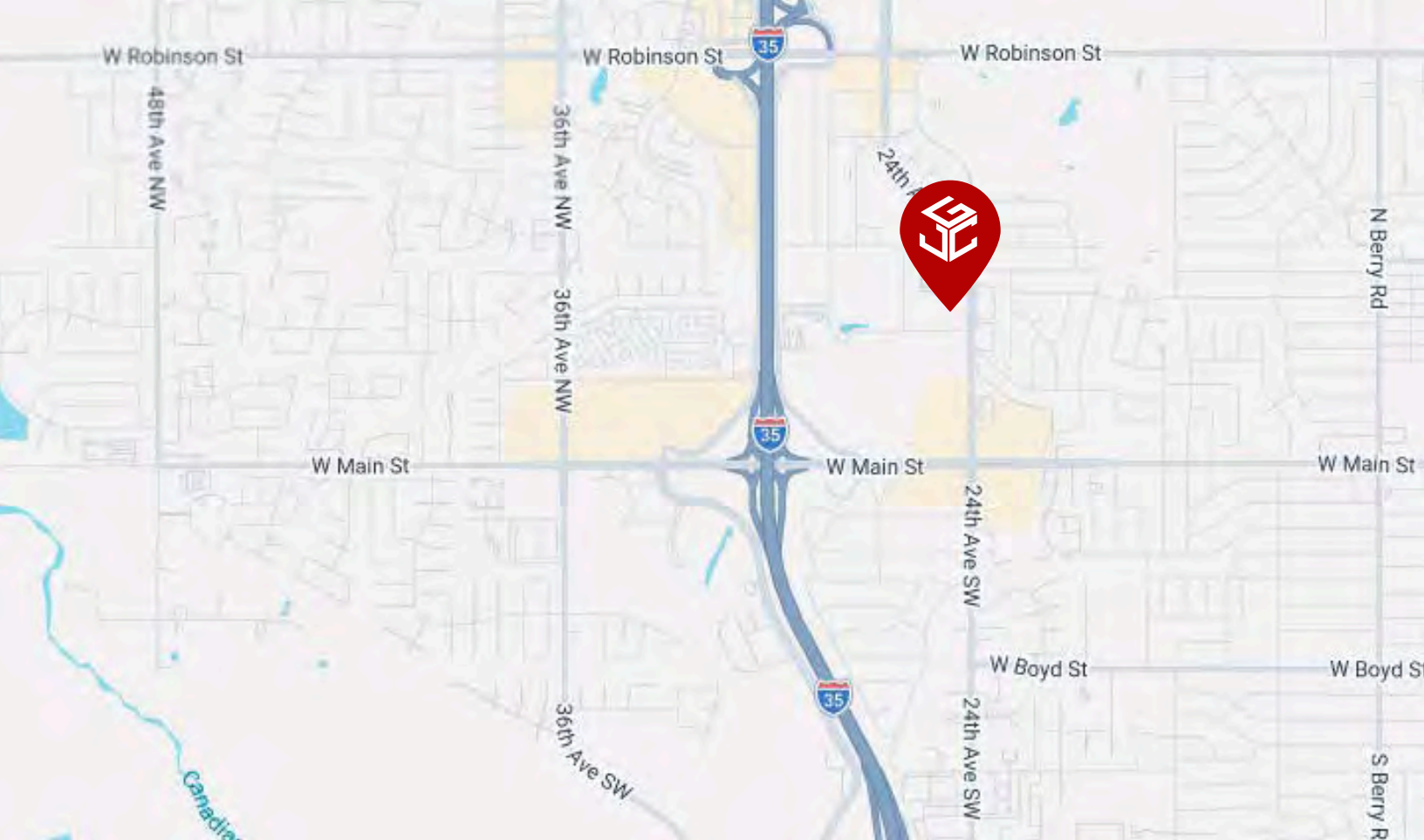
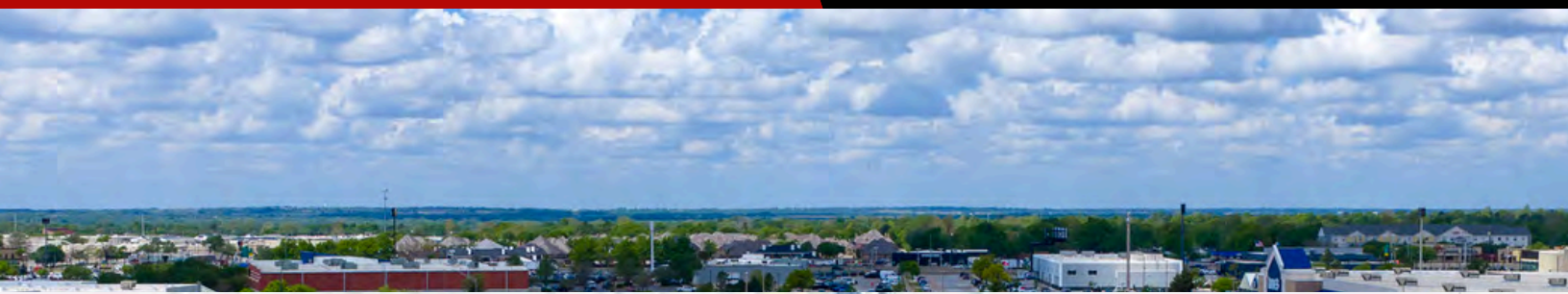
480 24th Ave NW,
Norman, OK 73069



Johnson

Commercial Group

JohnsonCommercialGroup.com



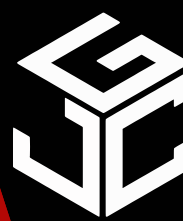
Chris Johnson
chris@jcgok.com
405.435.3572



Sally Allen
sally@jcgok.com
405.623.7920

FOR LEASE

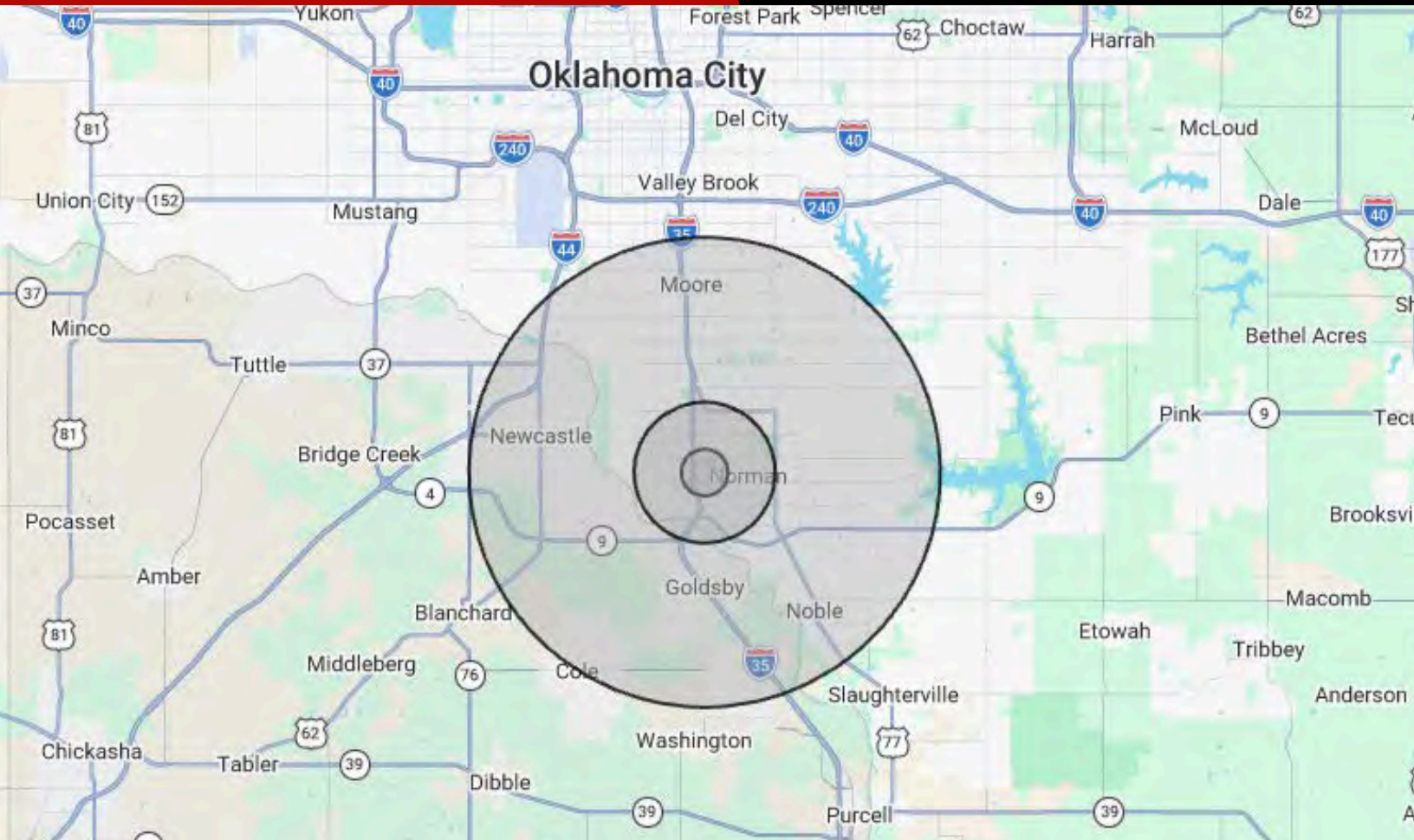
480 24th Ave NW,
Norman, OK 73069



Johnson

Commercial Group

JohnsonCommercialGroup.com



Demographics

1 MILE

3 MILE

10 MILE

	1 MILE	3 MILE	10 MILE
Population	7,158	68,829	250,126
Average Age	40	32	35
Employment	9,453	70,865	118,888
Households	3,196	26,766	96,363
Ave. Household Income	\$72,333	\$81,299	\$85,537
Median Household Value	\$191,041	\$222,962	\$199,560

Traffic Count

Average Daily Volume

18,451 Vehicles

Demographic data provided by CoStar

Chris Johnson
chris@jcgok.com
405.435.3572

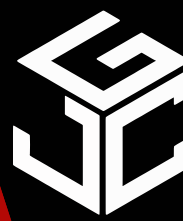


BRICK & BEAM
REALTY

Sally Allen
sally@jcgok.com
405.623.7920

FOR LEASE

480 24th Ave NW,
Norman, OK 73069



Johnson

Commercial Group

JohnsonCommercialGroup.com



Disclaimer

A real estate broker is not authorized to give legal or tax advice. No representation is made by Johnson Commercial Group, its agents or employees, as to the legal effect or tax consequences of the information contained herein or any transaction relating thereto. Although all information furnished regarding property sales or financing options are from sources deemed to be reliable, such information has not been verified and no express representation is made on, or is in any way implied as to the accuracy thereof and is subject to errors, omissions, change of price, or other conditions prior to sale or withdrawal without notice.

Chris Johnson
chris@jcgok.com
405.435.3572



Sally Allen
sally@jcgok.com
405.623.7920