

FOR SALE OR LEASE

500 W HILDEBRAND AVE, SAN ANTONIO, TX 78212



ABOUT THE PROPERTY:

500 W Hildebrand Ave is a 1,060 SF mixed-use commercial property positioned in San Antonio's North Central submarket, just minutes from the vibrant Beacon Hill neighborhood. This property boasts high visibility and traffic, nestled among various retailers and dining establishments. With convenient access to US-281 and IH-10, it presents a prime opportunity for retailers, restaurants, wellness, and professional services.

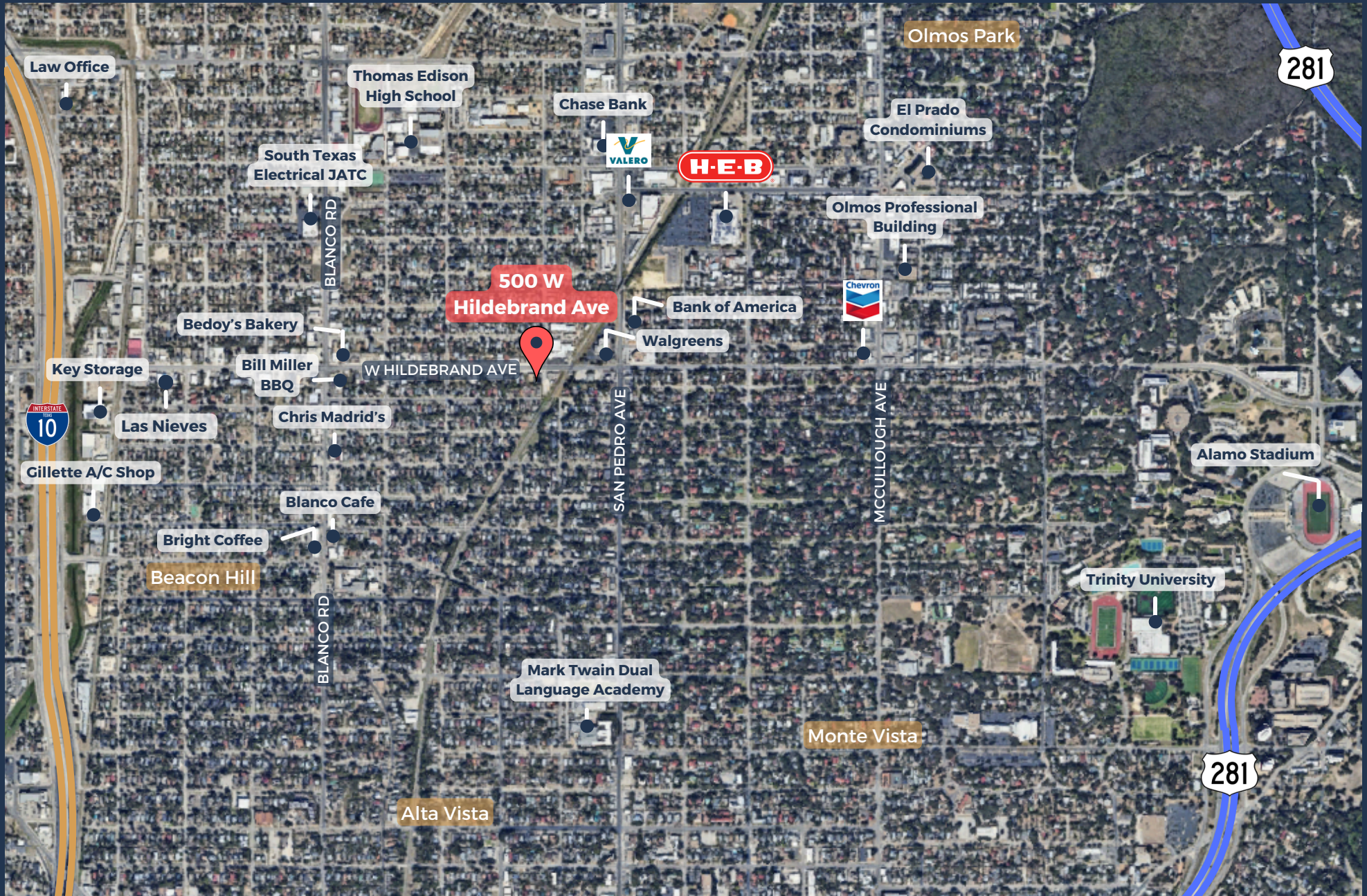
FEATURES:

- 1,060 SF mixed-use commercial property
- High visibility and traffic area (27,483 VPD)
- Drive-through capabilities
- Owner financing available
- Quick access to US-281 and IH-10
- Perfect for retailers, restaurants, wellness and professional services

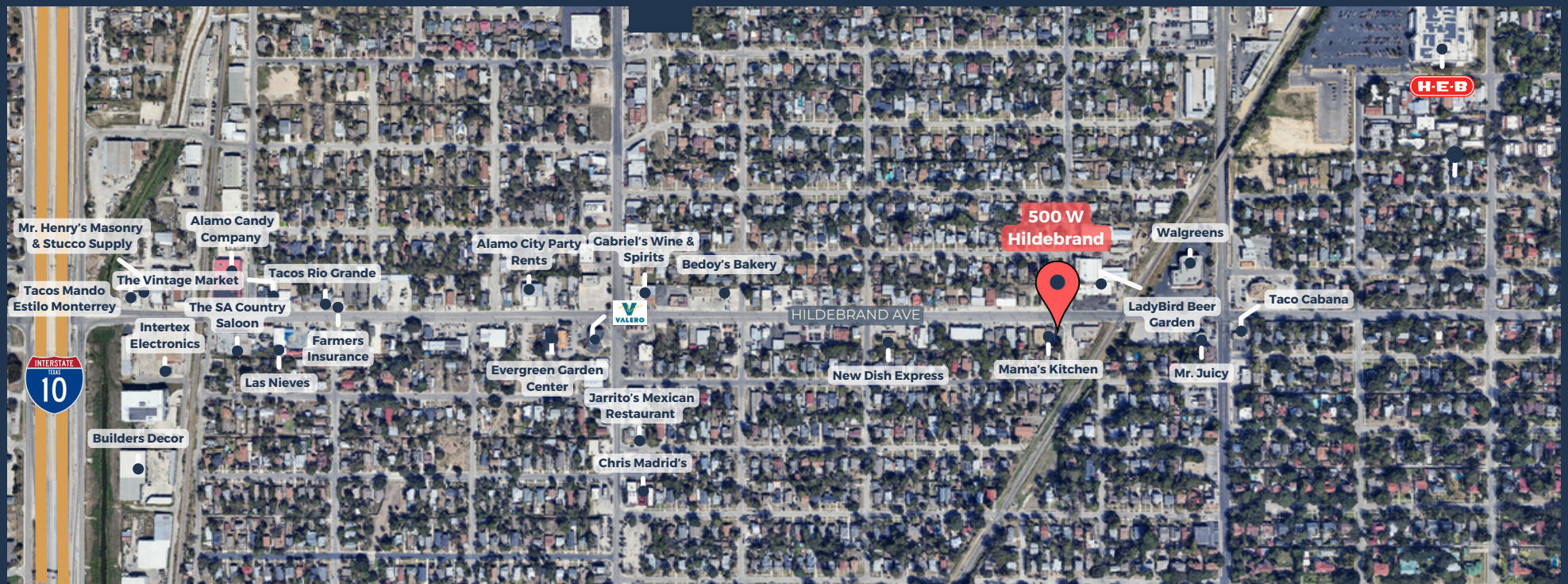
EXTERIOR HIGHLIGHTS



AREA OVERVIEW



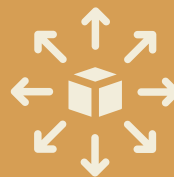
AREA OVERVIEW & DEMOGRAPHICS



Situated along IH-10 in the vibrant Beacon Hill neighborhood, providing direct access to Downtown San Antonio.



Consistent year-over-year population growth.



Attractive location for restaurants, store fronts, and various retail uses.



27,483 vehicles-per-day along W Hildebrand Ave.



140,527 households within a 5-mile radius.



CONTACT
OUR TEAM



Colin McLellan
Partner
cmclellan@llanorealty.com
(210) 908-6345



Stacy Grosse
Associate
sgrosse@llanorealty.com
(210) 886-3884