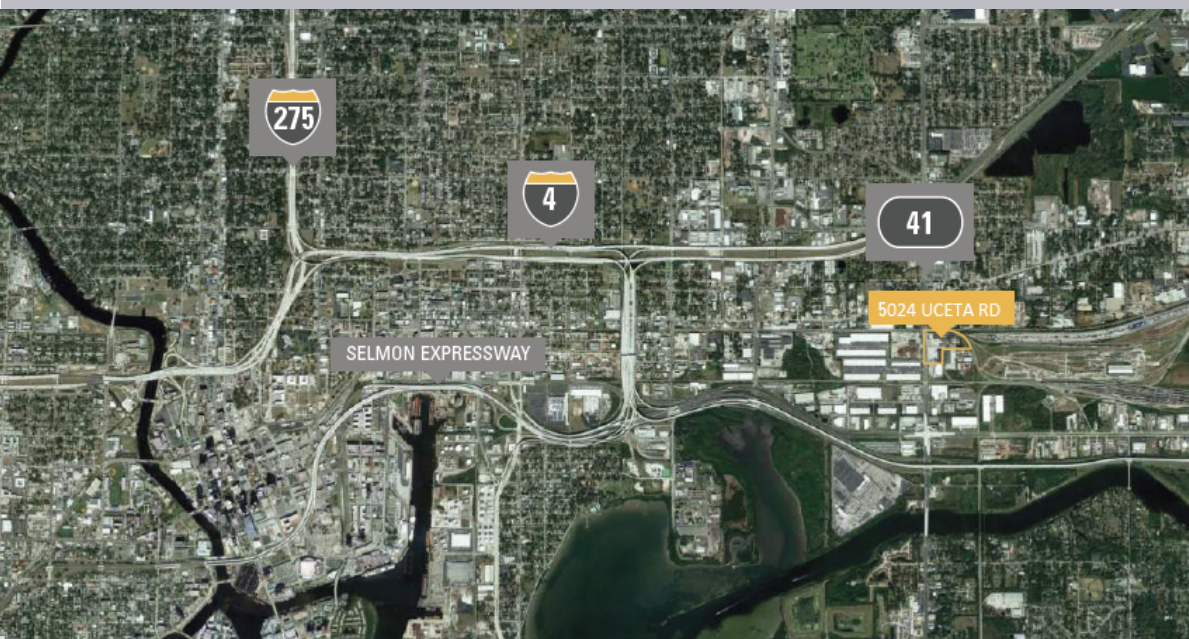




The best logistics location in Tampa based on access to demand/population

- › 56,500 SF Facility
- › New Improvements – New LED lighting, parking lot seal coat, paint, entryway, roof
- › 2+ Acres of fenced paved outside parking and/or storage
- › Less than 3/4 mile from Full I-4 Interchange
- › Less than 3/4 mile from Full Selmon Expressway Interchange
- › 3.5 miles from Port of Tampa Bay
- › Heavy Power – 2,000 AMP 3-Phase
- › Adjacent to CSX Railroad Hub and UPS Hub
- › High Visibility along U.S. 41/N 50th St
- › Traffic Count: 41,000 cars per day





Property Specifications

Industrial Warehouse/Distribution Space

SPECIFICATIONS	5024 Uceta Rd
ACREAGE	3.94± AC w/ 2+ AC Paved Industrial Outside Storage
AVAILABLE SF	56,500 SF – Devisable to 25,000 SF
CLEAR HEIGHT	22'
CONSTRUCTION	Block and brick
DOCK DOORS	9 Dock High Doors
RAMP	2 Ramps
POWER	2,000 AMP 277/480V 3 Phase
ZONING	IG (Industrial General)