



FOR SALE

**27445 Southfield Road
Lathrup Village, MI 48076**



LISTING SUMMARY:

- Building Size: 1,520 SF
- Sale Price: \$265,000 (\$174/PSF)
- Occupancy: Vacant
- Excellent Parking: 8 Spaces in Rear Lot
- Existing Monument Signage on Southfield Rd
- Sold As-Is Condition
- Former Healthcare Practice with 4 Exam Rooms
- Perfect for Medical or Professional Office Use
- No General Dentistry



Nick Zagar
917.557.9172
nz@mirlor.com



Remy Isdamer
313.969.3991
remy@mirlor.com

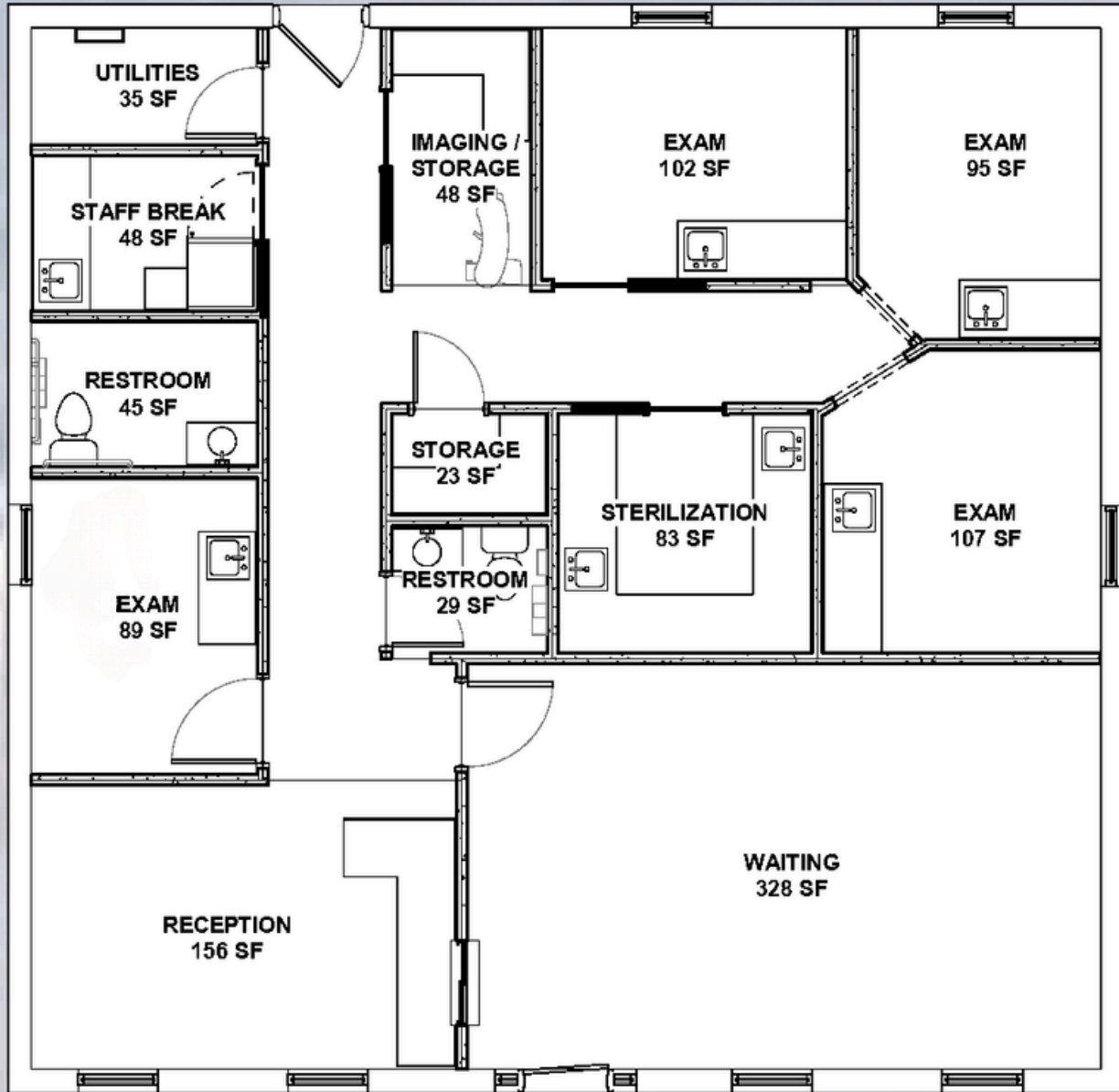
PROPERTY DESCRIPTION:

Located on the high-visibility Southfield Road corridor in the heart of the Southfield/Lathrup Village market, this 1,520 SF former dental building presents an affordable entry point for a healthcare provider, dental specialist, professional services firm, or investor looking to own on a well-established commercial corridor.

The property features a monument sign on Southfield Road, dedicated rear parking, and a history of dental and healthcare occupancy spanning decades.

Priced to reflect its current condition, this is an ideal opportunity for an owner-user or value-add buyer seeking visibility and location at attractive pricing.





27445 SOUTHFIELD RD
1,520 SF



LOCATION & DEMOGRAPHICS:

- Located in Lathrup Village
- Frontage on Southfield Road between W 11 Mile Rd and W 12 Mile Rd
- Easy highway access via I-696
- Within a 20-minute drive to the heart of Downtown Detroit
- 55,000 people in 2-mile radius
- 23,000 households in 2-mile radius
- \$100,000 average annual household income in 2-mile radius

