

FOR SALE

COMPLETELY RENOVATED BUILDING

16350 NORTHVILLE ROAD, PLYMOUTH, MICHIGAN 48170



[CLICK HERE TO VIEW
PROPERTY HIGHLIGHT VIDEO](#)

GLENN N. DESROSIERS

SENIOR VICE PRESIDENT | BROKERAGE SERVICES

P: 248.324.2000 **E:** GLENN.DESROSIERS@FREG.COM

34975 WEST TWELVE MILE ROAD | FARMINGTON HILLS, MI 48331

WWW.FRIEDMANREALESTATE.COM

16350 NORTHVILLE ROAD

PROPERTY HIGHLIGHTS

- Completely renovated building (2025) to a high standard, excellent opportunity for an owner/user, corporate headquarters or high-tech tenant
- Stunning architecture in an attractive park-like setting with abundant glass-line to view natural landscaping and a captivating active river
- Proximity to I-275, I-96, downtown Plymouth and Northville
- 20 Minutes from Metropolitan Airport
- Demising options available (see proposed options below)
- 67 parking spaces available

Sale Price	\$4,500,000
Parcel IDs	77-054-01-0047-008 (3.49 Acres) 77-054-01-0047-003 (1.13 Acres)
Acres	4.62
Annual Taxes	\$26,611.62
Total Building SF	19,232 SF
Property Type	Industrial
Floors	Two (2)
Ceiling Height	18'
Drive-In Door Height	14'

The information provided herein along with any images or attachment(s) was obtained from sources believed to be reliable, however, Friedman Real Estate makes no guarantees, warranties, or representations as to the completeness or accuracy of such information and legal counsel is advised. All information provided is subject to verification and no liability for reliance on such information or errors or omissions is assumed. The presentation of this property is submitted subject to errors, omissions, change of price or conditions, prior sale or lease, or withdrawal without notice. Copyright © 2025 Friedman Real Estate. All rights reserved.



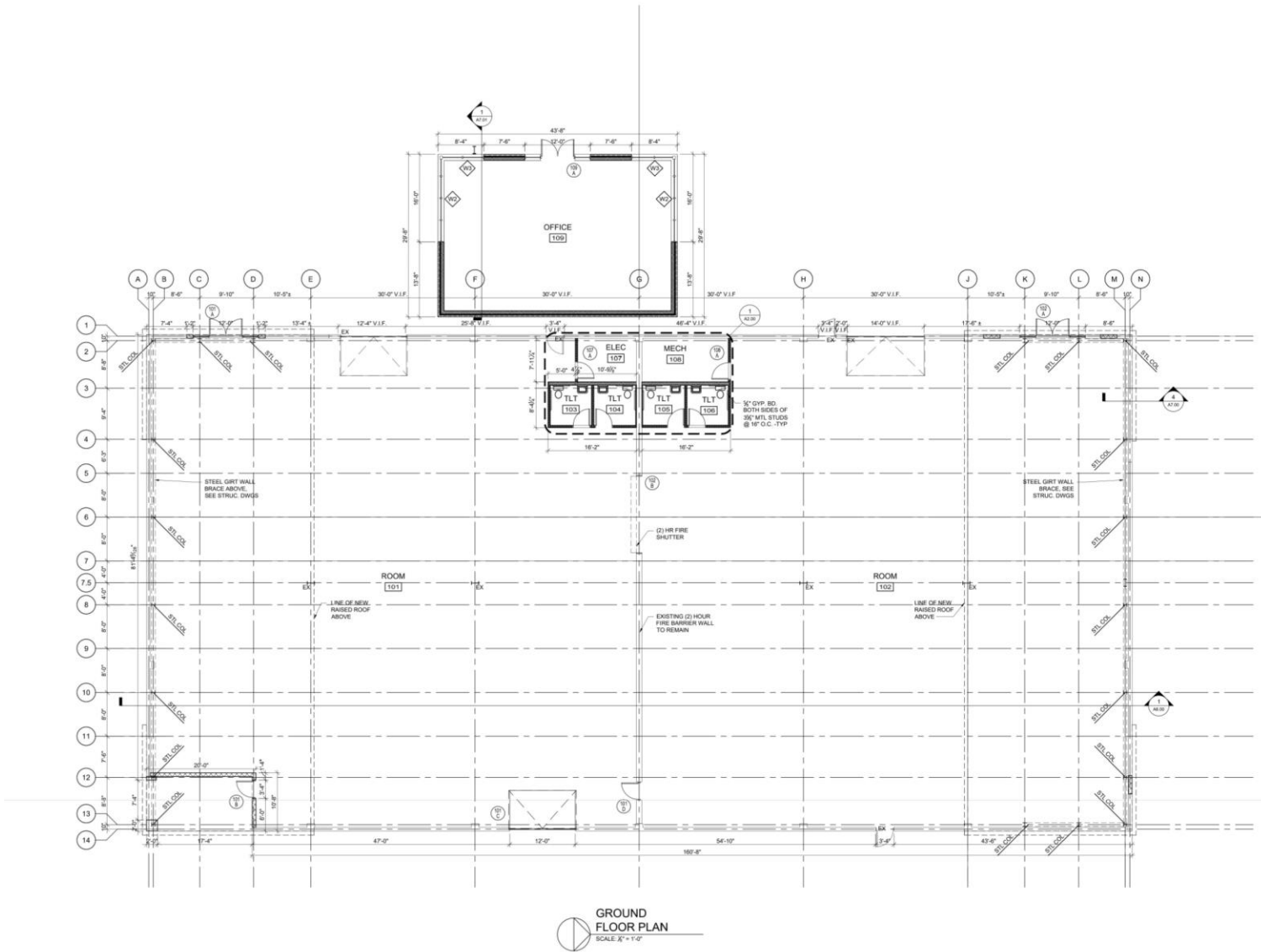
[CLICK HERE TO VIEW
PROPERTY HIGHLIGHT VIDEO](#)



PROPERTY HIGHLIGHTS

16350 NORTHVILLE ROAD

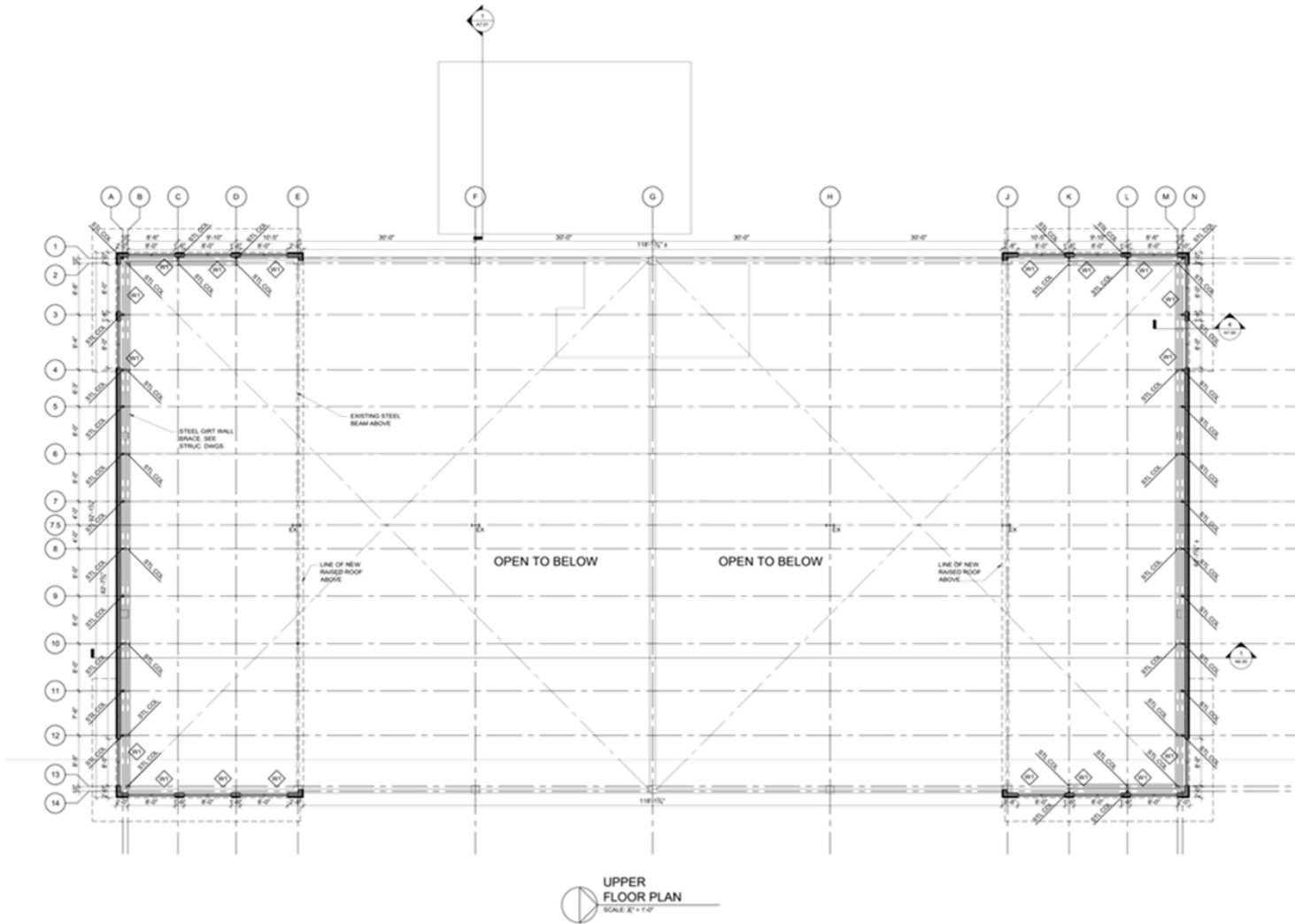
GROUND FLOOR PLAN & AVAILABILITY



BOWERS & ASSOCIATI 2800 South Branch Parkway • Ann Arbor, MI 48106 P: 734.993.1100 • F: 734.993.1101
CONSULTANT + NAME
PROJECT + INFORMATION HINES INDUSTRIAL 16350 NORTHVILLE ROAD NORTHVILLE TOWNSHIP, MI
PROJECT + NUMBER 21-604
ISSUE + DATE 25 OCT 2022 PERMIT
SHEET + TITLE GROUND FLOOR PLAN 21604mat.dwg
SHEET + NUMBER A1.00

16350 NORTHVILLE ROAD

UPPER FLOOR PLAN & AVAILABILITY

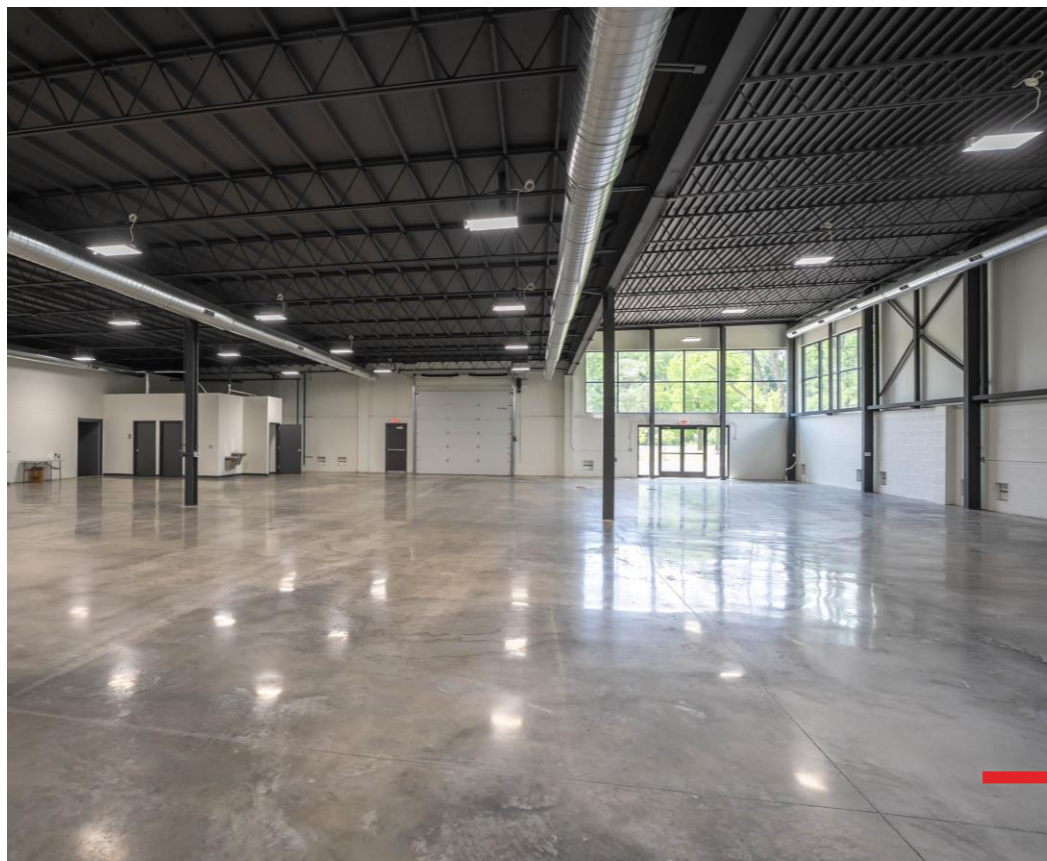
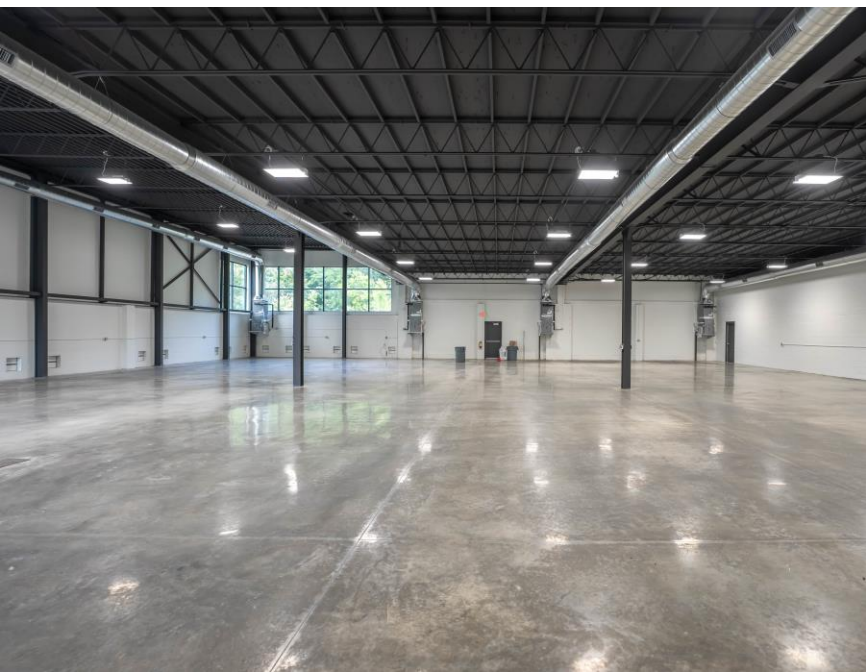
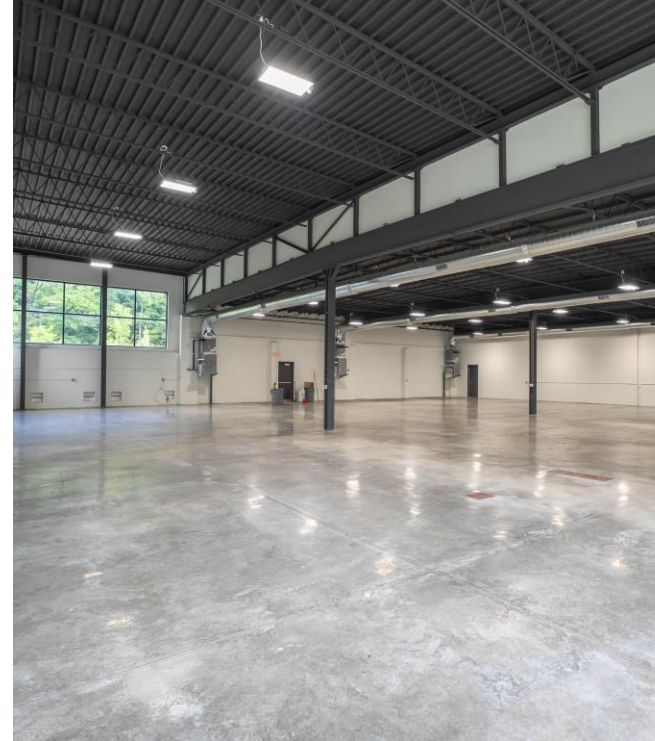


BOWERS ASSOCIATES <small>2000 South Main Street • Ann Arbor, MI 48106 P: 734.769.2000 www.bowersassociates.com</small>	
CONSULTANT • NAME	
PROJECT • INFORMATION HINES INDUSTRIAL <small>16350 NORTHVILLE ROAD NORTHVILLE TOWNSHIP, MI</small>	
PROJECT • NUMBER	
21-604	
ISSUE • DATE	
28 OCT 2022 PERMIT	
SHEET • TITLE	
UPPER FLOOR PLAN <small>21604.dwg</small>	
SHEET • NUMBER	
A1.01	

FLOOR PLAN



ADDITIONAL PHOTOS



INTERIOR PHOTOS



INTERIOR PHOTOS



[CLICK HERE TO VIEW
PROPERTY HIGHLIGHT VIDEO](#)

SUBJECT PROPERTY

Includes 29 existing parking spaces plus 38 additional parking spaces coming soon for a total of 67 parking spaces, outdoor storage permitted

NORTHVILLE ROAD

 **\$10,739 VPD**

LOCATION OVERVIEW



[CLICK HERE TO VIEW
PROPERTY HIGHLIGHT VIDEO](#)

NORTHVILLE ROAD

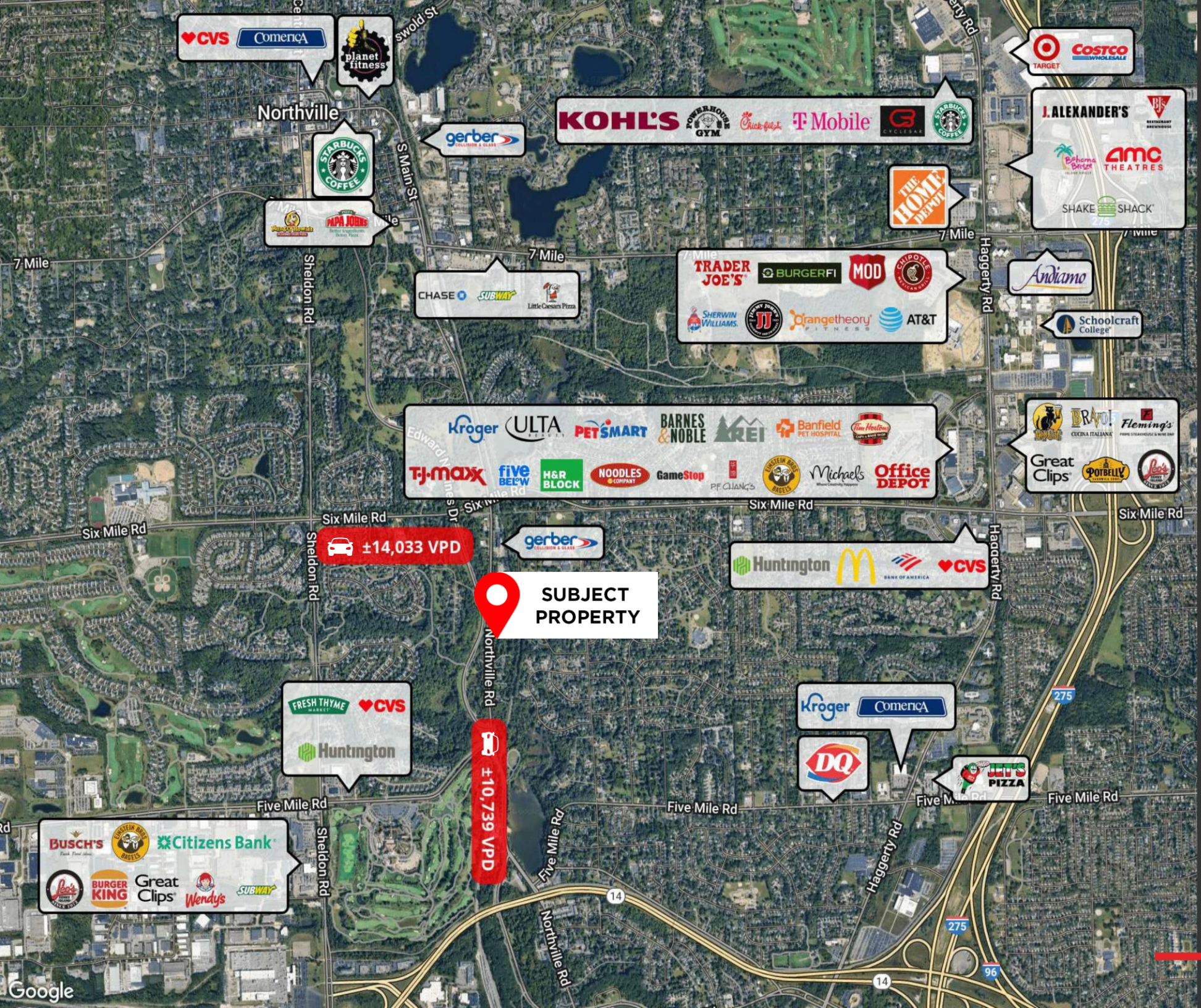
 **±10,739 VPD**

SUBJECT PROPERTY

Includes 29 existing parking spaces plus 38 additional parking spaces coming soon for a total of 67 parking spaces, outdoor storage permitted

LOCATION OVERVIEW

NEARBY AMENITIES



±14,033 VPD

SUBJECT PROPERTY

±10,739 VPD



PLYMOUTH, MICHIGAN

Plymouth, Michigan, is a vibrant suburban community located in Wayne County, roughly halfway between Detroit and Ann Arbor. Known for its historic charm and small-town atmosphere, Plymouth offers a walkable downtown filled with boutique shops, restaurants, cafes, and galleries. The city's central gathering spot, Kellogg Park, hosts numerous events throughout the year, including the popular Plymouth Ice Festival and Fall Festival, drawing visitors from across the region. Its tree-lined streets and well-preserved architecture add to the area's appeal, making it a desirable place to live, work, and visit.

In addition to its cultural attractions, Plymouth boasts a strong local economy supported by a mix of small businesses, light industrial firms, and professional services. The area also benefits from its proximity to major highways like I-275 and M-14, offering easy access to surrounding metro areas and key employment hubs. With top-rated schools, a range of housing options, and a strong sense of community, Plymouth continues to attract families, professionals, and entrepreneurs looking for a balanced lifestyle that blends suburban comfort with urban convenience.

PLYMOUTH, MICHIGAN

EST POPULATION (2023)	±9,234
HOUSEHOLDS	±4,116
AVERAGE HH INCOME	±\$151,742



City of Northville Michigan

Northville, Michigan, has become a thriving community with a revitalized downtown area, making it an ideal place to live and own a business. The Northville Downtown Development Authority (DDA) has played a crucial role in enhancing the area's economic and physical growth, ensuring a safe, clean, and attractive business district. With over 150 businesses, including unique shops, art galleries, and restaurants, the downtown is a bustling hub that attracts both residents and visitors. The city's commitment to preserving its historic charm, with Victorian-era architecture, adds to its appeal, making it an attractive place to settle down and build a business.

In addition to its vibrant downtown, Northville offers ample green spaces such as Maybury State Park and Edward N. Hines Park, providing residents with outdoor recreational opportunities. The city's strong community spirit, excellent schools, and family-friendly atmosphere make it a great place to live, while its growing residential base and strong local economy create a supportive environment for businesses to thrive. With easy access to nearby business hubs and a high quality of life, Northville presents a perfect blend of urban amenities and small-town charm for both residents and entrepreneurs.

NORTHVILLE, MICHIGAN

EST POPULATION (2023)	±6,080
HOUSEHOLDS	±2,574
AVERAGE HH INCOME	±\$164,877

CREATING
VALUE
BEYOND
REAL
ESTATE



GLENN N. DESROSIERS | SENIOR VICE PRESIDENT | BROKERAGE SERVICES

FRIEDMAN REAL ESTATE | 34975 W. 12 MILE ROAD | FARMINGTON HILLS, MI 48331 | FRIEDMANREALESTATE.COM

