



Turnkey Medical Office

6711 38th Ave N, St. Petersburg, 33710



💰 Purchase Price: **\$1,200,000**

💰 Lease Rate: **Undisclosed**

📏 Unit Size: **2,000 SF On .28 AC**

✅ Available: **Now**

Jay Billings

Commercial Specialist

(636) 219-9156 ☎

Jay@cprteam.com ✉

Harrison Gault

Commercial Specialist

(727) 677-8070 ☎

Harrison@cprteam.com ✉



PUBLIX

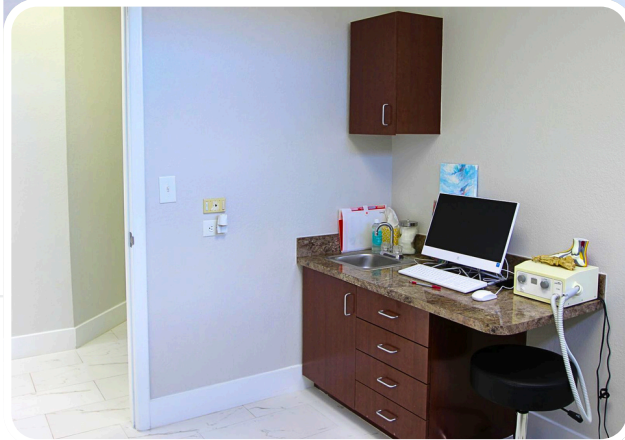
66TH ST N
(AADT: 16,800)

**HCA FLORIDA ST
PETE HOSPITAL**

**SUBJECT
PROPERTY**

38TH AVE N
(AADT: 16,800)





0.925

0.40



6711 38th Ave N, St. Petersburg, 33710

Turnkey medical office opportunity located in the heart of St. Petersburg at 6711 38th Ave N. The property features 2,000 SF on .28 AC and is **currently configured with 4 exam rooms, private office, reception area, lab, break room, X-ray room, and 3 bathrooms.**

Positioned near HCA Florida St. Pete Hospital, Northside Hospital, and Bay Pines, the property offers excellent accessibility with strong traffic counts along 38th Ave N and 66th St N. Additional highlights include **15 parking spaces, monument signage, and immediate availability,** making it ideal for an owner-user medical practice or healthcare-related operator.

Highlights



2,000 SF On .28 AC



Turnkey Medical Office Close To St Pete General Hospital, Northside Hospital and Bay Pines



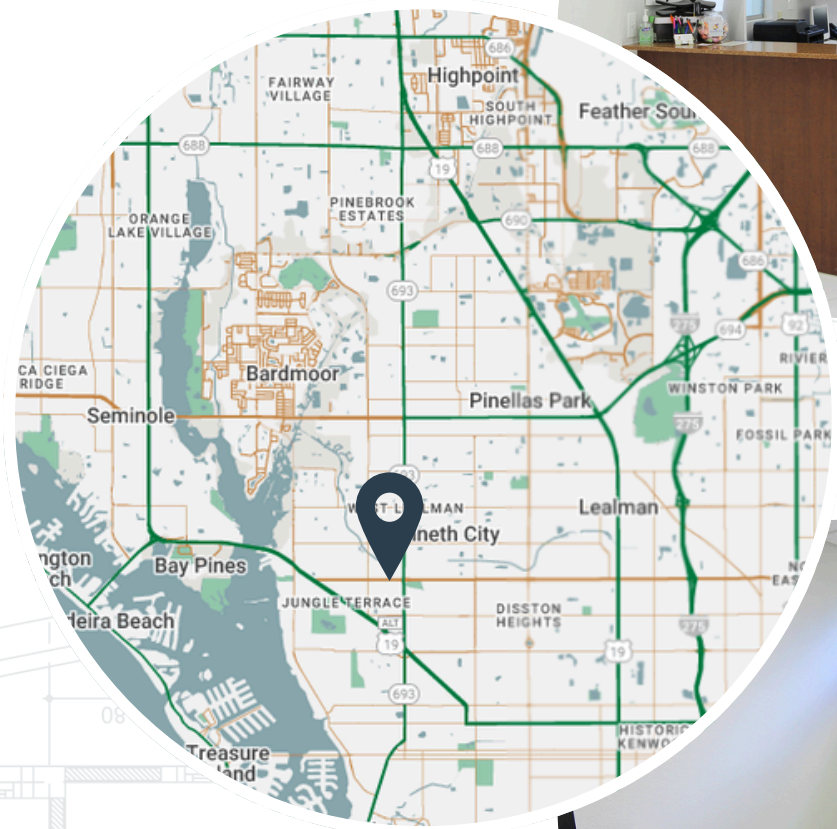
AADT
38th Ave N: 16,800
66th St N: 43,500



4 Exam Rooms, Private Office,
Reception, Lab, Break Room, X-Ray
Room, 3 Bathrooms

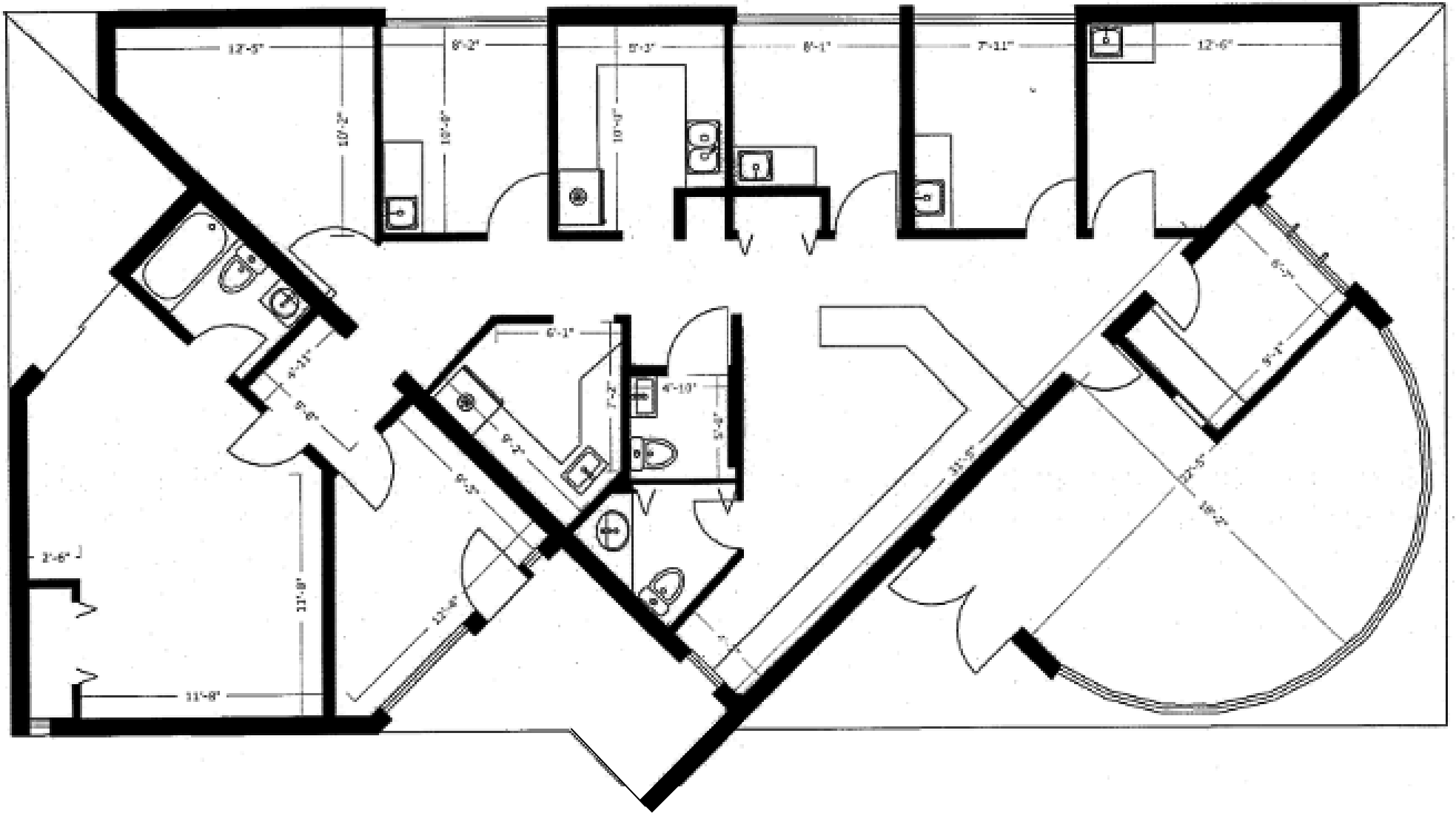


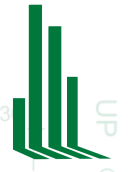
15 Parking Spaces
With A Monument Sign



*Information herein is not warranted and subject to change without notice.
We assume no liabilities for errors and omissions.*

Floor Plan



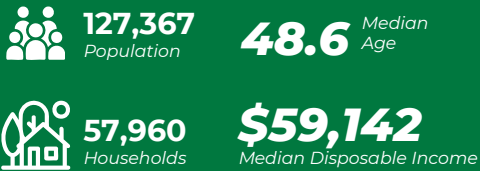


DEMOGRAPHIC SUMMARY

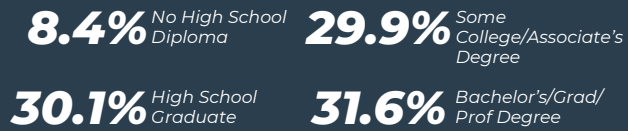
6711 38th Ave N, St. Petersburg, 33710
DRIVE OF 10 MINUTES



KEY FACTS



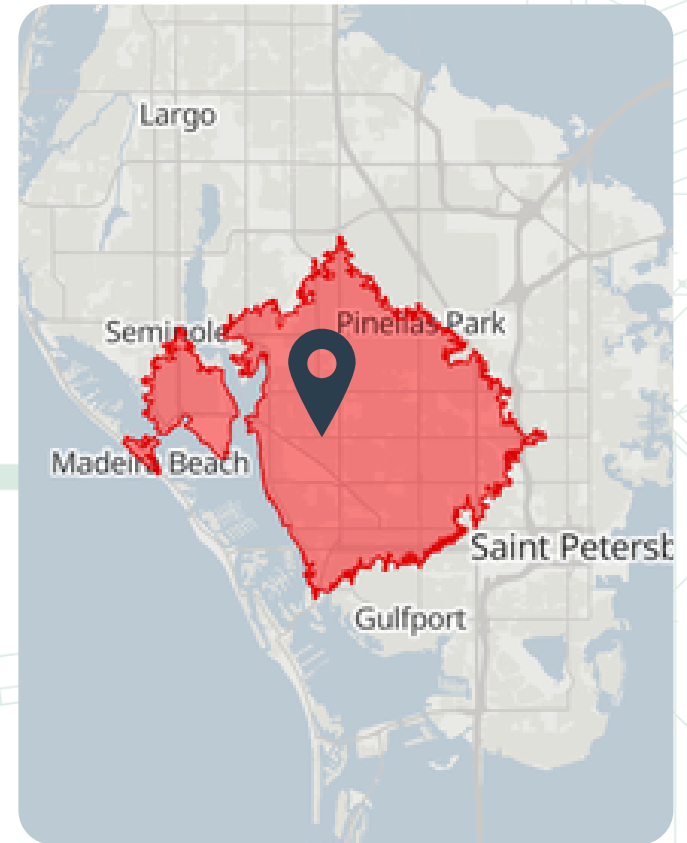
EDUCATION



INCOME



EMPLOYMENT



Source: This infographic contains data provided by Esri (2024, 2029). © 2025 Esri

Listing Team



Jay Billings

Commercial Specialist

☎ (636) 219-9156

✉ Jay@cprteam.com



Harrison Gault

Commercial Specialist

☎ (727) 677-8070

✉ Harrison@cprteam.com

☎ 727-822-4715

🌐 www.cprteam.com

🔗 [CommercialPartnersRealty](https://www.commercialpartnersrealty.com)