



CENTERPARK
FLEX



Colliers

STEVE BRUCE

Vice Chairman | Co-Lead
t 858-922-3056
steve.bruce@colliers.com
CA RE Lic. #01455744

CHRIS HIGH, SIOR

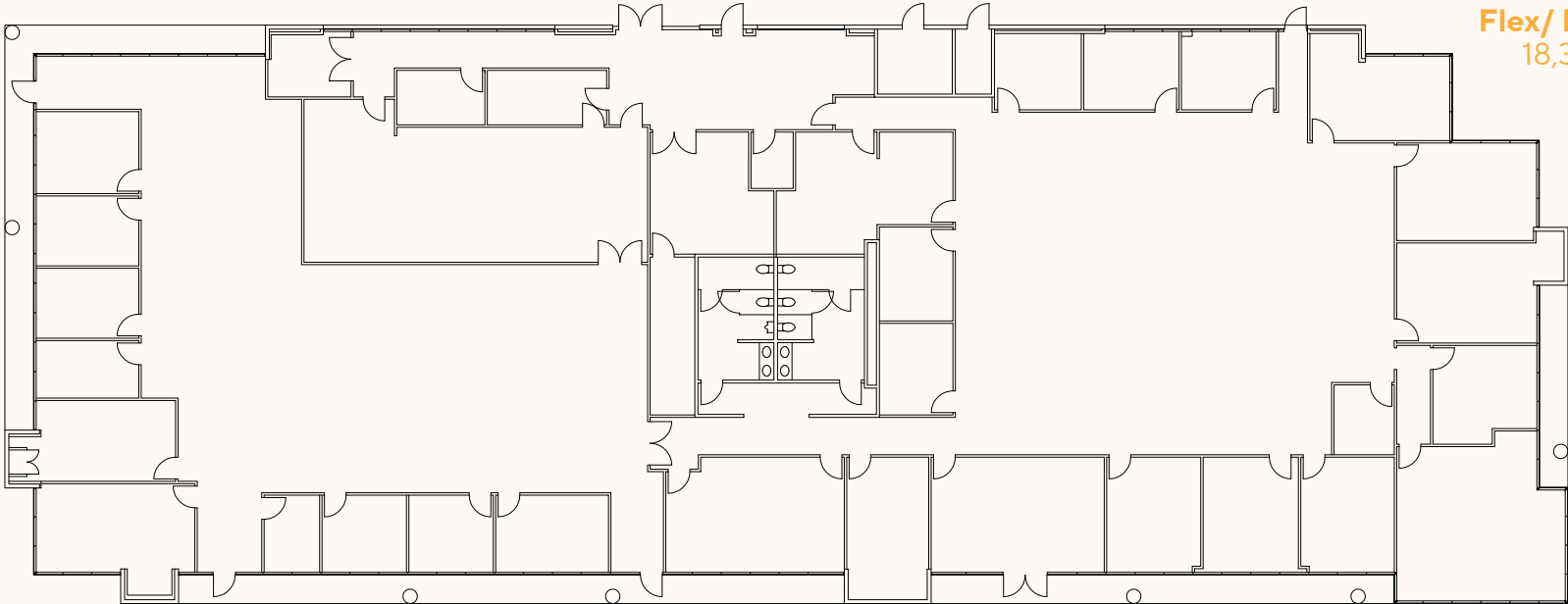
Vice Chairman | Co-Lead
t 619-772-2936
chris.high@colliers.com
CA RE Lic. #01734544

CONOR EVANS

Vice President
t 858-291-1415
conor.evans@colliers.com
CA RE Lic. #01963596

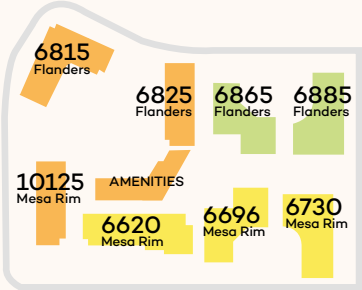
10125 Mesa Rim Rd

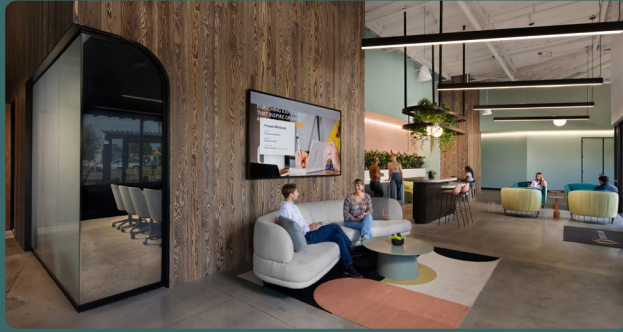
FULL BUILDING



Flex/ Light Lab
18,382 SF

Access to Backup Power
\$3.35/SF Gross





Room for life- at work

- Onsite Restaurant
- Beer On Tap
- Food Trucks
- Mindfulness Spaces
- Outdoor Seating
- Collaboration Areas
- Resort Style Fitness Center