

# ±27.92 RAIL SERVED ACRES AVAILABLE

## NEC BURRIS ROAD & CLAYTON ROAD | PINAL COUNTY, ARIZONA

### Legends

**LOCATION** The Property is located on the northeast corner of Burris Road & Clayton Road in Pinal County, AZ.

**SIZE** ±27.92 Acres

**PRICE** Submit All Offers

**PARCELS** 503-34-002A, 503-34-002B, 503-34-003, 503-34-004A

**TAXES** \$3,452.06 (2023)

**ZONING** I-2, Pinal County

**UTILITIES** Water - Arizona Water Company  
Sewer - City of Casa Grande  
Power - Arizona Public Service  
Gas - Southwest Gas Corporation

**IRRIGATION** Property is located in the San Carlos Irrigation District. [Click here to view the Water Rights.](#)

**Subject**

### CONTACT FOR MORE INFORMATION

Kirk P. McCarville, CCIM  
kmccarville@landadvisors.com  
520.251.0348

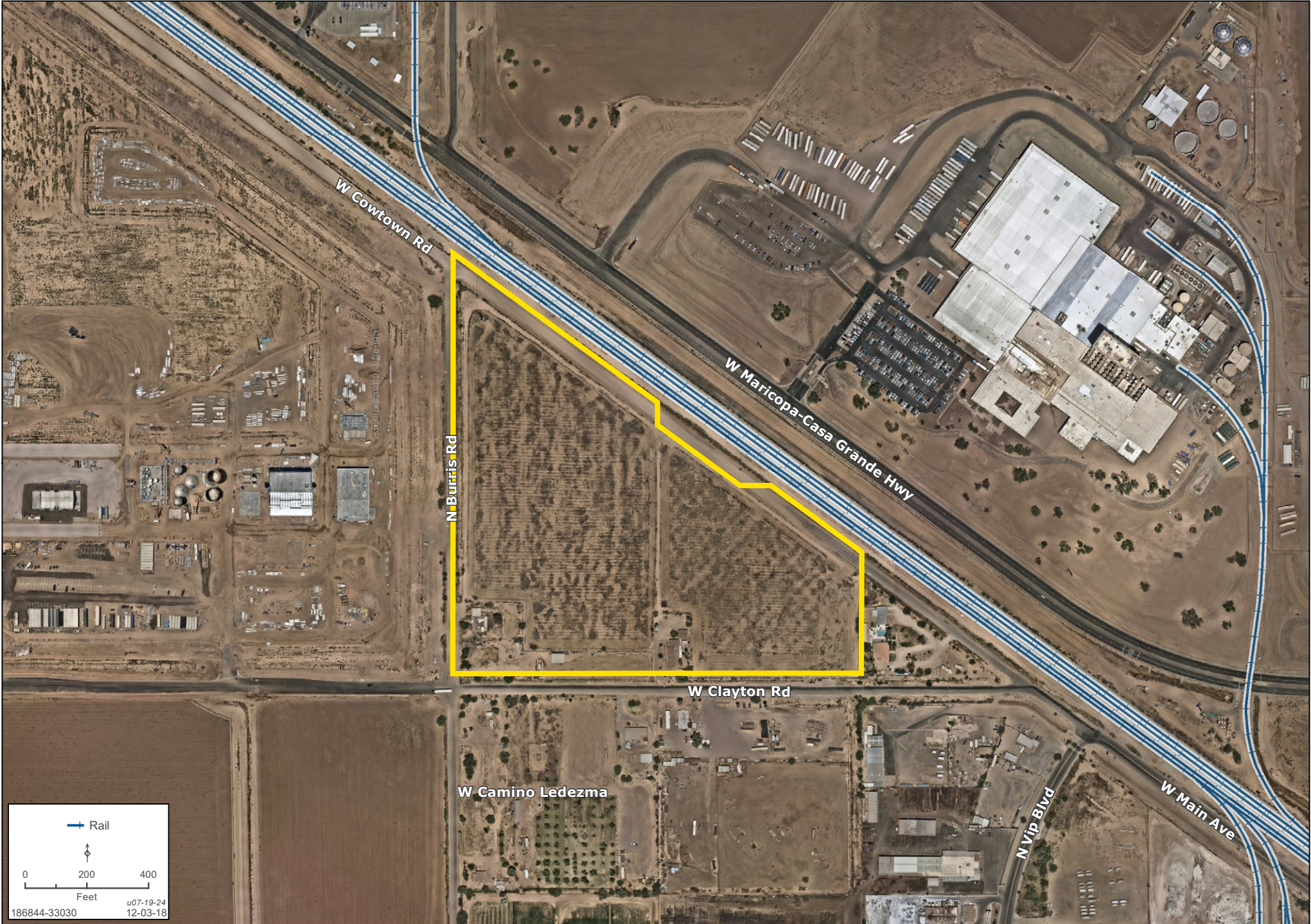
Trey Davis  
tdavis@landadvisors.com  
602.363.3901



520.251.0348 | [LANDADVISORS.COM](http://LANDADVISORS.COM)

# DETAIL MAP

Kirk P. McCarville, CCIM | Trey Davis | 520.251.0348 | www.landadvisors.com



# AREA MAP

Kirk P. McCarville, CCIM | Trey Davis | 520.251.0348 | www.landadvisors.com



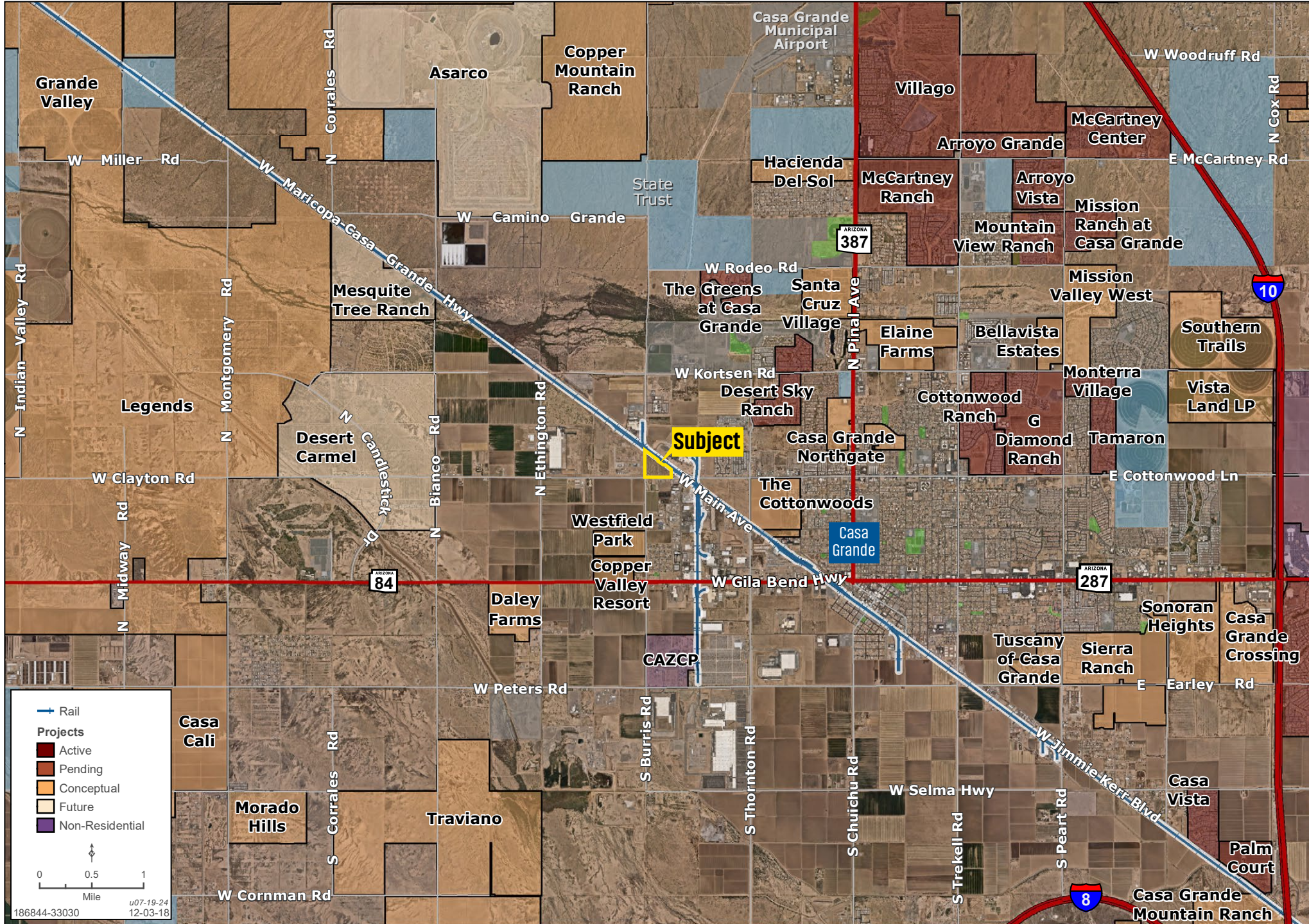
# CORPORATE NEIGHBORS MAP

Kirk P. McCarville, CCIM | Trey Davis | 520.251.0348 | www.landadvisors.com



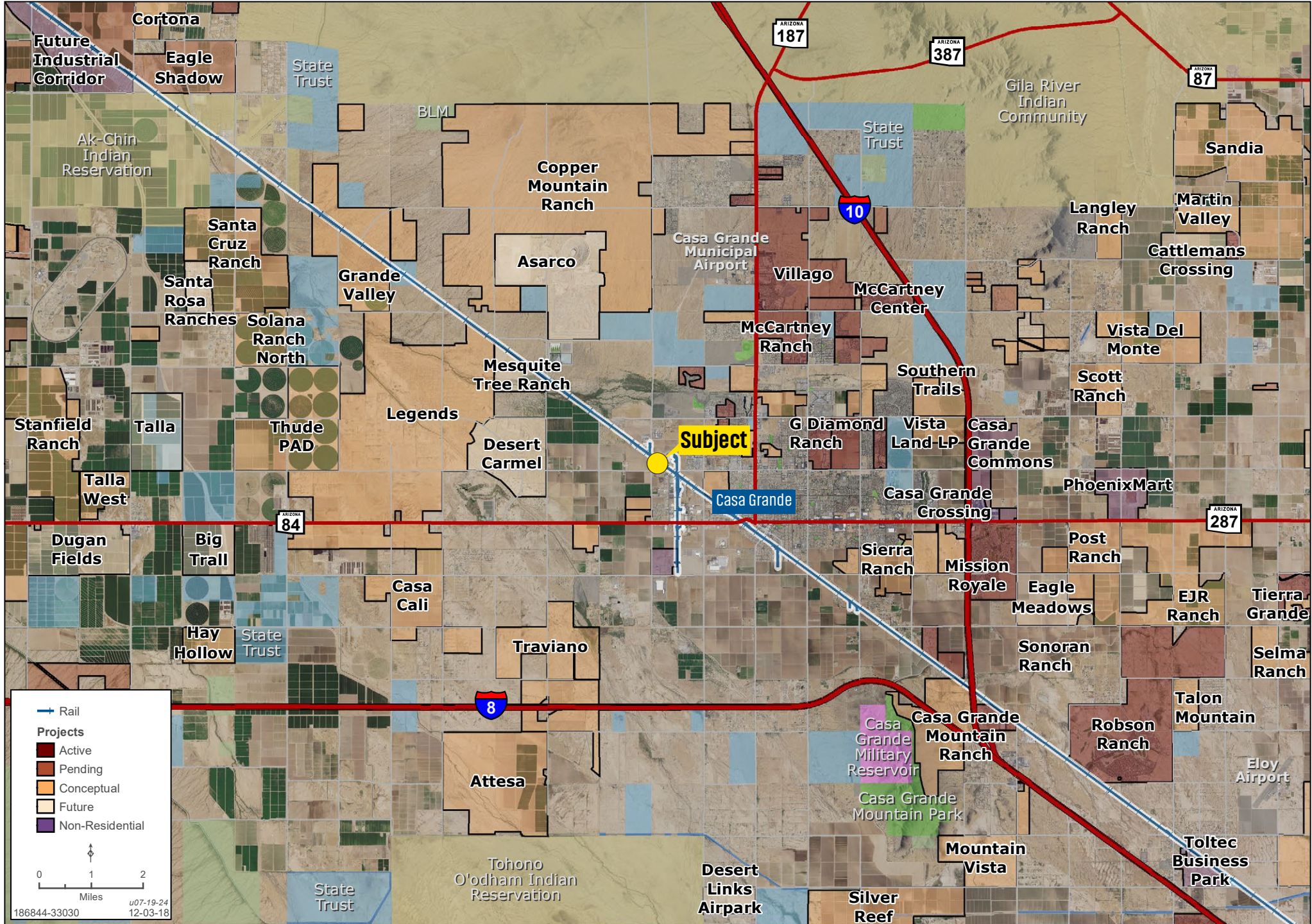
# DEVELOPMENT MAP

Kirk P. McCarville, CCIM | Trey Davis | 520.251.0348 | www.landadvisors.com



# REGIONAL MAP

Kirk P. McCarville, CCIM | Trey Davis | 520.251.0348 | www.landadvisors.com



The information in this document and any attachments regarding any property has been obtained from sources believed reliable, but we have not verified it and we make no guarantee, warranty, or representation as to its accuracy or completeness, and we do not undertake to update or correct any of the information presented. Any projections, opinions, assumptions, or estimates ("forward-looking statements") used are, for example, only and do not represent the current or future performance of the property and actual results may differ materially from such forward-looking statement due to, without limitation, changes in: (i) the market, (ii) governmental legal, regulatory or permitted use changes, and (iii) other factors. You and your advisors should conduct a careful, independent investigation of the property to determine to your satisfaction the property's suitability for your needs. Any reliance on this information is at your own risk and is subject to change, prior sale or complete withdrawal. AZPinal186844 - 07.22.2024.



[LandAdvisors.com](https://www.LandAdvisors.com)