

# For Sale or Lease

Colliers

41,400 SF Industrial/Manufacturing Facility

6200 NE Cherry Drive ■ Hillsboro, Oregon

Industrial/manufacturing facility in one of the region's most dynamic business corridors. The building features 6,446 SF of office space, 2 dock doors, 3 grade-level doors, and plentiful parking, making it well-suited for a wide range of industrial and manufacturing users.

Exceptional connectivity with walking distance to the Orenco MAX Station and Orenco Station retail amenities, while sitting in close proximity to Intel's Hawthorn Farms campus and surrounded by prominent neighbors including Amazon, Genentech, Thermo Fisher Scientific, Qorvo, and many more of the region's leading technology and industrial companies.

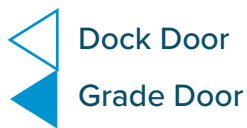
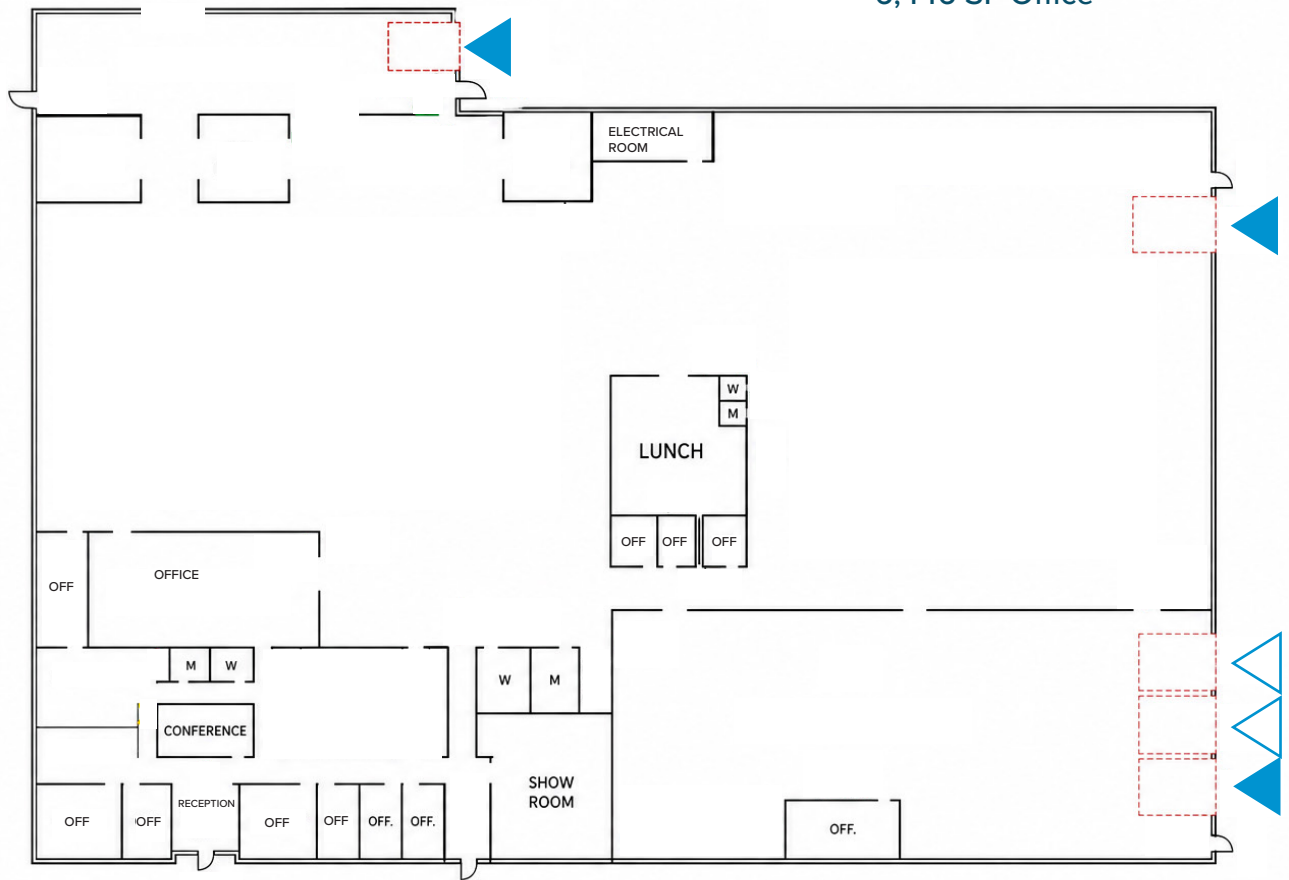


# Floorplan

6200 NE Cherry Drive ■ Hillsboro, Oregon



41,400 SF Shell  
6,446 SF Office



**KAREN LISIGNOLI, SIOR**  
karen.lisignoli@colliers.com  
503 740 1679

**MIKE THOMAS**  
mike.thomas@colliers.com  
503 499 0059



Intel



## HIGHLIGHTS

- › 41,400 SF Industrial Manufacturing building with 6,446 SF air-conditioned office
- › Located in an [Enterprise Zone](#)
- › Zoned SCI, Station Community Industrial ([Use Categories](#))
- › 2 Docks | 3 Grade
- › 17' - 19' clear height
- › 92 parking spaces (2.2/1,000)
- › Close proximity to Intel Hawthorn Farms
- › Walking distance to Orenco MAX Station and Orenco Station Retail Amenities
- › 3,300 Amps, 3-Phase, 480/277V total power capacity



**Call for Lease & Sale Rates**



FOR MORE INFORMATION, CONTACT:

**MIKE THOMAS**  
 mike.thomas@colliers.com  
 503 499 0059

**KAREN LISIGNOLI, SIOR**  
 karen.lisignoli@colliers.com  
 503 740 1679



**COLLIERS | PORTLAND**  
 851 SW Sixth Avenue, Suite 1600  
 Portland, OR 97204  
 www.colliers.com/portland

This document/email has been prepared by Colliers for advertising and general information only. Colliers makes no guarantees, representations or warranties of any kind, expressed or implied, regarding the information including, but not limited to, warranties of content, accuracy and reliability. Any interested party should undertake their own inquiries as to the accuracy of the information. Colliers excludes unequivocally all inferred or implied terms, conditions and warranties arising out of this document and excludes all liability for loss and damages arising there from. This publication is the copyrighted property of Colliers and /or its licensor(s). © 2026. All rights reserved. This communication is not intended to cause or induce breach of an existing listing agreement. Colliers International OR LLC