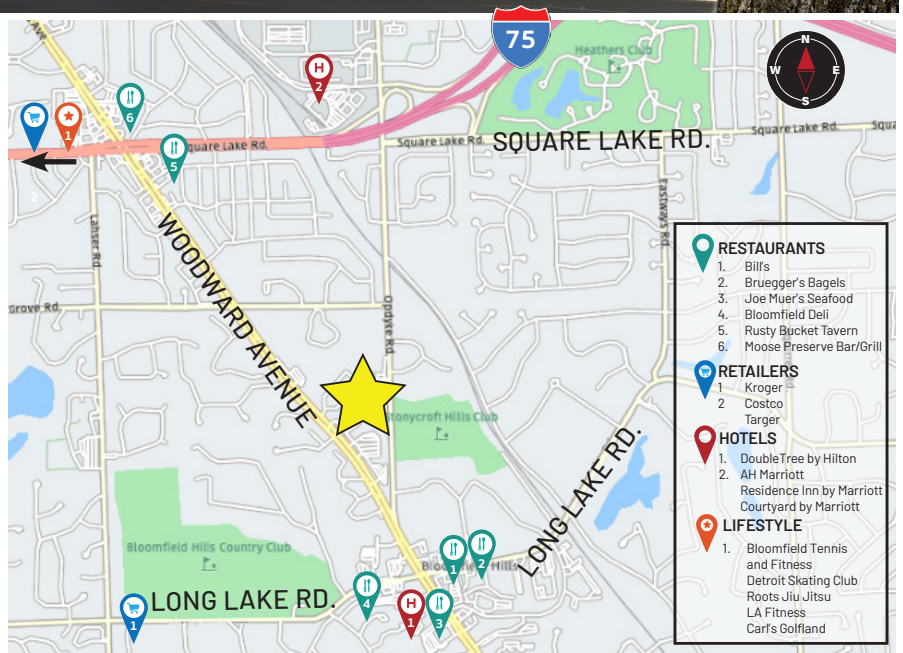
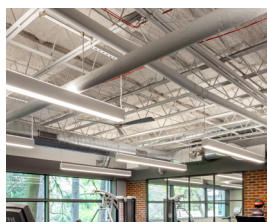
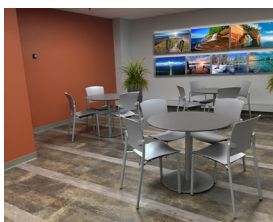


# Stoneridge I

41000 & 41100 Woodward Avenue, Bloomfield Hills, Michigan



## PREMISES

- Three-story, 150,000 SF office building with two connected wings

## AVAILABILITY

- 1st Floor: 5,752 up to 22,018 SF
- 2nd Floor: 4,664 SF up to 12,625 SF
- 3rd Floor: 2,083 SF up to 26,545 SF (split options available)

## RENTAL RATE

- \$19.95 - \$24.95 psf
- 2026 Base Year, plus electricity

## FEATURES AND AMENITIES

- SIGNAGE AVAILABLE
- Fully-equipped fitness center with Peloton bikes
- Micro-market, grab n' go food service.
- Magnificent wooded setting in the heart of Bloomfield Hills
- Inviting three-story rotunda lobbies and recently renovated common areas and restrooms
- Convenient points of entry, including walk-out access on both first and second floors
- Well-lit parking with adjacent 2-level covered parking deck
- Computerized security/entry access
- Convenient I-75 access less than a mile away
- Nearby hotels and fine restaurants

## FOR MORE INFORMATION

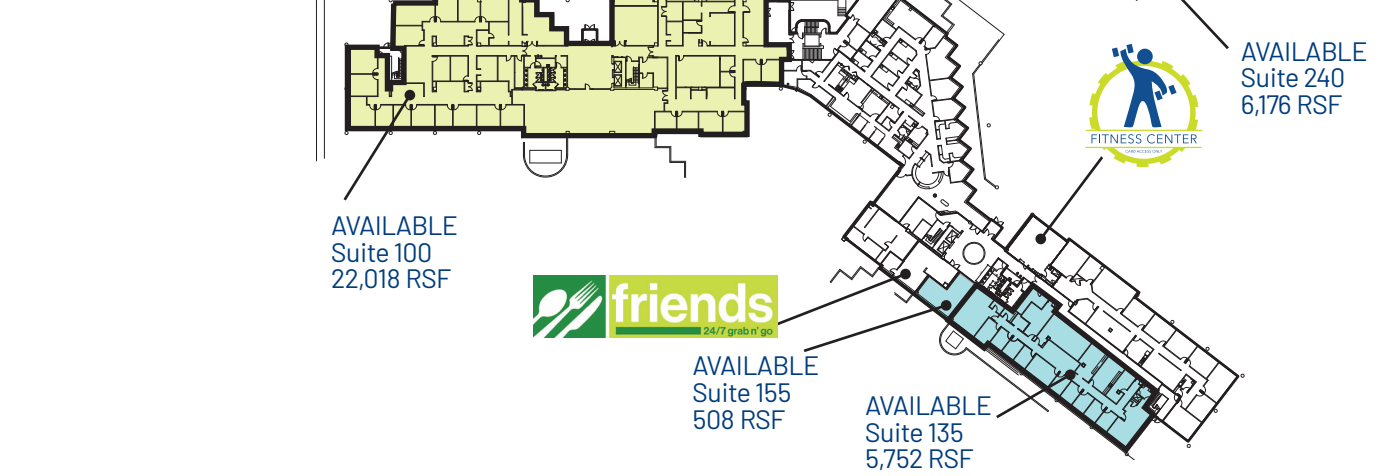
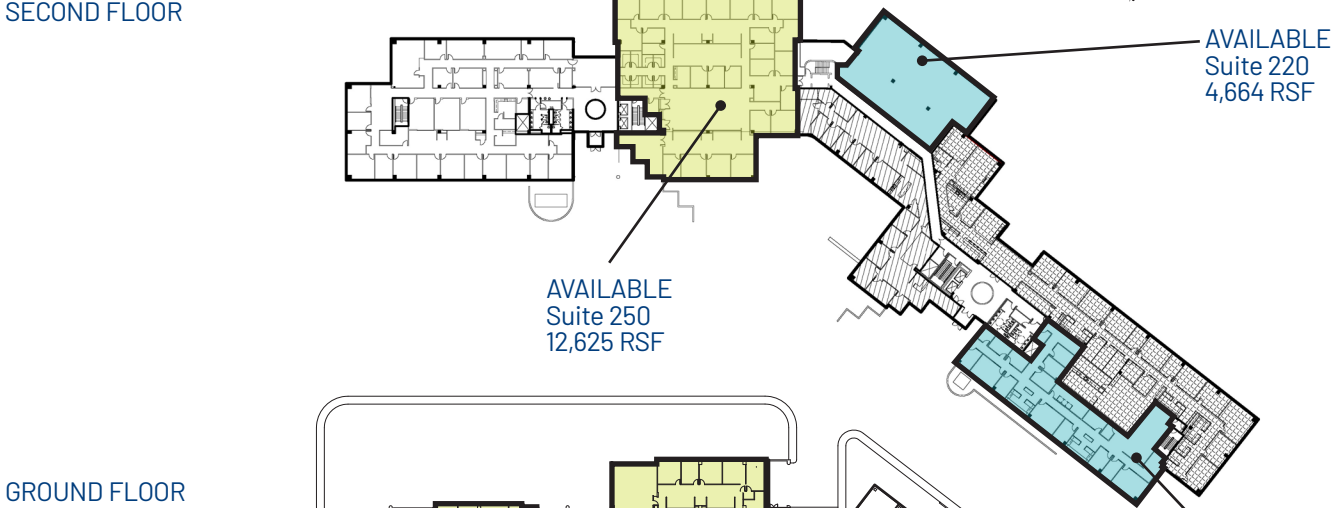
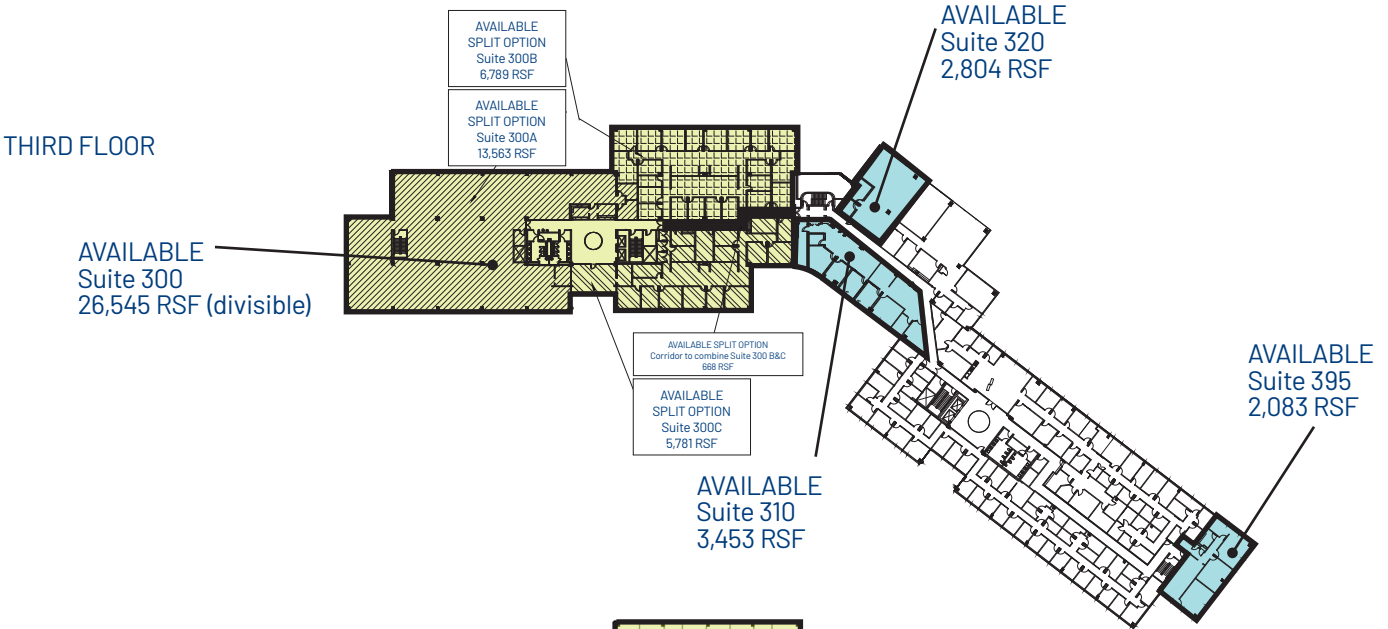
Eric Horwitz | ehorwitz@kojaian.com  
Zach Burk | zburk@kojaian.com  
248.644.7600 | Kojaian.com



# Stoneridge I

41000 & 41100 Woodward Avenue, Bloomfield Hills, Michigan

-  41100 WOODWARD AVENUE -AVAILABILITY
-  41000 WOODWARD AVENUE -AVAILABILITY



**FOR MORE INFORMATION**  
 Eric Horwitz | ehorwitz@kojaian.com  
 Zach Burk | zburk@kojaian.com  
 248.644.7600 | Kojaiian.com

