

3201

WILSHIRE BLVD.
SANTA MONICA, CA

OFFICE/MEDICAL/THERAPY SPACE



293—3,067 SF AVAILABLE

NAI Capital
COMMERCIAL REAL ESTATE SERVICES, WORLDWIDE

Joseph Gabbai
Executive Vice President
310.806.6134
jgabbai@naicapital.com
Cal DRE Lic #01016301

3201

WILSHIRE BLVD.
SANTA MONICA, CA

OFFICE/MEDICAL/THERAPY SPACE

Property Features

- CALL BROKER FOR RENTAL RATES
- 3-story modern office/medical building
- Large courtyard with lush landscaping
- Ample subterranean parking
- Easy access to the 405 freeway
- Within walking distance of many restaurants and other amenities

Asking Rate

Call Broker

Lease Terms

1 to 5 Years

Tenant Improvements

Negotiable

Parking

3/1,000 SF
\$180Mo. (Reserved)
\$150/Mo. (Unreserved)

Availability

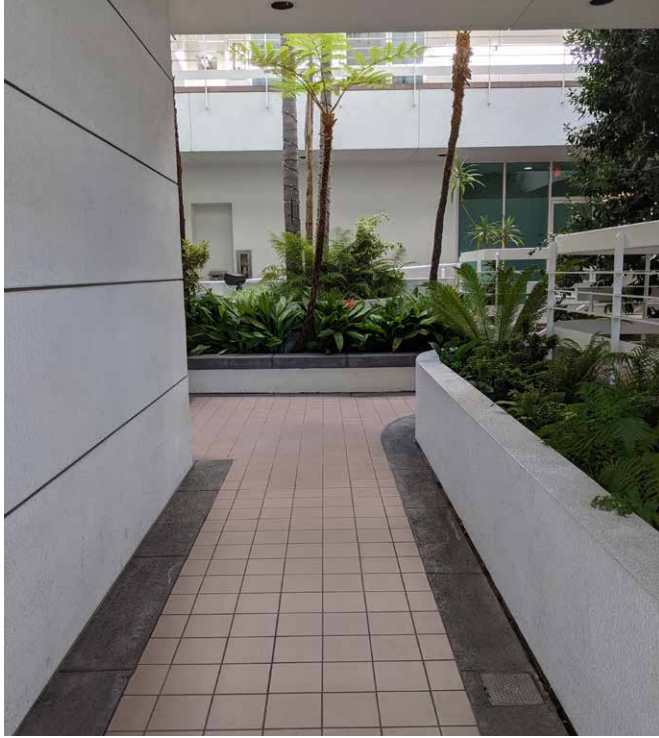
Suite 102 Office	3,067 SF	Negotiable	Four private offices, conference room, large bullpen space, reception/waiting area, eat-in kitchen, exposed ceilings, access to patio
Suite 202 Therapy	1,565 SF	Negotiable	Raw space, to be built-to-suit
Suite 209-3 Therapy	294 SF	Negotiable	Single window therapy room within a larger therapy office with waiting area/kitchen
Suite 209-7 Therapy	293 SF	Negotiable	Single window therapy room within a larger therapy office with waiting area/kitchen
Suite 320-A Therapy	591 SF	Negotiable	Single window therapy room with a private balcony within a larger therapy office with waiting area/kitchen



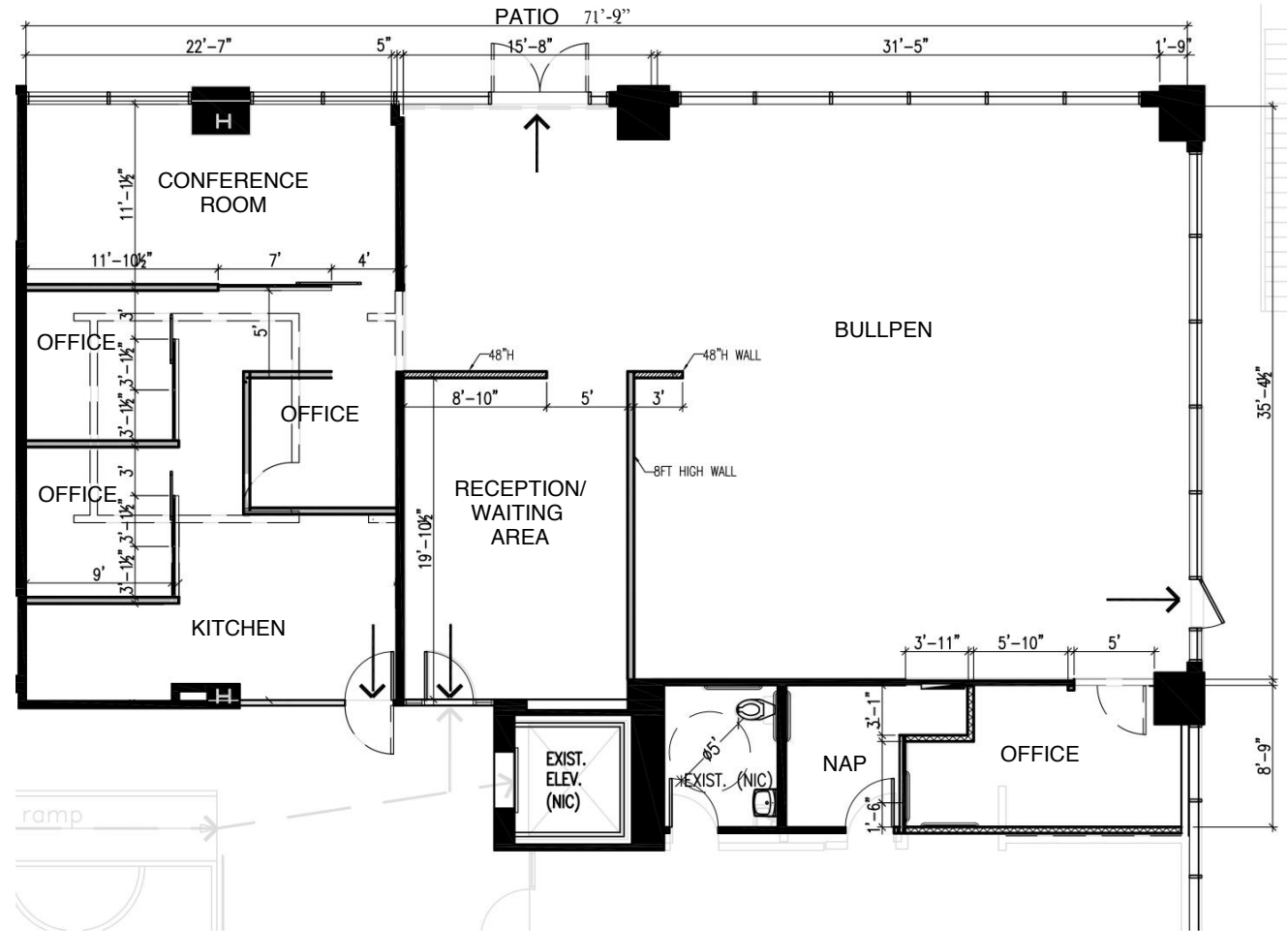
3201

WILSHIRE BLVD.
SANTA MONICA, CA

OFFICE/MEDICAL/THERAPY SPACE



Suite 102
3,067 SF

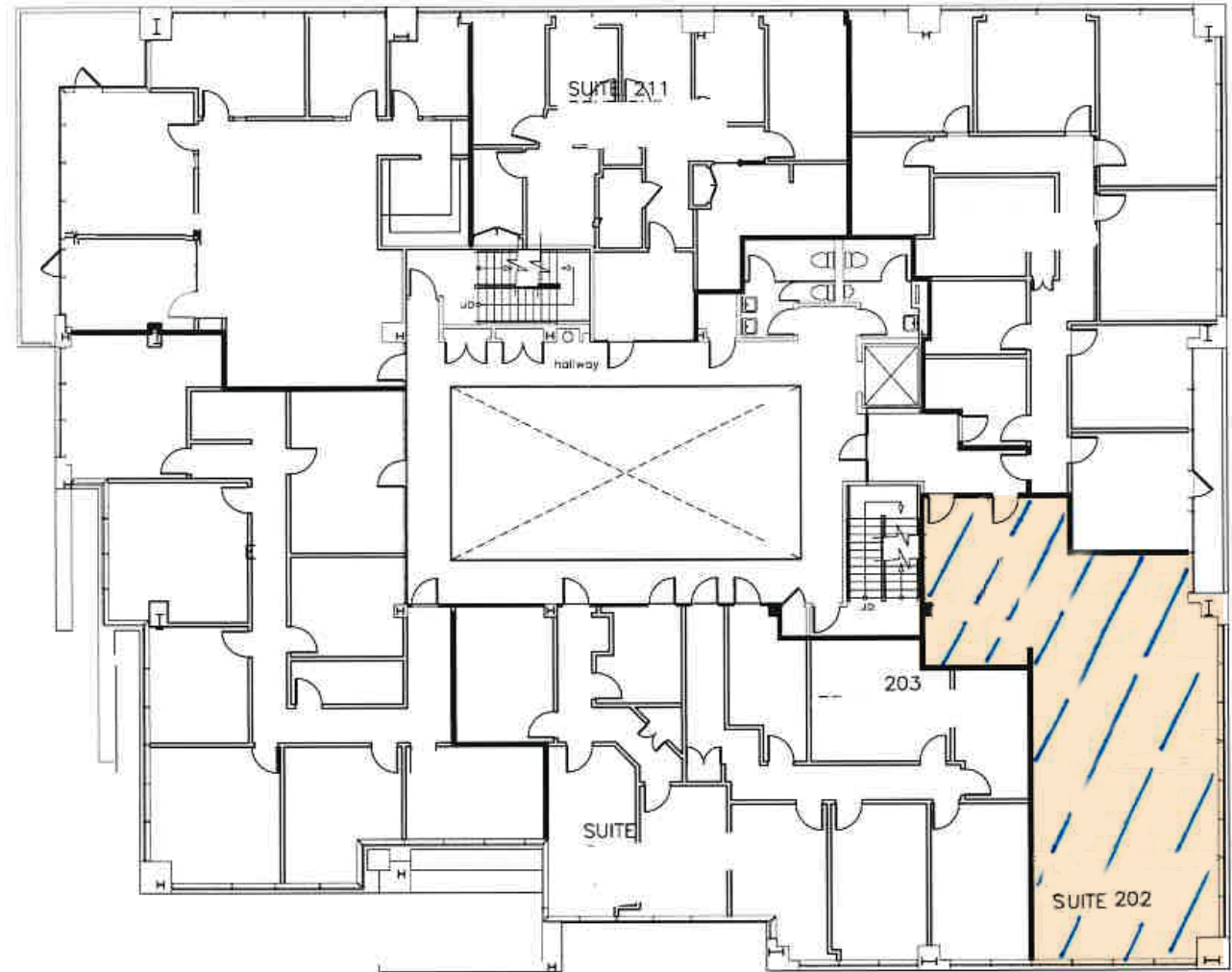


3201

WILSHIRE BLVD.
SANTA MONICA, CA

OFFICE/MEDICAL/THERAPY SPACE

Suite 202
1,565 SF

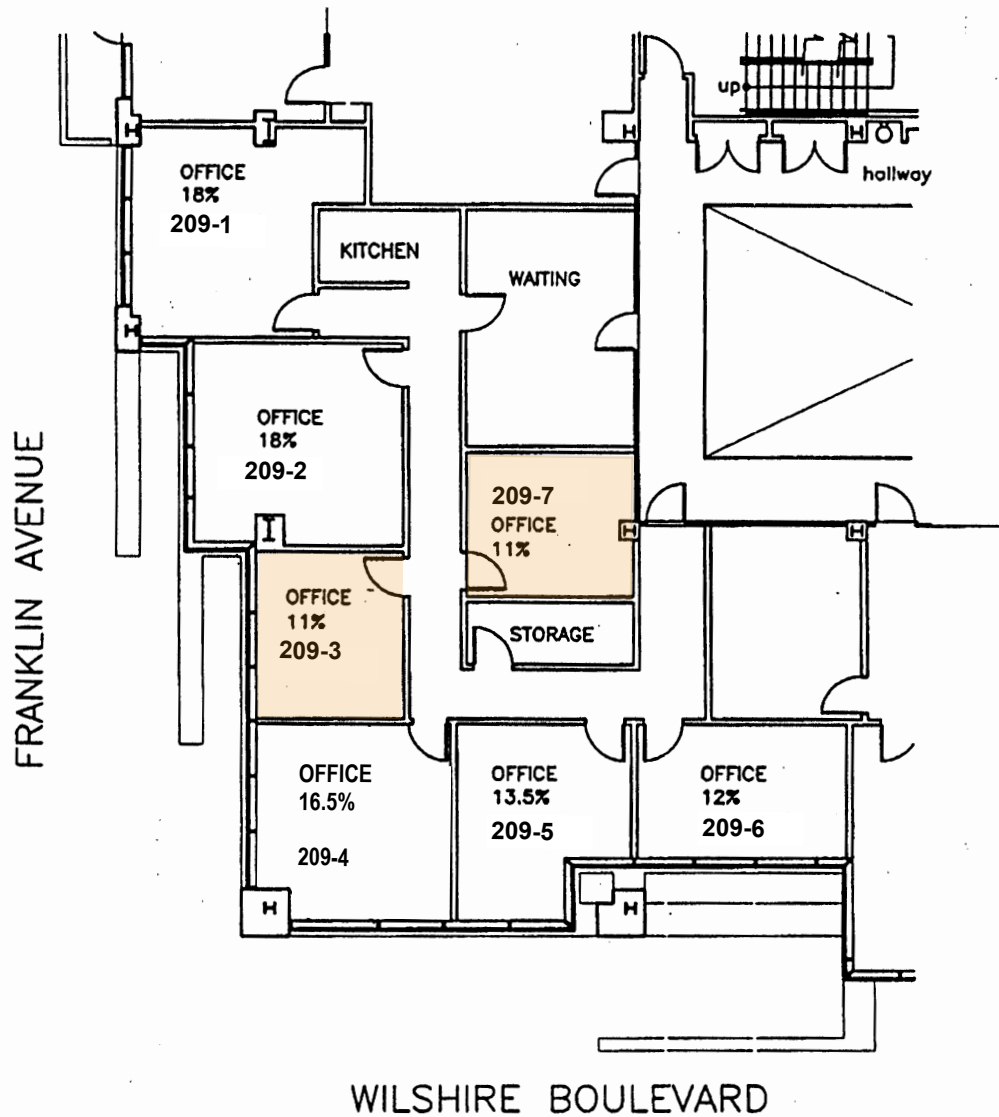


Suite 209-3

294 SF

Suite 209-7

293 SF



3201

WILSHIRE BLVD.
SANTA MONICA, CA

OFFICE/MEDICAL/THERAPY SPACE

Suite 320-A
591 SF

