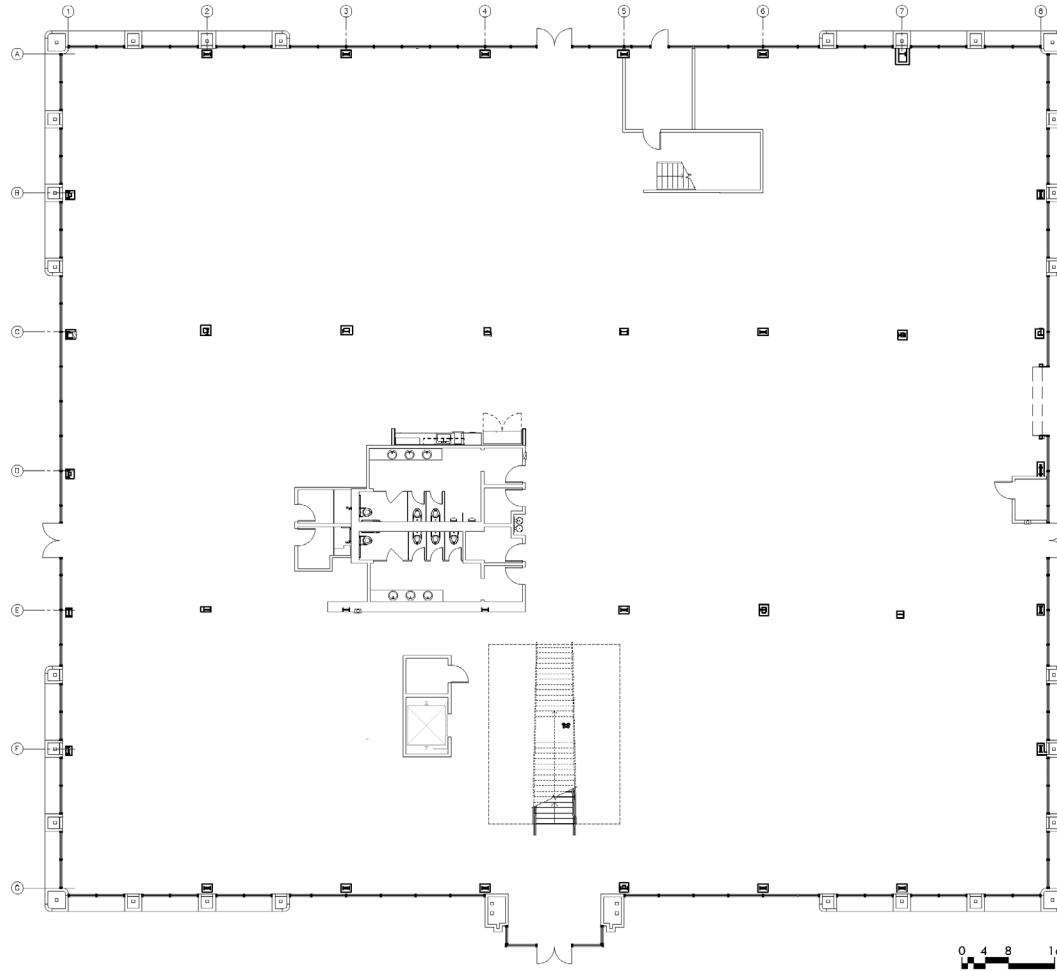
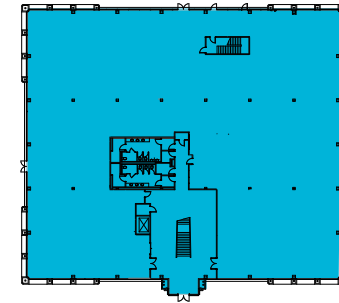


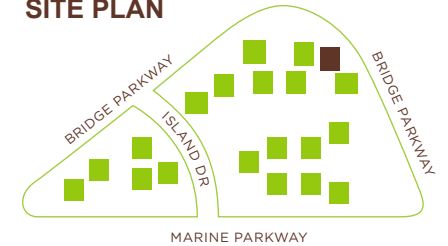
1st Floor - ±26,000 SF
Existing Floor Plan - R&D Opportunity - Available Now



KEY PLAN



SITE PLAN



BEN PAUL
Vice Chairman
+1 650 401 2123
ben.paul@cushwake.com
LIC #01210872

MARC POPE
Vice Chairman
+1 650 401 2131
marc.pope@cushwake.com
LIC #01474483

NICK WALDSMITH
Director
+1 650 320 0244
nick.waldsmith@cushwake.com
LIC #02148008