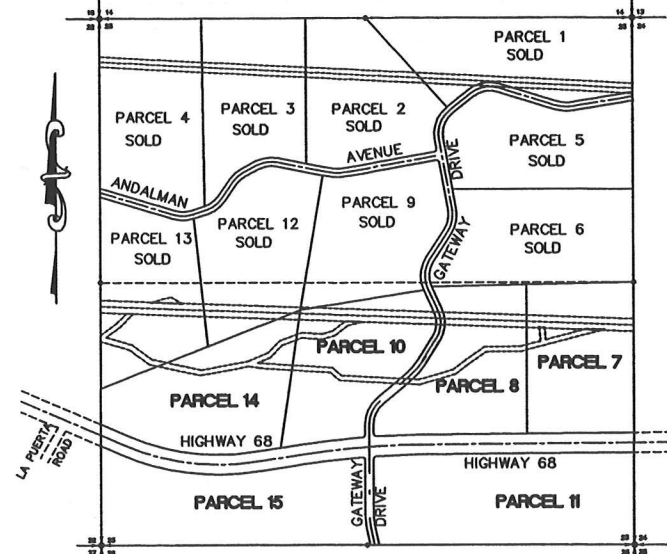


LAND MAP

BEING THE SOUTH 1/2 OF SECTION 23, T. 21 N., R. 21 W.,
G. AND S.R.M., MOHAVE COUNTY, ARIZONA
(APPROXIMATELY 250 ACRES)

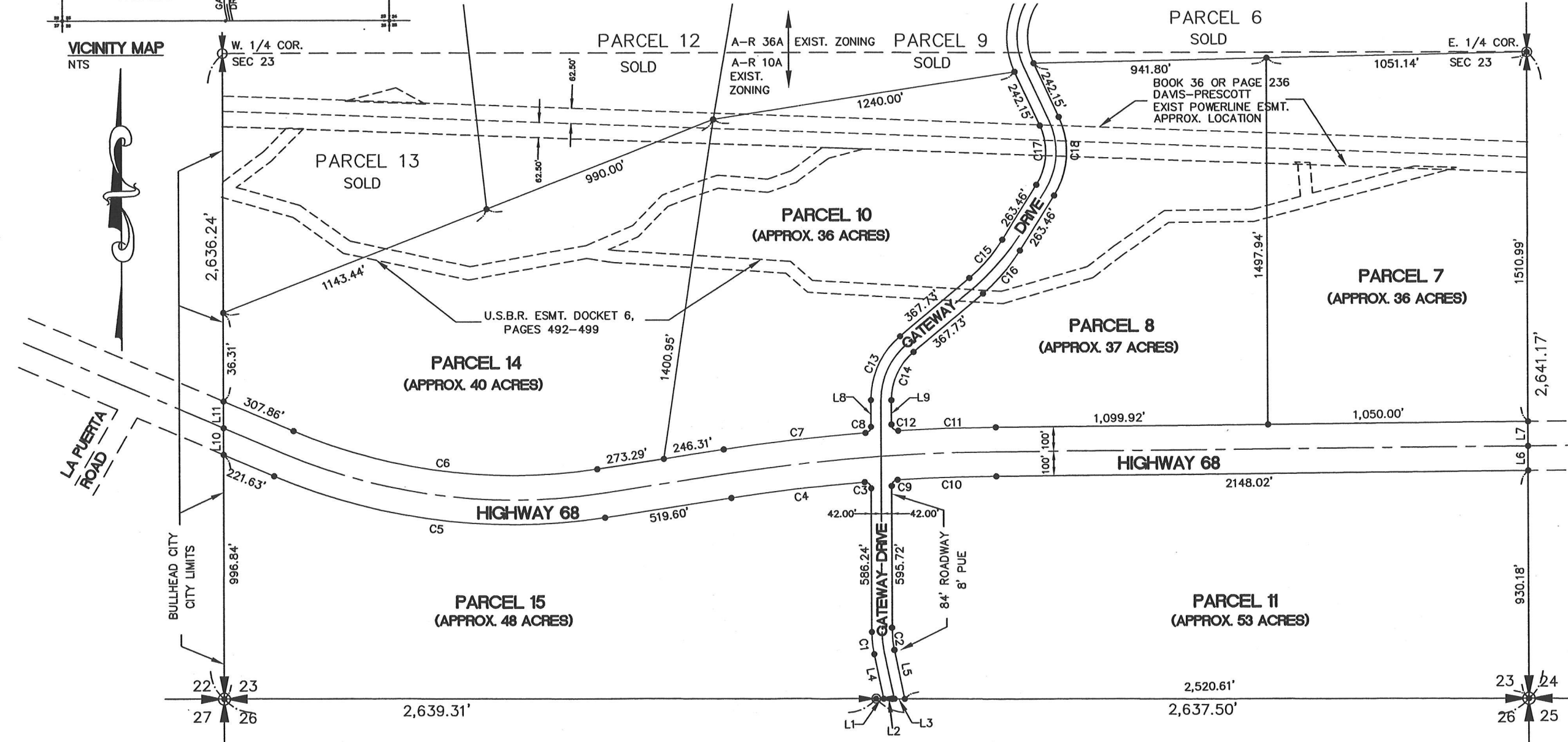
LINE TABLE	
LINE	LENGTH
L1	31.03
L2	42.93
L3	42.93
L4	185.65
L5	203.44
L6	100.00
L7	100.00
L8	108.51
L9	99.33
L10	108.90
L11	108.90

CURVE TABLE		
CURVE	LENGTH	RADIUS
C1	91.56	442.00
C2	74.16	358.00
C3	41.26	25.00
C4	548.50	7550.98
C5	1361.75	2430.60
C6	1249.70	2230.61
C7	582.90	7750.98
C8	37.34	25.00
C9	37.73	25.00
C10	399.59	7550.98
C11	394.74	7750.98
C12	40.76	25.00
C13	296.06	342.00
C14	223.34	258.00
C15	206.63	658.00
C16	233.01	742.00
C17	252.77	258.00
C18	335.07	342.00



NOTES:

- SECTION 23 IS SUBJECT TO EASEMENTS SHOWN PER INSTRUMENT BOOK 69 OF DEEDS PAGE 547 OF UNDEFINED LOCATION.
- PARCEL PLAT FOR SECTION 23, T.21N., R.21W., G.& S.R.M., MOHAVE COUNTY, ARIZONA, RECORDED IN BOOK 3 OF PARCEL PLATS, PAGE 92-G2A, RECORDS OF MOHAVE COUNTY, ARIZONA



UTILITIES SERVING THE VICINITY
 NORTH MOHAVE VALLEY WATER COMPANY
 (928) 763-5655
 UNISOURCE ENERGY SERVICES
 (800) 352-3010
 FRONTIER - A COMPANY OF CITIZENS, COMMUNICATIONS
 (928) 763-1122
 SOUTHWEST GAS CORPORATION
 (928) 763-7766
 BULLHEAD CITY WASTEWATER
 (928) 758-0128
 CABLEVISION
 (928) 758-6641

APPROXIMATE DISTANCES TO:	
LAUGHLIN BRIDGE	-----5.0 MI
CASINOS	-----5.5 MI
LAKE MOHAVE	-----4.0 MI
BULLHEAD PARKWAY	-----5.0 MI
AIRPORT	-----5.5 MI

LEGEND

- SECTION CORNER MONUMENT
- AS NOTED

FOR:
LANSTARR PROPERTIES
 C/O ROBERT J. VOLLEN
 2 KINGSWOOD COURT
 RIVERWOODS, ILLINOIS 60015
 PH: (847)945-0548
 FAX: (847)945-0549

A-N WEST INC.
 Consulting Engineers

3860 FRONTAGE ROAD, SUITE 20
 BULLHEAD CITY, ARIZONA 86442
 (928)758-3333

N:\7286\LANDSTAR.DWG